




**▲** See Product Manual for complete installation and programming instructions.

## 1.0 Out-of-Box

### 1.1 Verify that you have received all of the parts listed

	X 1	K-1705-BN-IP or K-1705-BN-IPEWP VoIP Entry Phone with Keypad
	X 1	Torx T-10 Security Bit
	X 16	Gel-Filled Butt Connectors

	X 1	Faceplate Gasket
	X 4	6-32 x 3/4" Flat Head Torx Drive Screws, Bronze
	X 1	Rough In Box
	X 1	Wire Nut

### 1.2 Download the product manual

Scan the QR code to  
open and download  
the product manual

- OR -



1. Go to [www.vikingelectronics.com](http://www.vikingelectronics.com) and enter **K-1705-BN-IP** in the search box
2. Click **K-1705-BN-IP** in the search results
3. Click **Product Manual** to open and download the PDF

### 1.3 Download and install the programming software

1. Go to [www.vikingelectronics.com](http://www.vikingelectronics.com) and enter **K-1705-BN-IP** in the search box
2. Click **K-1705-BN-IP** in the search results
3. Scroll down the page to Downloads, click **IP Programming Software**
4. Install the programming software by saving or opening the file and then clicking on **setup Viking IP Programming.exe**
5. Follow the prompts on your screen to complete software installation

## 2.0 Power Source

Select **PoE Switch** or **PoE Injector** that meets the following requirements:

1. IEEE 802.3af / 802.3at / 802.3bt compliant
2. Capable of providing at least 4 Watts (class 1)

**Note:** CAT5e (or higher) cable recommended

# 3.0 Network Port Settings

- Make sure the port is not in trunk mode
- Make sure port is capable of 100mbps full duplex
- Disable Spanning Tree Protocol (STP) or enable Portfast

# 4.0 Features Overview

**Model PRX-1**  
Proximity Card  
Reader DOD# 221

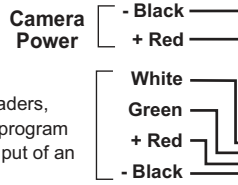


**Model PRX-3** Medium  
Range Proximity Card  
Reader DOD# 228



**26 Bit Wiegand Input / Output**

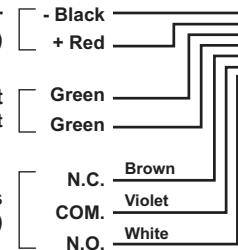
For connecting optional Proximity Card Readers, see Viking models above (not included) or program as a output to connect to the card reader input of an Access Control System



**12 VDC Power Output for VE-LIGHT, etc. (12VDC @ 50mA max)**

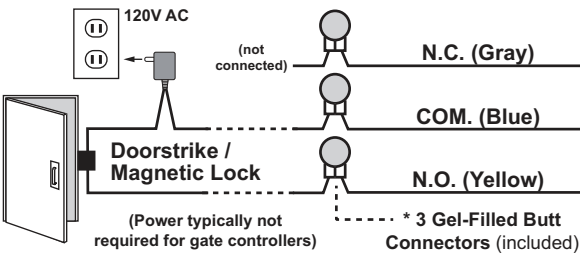
**Request for Exit (REX) Input**

**Relay 2 Output Contacts (2A@30VDC/ 250VAC max)**

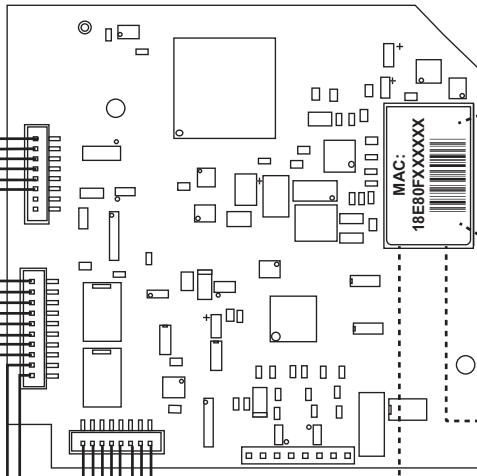


**Connect to Optional Doorstrike, Mag Lock, Gate Controller, etc.**

**Relay 1 Output Contacts (2A@30VDC/ 250VAC max)**



**Rear (PCB) View of the K-1705-IP Entry Phone**

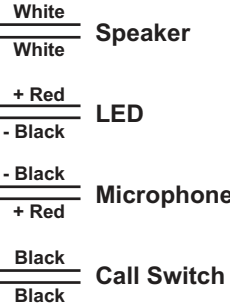


**PoE LAN Port 10/100, PoE Class 2 (<6.5 Watts):** Connect to your LAN via RJ45 plug and CAT5 or greater twisted pair wire.

**MAC Address Label:** The MAC address is a unique 12 digit number used by routers to send network traffic to the correct IP address.

**Yellow Network Status LED:** Lights steady to indicate power and data link. Blinks to indicate network activity.

**Green Unit Status LED**



**Note:** The gel-filled (water-tight) butt connectors are designed for insulation displacement on 19-26 gauge wire with a maximum insulation of 0.082 inches. Cut off stripped wire ends before terminating.

See the Product Manual for complete installation and programming instructions.  
Questions? Call Viking Product Support: 715-386-8666

Due to the dynamic nature of the product design, the information contained in this document is subject to change without notice. Viking Electronics, and its affiliates and/or subsidiaries assume no responsibility for errors and omissions contained in this information. Revisions of this document or new editions of it may be issued to incorporate such changes.