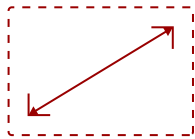
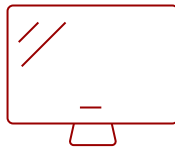


VG2457V - 24" 1080P VIDEO CONFERENCING MONITOR WITH WINDOWS HELLO COMPATIBLE IR WEBCAM, 90W USB C, DOCKING

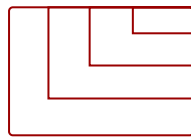
Key Features



24
DISPLAY



IPS
PANEL



1920 X 1080
RESOLUTION



**ADVANCED ERGONOMICS
WITH 40° TILT**
More Comfort while Working

Product Description

ViewSonic VG2457V video conferencing monitor is a docking monitor with premium features such as a pop-up webcam that will help maintain productive meetings whether in the office or working from home, with secure features like a Windows Hello compatible IR camera and Zoom certification for peace of mind on security and reliable conferencing. Premium webcam features to improve visual and audio aspects of video calls such as built in LED lighting, and a front firing speaker bar. The IR camera allows for secure and easy sign-on with Windows Hello. Full docking functionality (daisy chain, USB-C single cable connectivity with 90W power delivery, reliable ethernet connectivity) simplifies accessories needed to deploy for IT infrastructure.

Specifications

UPC	766907024340
Screen Size	24
Viewable Area (in.)	23.8
Panel Type	IPS
Display Resolution	1920 x 1080
Display Resolution	Full HD (1920x1080)
Static Contrast Ratio	1,300:1
Dynamic Contrast Ratio	80M:1
Light Source	LED
Brightness	250 cd/m2
Color Space Support	8 bit (6 bit + FRC)
Aspect Ratio	16:9
Response Time (Typical GTG)	5ms
Viewing Angles	178° horizontal, 178° vertical
Backlight Life (Hours)	30,000
Panel Surface	Anti-Glare type, Hard-coating (3H), Haze 25%
Refresh Rate	100Hz
PC Resolution (max)	1920 X 1080
Mac® Resolution (max)	1920 X 1080
USB Type A	2
USB Type C	2
3.5mm Audio Out	1
Ethernet LAN (RJ45)	1
HDMI 1.4 In	1
DisplayPort	1
DisplayPort Out	1
Internal Speakers	5W (x2)
Eco Mode (Conserve)	119
Eco Mode (optimized)	121.8
Consumption (typical)	124.4
Consumption (max)	167.8
Voltage	100-240 VAC, 50-60Hz
Stand-by	0.5
Power Supply	Internal
Cable Organization	No
Kensington Lock Slot	1

Webcam	Yes
Physical Controls	Key 1 (eye), Key 2, Key 3, Key 4, Key 5, Key 6 (power)
On Screen Display	Input Select, Conference Mode, ViewMode, Color Adjust, Manual Image Adjust, Setup Menu
Temperature	32-104° F (0 - 40° C)
Humidity (non-condensing)	20-90%
VESA Compatible	100 x 100 mm
Frequency Horizontal	15 ~ 110 KHz
Frequency Vertical	Fv = 50 ~ 100 Hz
Height Adjust	110 mm / 4.3 in
Swivel	60°
Pivot (Right/Left)	90° / 90°
Tilt (Forward/Back)	5° / 40°
Net (lbs)	15.1
Net Without Stand (lbs)	10
Gross (lbs)	21.3
Net (kg)	6.9
Net Without Stand (kg)	4.6
Gross (kg)	9.7
Packaging (in.)	23.9 " (W) x 16.2 " (H) x 8.3 " (D)
Physical (in.)	21.22 " (W) x 15.82~20.15 " (H) x 7.96 " (D)
Physical Without Stand (in.)	21.22 " (W) x 13.74 " (H) x 2.2 " (D)
Packaging (mm)	606 mm (W) x 411 mm (H) x 210 mm (D)
Physical (mm)	539.04 mm (W) x 401.83~511.83 mm (H) x 202.18 mm (D)
Physical Without Stand (mm)	539.04 mm (W) x 349 mm (H) x 55.8 mm (D)
Regulations	cTUVus, FCC-B ICES003, Energy Star, EPEAT, CEC, NOM, Mexico Energy
Package Contents	LCD Display, Power Cable, HDMI to HDMI Cable, USB Type-C Cable (Male-Male; with Type-A adapter), Quick Start Guide
Recycle/Disposal	Please dispose of in accordance with local, state or federal laws.
Warranty	Three-year limited warranty on parts, labor and backlight

UPC: 766907024340



**EXPERIENCE
CRYSTAL CLEAR MEETINGS**



WINDOWS HELLO CERTIFIED
Facial Recognition for Safe Single User Sign-On



LESS CLUTTER. MORE EFFICIENCY
One Cable Solution and Docking Station

Contact Sales

ViewSonic.com

888.881.8781

email: salesinfo@viewsonic.com