

VA2759-SMH - 27" 1080P IPS MONITOR WITH FREESYNC, HDMI AND VGA INPUTS

Key Features

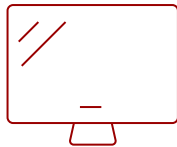
- 27 Inch Full HD (1920x1080p) IPS monitor with 100Hz refresh rate
- Optimized view settings offer “Game,” “Movie,” “Web,” “Text,” and “Mono” presets
- The VA2759-SMH supports laptops, PCs, Macs and more with HDMI, and VGA inputs



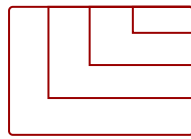
What's in the box.



27
DISPLAY



IPS
PANEL



1920x1080
RESOLUTION



VA2759-SMH Monitor

*Power Cable varies by region



Power Cable*



HDMI Cable



QuickStart Guide

Product Description

With flexible connectivity, wide-angle viewing, and amazing screen performance, the ViewSonic® VA2759-smh delivers solid multimedia features and a sleek design at a great value. Featuring SuperClear IPS panel technology, the 27" VA2759-smh delivers stunning brightness and contrast at nearly any viewing angle. A minimalistic design, edge-to-edge screen, and frameless bezel make this an ideal monitor for nearly seamless multi-screen setups. Whether for working at the office, or enjoying entertainment at home, the VA2759-smh also features an HDMI port for flexible connectivity to PCs, laptops, gaming consoles, and other multimedia devices. In addition, a 3-year limited warranty, along with one of the industry's best pixel performance policies, makes the VA2759-smh a great overall value choice.

Specifications

UPC	766907837513
Screen Size	27
Viewable Area (in.)	27
Panel Type	IPS
Display Resolution	1920 x 1080
Static Contrast Ratio	1,300:1
Dynamic Contrast Ratio	50,000,000:1
Light Source	LED
Brightness	250 cd/m2
Colors	16.7M
Response Time (Typical GTG)	4ms
Viewing Angles	178° horizontal, 178° vertical
Backlight Life (Hours)	30,000
Panel Surface	Anti-Glare type, Hard-coating (3H), Haze 25%
Refresh Rate	100Hz
PC Resolution (max)	1920x1080
Mac® Resolution (max)	1920x1080
3.5mm Audio In	1
3.5mm Audio Out	1
HDMI In	1
VGA	1
Power in	3-pin plug (CEE22)
Internal Speakers	2-watt (x2)
Eco Mode (Conserve)	13W
Eco Mode (optimized)	16W
Consumption (typical)	19W
Consumption (max)	26W
Voltage	AC 100-240V (universal), 50-60Hz
Stand-by	0.5W
Power Supply	Internal
Cable Organization	No
Kensington Lock Slot	1
Physical Controls	Key 1 (favorite), Key 2, Key 3, Key 4, Key 5 (power)
On Screen Display	Input Select, Audio Adjust, ViewMode, Color Adjust, Manual Image Adjust, Setup Menu
Temperature	32-104° F (0 - 40° C)
Humidity (non-condensing)	20-90%

VESA Compatible	100 x 100 mm
Frequency Horizontal	24 ~ 86 KHz
Frequency Vertical	48 ~ 75 Hz
Analog Sync	Separate Sync, Composite Sync, Sync on Green, TMDS
Tilt (Forward/Back)	2° / 20°
Net (lbs)	9.7
Net Without Stand (lbs)	8.2
Gross (lbs)	13.2
Net (kg)	4.4
Net Without Stand (kg)	3.7
Gross (kg)	6.0
Packaging (in.)	27.4 x 18.4 x 5.7
Physical (in.)	24.2 x 17.5 x 9.3
Physical Without Stand (in.)	24.2 x 14.1 x 1.9
Packaging (mm)	697.0 x 467.0 x 144.0
Physical (mm)	615.0 x 444.0 x 235.0
Physical Without Stand (mm)	615.0 x 358.0 x 48.0
Regulations	cTUVus, FCC-B, ICES003, Energy Star 8.0, EPEAT Silver, CEC, NOM, Mexico Energy, CB, RoHS
Package Contents	VA2759-SMH x1, 3-pin Plug (IEC C13 / CEE22) x1, HDMI Cable (v1.4; Male-Male) x1, Quick Start Guide x1
Recycle/Disposal	Please dispose of in accordance with local, state or federal laws.
Warranty	Three-year limited warranty on parts, labor and backlight

UPC: 766907837513



27" Full HD 1080p SuperClear® IPS panel with slim bezel design.



Flexible, future-proof connectivity options.



Contact Sales

ViewSonic.com

888.881.8781

email:

salesinfo@viewsonic.com