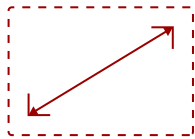
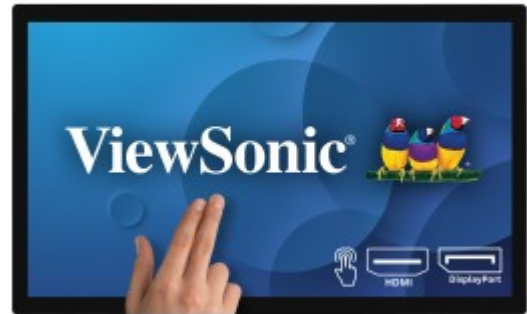


## TD3207 - 32" 1080P OPEN FRAME 10-POINT TOUCH MONITOR WITH 24/7 OPERATION AND HDMI, DISPLAYPORT AND RS232

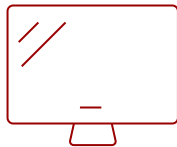
### Key Features

---

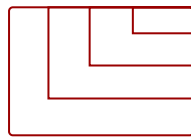
32" 1080p Open Frame 10-Point Touch Monitor with 24/7 Operation and HDMI, DisplayPort and RS232



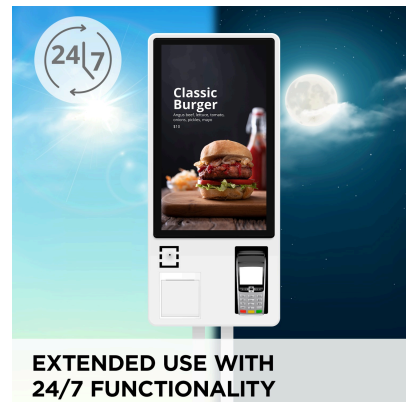
32  
DISPLAY



MVA  
PANEL



1920 x 1080  
RESOLUTION



### Product Description

---

The TD3207 is the ideal solution for commercial and industrial spaces. Designed for heavy, continuous usage, TD3207 delivers a 24/7 long-life. With an open frame design, and equipped with VESA mounting design suitable for portrait and landscape mode, this monitor is ready to be incorporated into industrial, retail, and commercial applications. Resistant to moisture and scratches, the 3mm thick glass screen with 7H hardness features an intuitive 10-point PCAP touch technology for maximum interactivity. Featuring SuperClear® VA panel technology, the device delivers lifelike imagery, vivid color, and constant brightness of up to 450 nits. Connection options include HDMI and DisplayPort inputs for effortless sharing capabilities and an RS232 allows you to control the device remotely.

# Specifications

---

	More Information
<b>UPC</b>	766907010466
<b>Screen Size</b>	32
<b>Viewable Area (in.)</b>	31.5
<b>Panel Type</b>	MVA
<b>Display Resolution</b>	1920 x 1080
<b>Display Resolution</b>	Full HD (1920x1080)
<b>Static Contrast Ratio</b>	3,000:1
<b>Dynamic Contrast Ratio</b>	50,000,000:1
<b>Light Source</b>	LED
<b>Brightness</b>	450 cd/m2
<b>Colors</b>	16.7M
<b>Color Space Support</b>	8 bit true
<b>Aspect Ratio</b>	16:9
<b>Response Time (Typical GTG)</b>	5ms
<b>Viewing Angles</b>	178° horizontal, 178° vertical
<b>Backlight Life (Hours)</b>	50,000
<b>Panel Surface</b>	7H Tempered Glass, Haze 2%
<b>Refresh Rate</b>	60Hz
<b>PC Resolution (max)</b>	1920 x 1080
<b>Mac® Resolution (max)</b>	1920 x 1080
<b>USB Type B</b>	1
<b>3.5mm Audio Out</b>	1
<b>HDMI 1.4 In</b>	1
<b>DisplayPort</b>	1
<b>RS232 In</b>	1
<b>Touch Technology</b>	Projective Capacitive
<b>Touch Points</b>	10-Point Touch
<b>Internal Speakers</b>	2-watt (x2)
<b>Eco Mode (Conserve)</b>	30w
<b>Eco Mode (optimized)</b>	38w
<b>Consumption (typical)</b>	46w
<b>Consumption (max)</b>	50w
<b>Voltage</b>	AC 100-240V (universal), 50-60Hz

<b>Stand-by</b>	0.5w
<b>Power Supply</b>	External
<b>Cable Organization</b>	No
<b>Physical Controls</b>	1, 2, Up, Down, Left, Right, Power
<b>On Screen Display</b>	Contrast/Brightness, Input Select, Audio Adjust, Color Adjust, Information, Manual Image Adjust, Setup Menu, Memory Recall
<b>Temperature</b>	32-104° F (0 - 40° C)
<b>Humidity (non-condensing)</b>	20-90%
<b>VESA Compatible</b>	400 x 200; 200 x 100
<b>Frequency Horizontal</b>	15 ~ 73 KHz
<b>Frequency Vertical</b>	47 ~ 75 Hz
<b>Net (lbs)</b>	28.2
<b>Gross (lbs)</b>	34.2
<b>Net (kg)</b>	12.8
<b>Gross (kg)</b>	15.5
<b>Packaging (in.)</b>	34 " (W) x 22.7 " (H) x 6.4 " (D)
<b>Physical (in.)</b>	29.4 " (W) x 17.8 " (H) x 2.5 " (D)
<b>Packaging (mm)</b>	863 mm (W) x 577 mm (H) x 163 mm (D)
<b>Physical (mm)</b>	747 mm (W) x 451 mm (H) x 64 mm (D)
<b>Package Contents</b>	LCD Display, Power Cable, HDMI to HDMI Cable, USB A to USB B cable, Quick Start Guide
<b>Recycle/Disposal</b>	Please dispose of in accordance with local, state or federal laws.
<b>Warranty</b>	Three-year limited warranty on parts, labor and backlight

UPC: 766907010466



**ADVANCED DURABILITY  
WITH IP54 RATING**

**Contact Sales**

[ViewSonic.com](http://ViewSonic.com)

888.881.8781

email:

[salesinfo@viewsonic.com](mailto:salesinfo@viewsonic.com)