



CCT Selectable Switch

Wattage Selectable Switch

Description

Venture Lighting's color temperature selectable and wattage selectable luminaire is capable of changing to 3 different CCT settings and 5 different wattage settings. These field-adjustable fixtures are preset to the highest wattage (can be adjusted via an internal rotary switch) and 5000K CCT (can be adjusted via an internal slide switch). The flexible selection capability allows for a cost-effective method to reduce stocking inventory to 1 SKU instead of 15. This LED luminaire is designed for great performance, long life, and low maintenance.

Construction

The rugged die-cast aluminum housing is powder-coated for superior corrosion resistance and is provided with a premium stripe glass lens. The high-performance LED sources are mounted to ensure proper thermal management of the system. The design allows for a cooler running LED chip which leads to longer lifetime, better efficacy, and color consistency. The fixture has a gasket seal to eliminate the threat of contaminants damaging the components. The standard fixture color is bronze, custom colors are available upon request.

Electrical

The power supply has a range of 120-277V, 50/60Hz. An integrated button photocell is included (it can be disabled if desired).

Mounting

The fixture can be wall mounted to a recessed junction box or surface mounted conduit (knockouts are available for 3/4" NPT and 1/2" NPT). This LED traditional style wallpack has the same mounting footprint size as HID 250W wallpacks.

Warranty

For warranty information refer to: www.venturelighting.com/resources/warranties

Notes

*Lumen maintenance data is based on LED testing per IESNA LM-80 and projected per IESNA TM-21.

**Dimming available when wattage selectability is NOT used.

DLC Model # WH5MUNV-80BSGD-BRW50

Product Performance

Wattage	3000K CCT Lumen Output	4000K CCT Lumen Output	5000K CCT Lumen Output
80W	12032	12770	12245
65W	9596	10185	9766
50W	7382	7834	7512
35W	5167	5484	5259
20W	2953	3134	3005
Color Rendering Index (CRI)	≥ 80		
Lumen Maintenance @50,000 Hrs*	90%		
Calculated L70 @25°C Ambient (Hrs)*	174,000		
Replaces HID Wattage	Up to 250W		
Operating Temperature Range	-40°F to +104°F (-40°C to +40°C)		

Physical Characteristics

Fixture Color	Bronze
Length	14.37"
Width	9.33"
Height	7.36"
Weight	7.7 lbs

Electrical Characteristics

Input	120-277V, 50/60 Hz, 0.85A Max
Power Factor	≥ 90%
THD	≤ 15%
Dimming**	1-10V DC continuous to 10%

Regulatory Qualifications

UL Listed
DLC® Premium Qualified
IP65 Rated – Suitable for wet locations

Accessories

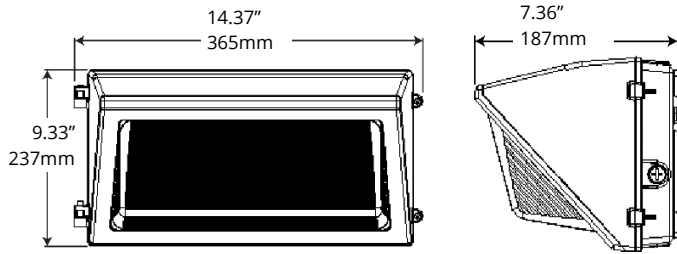
SP12714 – 120-277V Surge Protector

Revision: 04, 13-Dec 2023

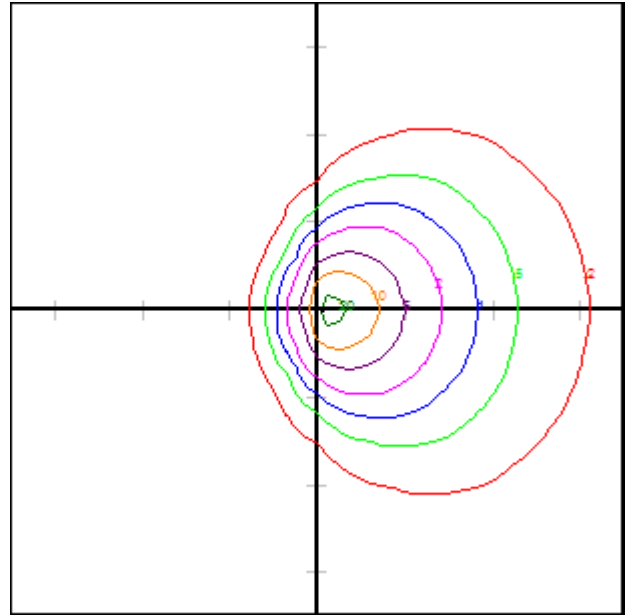


Venture 80W LED Traditional Style Wallpack

Dimensions



Photometrics (Scale 20:1, 12FT MH)



(800) 451-2606

6675 Parkland Blvd., Suite 100

Solon, Ohio 44139 USA

Email: Venture_Lighting@VentureLighting.com

VentureLighting.com

