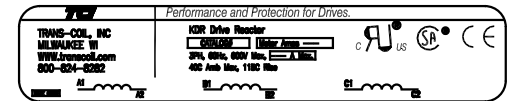
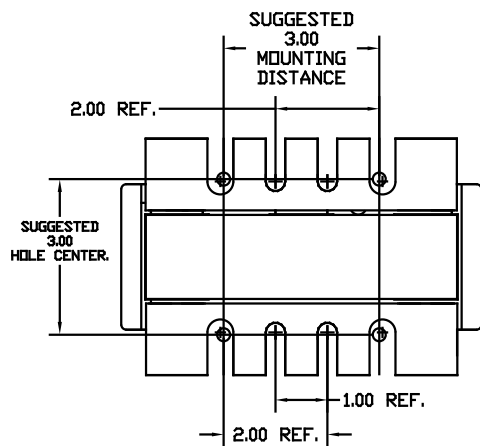
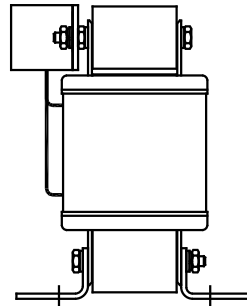
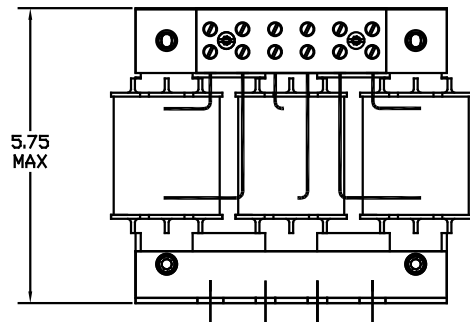


NOTE: A1, A2, B1, B2, C1, C2, MARKINGS ON TERMINAL BLOCK. FOR REFERENCE ONLY.

CATALOG NO	VOLTS(V.)	...MH-±10%	...AMPS(A)	APPROX WT-LBS	TORQUE(LB-IN)
KLR18ETB	28.75	2.44	18	17	20
KLR21CTB	24	1.750	21	17	20
KLR21ETB	28.75	2.10	21	17	20
KLR25CTB	24	1.47	25	17	20
KLR27CTB	24	1.36	27	17	20
KLR35ATB	14.4	.630	35	16	20
KLR35DTB	17.25	.755	35	16	20
KLR45ATB	14.4	.490	45	17	20



Block Wire Range: #18 to #4 AWG Solid or Stranded, Copper
Tightening Torque: 20 LB-IN



				TOLERANCES EXCEPT AS NOTED
				DECIMAL
				.XX ± .03
				.XXX ± .01
M	2256, CORRECT FRAME	9/29/03	DSW	FRACTIONAL ± 1/32
L	2235, MOUNTING CHG	06/06/03	DSW	ANGULAR ± 1/2°
NO	REVISION	DATE	BY	