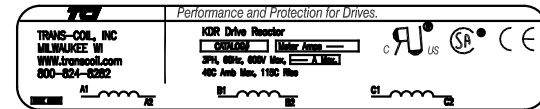
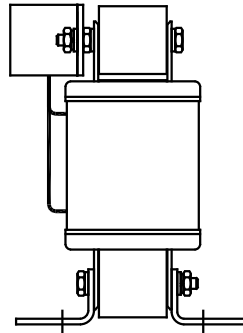
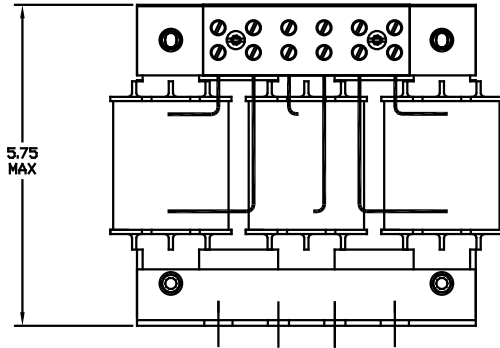
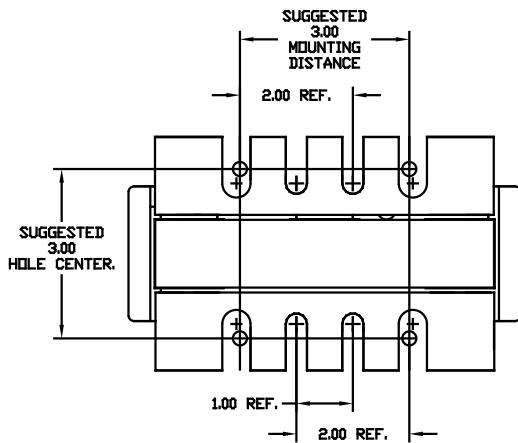


NOTE: A1, A2, B1, B2, C1, C2, MARKINGS ON TERMINAL BLOCK. FOR REFERENCE ONLY.

CATALOG NO	VOLTS(V.)	__MH±10%	__AMPS(A)	APPROX WT-LBS	TORQUE(LB-IN)
KLR12ETB	28.75	3.67	12	8	20
KLR16CTB	24.00	2.30	16	13	20
KLR16ETB	28.75	2.75	16	13	20
KLR18ATB	14.40	1.23	18	12	20
KLR18CTB	24.00	2.04	18	12	20
KLR18DTB	17.25	1.47	18	12	20
KLR21ATB	14.40	1.050	21	13	20
KLR21DTB	17.25	1.26	21	13	20
KLR25ATB	14.40	.882	25	13	20
KLR25DTB	17.25	1.06	25	13	20
KLR27ATB	14.40	.817	27	13	20
KLR27DTB	17.25	.978	27	13	20
KLR55BTB	7.20	.200	55	12	20
KLR55FTB	8.62	.240	55	12	20



Block Wire Range: #18 to #4 AWG Solid or Stranded, Copper
Tightening Torque: 20 LB-IN



				TOLERANCES EXCEPT AS NOTED
				DECIMAL
				.XX ± .03
				.XXX ± .01
				FRACTIONAL
				± 1/32
				ANGULAR
				± 1/2°
M	2235, MOUNTING CHG	06/06/03	DSW	
NO	REVISION	DATE	BY	