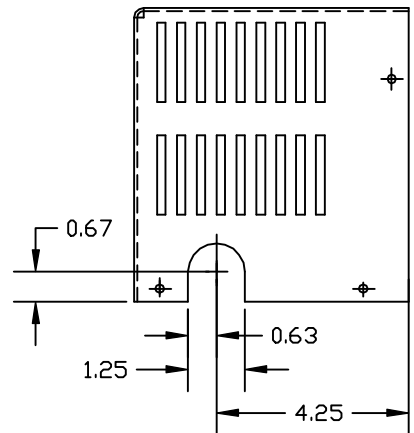
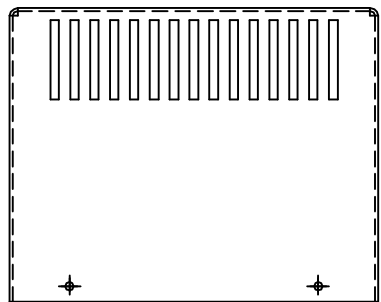
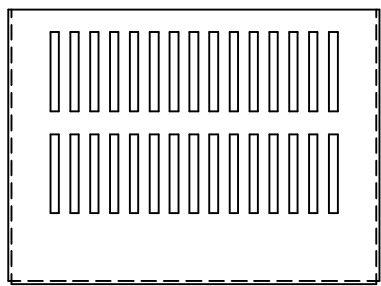
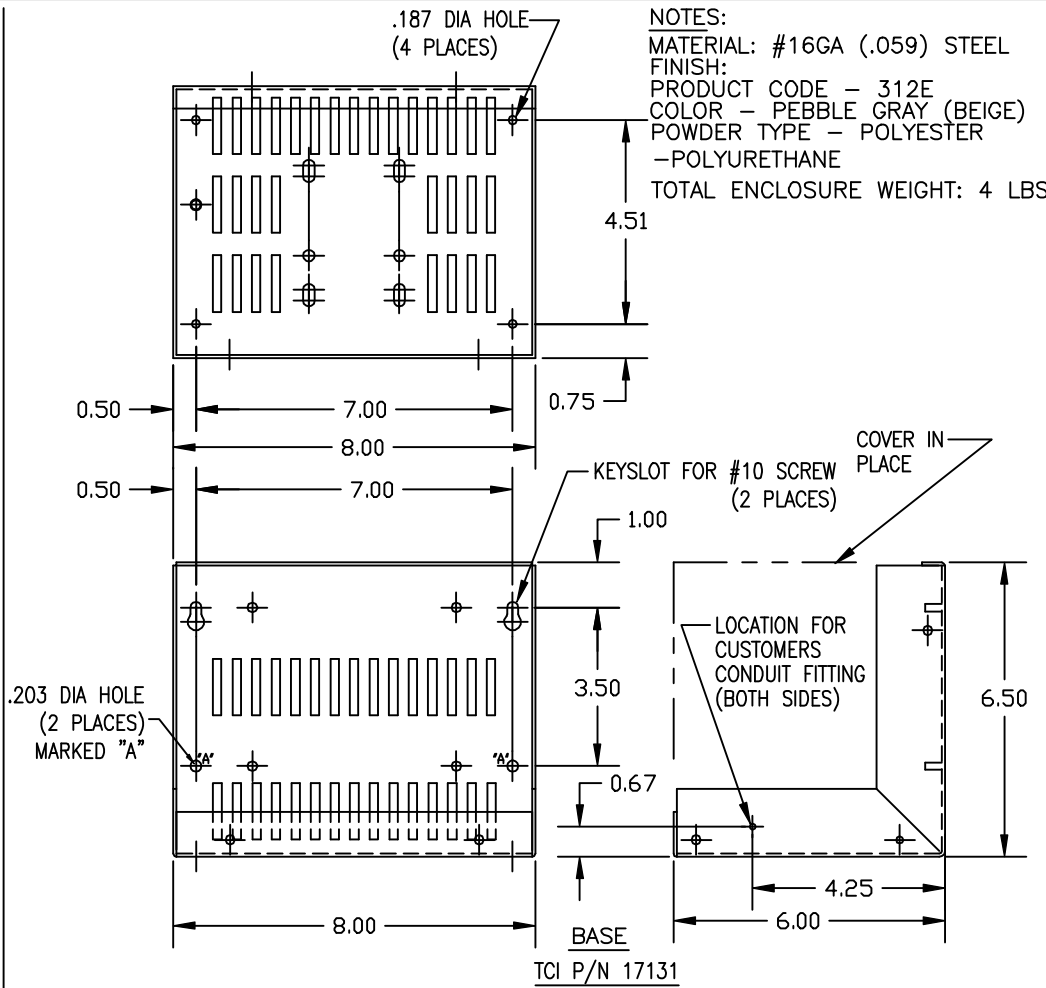


NOTES:  
 MATERIAL: #16GA (.059) STEEL  
 FINISH:  
 PRODUCT CODE - 312E  
 COLOR - PEBBLE GRAY (BEIGE)  
 POWDER TYPE - POLYESTER  
 -POLYURETHANE



COVER  
 TCI P/N 17132

NOTES:  
 MATERIAL: #16GA (.059) STEEL  
 FINISH:  
 PRODUCT CODE - 312E  
 COLOR - PEBBLE GRAY (BEIGE)  
 POWDER TYPE - POLYESTER  
 -POLYURETHANE  
 TOTAL ENCLOSURE WEIGHT: 4 LBS.



BASE  
 TCI P/N 17131

				TOLERANCES (EXCEPT AS NOTED)	
				DECIMAL	
				.XX ± .01	
				.XXX ± .005	
				FRACTIONAL	
				± 1/32	
△	REDRAWN -NO REVS.	4/4/01	RJC	ANGULAR	
NO	REVISION	DATE	BY	± 1/2°	