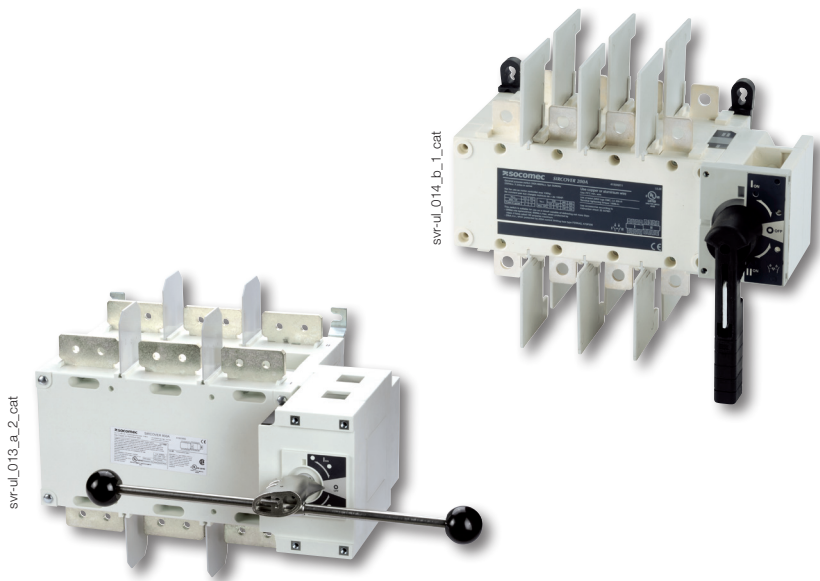


SIRCOVER UL 98/1008

Manually operated transfer switching equipment
from 100 to 1200 A

Transfer switches



Function

SIRCOVER UL 98/1008 are heavy duty manual transfer switches. They ensure switching transfer of sources or transfer of two low voltage circuits on load as well as their safe disconnection.

These switches are extremely durable and are tested and approved for use in the most demanding applications, such as resistive load or total system applications.

Advantages

Stable positions

SIRCOVER UL has three stable positions which are not affected by voltage drops or vibrations, thus protecting your load against network interference.

Compact design

The SIRCOVER UL is based on a back-to-back switching technology, providing a compact solution.

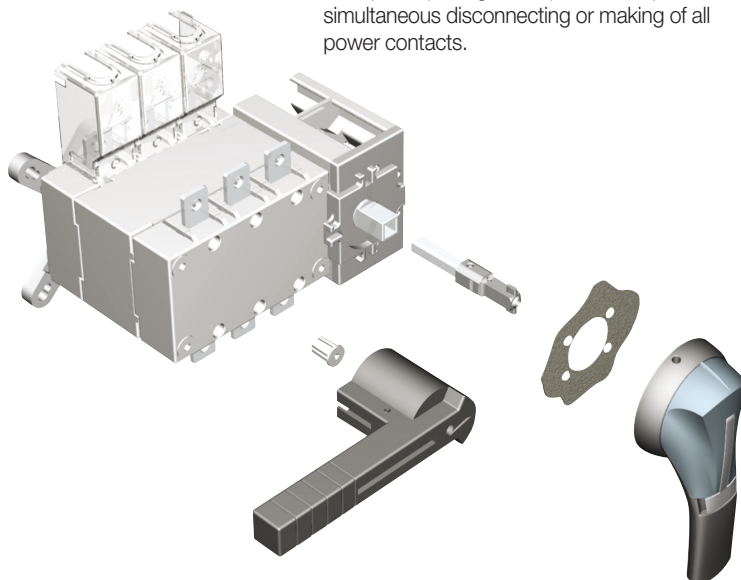
On-load switching

The SIRCOVER UL enables secure and reliable switching, without the need for pre-breaking upstream.

Reliability

The SIRCOVER UL has double breaking per pole achieved through its sliding bar contacts system.

The quick opening and rapid closure provides simultaneous disconnecting or making of all power contacts.



svr_136_a_2_cat

The solution for

- > Standby power builders
- > OEM/Machine Builders
- > Industrial Control Panels Manufacturers (UL 508A)
- > Switchboards Manufacturers (UL 891)
- > Distributors



Strong points

- > Stable positions
- > Compact design
- > On-load switching
- > Reliability

Conformity to standards

- > UL 1008
Guide WPYV
File E317092
- > UL 98
Guide WHTY
File E201138
- > CSA-C22.2 No. 4
Class 4651-02
File 112964



UL 98 and CSA from 600-1200 A. Specific reference from 100 to 400 A on request.

Enclosed solutions

The SIRCOVER UL is also offered enclosed, please consult us for more information.



Enclosed
SIRCOVER

SIRCOVER UL 98/1008

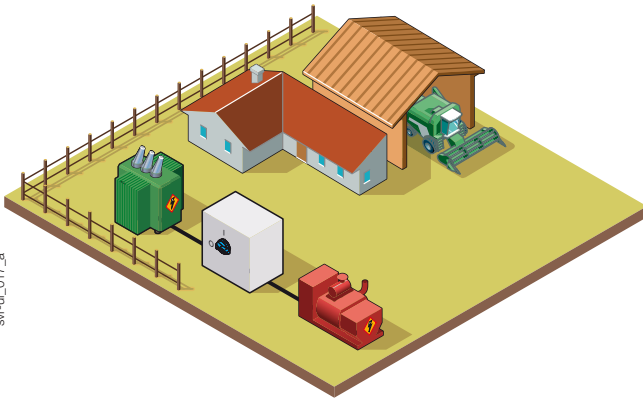
Manually operated transfer switching equipment
from 100 to 1200 A

Typical application

The SIRCOVER UL 98/1008 range provides safe transfer and disconnection within your LV installation for optional standby systems (as described in NEC Article 702).

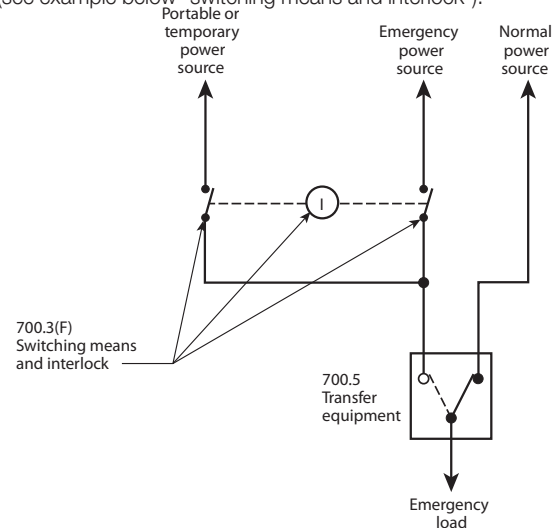
Standard applications also include:

- Transfer from Normal power supply to the backup genset source (emergency supply).
- Safe on load transfer.
- Changing motor phase rotation and equipment grounding connection.



svr-ul_017_a

The SIRCOVER UL 98/1008 can also be used as switching means to a temporary power supply in emergency systems (systems needed for human safety) as described in article 700.3(F) of the NEC (see example below "switching means and interlock").



svr-ul_018_a_1_us_cat.ai

Example of connection for temporary or portable power ⁽¹⁾.

(1) National Fire Protection Agency, NFPA 70: National Electrical Code®, 2017 Edition. Quincy, MA: National Fire Protection Agency, 2016, p. 70–581.

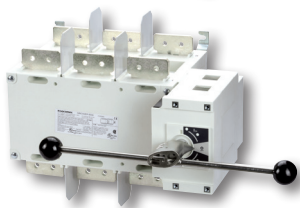
SOCOMEc solution up to 1200 A



UL 1008 Manual Transfer Switch

From 100 to 400 A for resistive and total systems applications.
UL 98 / CSA 22.2 No. 4 versions on request.

svr-ul_014_b_2_cat



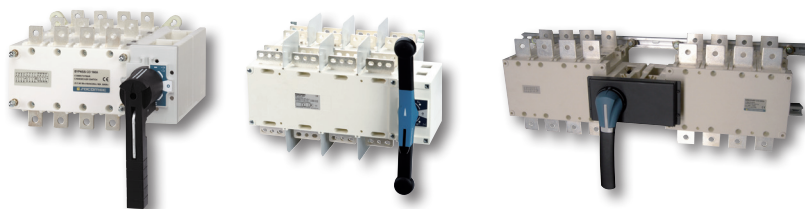
UL 1008 and UL 98 Manual Transfer Switch

From 600 to 1200 A for resistive and total systems applications.
Has UL 98/CSA 22.2 No. 4 certification.

svr-ul_013_a_2_cat

IEC solution up to 3200 A

The SIRCOVER UL 1008 is part of a large range that includes an IEC products of standalone or enclosed manual transfer switches and manual bypass switches with overlapping options. Contact us for further information on our complete range.



SIRCOVER UL 98/1008

Manually operated transfer switching equipment
from 100 to 1200 A

References

SIRCOVER UL 98/1008

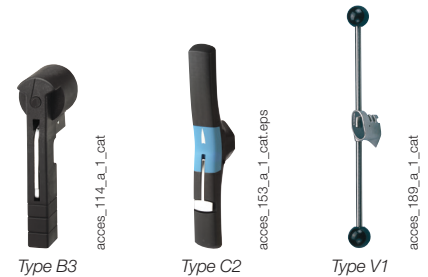
Rating (A)	Frame size	No. of poles	Switch body	Direct handle	External handle	Shaft for external handle	Bridging bars	Auxiliary contacts	Terminal screens
100 A*	B4	2 P	4150 2012	Black 4199 4012	S2 type Black I - 0 - II 4, 4X 142D 2113	S2 type 200 mm 7.9 inches 1400 1020	2 P 4159 2021 3 P 4159 3021 4 P 4159 4021	Contact NO/NC 4159 0021 Low level 4159 0022	2 / 3 P 4158 3021 4 P 4158 4021
		3 P	4150 3012						
		4 P	4150 4012						
200 A*		2 P	4150 2022						
		3 P	4150 3022						
		4 P	4150 4022						
260 A*	B5	2 P	4150 2026	Black 4199 4012	S2 type Black I - 0 - II 4, 4X 142D 2113	S2 type 200 mm 7.9 inches 1400 1020	2 P 4159 2041 3 P 4159 3041 4 P 4159 4041	Contact NO/NC 4159 0021 Low level 4159 0022	2 / 3 P 4158 3041 4 P 4158 4041
		3 P	4150 3026						
		4 P	4150 4026						
400 A*		2 P	4150 2042						
		3 P	4150 3042						
		4 P	4150 4042						
600 A	B6	3 P	4150 3060	Black 4199 7012	S3 type Black I - 0 - II 4, 4X 143D 3113	S3, S4 type 200 mm 7.9 inches 1401 1520	3 P 4159 3063 4 P 4159 4063	Contact NO/NC as standard	3 P 1609 3063 4 P 1609 4063
		4 P	4150 4060						
800 A	B7	3 P	4150 3080	Black 4199 7062	S4 type Black I - 0 - II 4, 4X 144D 3813 ⁽¹⁾	320 mm 12.6 inches 1401 1532	3 P 4159 3080 4 P 4159 4080	Contact NO/NC as standard	3 P 1609 3080 4 P 1609 4080
		4 P	4150 4080						
1200 A		3 P	4150 3120						
		4 P	4150 4120						

Common accessories - more available on next pages.

* From 100 to 400 A, UL 98/CSA-C22.2 No. 4 Specific reference upon request.

Direct handle

Rating (A)	Type	Color	Handle type	Reference
100 ... 400	B3	Black	1 lever	4199 4012
600	J4	Black	2 levers	4199 7012
800 ... 1200	V1	Metal	2 levers	4199 7062



External handle

Rating (A)	Handle type	Color	Nema type	Lockable in 3 positions	Reference
100 ... 400	S2	Black	4, 4X	no	142D 2113
100 ... 400	S2	Red/Yellow	4, 4X	no	142E 2113
100 ... 400	S2	Black	1, 3R, 12	no	142F 2113
100 ... 400	S2	Red/Yellow	1, 3R, 12	no	142G 2113
100 ... 400	S2	Black	4, 4X	yes	142D 2813
100 ... 400	S2	Red/Yellow	4, 4X	yes	142E 2813
100 ... 400	S2	Black	1, 3R, 12	yes	142F 2813
100 ... 400	S2	Red/Yellow	1, 3R, 12	yes	142G 2813
260 ... 600	S3	Black	4, 4X	no	143D 3113
260 ... 600	S3	Red/Yellow	4, 4X	no	143E 3113
260 ... 600	S3	Black	1, 3R, 12	no	143F 3113
260 ... 600	S3	Red/Yellow	1, 3R, 12	no	143G 3113
260 ... 600	S3	Black	4, 4X	yes	143D 3813
260 ... 600	S3	Red/Yellow	4, 4X	yes	143E 3813
260 ... 600	S3	Black	1, 3R, 12	yes	143F 3813
260 ... 600	S3	Red/Yellow	1, 3R, 12	yes	143G 3813
800 ... 1200	S4	Black	4, 4X	no	144D 3113
800 ... 1200	S4	Black	1, 3R, 12	no	144E 3113
800 ... 1200	S4	Black	1, 3R, 12	no	144E 3113
800 ... 1200	S4	Red/Yellow	1, 3R, 12	no	144G 3113
800 ... 1200	S4	Black	4, 4X	yes	144D 3813
800 ... 1200	S4	Red/Yellow	4, 4X	yes	144E 3813
800 ... 1200	S4	Black	1, 3R, 12	yes	144F 3813
800 ... 1200	S4	Red/Yellow	1, 3R, 12	yes	144G 3813

Use

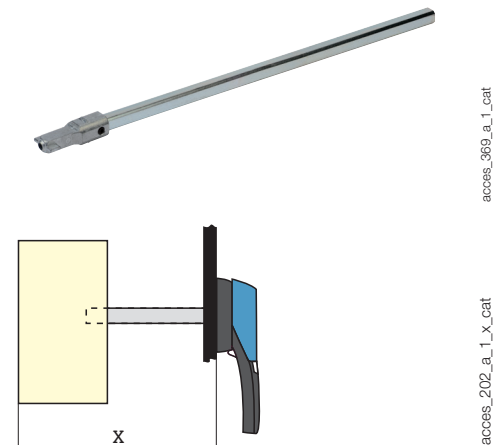
The handle interlocking function prevents the user from opening the door of the enclosure when the switch is in the "ON" position. Opening the door when the switch is in the "ON" position is possible by defeating the interlocking function with the use of a tool (authorized persons only).

The interlocking function is restored when the door is re-closed.



Shaft for external handle

Rating (A)	Handle type	Length (in)	Length (mm)	Dimension X (in)	Dimension X (mm)	Reference
100 ... 400	S2	7.9	200	10 ... 14.3	254 ... 362	1400 1020
100 ... 400	S2	12.6	320	10 ... 19	254 ... 482	1400 1032
100 ... 400	S2	15.7	400	10 ... 22.1	254 ... 562	1400 1040
260 ... 400	S3	7.9	200	12 ... 18.4	305 ... 467	1401 1520
260 ... 400	S3	12.6	320	12 ... 23.1	305 ... 587	1401 1532
260 ... 400	S3	15.7	400	12 ... 26.3	305 ... 667	1401 1540
260 ... 600	S3	7.9	200	20 ... 23.4	508 ... 594	1401 1520
260 ... 600	S3	12.6	320	20 ... 28.1	508 ... 714	1401 1532
260 ... 600	S3	15.7	400	20 ... 31.3	508 ... 794	1401 1540
800 ... 1200	S4	7.9	200	20 ... 23.4	508 ... 594	1401 1520
800 ... 1200	S4	12.6	320	20 ... 28.1	508 ... 714	1401 1532
800 ... 1200	S4	15.7	400	20 ... 31.3	508 ... 794	1401 1540



SIRCOVER UL 98/1008

Manually operated transfer switching equipment
from 100 to 1200 A

Accessories (continued)

Bridging bars

Use

Creation of a common point, above or below the switch, between positions I and II.
Please check the numbers of poles needed.

Rating (A)	No. of poles	Reference
100 ... 200	2 P	4159 2021
100 ... 200	3 P	4159 3021
100 ... 200	4 P	4159 4021
260 ... 400	2 P	4159 2041
260 ... 400	3 P	4159 3041
260 ... 400	4 P	4159 4041
600	3 P	4159 3063
600	4 P	4159 4063
800 ... 1200	3 P	4159 3080
800 ... 1200	4 P	4159 4080



access_205_a_1_cat

Terminal protection screen

Use

Each part number includes top and bottom protection against direct contact with terminals or connecting parts.

Rating (A)	No. of poles	Reference
100 ... 200	2/3 P	4158 3021
100 ... 200	4 P	4158 4021
260 ... 400	2/3 P	4158 3041
260 ... 400	4 P	4158 4041
600	3 P	1609 3063
600	4 P	1609 4063
800 ... 1200	3 P	1609 3080
800 ... 1200	4 P	1609 4080



access_207_a_1_cat

Auxiliary contacts

Use

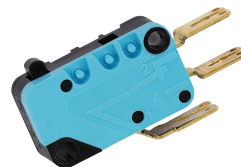
Pre-break and signalization of positions for general applications of 125-250VAC, 60Hz, general use 10A, 1A 1/2 HP.
For low level the application is 125VAC, 60Hz, general use 1A.

Electrical characteristics

A300.

NO/NC auxiliary contact

Rating (A)	Contact (s)	Reference
100 ... 400	NO/NC on position 1 and 2	4159 0021
100 ... 400	Low level NO/NC on position 1 and 2	4159 0022
600 ... 1200	NO/NC on position 1 and 2	as standard



access_065_a_1_cat

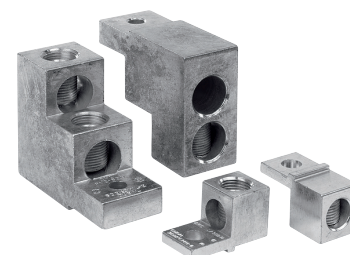
access_065_a_1_cat

Terminal lugs

Use

Connection of bar copper cables onto the terminals (without lugs).

Rating (A)	Wires range	No wires per lug	Lugs per kit	Wires	Reference
100 ... 200	6 - 300MCM	1	2	Cu / Al	3954 2020
100 ... 200	6 - 300MCM	1	3	Cu / Al	3954 3020
100 ... 200	6 - 300MCM	1	4	Cu / Al	3954 4020
260 ... 400	4 - 600MCM	1	2	Cu / Al	3954 2040
260 ... 400	4 - 600MCM	1	3	Cu / Al	3954 3040
260 ... 400	4 - 600MCM	1	4	Cu / Al	3954 4040
600	2x (#2 - 600MCM)	2	3	Cu / Al	3954 3060
600	2x (#2 - 600MCM)	2	4	Cu / Al	3954 4060
800 ... 1200 ⁽¹⁾	2x 2x(#2 - 600MCM)	2	6	Cu / Al	3954 3120
800 ... 1200 ⁽¹⁾	2x 2x(#2 - 600MCM)	2	8	Cu / Al	3954 4120



ul_032_a

(1) To be used to connect 4 wires on one terminal. In such a case, 2 lugs are placed side-by-side on one terminal. Please refer to dimensions diagram

Characteristics

Characteristics according to UL 1008

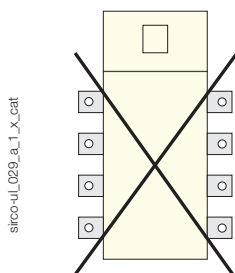
General use rating (A)	100 A	200 A	260 A	400 A	600 A	800 A	1200 A
Frame size	B4		B5		B6	B7	
Operation voltage 2 P - 3/4 P	240/600	240/600	240/600	240/600	-/600	-/600	-/600
Short circuit rating at 600 VAC with fuses (kA)							
Short circuit rating at 600 VAC (kA)	100	100	65	65	100	100	100
Type of fuse	J	J	J	J	L	L	L
Max fuse rating (A)	200	400	600	600	800	1000	1600
Short circuit rating at 600 VAC with "Specific Circuit Breaker" (kA)							
Square D JJ breaker 250 A - 2 P 240 VAC - 3/4 P 480 VAC	65	65	-	-	-	-	-
Schneider Electric NSX-F 160 A - 3/4 P 480 VAC	35	-	-	-	-	-	-
Short circuit rating at 600 VAC with "Any Breaker" (kA)							
Short circuit rating (kA)	10	10	14	14	35	35	35
Short circuit capacity (ms)	25	25	50	50	50	50	50
Rated operational current							
240 VAC "Total System" (A)	100	200	260	400	400	700	700
240 VAC resistive load (A)	100	200	260	400	600	800	1200
480 VAC "Total System" (A)	100	100	260	400	350	600	600
480 VAC resistive load (A)	100	200	260	400	600	800	1200
600 VAC "Total System" (A)	100	100	200	200	-	-	-
600 VAC resistive load (A)	100	200	260	400	600	800	1200
Mechanical endurance							
Endurance (number of operating cycles)	6050	6050	6050	4050	3050	3050	3050
Connection terminals							
Min. connection section / AWG	#6	#6	#4 / 2 X 1 / 0	#4 / 2 X 1 / 0	2 x #2	2 x #2	4 x #2
Max. connection section / AWG	300MCM	300MCM	600MCM / 2 X 250MCM	600MCM / 2 X 250MCM	2x 600MCM	2x 600MCM	4 x 600MCM

Characteristics according to UL 98 and CSA-C22.2 No. 4

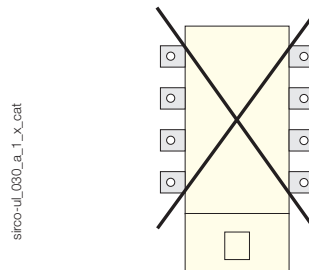
General use rating at 600 VAC and 250 VDC (A)	Specific reference upon request				600 A	800 A	1200 A
Frame size					B6	B7	
Short-circuit rating at 600 VAC (kA)	-	-	-	-	200	100	100
Type of fuse	-	-	-	-	J	L	L
Max. fuse rating (A)	-	-	-	-	600	800	1200
Max. motor, hp / FLA 3 ph motor max.							
220-240 VAC	-	-	-	-	200 / 480	-	-
440-480 VAC	-	-	-	-	400 / 477	-	-
600 VAC	-	-	-	-	500 / 472	-	-
Mechanical characteristics							
Endurance (number of operating cycles)	-	-	-	-	5000	3500	2500
Operating torque (lbs.in/Nm)	-	-	-	-	327.5/37	442.5/50	442.5/50
Auxiliary contacts							
Electrical characteristics	A300	A300	A300	A300	A300	A300	A300

Mounting orientation

100 to 400 A / B4 - B5



600 to 1200 A / B6 - B7

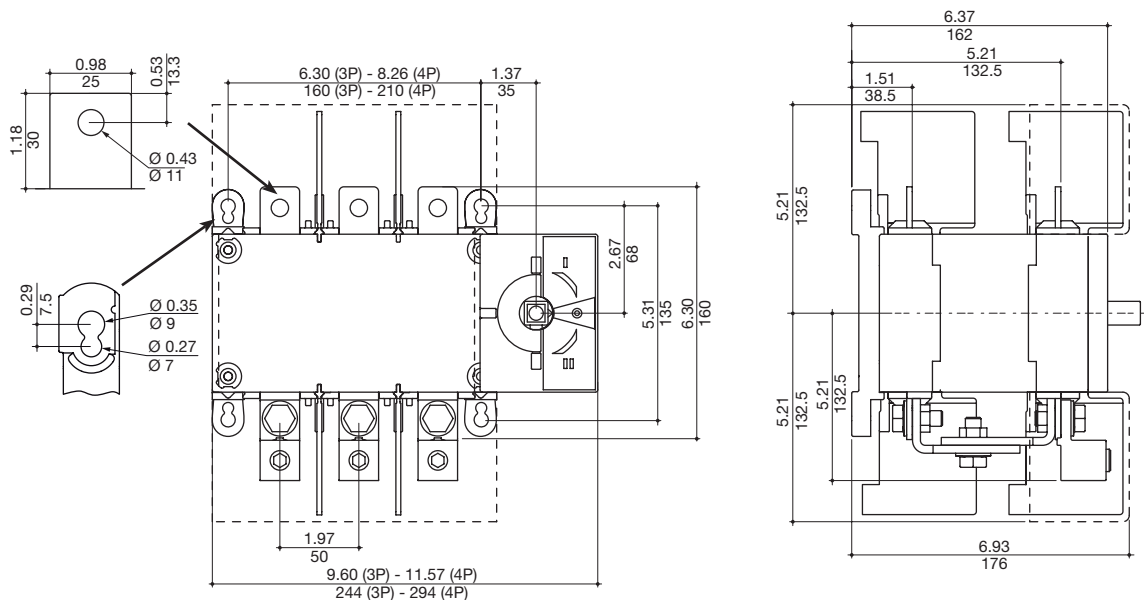


SIRCOVER UL 98/1008

Manually operated transfer switching equipment
from 100 to 1200 A

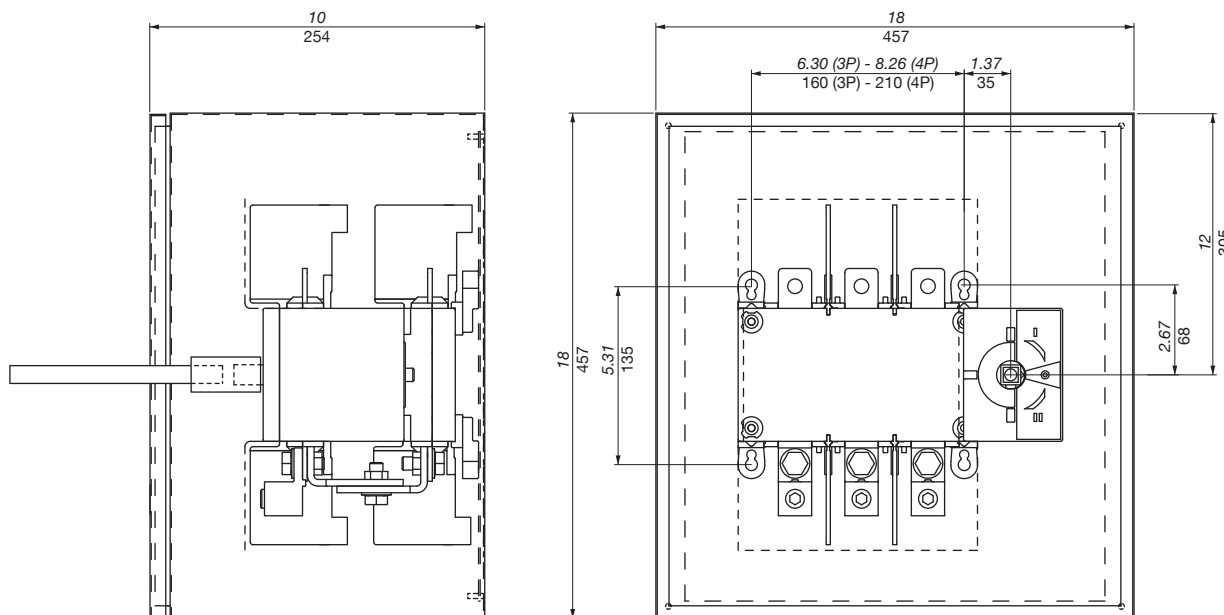
Dimensions (in/mm)

100 to 200 A / B4



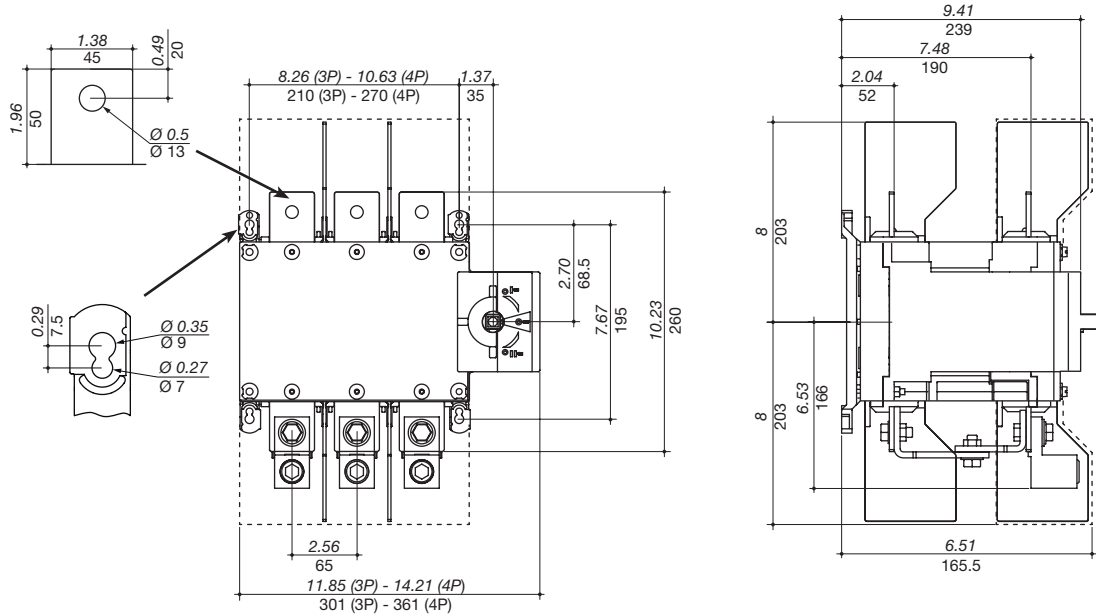
svr-ul_015_d1_x_cat

Minimum enclosure dimensions



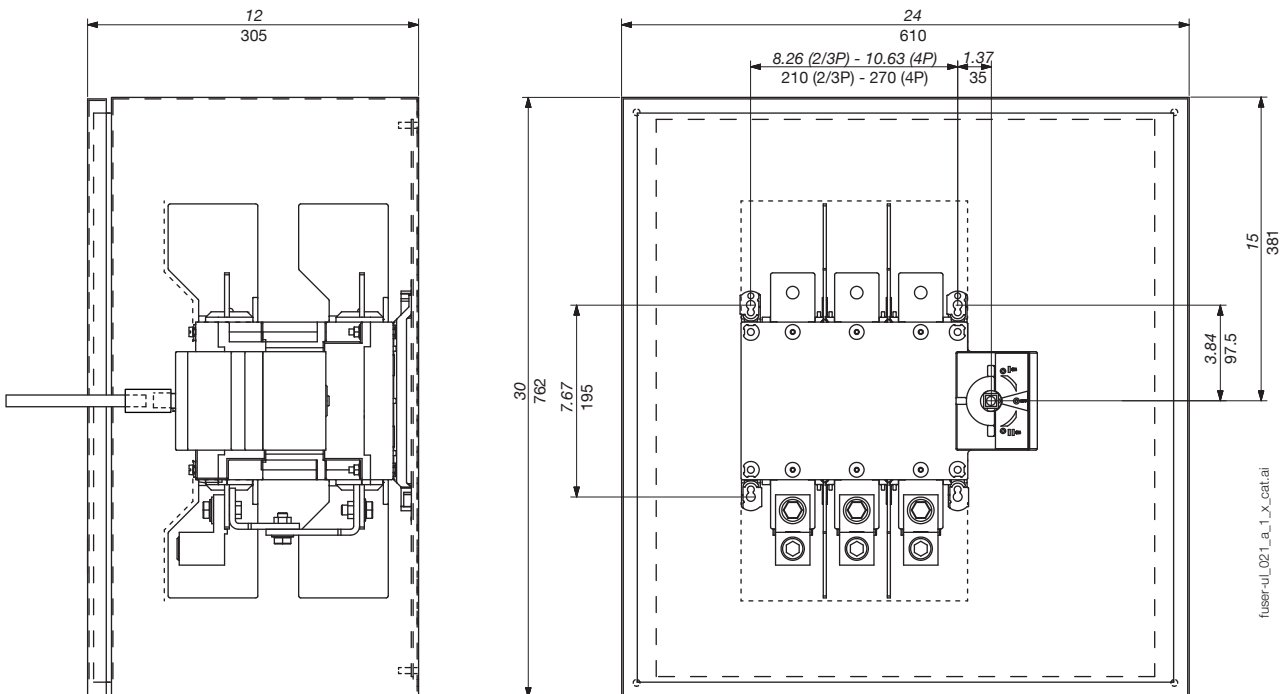
fuser-ul_020_a_1_x_catal

260 to 400 A / B5



svr-ul_016_b_1_x_cat

Minimum enclosure dimensions



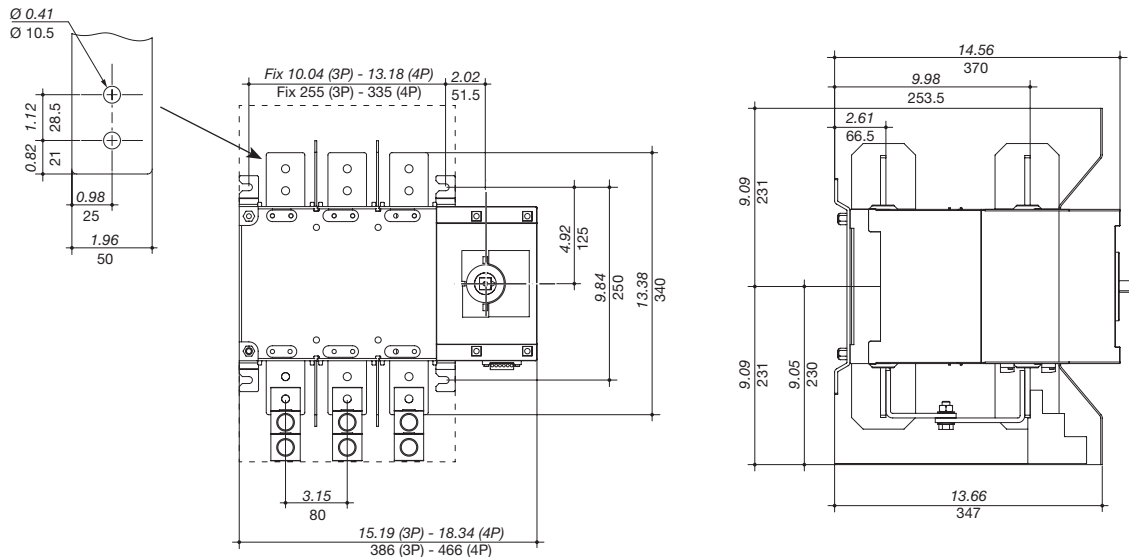
fuser-ul_021_a_1_x_cat.ai

SIRCOVER UL 98/1008

Manually operated transfer switching equipment
from 100 to 1200 A

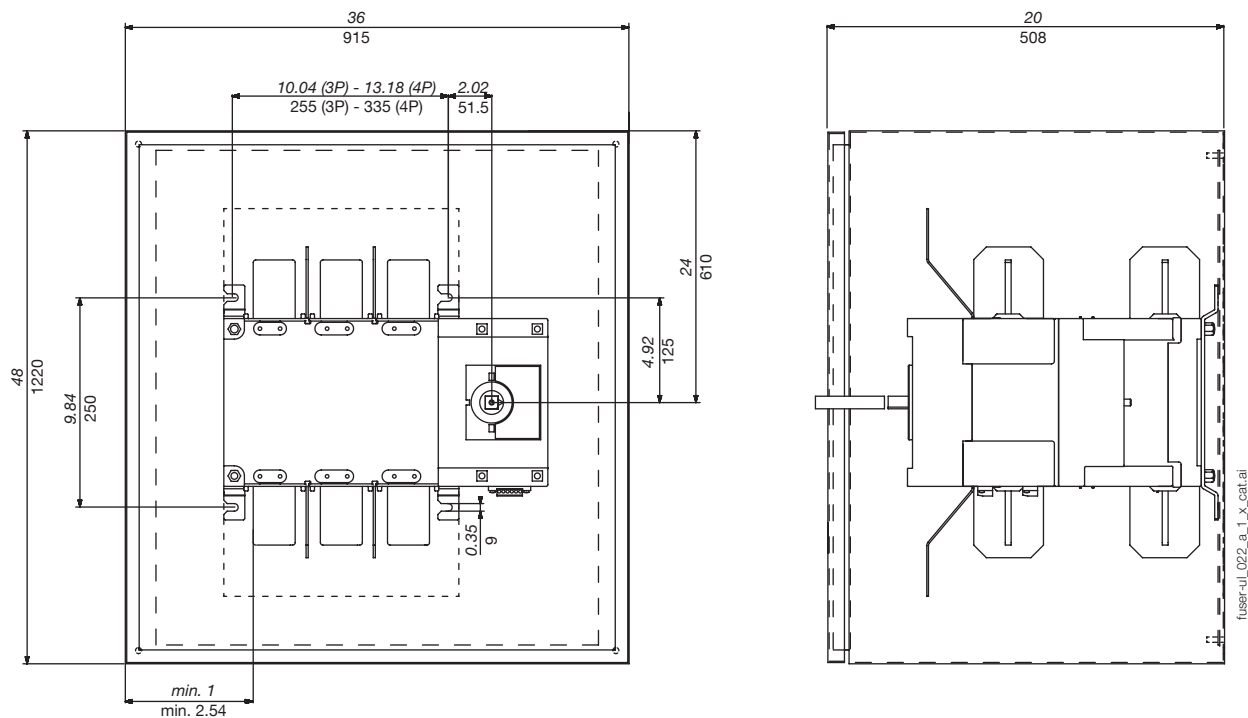
Dimensions (in/mm) (continued)

600 A / B6



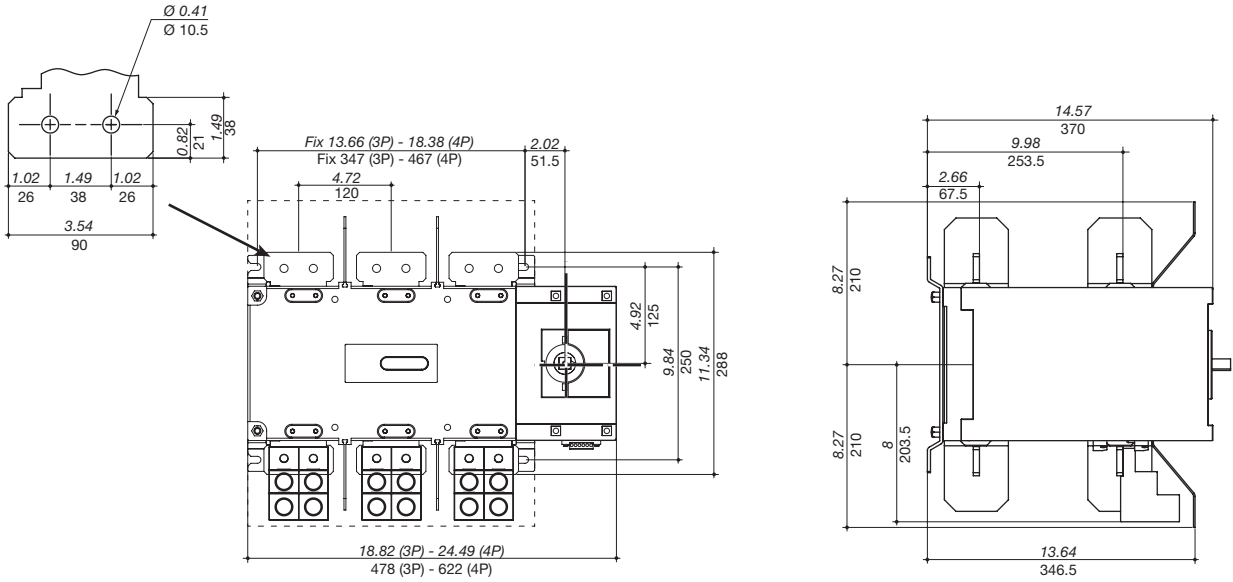
svr-ul_003_b_1_x_cat

Minimum enclosure dimensions



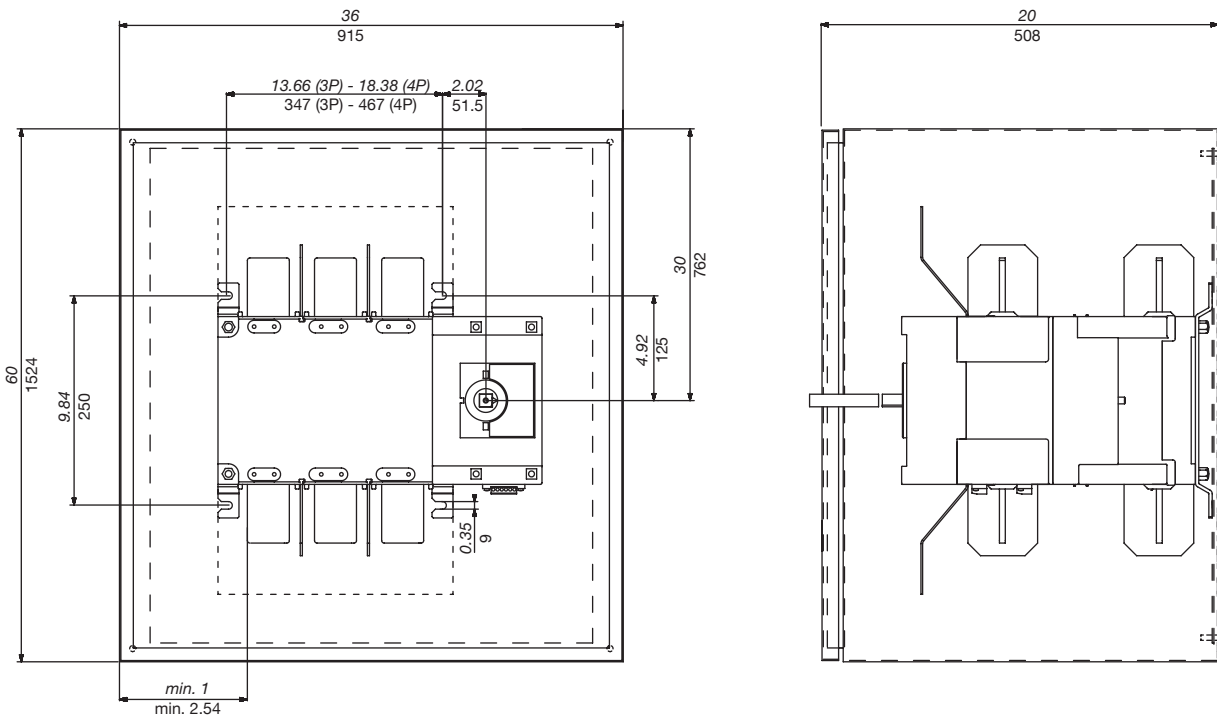
fuser-ul_022_a_1_x_cat

800 to 1200 A / B7



svr-ul_004_d_1_x_cat

Minimum enclosure dimensions



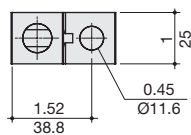
fuser-ul_023_a_1_x_cat.ai

SIRCOVER UL 98/1008

Manually operated transfer switching equipment
from 100 to 1200 A

Terminal lugs (in/mm)

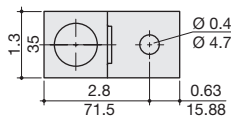
100 to 200 A / B4



300 kcmil

siroco_115_b_1_us_cat

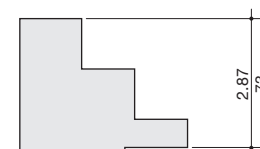
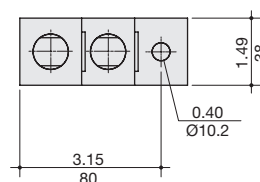
260 to 400 A / B5



600 kcmil

siroco-ul_010_a_1_us_cat

600 to 1200 A / B6 - B7



2 x 600 kcmil

siroco_116_b_1_us_cat

External handles dimensions (in/mm)

100 to 400 A / B4 - B5

Handle type	Front operation Direction of operation	Door drilling
S2 type 		

poign_067_a_1_us_cat

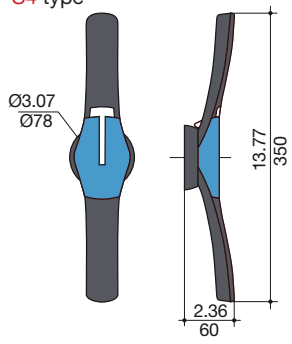
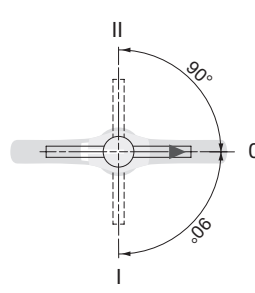
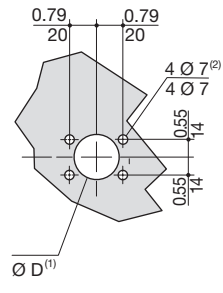
260 and 600 A / B5 - B6

Handle type	Front operation Direction of operation	Door drilling
S3 type 		

poign_064_a_1_fr_cat

External handles dimensions (in/mm) (continued)

800 to 1200 A / B7

Handle type	Front operation Direction of operation	Door drilling
<p>S4 type</p> 		

(1) Ø31 to Ø37: rear screw mounting
 Ø37: front clip mounting

po/ign_0165_a_1_gh_cat