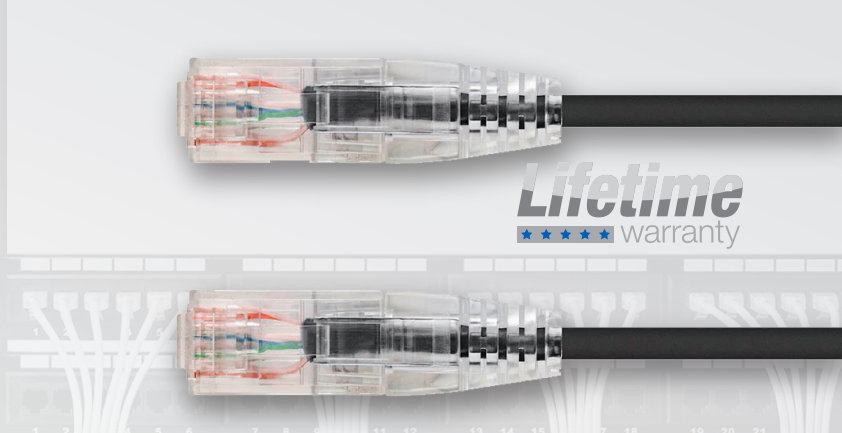


# SlimRun™ CAT6 28AWG UTP Ethernet Patch Cable



**Lifetime**  
★★★★★ warranty

For more information or to order, please contact **Monoprice Sales Representative** or [sales@monoprice.com](mailto:sales@monoprice.com)

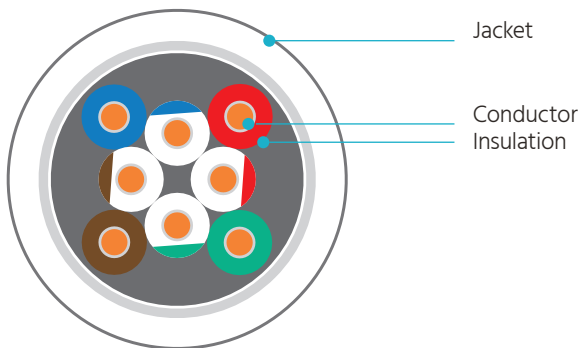
## Construction

<b>Conductor</b>	28AWG
Material:	BC
Nom. OD:	7/0.12±0.008mm
<b>Insulation:</b>	PE
Nominal Thickness:	0.21mm Min: 0.02mm
Nom. OD:	0.56±0.05mm
<b>Jacket</b>	PVC
Nominal Thickness:	0.35mm Min: 0.05mm
Nom. OD:	3.8±0.2mm

## Electrical Characteristics

Conductor Resistance@20 °C ≤ 87.6 Ohms/km

MHz	LOSS	NEXT	RL	ACR-N	ACR-F	PS NEXT	PS ACR-N	PS ACR-F
	dB	dB	dB	dB	dB	dB	dB	dB
1	-	65	19.8	-	-	-	-	-
4	-	65	21.6	-	-	-	-	-
8	-	63.1	22.5	-	-	-	-	-
10	-	61.3	22.8	-	-	-	-	-
16	-	57.5	23.4	-	-	-	-	-
20	-	55.8	23.7	-	-	-	-	-
25	-	54.1	24	-	-	-	-	-
31.25	-	52.3	23	-	-	-	-	-
62.5	-	47.2	20	-	-	-	-	-
100	-	43.8	18	-	-	-	-	-
200	-	39	15	-	-	-	-	-
250	-	37.6	14	-	-	-	-	-

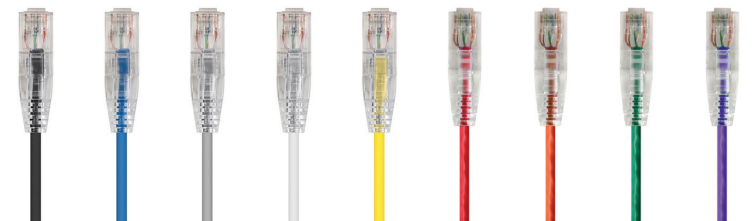


## Mechanical Characteristics

Storage Temperature Range	0 °C to 45 °C
Installation Temperature Range	0 °C to 75 °C
Maximum Pulling Force	100 lbs.

## Wire Connection

Pair 1 White + Blue	Pair 3 White + Green
Pair 2 White + Orange	Pair 4 White + Brown



**Colors:** Black, Blue, Gray, White, Yellow, Red, Orange, Green, and Purple

**Lengths:** 0.5, 1, 2, 3, 5, 7, 10, 14, 20, 25, 30 and 50 feet



## Ratings/Certifications

UL, RoHS, REACH

Jacket Marking: E467139 PATCH CORD UTP CATEGORY 6 28AWG 4PAIRS ANSI/TIA/EIA 568B