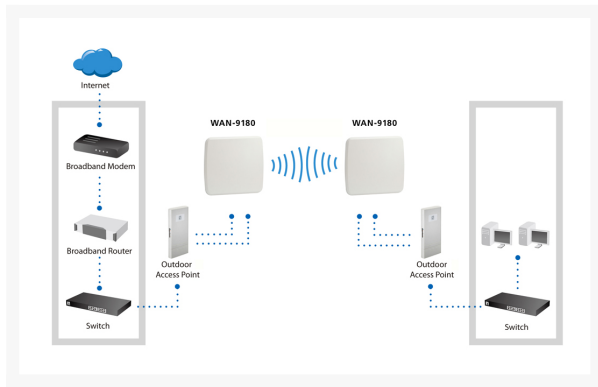


# WAN-9180, 18dBi 5GHz Directional Dual-Polarization Outdoor Panel Antenna

## Product Images





## Short Description

---

- Operates in 5GHz band, according to IEEE 802.11a/n specifications
- Antenna diversity at 18dBi high gain performance
- Dual-Polarization to avoid interference
- Easy to install on the wall surface
- Wideband frequency performance enables future growth and increases flexibility
  - Operates in 5GHz band, according to IEEE 802.11a/n specifications
  - Antenna diversity at 18dBi high gain performance
  - Dual-Polarization to avoid interference
  - Easy to install on the wall surface
  - Wideband frequency performance enables future growth and increases flexibility

## Description

---

The LevelOne WAN-9180 18dBi Directional Dual-Polarization antenna is designed for outdoor wireless connections. With array pattern located at +45° and -45° polarization, you can improve signal strength in a crowded area with possible signal interference. It improves signal strength and coverage in 5GHz band, towards a concentrated enhanced direction.

This panel antenna is easy to mount and install on flat areas such as wall or window. Designed for outdoor elevated installation with high sustainability in strong wind.

## Additional Information

---

5G N female jack	2
Color	White
EAN	4015867164907
Model Number	WAN-9180
Antenna type	Directional
Frequency band	5GHz
Operating temperature	-40°C ~ 80°C
Package Contents	WAN-9180 Pole Mount Kit Quick Installation Guide
Dimensions (W x D x H)	256 x 227 x 19 mm
Product weight (kg)	0.474
Survival wind speed	216km/hr
Frequency band	5.15~5.875GHz
HPBW horizontal	15°
HPBW vertical	15°
Impedance (ohm)	50
Polarization	Linear
VSWR	2.0