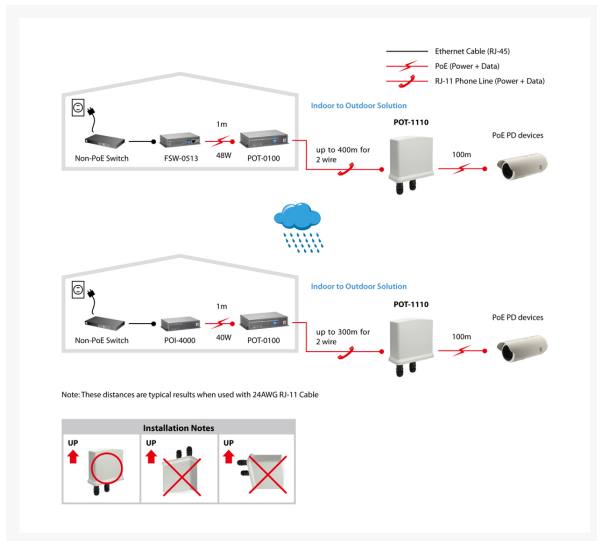


POT-1110 Outdoor PoE Repeater Slave over 2-wire,

Product Images





Short Description

- Easy installation by indoor & outdoor different models
- Up to 15 Watts for remote PoE, Depending on PSE power
- Maximum distance up to 400 meters for 24 AWG cable
- Low-Latency for Video/Voice/Data applications
- Maximum data rate up to 60Mbps full duplex
- Dip Switches for 2-wire line rate settings
- IP65 Weatherproof

Description

The POT system, one master & one slave units, provide a long-reach Ethernet extension with remote Powerover-Ethernet (PoE) capability over a 2-wire line. Connection with a Class 0 PD device, the distance of two-wire 24AWG cables can be up to 400 meters when using a 48Watt high power PoE Switch, FSW-0513/0543. Users may select a fixed data rate for different copper line ranging. The maximum data rate can be up to 60 Mbps full duplex for 2-wire line. The POT master unit is powered by the local PoE Ethernet network, and transmits both the data and power to the remote slave unit over 2-wire cable. The remote unit regenerates the power and provides the PoE capability to power up the remote PD device up to 15watts when connecting to 48Watt High Power Switch, FSW-0513. The POT M/S supports the indoor & outdoor models with wall-mount feature. Equipped with dip switches, the 2-wire line speed can be configured to meet different line gauges and distances. A POT pair offers a cost effective solution for remote power applications such as LAN-to-LAN connectivity, Video Streaming, FTTB, and MDU/MTU over single twisted line. IP65POT-1110 is IP65-compliant meaning it is weatherproof from snow, rain, typhoons, desert heat, etc. This PoE Repeater is up to the challenge for deployment in any harsh weather condition!

Additional Information

Fast Ethernet RJ45	1
RJ11	1
802.3af PoE	1
Color	White
EAN	4015867153604
Model Number	POT-1110
Operating humidity	10% RH ~ 90% RH
Operating temperature	0°C ~ 50°C
Package Contents	POT-1110 Quick Installation Guide
Dimensions (W x D x H)	150 x 235 x 80 mm
Product weight (kg)	0,8
Power Output	DC 44-57V
Standards	Auto-Detection for 10/100 Base-Tx and Half / Full duplex Full compatible with IEEE 802.3 / IEEE802.3u Automatic MDIX Function Auto-Detection for 10/100 Base-Tx and Half / Full duplex Full compatible with IEEE 802.3 / IEEE802.3u Automatic MDIX Function