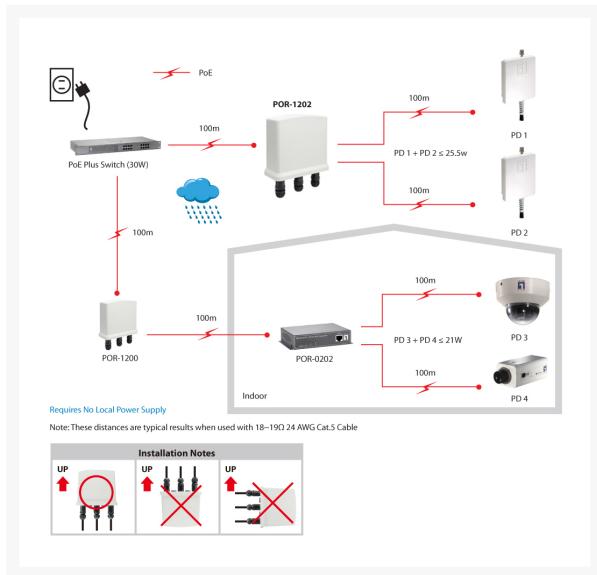


# POR-1202 2-Port Outdoor PoE-Plus Repeater, Cascadable, LevelOne

## Product Images





## Short Description

- High Power Midspan PoE compliant to simplify deployment and installation
- Multiple PoE repeaters can be deployed by daisy chain to extend range
- Forwards 802.3af/802.3at/High-Power PoE to remote device
- Extends PoE connection for another 100 meters
- Built-in 2 PoE ports for PoE devices
- No additional power supply required
- Simple Plug and Play installation
- Weatherproof IP65-rated housing

## Description

Extend the reach of your PoE-Plus devices For system integrators looking for a professional solution to help extend their Outdoor PoE (802.3af/at) network, POR-1202 is the perfect accessory to increase your network performance. As a 2-port repeater, it's now easier to add more devices to the network for greater deployment flexibility. Normal cable runs only reach 100 meters, but with POR-1202 installers can extend the PoE network performance up to 200 meters. Furthermore, you can triple your range or even more by daisy-chaining\* multiple PoE repeaters.\* Maximum distance depends on the required Wattage of the PD. Simple yet durable, no software required As a PoE-Plus Repeater, POR-1202 receives all power from the Power Sending Equipment (PSE), such as a PoE-Plus switch. This means that POR-1202 uses no external power supply, making it the most flexible option for system integrators looking for an easy, affordable solution to increase the distance to the attached devices on a network. POR-1202 has 3 RJ-45 ports for easy deployment, 1 "IN" port that accepts the power and data for the first 100 meters, and 2 "OUT" ports that boosts and extends the power and data an additional 100 meters. Applications POR-1202 is a long-ranged solution for deploying PoE IP Cameras and any Fast Ethernet PoE PD powered by 802.3at PSE.

## Additional Information

---

802.3af/at PoE	2
Color	White
EAN	4015867185605
Model Number	POR-1202
Features	PoE Extension for another 100 meters at 100Mbps
Data rate	Fast Ethernet
Cascadable	Yes
Operating humidity	5% RH ~ 95% RH
Operating temperature	0°C ~ 50°C
Package Contents	POR-1202 Quick Installation Guide Montageset
Dimensions (W x D x H)	200 x 110 x 240 mm
Product weight (kg)	0,7
Indicators	Power, PoE In, PoE Out 1&2
Power consumption	2W (Max.)
Power Output	50W (Max.)
Standards	IEEE 802.3 10Base-T, Ethernet IEEE 802.3u 100Base-TX, Fast Ethernet IEEE 802.3x Ethernet Flow Control