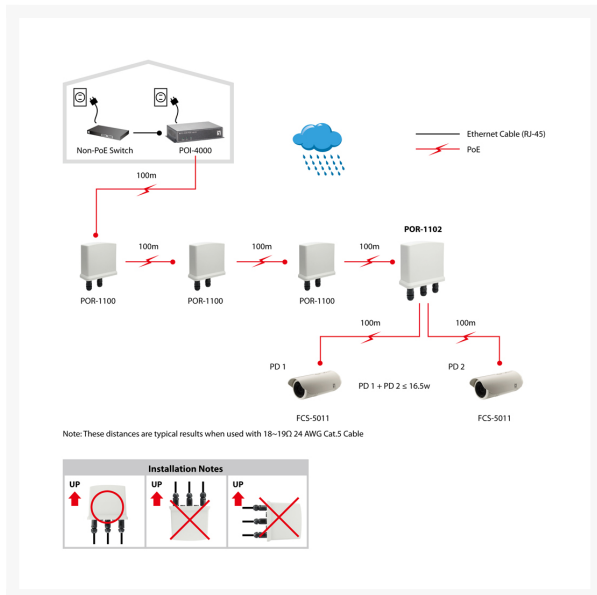


POR-1102 2-Port Outdoor PoE Repeater, Cascadable

Product Images





Short Description

- Enables high-power PoE connectivity for non-PoE device
- Max. power output up to 12VDC/2.5A (30W)
- Forwards 802.3af/High-Power PoE to remote device
- Extends PoE connection for another 100 meters
- Built-in 2 PoE ports for PoE devices
- No additional power supply required
- Simple Plug and Play installation
- Weatherproof IP65-rated housing

Description

Extend the reach of your PoE devices. POR-1102 is the perfect accessory to increase your Power over Ethernet network performance. As a 2-port repeater, it's now easier to add more devices to the network for greater deployment flexibility. Simple yet durable, no software required. As a PoE Repeater, POR-1102 receives all power from the Power Sending Equipment (PSE), for example, a PoE switch. This means that POR-1102 uses no external power supply, making it the most flexible option for system integrators looking for an easy, affordable solution to increase the distance to the attached devices. Applications: POR-1100 is the perfect solution for taking Ethernet to areas such as roof tops, factory floors, airports, and large warehouses. IP65-compliant. POR-1102 is IP65-compliant meaning it is weatherproof from snow, rain, typhoons, desert heat, etc. This PoE Repeater is up to the challenge for deployment in any harsh weather condition! POI-1102 can also work together with LevelOne's high-power PoE injector, POI-4000. This can extend Ethernet connectivity an additional 100 meters for high power PD devices, such as 18 W IP Cameras or other devices that require power greater than 15.4 W.

Additional Information

802.3af PoE	2
Color	White
EAN	4015867149362
Model Number	POR-1102
Features	PoE Extension for another 100 meters at 100Mbps
Data rate	Fast Ethernet
Cascadable	Yes
Operating humidity	5% RH ~ 95% RH
Operating temperature	0°C ~ 50°C
Package Contents	POR-1102 Quick Installation Guide Montageset
Dimensions (W x D x H)	200 x 110 x 240 mm
Product weight (kg)	0,7
Indicators	Power, PoE In, PoE Out 1&2
Power consumption	2W (Max.)
Power Output	50W (Max.)
Standards	IEEE 802.3 10Base-T, Ethernet IEEE 802.3u 100Base-TX, Fast Ethernet IEEE 802.3x Ethernet Flow Control