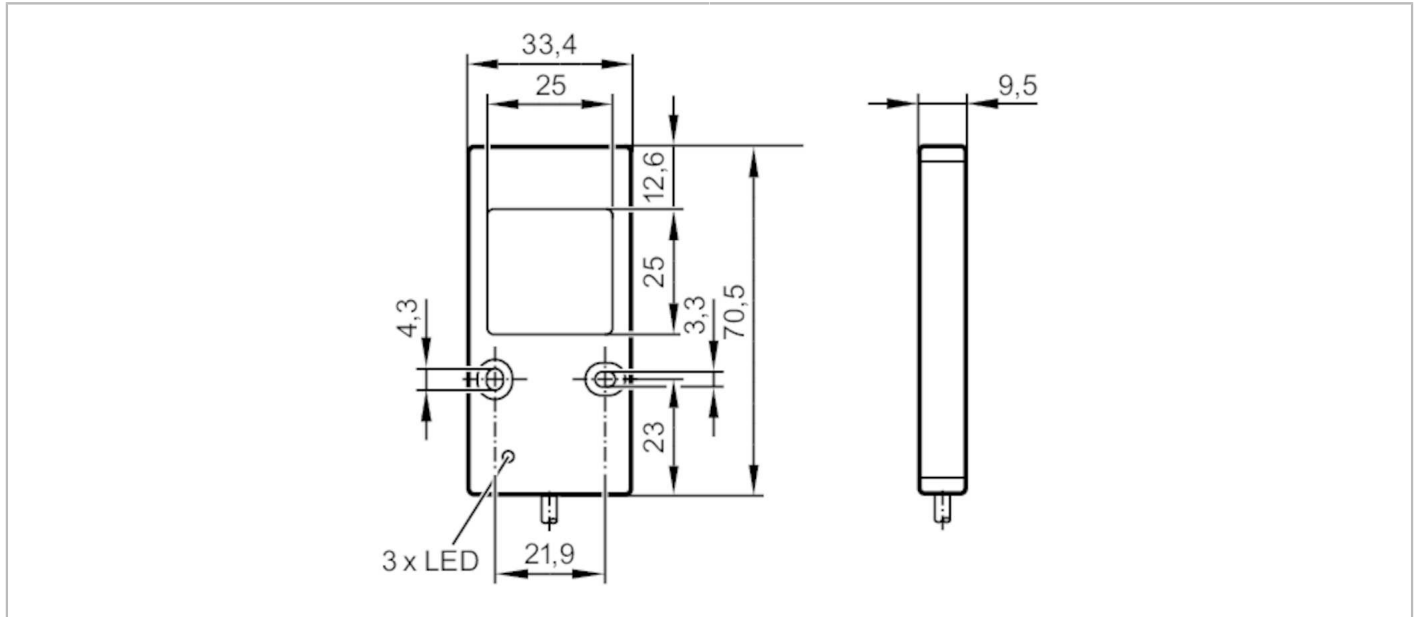


O2D941



External illumination

BACKLIGHT 25X25 IR/0,3M/US



Product characteristics	
Type of light	Infrared light
Application	
System	gold-plated contacts
Illuminated field [mm]	25 x 25
Design	backlight
Type of operation	Permanent light or pulse operation
Electrical data	
Operating voltage tolerance [%]	-10...10
Operating voltage [V]	24 DC
Current consumption [mA]	< 80
Protection class	III
Type of light	Infrared light
Wave length [nm]	875
Inputs	
Trigger	5...24 V
Operating conditions	
Ambient temperature [°C]	-10...50
Protection	IP 54
Overheat protection	yes; (> 50 °C)
Tests / approvals	
Photobiological safety	exempt group; (EN 62471)
MTTF [years]	310
Mechanical data	
Weight [g]	160.4
Dimensions [mm]	70.5 x 33.4 x 9.5

O2D941



External illumination

BACKLIGHT 25X25 IR/0,3M/US

Material	aluminum
Lens material	glass

Displays / operating elements

Display	Illumination status	1 x LED, yellow
	Power	1 x LED, green
	Excess temperature / overload	1 x LED, red

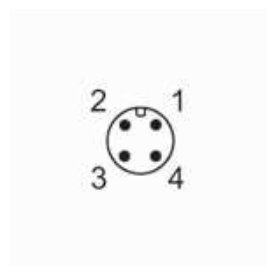
Remarks

Pack quantity	1 pcs.
---------------	--------

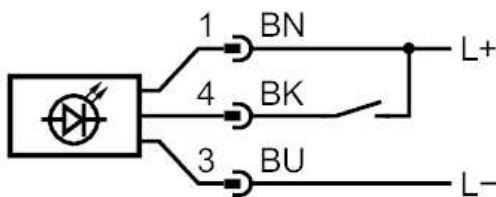
Electrical connection

Cable: 0.30 m, PUR

Connector: 1 x M12; coding: A; Contacts: gold-plated



Connection



- 1 L +
 - 3 L -
 - 4 Trigger
- Core colors :
- BK = black
 - BN = brown
 - BU = blue