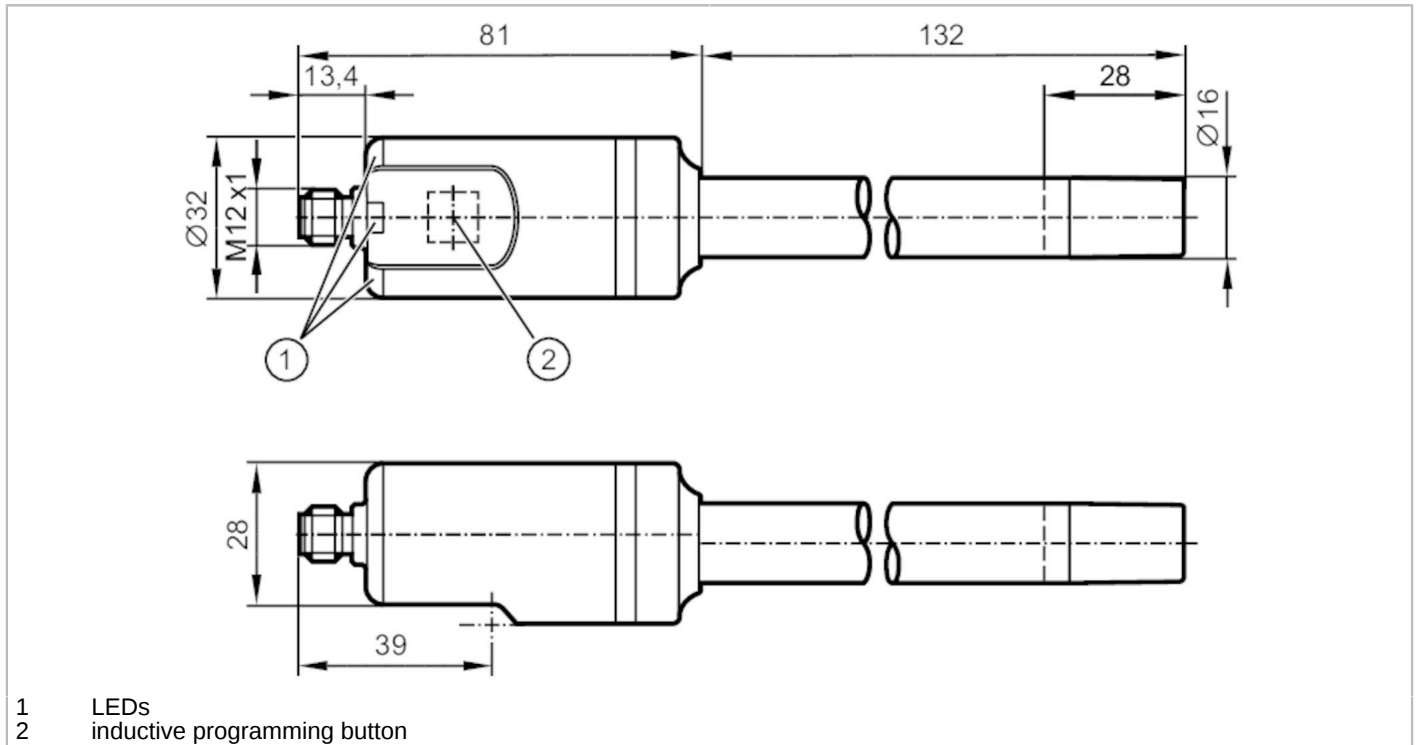


LI2131



Sensor for point level detection

LI0132--K-00KQPKG/US/WHG



- 1 LEDs
- 2 inductive programming button



Product characteristics

Number of inputs and outputs	Number of digital outputs: 2
Factory setting	oils; oil-based media
Probe length L [mm]	132

Application

System	gold-plated contacts
Media	Liquids
Dielectric constant of the medium	> 1,8
Recommended media	water; water-based media; oils; oil-based media
Cannot be used for	See operating instructions, chapter "Intended use".
Medium temperature [°C]	-25...85; (Applications according to the German Federal Water Act (WHG) 0...85°C)
Pressure rating [bar]	0.5
Vacuum resistance [mbar]	-500

Electrical data

Operating voltage [V]	9.6...35 DC; (IO-Link: 18...30 DC)
Current consumption [mA]	< 15
Protection class	III
Reverse polarity protection	yes
Power-on delay time [s]	< 1
Measuring principle	capacitive

Inputs / outputs

Number of inputs and outputs	Number of digital outputs: 2
------------------------------	------------------------------

LI2131



Sensor for point level detection

LI0132--K-00KQPKG/US/WHG

Outputs		
Total number of outputs		2
Output signal		switching signal; IO-Link
Electrical design		PNP/NPN
Number of digital outputs		2
Output function	OUT-OP	normally closed
	OUT2	normally open / closed; (configurable)
Max. voltage drop switching output DC [V]		2.5
Permanent current rating of switching output DC [mA]		100
Short-circuit protection		yes
Type of short-circuit protection		yes (non-latching)
Overload protection		yes
Measuring/setting range		
Factory setting		oils; oil-based media
Probe length L [mm]		132
Active range A [mm]		28
Temperature measurement		
Measuring range [°C]		-25...85
Accuracy / deviations		
Temperature measurement		
Accuracy [K]		1,5
Resolution [K]		0.1
Dynamic response T09 [s]		240
Reaction times		
Response time [s]		< 0.3
Interfaces		
Communication interface		IO-Link
Unterstützte Masterportklasse		A
Transmission type		COM2 (38,4 kBaud)
IO-Link revision		1.1
SDCI standard		IEC 61131-9
Profiles		Smart Sensor ED2: Identification and Diagnosis (0x4000), Measurement Data Channel (0x800A)
SIO mode		yes
Process data analog		5
Process data binary		2
Min. process cycle time [ms]		4.5
Supported DeviceIDs	Type of operation	DeviceID
	default	634
Operating conditions		
Ambient temperature [°C]		-25...85

LI2131



Sensor for point level detection

LI0132--K-00KQPKG/US/WHG

Storage temperature [°C]	-25...85
Protection	IP 68; IP 69K; (7 days / 3 m water depth / 0.3 bar: IP 68)

Tests / approvals

Approval	WHG; General building authority approval; overflow prevention; leakage detection	
EMC	DIN EN 61000-6-2	
	DIN EN 61000-6-3	in a closed metal tank
	DIN EN 61000-6-4	in plastic or open metal tanks
Shock resistance	DIN EN 60068-2-27	12 g (11 ms)
Vibration resistance	DIN EN 60068-2-6	5 g (10...2000 Hz)
MTTF [years]	433	

Mechanical data

Weight [g]	240	
Material	PP fiber-reinforced	
Materials (wetted parts)	PP	
Probe diameter [mm]	16	

Displays / operating elements

Display	Power	LED, green
	Switching status	LED, yellow
Operating elements	inductive programming button	

Remarks

Pack quantity	1 pcs.
---------------	--------

Electrical connection

Connector: 1 x M12; coding: A; Contacts: gold-plated



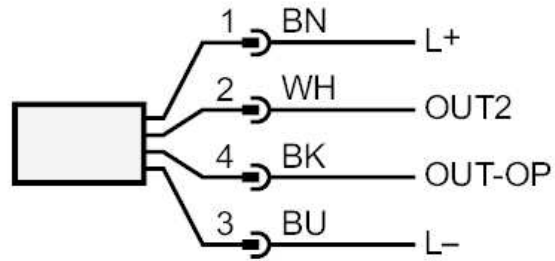
LI2131



Sensor for point level detection

LI0132--K-00KQPKG/US/WHG

Connection



OUT-OP : IO-Link
 Switching output overflow prevention to the German Federal Water Act (WHG)
 Switching output leakage detection to WHG (German Federal Water Act)

OUT2 : Switching output Level
 Switching output temperature