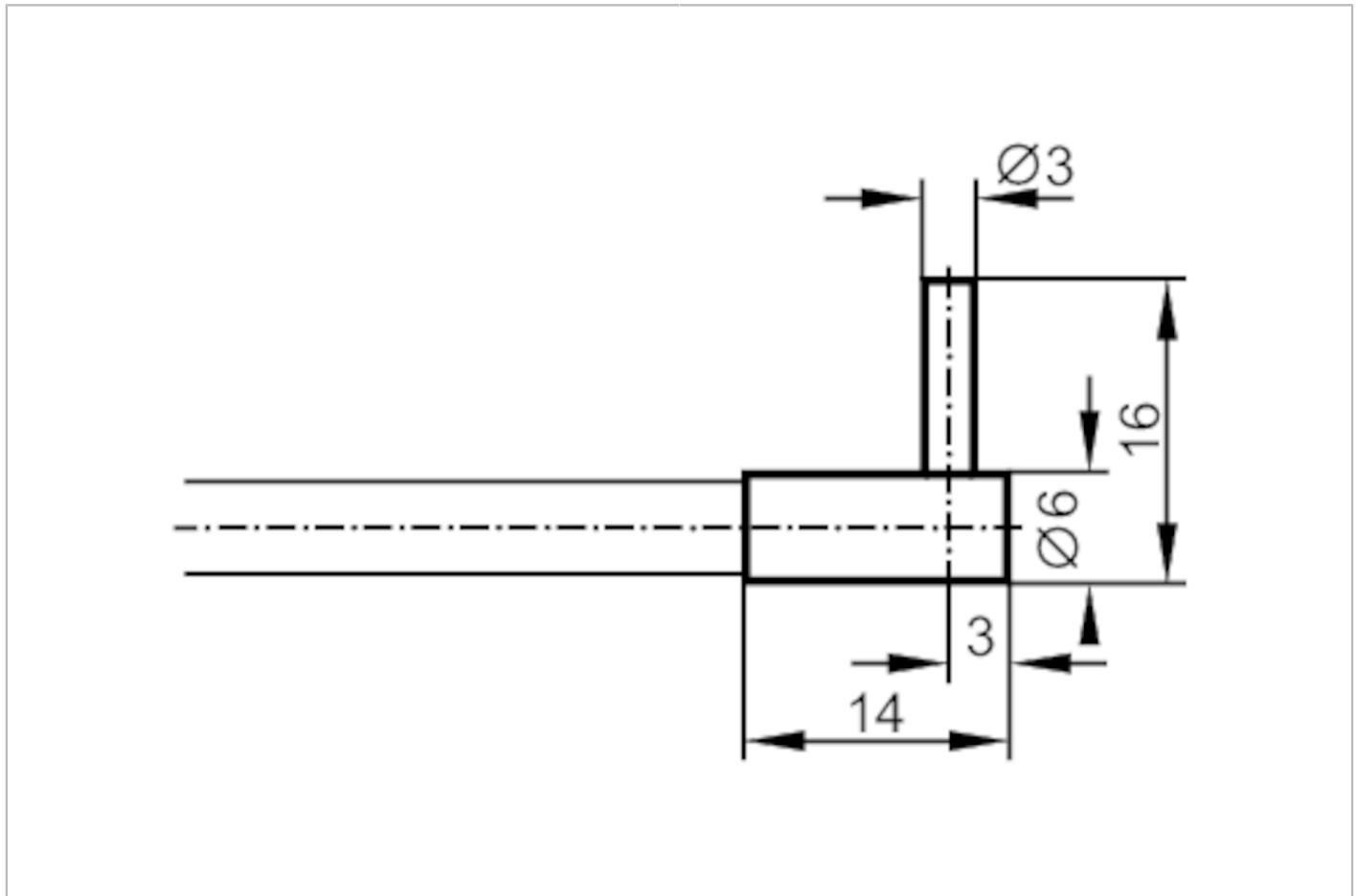




Fiber optic through beam sensor

FE-00-M-V-R3



Application	
Function principle	Through-beam sensor
Application	High temperature resistance; Robust design for use in harsh industrial environments; Resistant to various aggressive chemicals
Monitoring range	
Range with fiber optic amplifier type	OCF; OKF; OOF; OUF
OCF (High Power)	
Range of fiber optics [mm]	1200
OKF	
Range of fiber optics [mm]	120
OOF	
Range of fiber optics [mm]	400
OUF	
Range of fiber optics [mm]	120
Operating conditions	
Ambient temperature [°C]	-20...150
Mechanical data	
Weight [g]	95.5
Version of sensing head	angled
Sensing head diameter [mm]	3

E20493



Fiber optic through beam sensor

FE-00-M-V-R3

Sensing head length	[mm]	10
Total length	[mm]	600
Min. bending radius	[mm]	20
Fiber arrangement		●
Fiber material		glass
Fiber head material		stainless steel (1.4305 / 303)
Fiber sheath material		metal silicone

Accessories

Items supplied	Mounting clamp: 2, E20103
----------------	---------------------------

Remarks

Pack quantity	1 pcs.
---------------	--------