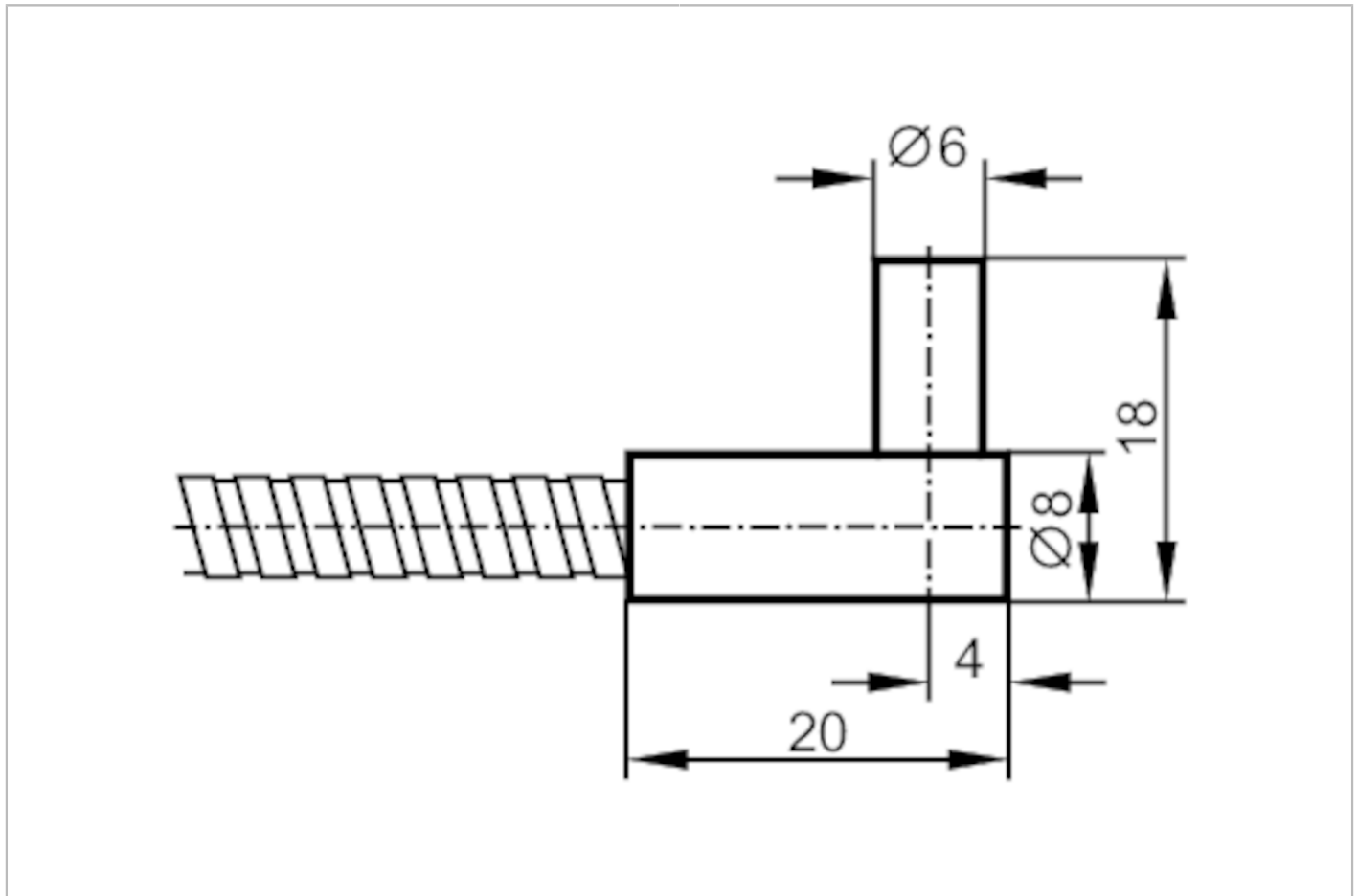


# E20161



## Fiber optic through beam sensor

FE-30-A-A-R6



Application	
Function principle	Through-beam sensor
Application	High temperature resistance; Robust design for use in harsh industrial environments
Monitoring range	
Range with fiber optic amplifier type	OIF
OIF	
Range of fiber optics [mm]	300
Operating conditions	
Ambient temperature [°C]	-40...290
Mechanical data	
Weight [g]	113.5
Version of sensing head	angled
Sensing head diameter [mm]	6
Total length [mm]	600
Min. bending radius [mm]	30; (for fixed installation)
Fiber arrangement	●
Material	Adapter: PA
Fiber material	glass
Fiber head material	aluminum

# E20161



## Fiber optic through beam sensor

FE-30-A-A-R6

Fiber sheath material	aluminum
<b>Accessories</b>	
Items supplied	Mounting clamp:, E10221
<b>Remarks</b>	
Pack quantity	1 pcs.