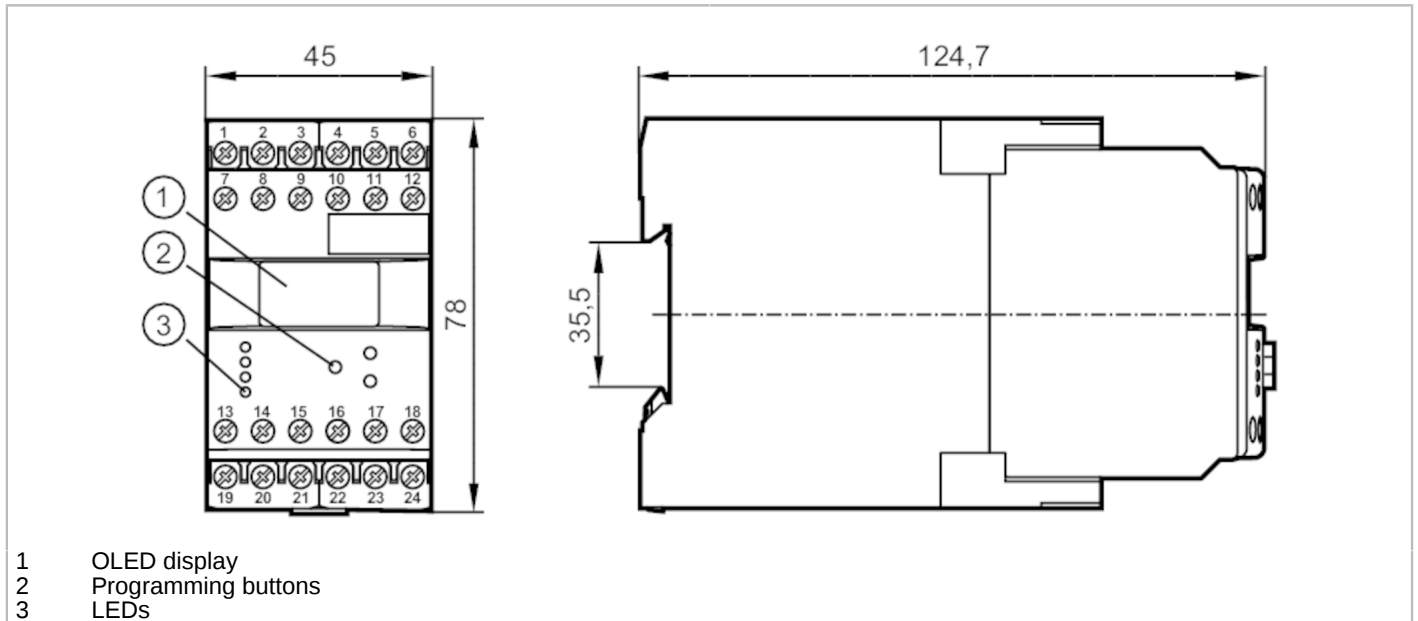


# DR2505



## Evaluation unit for direction and speed monitoring

MONITOR/FD-2 /110-240VAC/DC



| Product characteristics             |   |
|-------------------------------------|---|
| Housing                             | housing for DIN rail mounting   |
| Dimensions [mm]                     | 78 x 45 x 124.7   |
| Application                         |   |
| Application                         | pulse evaluation system with $\mu$ processor for direction monitoring with separate direction indication for "right" and "left" |
| Electrical data                     |   |
| Nominal voltage AC [V]              | 110...240   |
| Nominal voltage DC [V]              | 27  |
| Nominal voltage tolerance [%]       | < 10  |
| Nominal voltage tolerance 2 [%]     | 20...10   |
| Nominal frequency AC [Hz]           | 50...60   |
| Power consumption [W]               | 3   |
| Auxiliary energy for sensors DC [V] | 19.6...27.7; (SELV, $\leq$ 150 mA)  |
| Inputs / outputs                    |   |
| Number of inputs and outputs        | Number of relay outputs: 2  |
| Outputs                             |   |
| Number of relay outputs             | 2   |
| Contact rating                      | 6 A (250 V AC); B300, R300  |
| Operating conditions                |   |
| Ambient temperature [°C]            | -40...60  |
| Storage temperature [°C]            | -40...85  |
| Max. relative air humidity [%]      | 80; (40 °C: 50 %)   |
| Protection                          | IP 50   |
| Protection rating terminals         | IP 20   |

# DR2505



## Evaluation unit for direction and speed monitoring

MONITOR/FD-2 /110-240VAC/DC

| Tests / approvals   |                                |   |
|---|--------------------------------|---|
| EMC   | EN 61010                       | 2011  |
|   | EMV 89/336/EWG                 |   |
|   | EN 61000-6-2                   | 2005  |
|   | EN 61000-6-4                   | 2007  |
| Mechanical data   |                                |   |
| Weight [g]  |                                | 379.5                                       |
| Housing   |                                | housing for DIN rail mounting               |
| Dimensions [mm]   |                                | 78 x 45 x 124.7                             |
| Material  |                                | plastics                                    |
| Displays / operating elements                               |                                |   |
| Display   |                                | OLED display, 128 x 64 pixels luminous      |
|   | Switching status               | LED, green                                  |
| Remarks   |                                |   |
| Remarks   |                                | overvoltage category II; pollution degree 2 |
| Electrical connection                                       |                                |   |
| dual-chamber terminals: 2 x ...2.5 mm <sup>2</sup> ; AWG 14 |                                |   |
| 1   | DC Supply voltage (L-)         |   |
| 2   | DC Supply voltage (L+)         |   |
| 3   | Supply transistor outputs (L+) |   |
| 4   | sensor signal 1 pnp            |   |
| 5   | DC Sensor supply (L+)          |   |
| 6   | DC Sensor supply (L-)          |   |
| 7   | AC Supply voltage (L)          |   |
| 8   | AC Supply voltage (N)          |   |
| 9   | not used                       |   |
| 10  | sensor signal 1 npn            |   |
| 11  | sensor signal 2 pnp            |   |
| 12  | sensor signal 2 npn            |   |
| 13  | Relay 1 common                 |   |
| 14  | Relay 1 normally open          |   |
| 15  | Relay 1 normally closed        |   |
| 16  | transistor output 1 pnp        |   |
| 17  | Reset 1 pnp                    |   |
| 18  | Reset 2 pnp                    |   |
| 19  | Relay 2 common                 |   |
| 20  | Relay 2 normally open          |   |
| 21  | Relay 2 normally closed        |   |
| 22  | not used                       |   |
| 23  | not used                       |   |
| 24  | transistor output 2 pnp        |   |