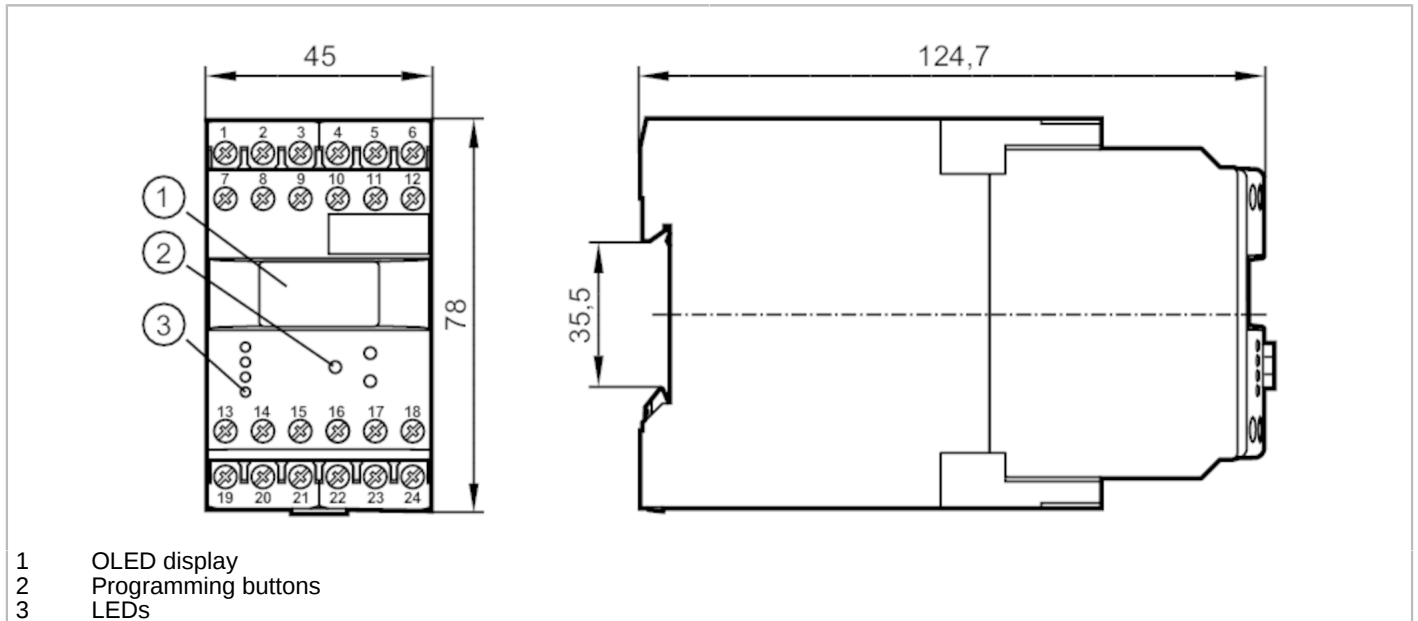


DR2503



Evaluation unit for direction and speed monitoring

MONITOR/FD-1 /110-240VAC/DC



Product characteristics	
Housing	housing for DIN rail mounting
Dimensions [mm]	78 x 45 x 124.7
Application	
Application	pulse evaluation system with microprocessor for direction monitoring and frequency; rotational speed and speed
Electrical data	
Nominal voltage AC [V]	110...240
Nominal voltage DC [V]	27
Nominal voltage tolerance [%]	< 10
Nominal voltage tolerance 2 [%]	20...10
Nominal frequency AC [Hz]	50...60
Power consumption [W]	3
Auxiliary energy for sensors DC [V]	19.6...27.7; (SELV, ≤ 150 mA)
Inputs / outputs	
Number of inputs and outputs	Number of relay outputs: 2
Outputs	
Number of relay outputs	2
Contact rating	6 A (250 V AC); B300, R300
Operating conditions	
Ambient temperature [°C]	-40...60
Storage temperature [°C]	-40...85
Max. relative air humidity [%]	80; (40 °C: 50 %)
Protection	IP 50
Protection rating terminals	IP 20

DR2503



Evaluation unit for direction and speed monitoring

MONITOR/FD-1 /110-240VAC/DC

Tests / approvals		
EMC	EN 61010	2011
	EMV 89/336/EWG	
	EN 61000-6-2	2005
	EN 61000-6-4	2007

Mechanical data	
Weight [g]	380.5
Housing	housing for DIN rail mounting
Dimensions [mm]	78 x 45 x 124.7
Material	plastics

Displays / operating elements	
Display	OLED display, 128 x 64 pixels luminous
Switching status	LED, green

Remarks	
Remarks	overvoltage category II; pollution degree 2

Electrical connection	
dual-chamber terminals: 2 x ...2.5 mm ² ; AWG 14	

1	DC Supply voltage (L-)
2	DC Supply voltage (L+)
3	Supply transistor outputs (L+)
4	sensor signal 1 pnp
5	DC Sensor supply (L+)
6	DC Sensor supply (L-)
7	AC Supply voltage (L)
8	AC Supply voltage (N)
9	not used
10	sensor signal 1 npn
11	sensor signal 2 pnp
12	sensor signal 2 npn
13	Relay 1 common
14	Relay 1 normally open
15	Relay 1 normally closed
16	transistor output 1 pnp
17	Reset 1 pnp
18	Reset 2 pnp
19	Relay 2 common
20	Relay 2 normally open
21	Relay 2 normally closed
22	not used
23	not used
24	transistor output 2 pnp