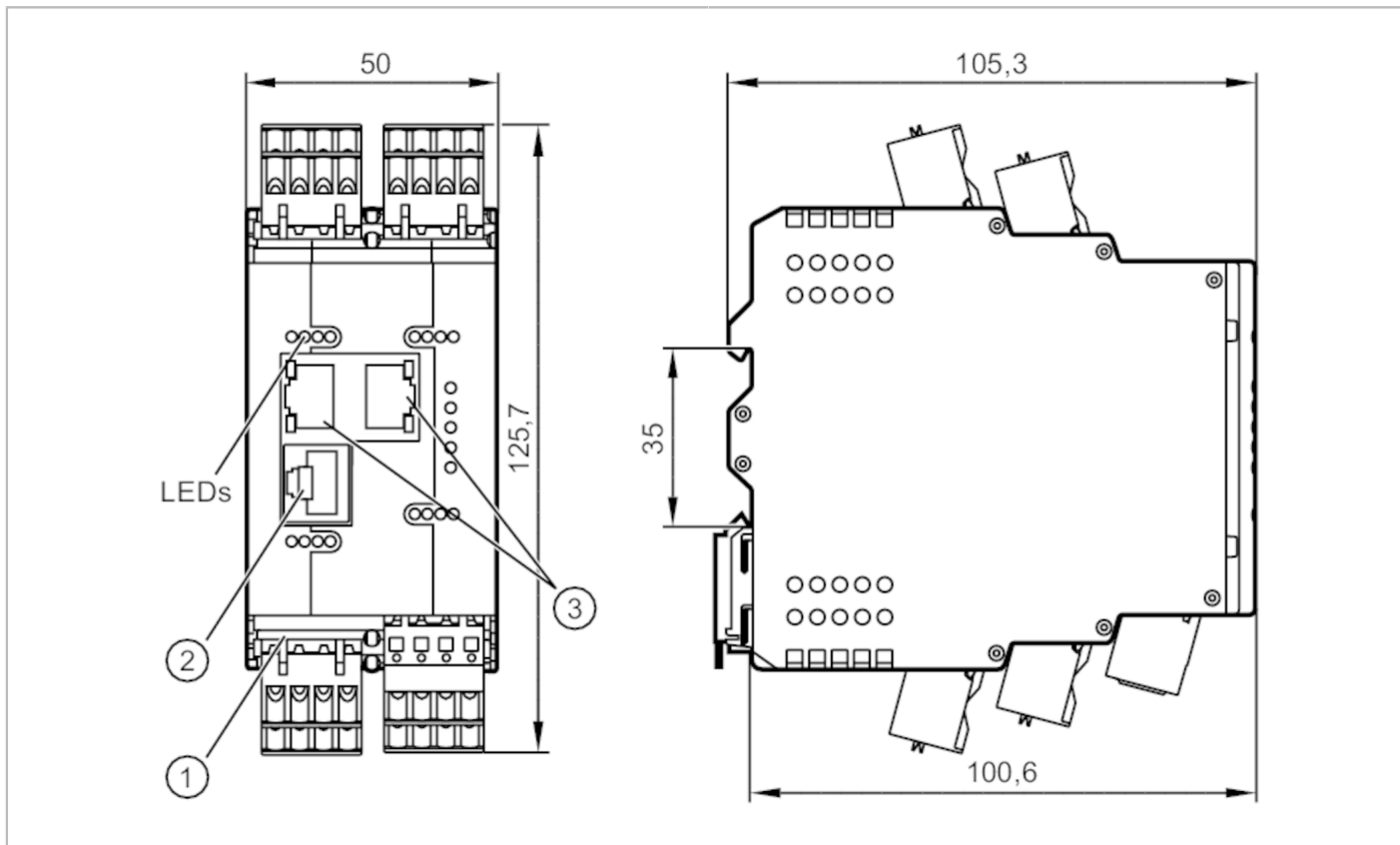


AL1901



IO-Link master with Profinet interface

IO-Link Master CL PN 8P IP20



Application	
Application	I/O modules for use in the control cabinet
Electrical data	
Operating voltage [V]	20...30 DC; (US ; to SELV/PELV)
Current consumption [mA]	300...3900; (US)
Protection class	III
Sensor supply US	
Max. current load total [A]	3.6
Inputs / outputs	
Total number of inputs and outputs	16; (configurable)
Number of inputs and outputs	Number of digital inputs: 8; Number of digital outputs: 8
Inputs	
Number of digital inputs	8; (IO-Link Port Class A)
Switching level high [V]	11...30
Switching level low [V]	0...5
Digital inputs protected against short circuits	yes
Outputs	
Number of digital outputs	8; (IO-Link Port Class A)
Max. current load per output [mA]	300



IO-Link master with Profinet interface

IO-Link Master CL PN 8P IP20

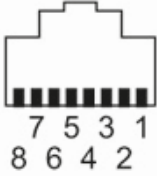
Short-circuit proof	yes
Interfaces	
Communication interface	Ethernet; IO-Link
Ethernet - PROFINET	
Transmission standard	100Base-TX
Transmission rate	100 MBit/s
Protocol	PROFINET
Factory settings	IP address: 0.0.0.0
	subnet mask: 0.0.0.0
	gateway IP address: 0.0.0.0
	MAC address: see type label
Note on interfaces	IO-Link Integration Edition 2
	CC-C (Conformance Class C) (IRT-Switch)
	S2 redundancy
	Netload Class III
	CiR (Configuration in Run)
	SNMP (Simple Network Management Protocol)
	MRP (Media Redundancy Protocol)
	Supported network topologies: line
	ring
	Ethernet - Internet of Things
Transmission standard	10Base-T; 100Base-TX
Transmission rate	10 MBit/s; 100 MBit/s
Protocol	MQTT JSON
Factory settings	IP address: 169.254.x.x
	subnet mask: 255.255.0.0
	gateway IP address: 0.0.0.0
	MAC address: see type label
Note on interfaces	Safety protocol: HTTPS
IO-Link Master	
Transmission type	COM1 (4,8 kBaud); COM2 (38,4 kBaud); COM3 (230,4 kBaud)
IO-Link revision	1.1
Number of ports class A	8
Operating conditions	
Ambient temperature [°C]	-25...65
Storage temperature [°C]	-25...85
Max. relative air humidity [%]	90
Protection	IP 20
Tests / approvals	
EMC	EN 61000-6-2
	EN 61000-6-4
Mechanical data	
Weight [g]	317.9
Material	housing: PA orange

AL1901



IO-Link master with Profinet interface

IO-Link Master CL PN 8P IP20

Accessories	
Items supplied	cage clamps: 9
Remarks	
Remarks	Further information is available in the manual.
Pack quantity	1 pcs.
Electrical connection	
voltage supply X31	
1	GND (US)
2	GND (US)
3	+ 24 V DC (US)
4	+ 24 V DC (US)
IO-Link Port Class A X01...X08	
1	Sensor supply (US) L+
2	Digital input
3	Sensor supply (US) L-
4	C/Q IO-Link
Electrical connection - Ethernet	
Connector: RJ45	
	
EtherNet IP X21, X22	
1	TX +
2	TX -
3	RX +
4	not used
5	not used
6	RX -
7	not used
8	not used
IoT X23	
1	TX +
2	TX -
3	RX x
4	not used
5	not used
6	RX -
7	not used
8	not used