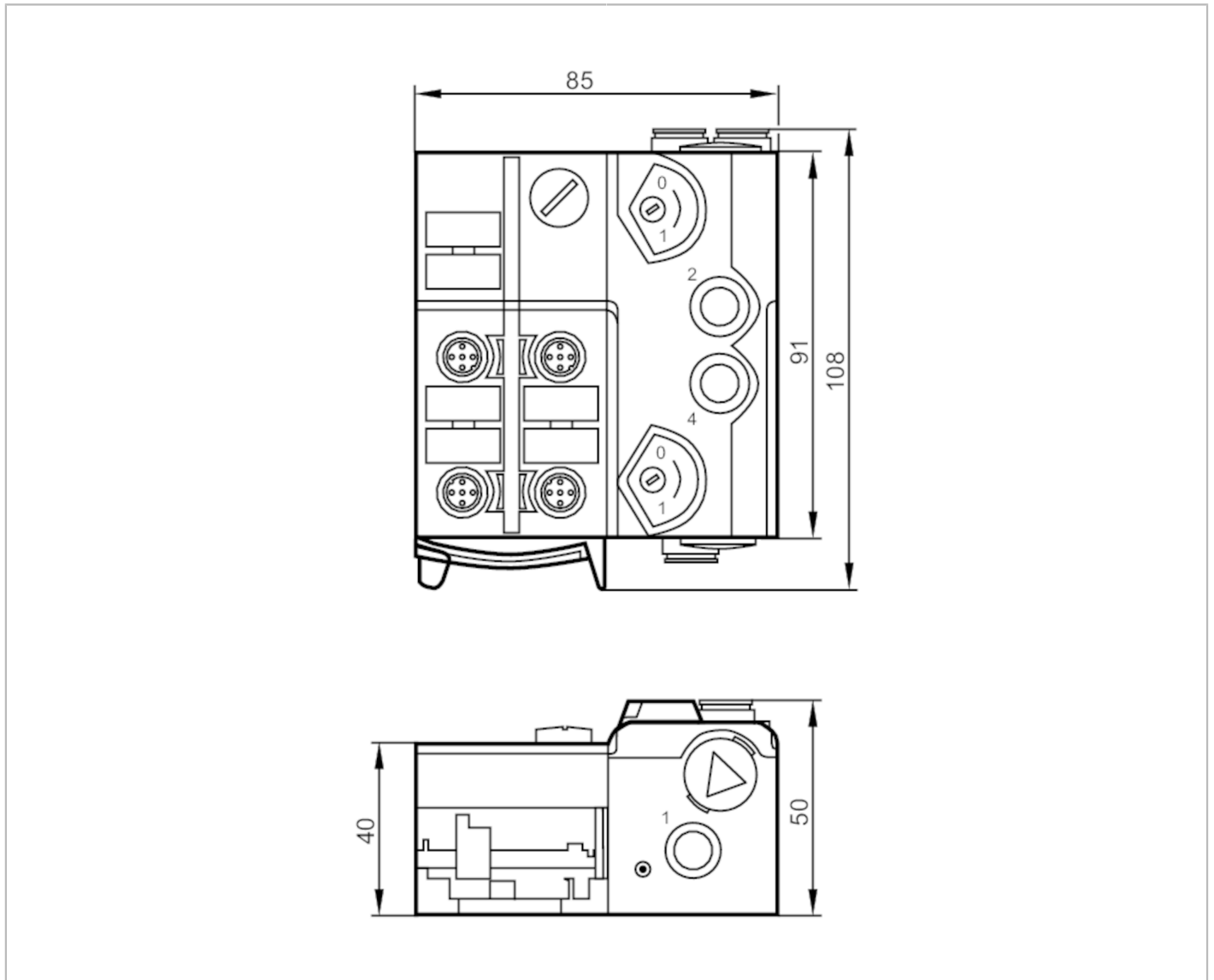


# AC5227



## AS-Interface Airbox with quick mounting technology

AirBox 2x3/2 2DI IP67



Application	
Application	field installation
Medium temperature [°C]	-10...50
Electrical data	
Operating voltage [V]	26.5...31.6 DC
Max. current consumption from AS-i [mA]	180
Integrated watchdog	yes
Inputs / outputs	
Number of inputs and outputs	Number of digital inputs: 2; Number of pneumatic outputs: 2
Inputs	
Number of digital inputs	2
Input circuit of digital inputs	PNP
Sensor supply of the inputs	AS-i

# AC5227



## AS-Interface Airbox with quick mounting technology

AirBox 2x3/2 2DI IP67

Voltage supply	[V]	20...30; (via flat cable)				
Max. total current rating of inputs	[mA]	100				
Input current High	[mA]	6...10				
Input current low	[mA]	0...2				
Switching level high	[V]	> 11				
Digital inputs protected against short circuits		yes				
<b>Outputs</b>						
Number of pneumatic outputs		2				
Actuator supply outputs		AS-i				
<b>Operating conditions</b>						
Ambient temperature	[°C]	-10...55				
Protection		IP 67				
<b>Tests / approvals</b>						
EMC		EN 50295				
		IEC 61000-6-2				
MTTF	[years]	321				
<b>AS-i classification</b>						
AS-i version		2.11; 3.0				
AS-i addressing		Addressing socket				
Extended addressing mode		no				
AS-i master profile		M2; M3; M4				
AS-i profile		S-3.F.F				
AS-i I/O configuration	[hex]	3				
AS-i ID code	[hex]	F.F				
Data bits		Data bit	D0	D1	D2	D3
		Input	1	2	3	4
		Socket	I-1	I-2	-	-
		Pin	2+4	2+4	-	-
		pneumatic output	-	-	2	4
<b>Mechanical data</b>						
Weight	[g]	355.9				
Type of mounting		quick mounting				
Material		PA; POM; Piercing contacts: CuSn6 nickel-plated and tin-plated				
Pneumatic system		2 x 3/2-way slide valves (free from overlapping)				
Operating pressure range	[bar]	2...8				
Operating pressure range	[MPa]	0.2...0.8				
Operating pressure range	[psi]	29...116				
Air flow at 6/5 bar	[l/min]	500				
Permissible compressed air		non-lubricated compressed air class 6-3-1; lubricated compressed air class 6-3-4				
Manual override		pressing/releasing or pressing/turning/locking				
Tube fittings		8 mm				
Exhaust		exhaust can be discharged through tube connection				

# AC5227



## AS-Interface Airbox with quick mounting technology

AirBox 2x3/2 2DI IP67

### Displays / operating elements

Display	Power	LED, green
	errors	LED, red
	Function	LED, yellow

### Electrical connection

Module connection	Flat cable
-------------------	------------

### Accessories

Items supplied	lower part
Accessories (optional)	Mounting plate:, E74999
	Module lower part:, E75000
	Protective cap: M12, E73004
	sealing plug:, E75231
	Silencer:, E75232
	Push-in L-fitting:, E75228
	Push-in T-fitting:, E75227

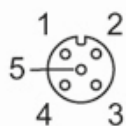
### Remarks

Remarks	If not pneumatically operated, E75231 sealing plug must be inserted.
	Avoid ingress of dirt and dust.
	Do not connect any of the following points to an external potential:
	L-, L+, I-1, I-2
	The connections are electrically connected with the AS-i cable.
Pack quantity	Please see the notes on compressed air and EMC/ESD under "Downloads"
	1 pcs.

### Electrical connection

quick mounting technology for AS-i flat cable: ; three selectable directions

Connector: M12; coding: A



	Inputs
1	voltage supply L+
2	not used
3	Sensor supply L-
4	Data input
5	not used

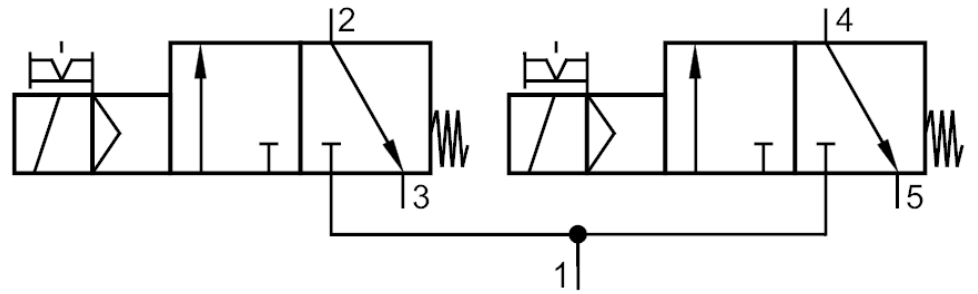


## AS-Interface Airbox with quick mounting technology

AirBox 2x3/2 2DI IP67

### Diagrams and graphs

Pneumatic symbol



2 x 3/2-way slide valves (free from overlapping)