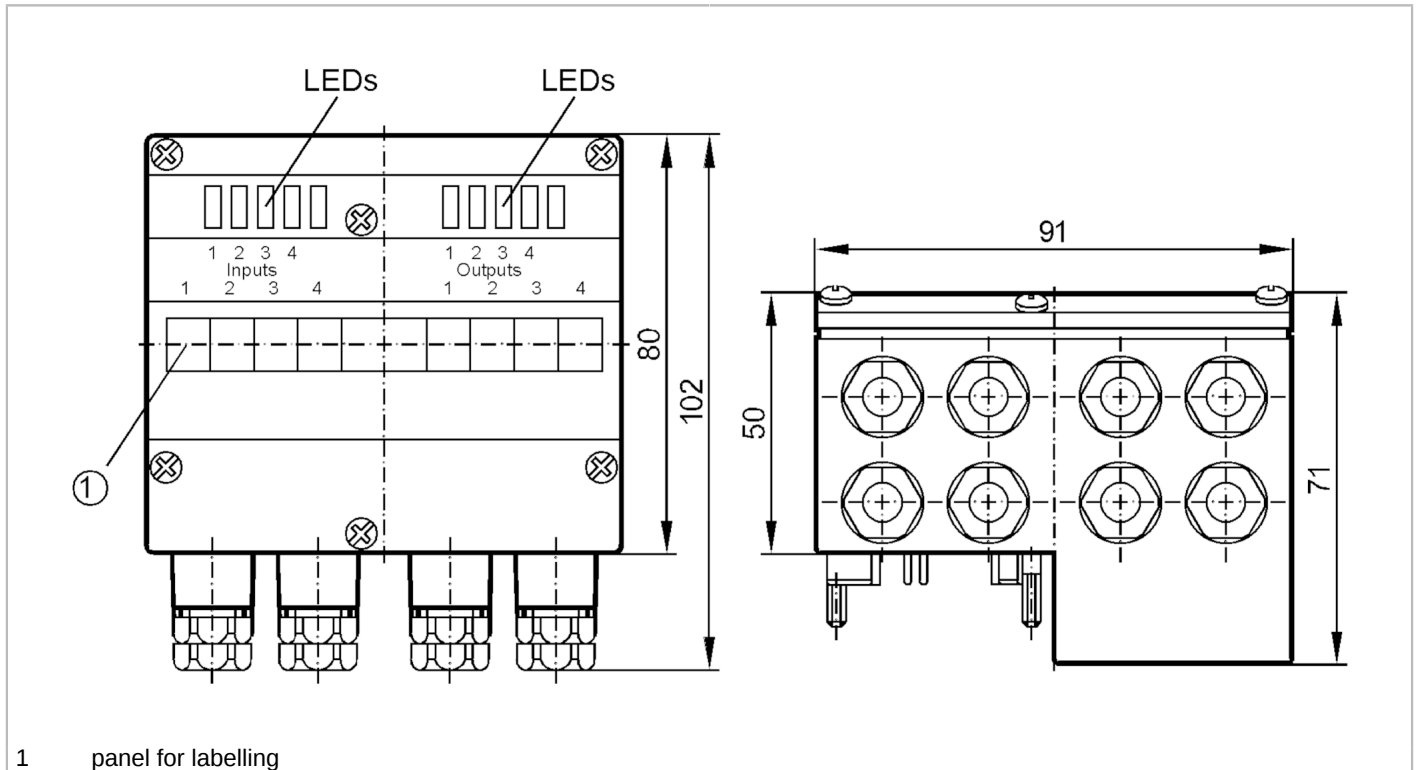


# AC2035



## AS-Interface universal module

EEMS/Module/4DI/4DO/T/CCT



Application	
Application	field installation
Electrical data	
Operating voltage [V]	26.5...31.6 DC
Max. current consumption from AS-i [mA]	230
Max. current load total [A]	4
Integrated watchdog	yes
Inputs / outputs	
Number of inputs and outputs	Number of digital inputs: 4; Number of digital outputs: 4
Inputs	
Number of digital inputs	4
Input circuit of digital inputs	PNP
Sensor supply of the inputs	AS-i
Voltage supply [V]	20...30
Max. total current rating of inputs [mA]	200
Input current High [mA]	> 5
Input current low [mA]	< 3
Switching level high [V]	> 10
Digital inputs protected against short circuits	yes

# AC2035



## AS-Interface universal module

EEMS/Module/4DI/4DO/T/CCT

Outputs	
Number of digital outputs	4
Circuit	PNP
Voltage range DC [V]	24; (to PELV)
Max. current load per output [mA]	1000; (DC-12 / DC-13)
Short-circuit proof	yes
Electrically separated	yes
Actuator supply outputs	AUX

Operating conditions	
Ambient temperature [°C]	-25...60
Protection	IP 65

Tests / approvals	
EMC	EN 50295

AS-i classification																															
AS-i master profile	M2; M3; M4																														
AS-i profile	S-7.F.F																														
AS-i I/O configuration [hex]	7																														
AS-i ID code [hex]	F.F																														
Data bits	<table border="1"> <thead> <tr> <th>Data bit</th> <th>D0</th> <th>D1</th> <th>D2</th> <th>D3</th> </tr> </thead> <tbody> <tr> <td>bidirectional</td> <td>I-1 / O-1</td> <td>I-2 / O-2</td> <td>I-3 / O-3</td> <td>I-4 / O-4</td> </tr> </tbody> </table>	Data bit	D0	D1	D2	D3	bidirectional	I-1 / O-1	I-2 / O-2	I-3 / O-3	I-4 / O-4																				
Data bit	D0	D1	D2	D3																											
bidirectional	I-1 / O-1	I-2 / O-2	I-3 / O-3	I-4 / O-4																											
Parameter bits	<table border="1"> <thead> <tr> <th>Parameter bit</th> <th>Function</th> <th></th> <th></th> <th></th> <th></th> </tr> </thead> <tbody> <tr> <td>P0</td> <td>watchdog for all outputs</td> <td>:</td> <td>activated</td> <td>* /</td> <td>disabled</td> </tr> <tr> <td>P1</td> <td>not used</td> <td></td> <td></td> <td></td> <td></td> </tr> <tr> <td>P2</td> <td>not used</td> <td></td> <td></td> <td></td> <td></td> </tr> <tr> <td>P3</td> <td>not used</td> <td></td> <td></td> <td></td> <td></td> </tr> </tbody> </table>	Parameter bit	Function					P0	watchdog for all outputs	:	activated	* /	disabled	P1	not used					P2	not used					P3	not used				
Parameter bit	Function																														
P0	watchdog for all outputs	:	activated	* /	disabled																										
P1	not used																														
P2	not used																														
P3	not used																														

Mechanical data	
Weight [g]	317
Type of mounting	AS-i interface to FC-E or SC lower parts
Material	PA 6-GF30; stainless steel (1.4305 / 303)

Displays / operating elements		
Display	Power	LED, green
	Function	LED, yellow

Electrical connection	
Module connection	Flat cable

Remarks	
Remarks	Inputs and outputs must be electrically isolated.
Pack quantity	1 pcs.

**Electrical connection**  
 cage clamps:  
 contact pins to module lower part, FK-E / PG: