

**EXPLORE**<sup>®</sup>  
SCIENTIFIC

***iEXOS100 AZIMUTH  
ADJUSTER ADAPTER***  
INSTRUCTION MANUAL



**COMPATIBLE WITH**



***iEXOS-100  
TRIPOD***



***TWILIGHT  
MEDIUM TRIPOD***



***TWILIGHT  
HEAVY TRIPOD***

## PARTS

(INCLUDED)



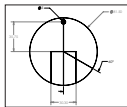
(1) Azimuth Adjuster Adapter



(1) Large Self-Center Knob  
*Twilight Medium or Heavy Tripods*



(1) Small Self-Center Knob  
*iEXOS100 Tripod*



(1) Drill Template



(2) Large Azimuth Adjusting Screws



(3) Set Screws



(1) Spacer



(1) 3mm L wrench



(1) AZ Pin



(1) M4 Screw



(1) Lock Washer



(1) Flat Washer

## TOOLS NEEDED

(NOT INCLUDED)



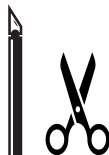
Power Drill



1/8-inch Drill bit



3/16-inch (5mm) Drill bit



X-acto<sup>®</sup> Knife or Scissors

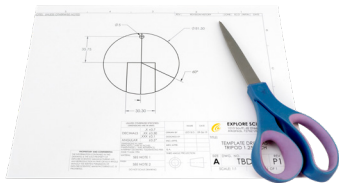
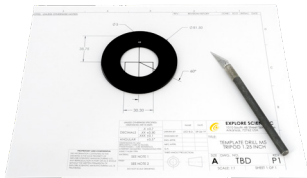
## INSTALLATION FOR ORIGINAL iEXOS-100 TRIPOD

See *page 6* for *Twilight Medium and Heavy Tripod Installation*

1. Remove the plastic ring from the top of the tripod by loosening and removing the Phillips screw.



2. Using the plastic ring as a guide, cut the drill template pattern with an X-acto<sup>®</sup> Knife (preferred) or scissors.



Visit [www.explorescientific.com/AZTemplate](http://www.explorescientific.com/AZTemplate) to print drill template

## INSTALLATION

**3.** Align the template on the tripod using the North Pole leg edges and the side set screw. The lines that form a box will align with the North Pole leg.

The diagonal line that clips the side of that box will point to the set screw position. When the template is properly aligned, tape it down.



**4.** Using the 1/8-inch drill bit, make a pilot hole in the position indicated on the template. The pilot hole should be directly across from the North Pole leg.



**5.** Remove the template and use the 3/16-inch or 5mm Drill Bit to enlarge the hole to the finish size.



## INSTALLATION

6. Place the AZ Pin into the hole and secure it from below using the provided M4 screw, lock washer, and flat washer.

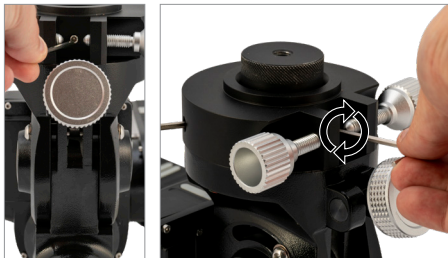


7. Attach the Azimuth Adjuster Adapter to your iEXOS 100 mount by centering the adapter 180 degrees from the iEXOS 100 serial number on the front of the mount. Secure it by screwing in the Small Self Center Knob all the way — making sure it is hand tight. Partially thread in the Large Silver Azimuth Adjusting Screws.



## INSTALLATION

**8.** Use the 3mm L wrench to tighten the three set screws that are located 120 degrees apart.



**9.** Place the iEXOS 100 mount and Azimuth Adjuster Adapter assembly on the tripod head by centering the AZ pin on the tripod head between the two Large Silver Azimuth Adjusting Screws. Immediately secure the mount by screwing in the tripod knob to the azimuth self center knob.



**10.** Congratulations! You are now ready to polar align your mount with the Azimuth Adjustment Adapter by adjusting the two azimuth adjusting screws in relation to the AZ pin.

## INSTALLATION FOR TWILIGHT HEAVY & MEDIUM TRIPODS

1. Remove E/C clip from t-bar.



2. Add included spacer on top of the existing spacer on t-bar and install the assembly back in the tripod using the E/C clip.



## INSTALLATION

**3.** Center Azimuth adjuster adapter with the iExos-100 serial number in front of the mount.



**4.** Use the self-center knob, screw it in all the way and make sure it is hand tight.





## INSTALLATION

5. Used the included 3mm wrench to tighten all 3 set screws located 120 degrees apart.



6. Screw in and secure the T-Bar screw to the azimuth self-center knob. Mount iEXOS-100 polar latitude adjustable base with the azimuth-adjusting screws approximately half way to tripod head by aligning the two knobs with the tripod nose.



## INSTALLATION

7. Use the spreader bar knob to secure the spreader bar to the tripod's legs.



## INSTALLATION

8. The mount is ready to polar align using the azimuth adjuster adapter.





**For detailed instructions on how to  
polar align an equatorial mount, visit:  
[explorescientific.com/polaraligning](https://explorescientific.com/polaraligning)**

**EXPLORE<sup>®</sup>**  
SCIENTIFIC

[explorescientific.com](https://explorescientific.com)