



ESCO EQUIPMENT SUPPLY COMPANY

Instruction Manual

Pneu-Tek Impact Driven Bead Breaker

Model #20429





ESCO EQUIPMENT SUPPLY COMPANY

CAUTION:

READ AND FOLLOW ALL WARNINGS, CAUTIONS AND INSTRUCTIONS ASSOCIATED WITH THE PROPER USE OF THIS PRODUCT, FAILURE TO COMPLY COULD RESULT IN DEATH, BODILY INJURY AND/OR DAMAGE TO EQUIPMENT.

This product as well as all tire tools, should never be used by persons unless they have been trained properly according to the O.S.H.A. regulation #29CFR 1910.177 entitled "Servicing Single-Piece & Multi-piece Rim Wheels". Copies of this regulation can be obtained by contracting this manufacturer. 800-352-9852 or sales.esco.net.

Instructions

1. Choose either an air impact or air ratchet. An air ratchet is preferred for hard to reach areas.



Air Impact vs. Air Ratchet

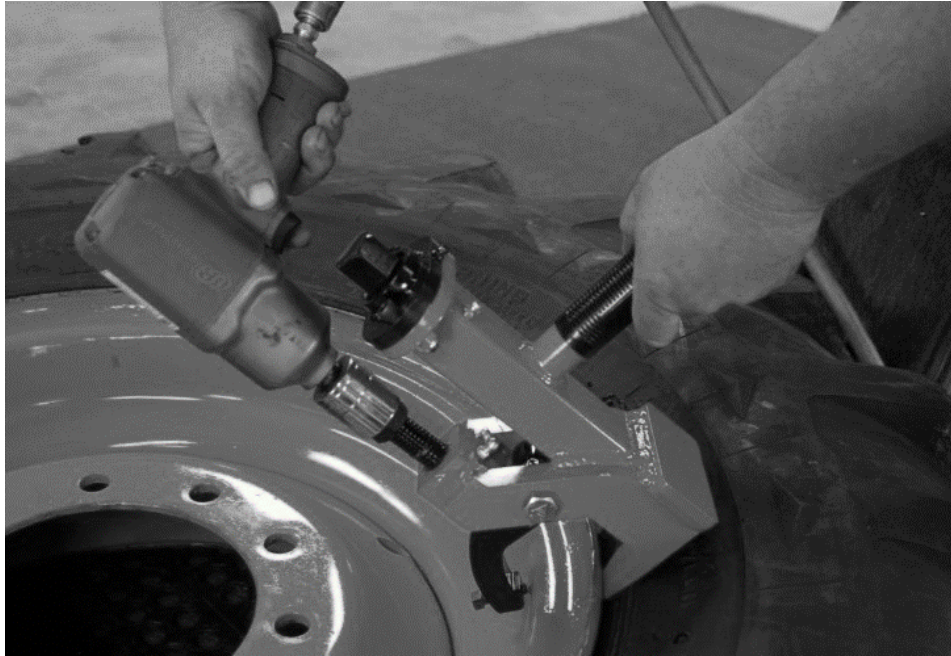
If using a high torque air impact, set the gun to a lower setting.





ESCO EQUIPMENT SUPPLY COMPANY

- 2. Insert the Impact tool counter-clockwise onto the grapple hook drive bolt and begin to Impact the tool into position, use the handle to guide the wedged feet between the rim edge and tire bead.**



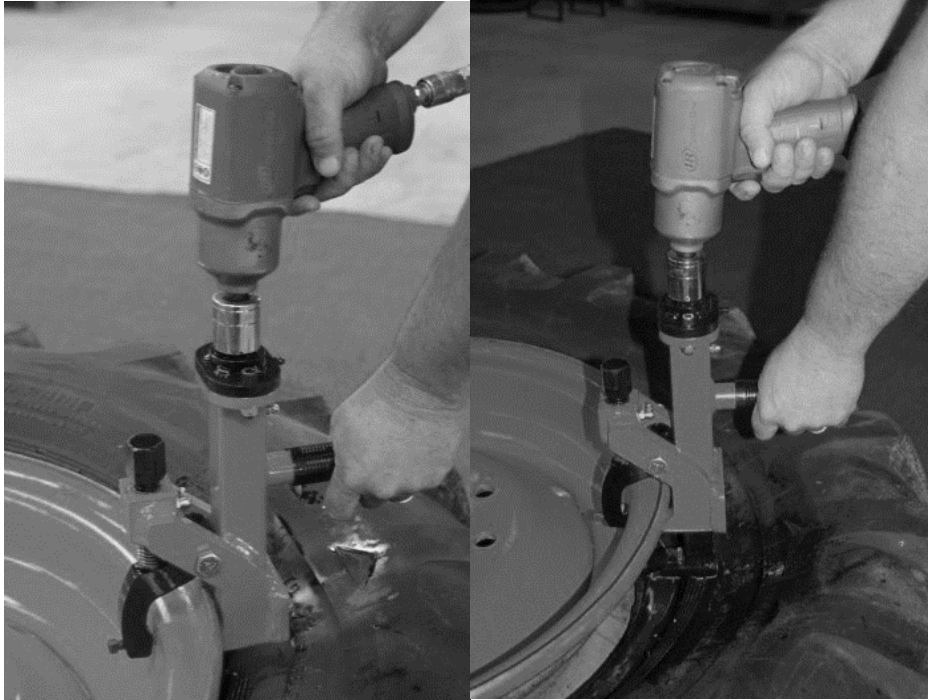
- 3. Impact the drive bolt until the tool is in an upright position and the wedge feet are secured between the bead and rim.**



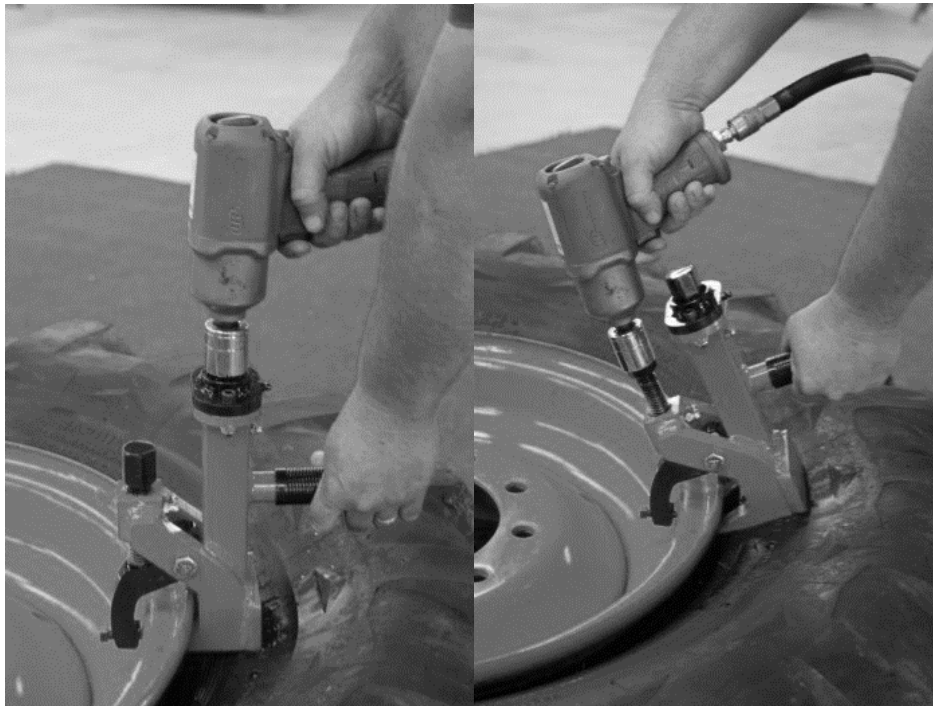


ESCO EQUIPMENT SUPPLY COMPANY

- 4. Impact the wedge foot drive bolt counter-clockwise until it strips the tire bead free of the rim.**



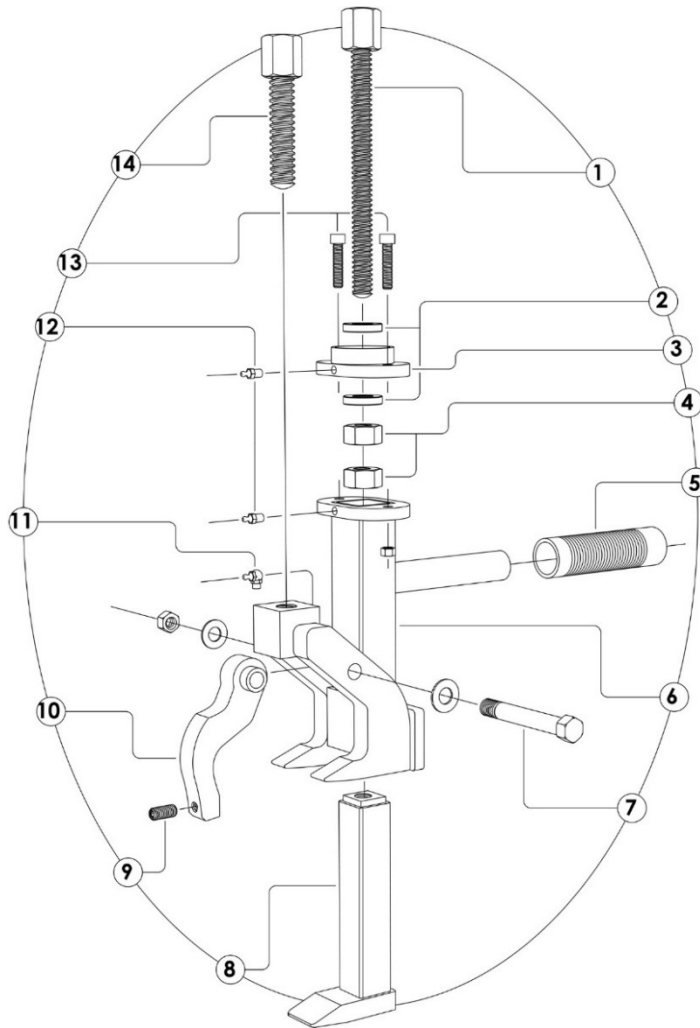
- 5. Retract foot by reversing impact on wedge foot, then retract grapple hook by reversing drive bolt, finally, remove tool from rim.**





ESCO EQUIPMENT SUPPLY COMPANY

Parts Breakdown & Parts List



Part #	Description	Part #	Description
1*	Main Drive Bolt. [Part of Kit 20429-2]	8	Bead Pusher
2*	Thrust Washers (x2) [Part of Kit 20429-2]	9	3/8" set screw
3*	Top Mounting Flange for Drive Assembly [Part of Kit 20429-2]	10	Grappling Hook
4*	Locking Nuts (x2) [Part of Kit 20429-2]	11	Right Angle Grease Fitting
5	Plastic Handle	12	Strait Grease Fitting (x2)
6	Main Housing Weldment	13	Flange Mounting Bolt Assembly (x2 5/16" bolts; x2 5/16 locking nuts)
7	Pivot Bolt Assembly (x1 1/2 in. Bolt; x2 1/2 in. Flat Washers; x1 1/2 in. Locking Nut)	14	Secondary Drive Bolt for Grappling Hook

***NOTE:** Numbers 1-4 make up the Drive Assembly **KIT 20429-2** (this is assembled separate of the main body of the tool prior to its being attached.) Part #'s 1-4 are NOT available separately and ONLY come assembled in **KIT 20429-2**.

