
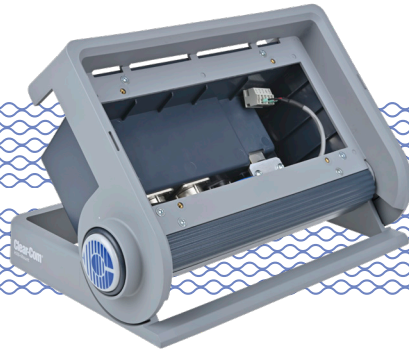


# HelixNet Speaker Station Enclosure

Digital Partyline Solutions



Linking  
People  
Together



HelixNet Speaker Station Enclosure (HXII-MOUNT)

## Key Features and Benefits

- Flexible enclosure for Speaker Station
- Desktop with multiple angles
- Portable and semi-permanent installations
- Various connectivity options

HelixNet<sup>®</sup> is a networked partyline intercom with up to 24 channels and Program Audio over XLR, LAN or WAN.

## Description

The HelixNet Speaker Station Enclosure (HXII-MOUNT, S-MOUNT)\* is a desktop or surface mounting enclosure for the HelixNet Speaker Station\*\* with adjustable angles for a wide variety of deployment.

## Universal Enclosure

Intended for portable and semi-permanent installations, the speaker station enclosure features raised sides to protect the knobs of the speaker station from damage. Speaker station mounts can be carried face-to-face if needed due to keyed lugs for easy stacking. Anti-slip feet help prevent movement when using the speaker station enclosure on a desktop. For temporary setups, the screw holes provided on the speaker station enclosure allow simple and quick surface mounting.

The HelixNet Speaker Station enclosure provides the speaker station's network connection to the Arcadia<sup>®</sup> Central Station or HelixNet HMS-4X main station using a HLI-ET2 Ethernet module. Power can be supplied to the speaker station in an enclosure locally with a supplied power supply or Power over Ethernet (PoE) from 3rd party devices.

Alternatively, a speaker station in an enclosure can connect via XLR Powerline with power to the Arcadia Central Station via HXII-DPL Powerline Device or to HelixNet HMS-4X main stations.

\*HXII-MOUNT & S-MOUNT are form, fit, and functionally equivalent, only differing in material and construction.

\*\*HelixNet speaker station sold separately

# HelixNet Speaker Station Enclosure

Digital Partyline Solutions

## Technical Specifications

### Connectors

XLR Powerline: 3-pin XLR-M/F  
DC Power: 3-pin KPJX-PM-3-S  
Ethernet/PoE: RJ45

### Power

AC Adapter Wall (included):  
Input Voltage Range: 100 - 240V AC  
Input Frequency Range: 50 - 60Hz  
Input Power Connector: Universal  
Output Voltage: 48V DC  
Output Power (Max): 15W  
Output Power Connector: KPPX-3-P

### Environmental

32° - +104°F (0° - +40°C)  
90% relative humidity

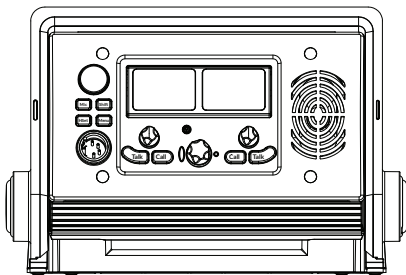
### Dimensions

**Minimum (Closed):**  
3.9 x 10.4 x 6.7 in. (HxWxD)  
(99 x 265 x 170 mm)

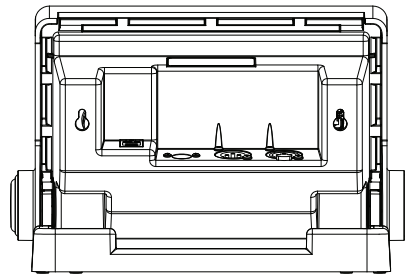
**Maximum (Open):**  
6.9 x 10.4 x 6.7 in. (HxWxD)  
(175 x 265 x 170 mm)

### Weight

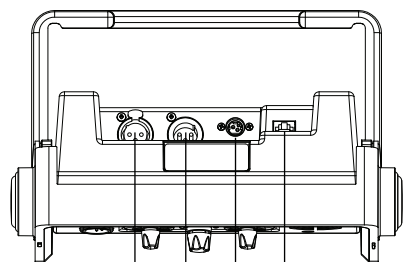
**HXII-MOUNT:** 1.9lbs (0.86kg)  
**S-MOUNT:** 2.8lbs (1.2kg)



Front View

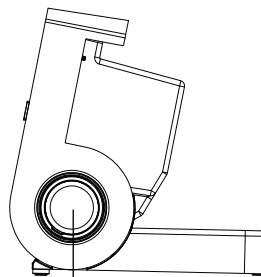


Rear View



Top View

1 2 3 4



Side View

1

## Legend

### Front

1. 3-pin XLR-F connector
2. 3-pin XLR-M connector
3. DC power connector
4. Ethernet connector

### Side

1. Angle adjust button (both sides)

## Order Code

**HXII-MOUNT / S-MOUNT (includes):**  
(4) 6/32 x 1/2" mounting screws (280038Z)  
(4) Screw cover (416G054)  
(4) Rubber feet (111G032)  
(1) Wall adapter PSU 15W 48V DC (453G025)

**Optional Accessories (sold separately):**  
Plug-In PSU 15W 48V DC (453G026)

