


EHX Configuration Software

Eclipse HX Digital Matrix Solutions



Linking
People
Together

Key Features and Benefits

- Online and offline configuration changes
- Non-intrusive configuration downloads allow system changes without disruption
- Client/Server operation enables multiple administrators to configure the system
- Central configuration of a single Eclipse HX matrix or a complete network of intelligently linked Eclipse HX matrices
- 4 levels of secure system management access: Guest, User, Local, Admin
- Logic Programming for conditional changes to intercom operation
- Remote monitoring supervision of intercom panels and FreeSpeak beltpacks
- System health monitoring and diagnostic logging, live telemetry display from FreeSpeak beltpacks and transceivers
- Secure access for IP connected Agent-IC and Station-IC mobile clients
- Integrated with Dynam-EC for online assignment
- Configuration of multi-function operator panels with multiple shift pages, interlocked keys, Reply keys, etc.
- N+1 card redundancy on E-IPA cards to back up primary cards in a frame
- LAN connection network redundancy
- Layer 3 (Network) support for connectivity with AES67 endpoints
- Roles-Based Session Workflow
- Support for NMOS IS-04 and IS-05
- 200 beltpacks on an Eclipse frame

EHX™ configuration software provides administrators and operators with an easy and intuitive means to configure an entire Eclipse® HX network.

Configuring Eclipse HX Systems with EHX Software

The Windows-based EHX configuration software configures and controls the operation of one or more Eclipse HX matrices. EHX can both download and upload system configurations to a target Eclipse HX matrix for either offline editing or live changes.

System Configurations

Up to four complete system configurations can be stored in the CPU card of the Eclipse HX-Delta Lite, -Delta, -Median, or -Omega frames. These configurations can be retrieved and activated on the matrix when required.

The Windows PC that hosts the EHX application stores complete system configurations for both offline editing and for download to the matrix. Storage of system configurations is only limited by the amount of available memory space on the PC. You can download the configurations to the matrix as required.

When running EHX on Windows operating systems, the client and server can run on separate machines connected over a network. You can use EHX to perform a wide range of configuration tasks, including:

- Assigning labels (names) to ports and user panels
- Creating point-to-point and fixed group (partyline) communications between connected audio devices
- Enabling, limiting or disabling features of any connected user panel or card
- Configuring connections between matrices

Current Version

EHX 13.1 will include NMOS (Networked Media Open Specification) IS-04 and IS-05. IS-04 handles the Discovery and Registration of devices on a network, while IS-05 handles the device connection and management.

This release also has the addition of Roles Session Workflow. Roles Workflow allows audio engineers to configure specific keys on multiple devices for an individual. Regardless of the device the individual logs in on, the respective configuration for that individual is loaded into the device. This feature provides a scaled flexibility for both the engineer and the individual user.

Technical Specifications

Recommended PC Requirements for Hosting EHX

Operating Systems

Windows 10
Windows Server 2019
Windows Server 2016

Memory

8GB for standard systems
16GB for large networked systems, servers, and heavily used Dynam-EC™ clients

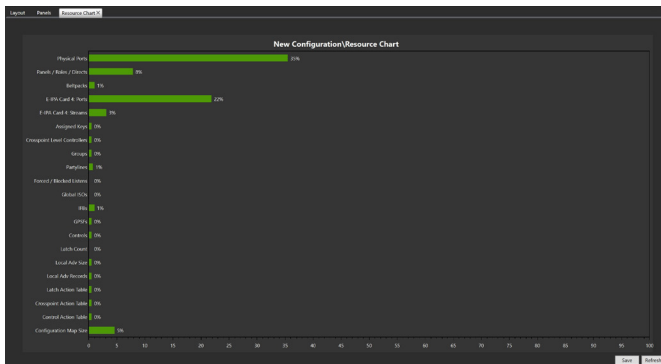
CPU

Intel i7 10th generation or equivalent

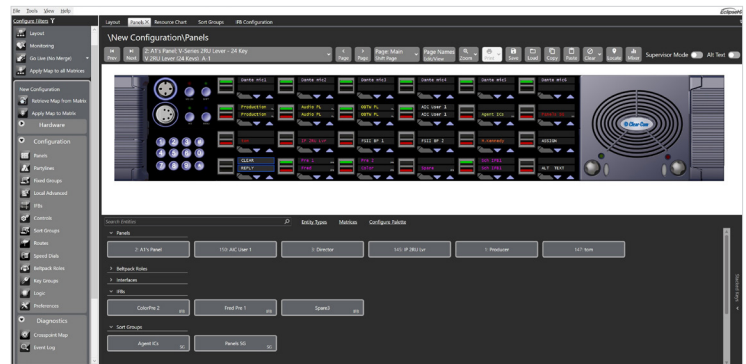
GPU

Dedicated GPU for large network systems

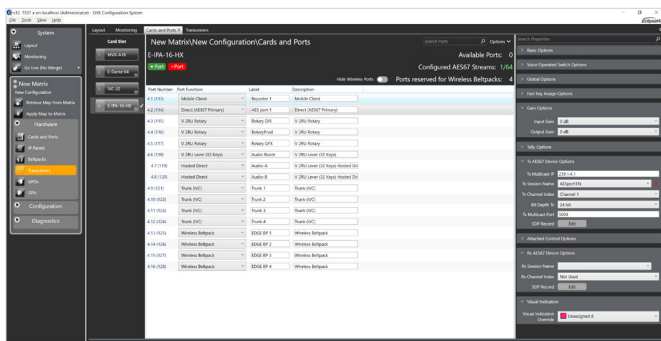
EHX Configuration Software



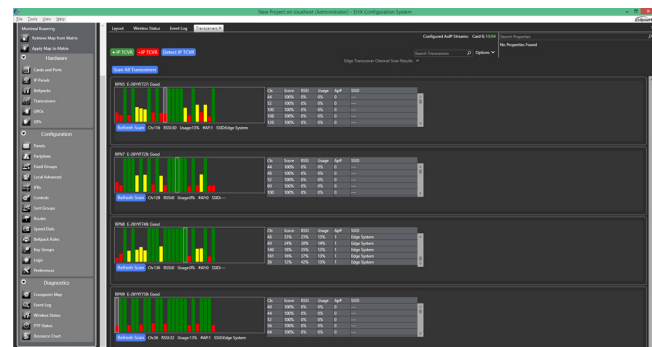
Resources



Panels



Cards and Ports



5 GHz RF Scanning