

Video Distribution Amplifier Card

Bittree® DABX Video Distribution Amplifier Card (DA)
For use with DAF32X Video Distribution Frame
(sold separately)

DABX Video Distribution Amplifier Card (DA)

Technical Specifications:

- 1 in x 4 out
- Coax in and out
- Auto equalizing
- Multi-rate reclocking up to 12Gb/s
- Supports all HD/SD formats
- Supports AES & Madi

Input

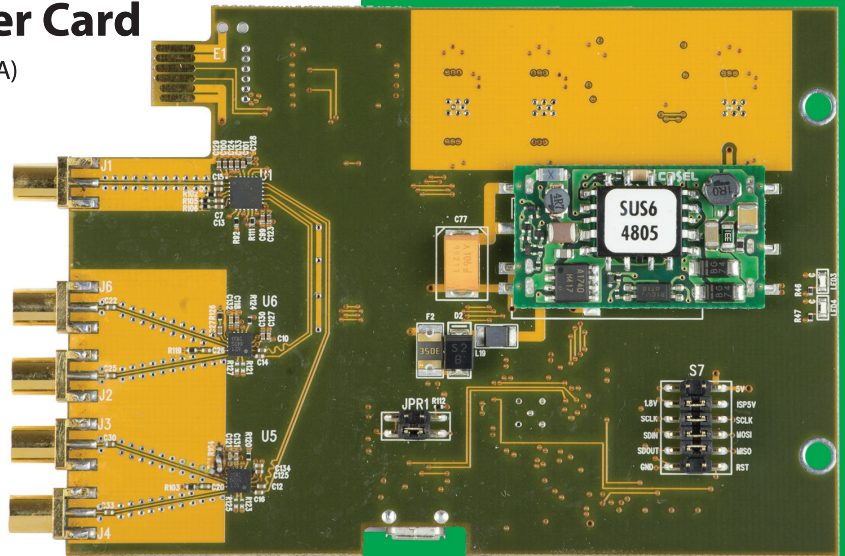
- Number of Inputs 1
- Input Connection DIN 1.0/2.3
- Input Impedance 75 Ohm
- Input Return Loss
 - > 15dB to 1.5GHz > 10dB to 3GHz > 5dB to 12GHz
- Signal Level 800mV +/-10%

Output

- Outputs 4 Coax
- Output Connection Din
- Output Impedance 75 Ohm
- Output Return Loss
 - > 15dB to 1.5GHz > 10dB to 3GHz > 5dB to 12GHz

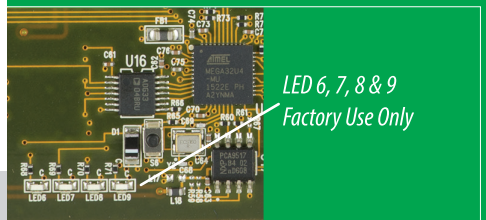
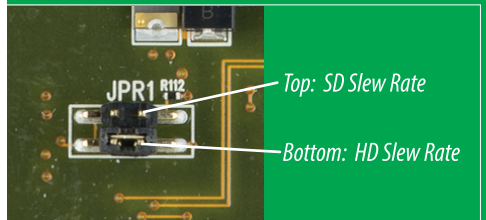
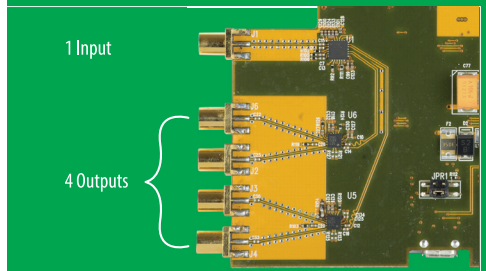
Performance Standards

- SMPTE 424M, 292M, 259M, 344M, ST2081, ST2082
- Data Rates 143, 177, 270, 360, 540, 1485, 2970, 5940, 11880 Mb/s
- Max Cable Length @ 11.88 GHz
 - Belden 4855R 149FT / 45M
 - Belden 4505R 208FT / 63M
- Equalization Mode Automatic Multi-Rate Re-clocking
- Signal Level 800mV Nominal
- DC Offset 0V +/-0.5V
- Rise & Fall Time 200ps nominal
- Overshoot < 10% of amplitude Wideband Jitter < 0.1 UI @ 3G
- Rise & Fall Time 200ps nominal
- Overshoot < 10% of amplitude
- Wideband Jitter < 0.1 UI @ 3G



Red: ON=Signal Loss

Blue: ON=Signal Lock



About Bittree:

Established in 1978, Bittree is dedicated to offering state-of-the-art patchbays and patch panels that streamline signal routing and troubleshooting in media and entertainment operations of all sizes.

The company offers an innovative line of audio, video, and data patchbays for use in broadcasting, postproduction, and pro A/V operations. Tailored for use in the post-production, pro A/V, systems integration, and radio and television broadcasting fields, Bittree's patching solutions are rigorously tested to ensure long-term functionality and dependability, especially for mission-critical operations and live events. To ensure consistency, performance, and adherence to rigid quality standards, all of the company's patching products are designed, assembled, and tested in its state-of-the-art facility in Glendale, California. Bittree is an active member of industry trade organizations NAB (National Association of Broadcasters), NAMM (National Association of Music Merchants), and SMPTE (Society of Motion Picture & Television Engineers). For more information, please visit www.bittree.com.



Bittree, Inc.
600 W Elk Ave,
Glendale, CA
91204 USA



Bittree.com