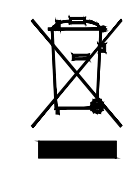


RoHS  
COMPLIANT



PATCHING SYSTEMS

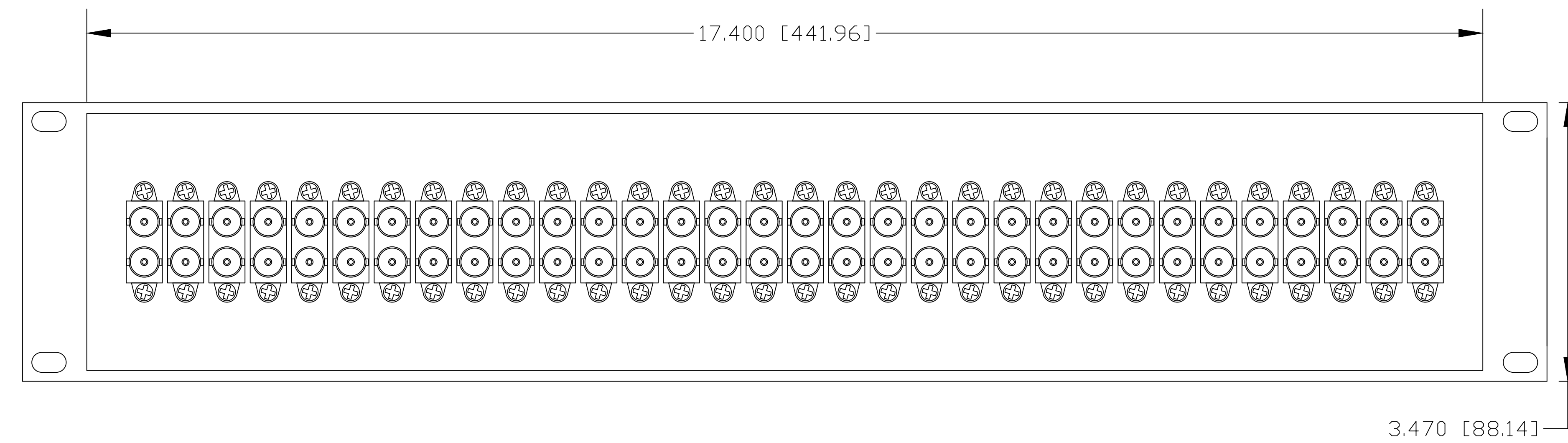
AUDIO, VIDEO, SERIAL DATA

600 WEST ELK AVENUE  
GLENDALE, CA. 91204

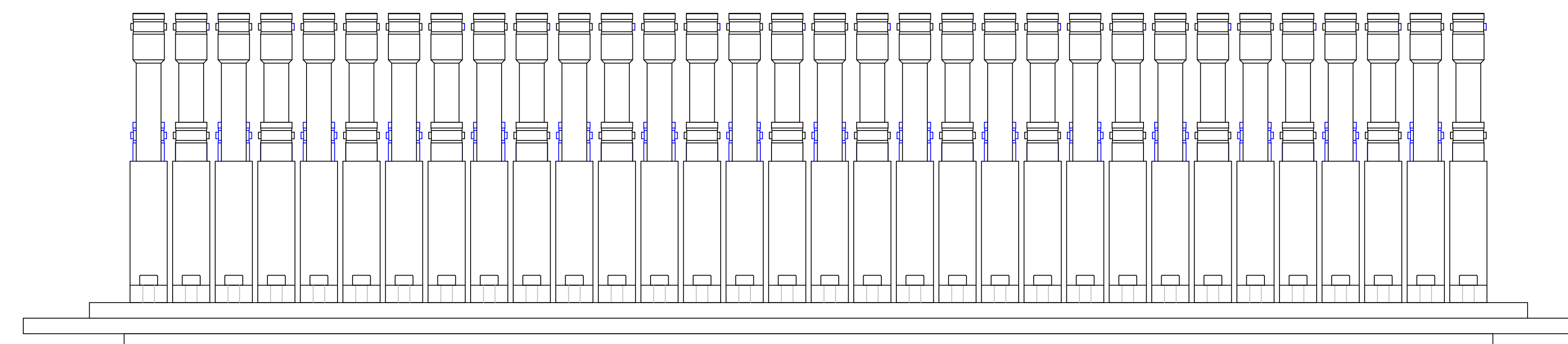
TEL 818 500-8142

FAX 818 500-7062

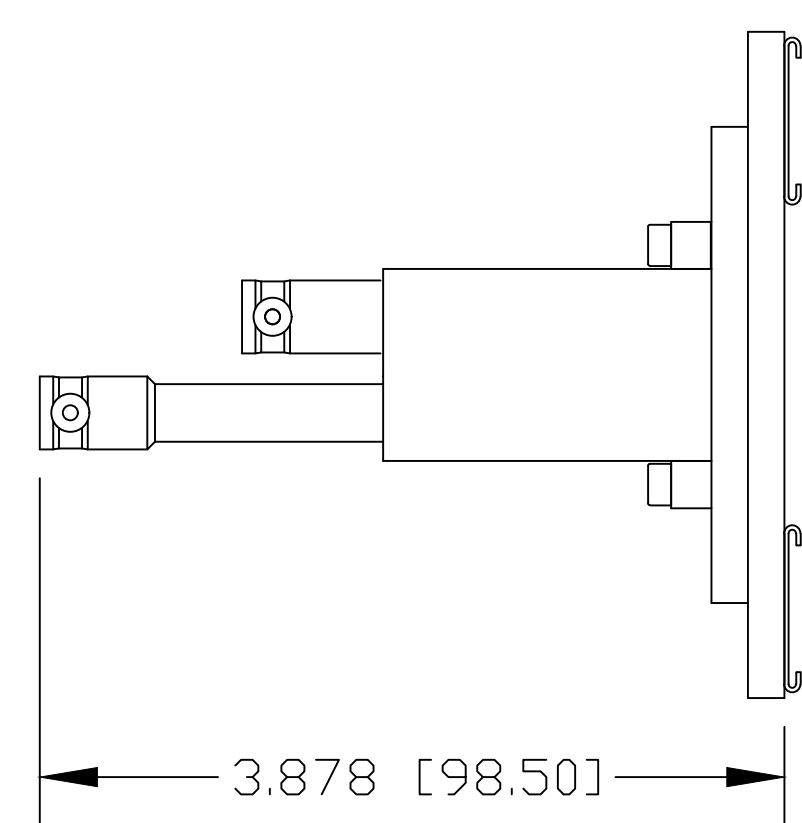
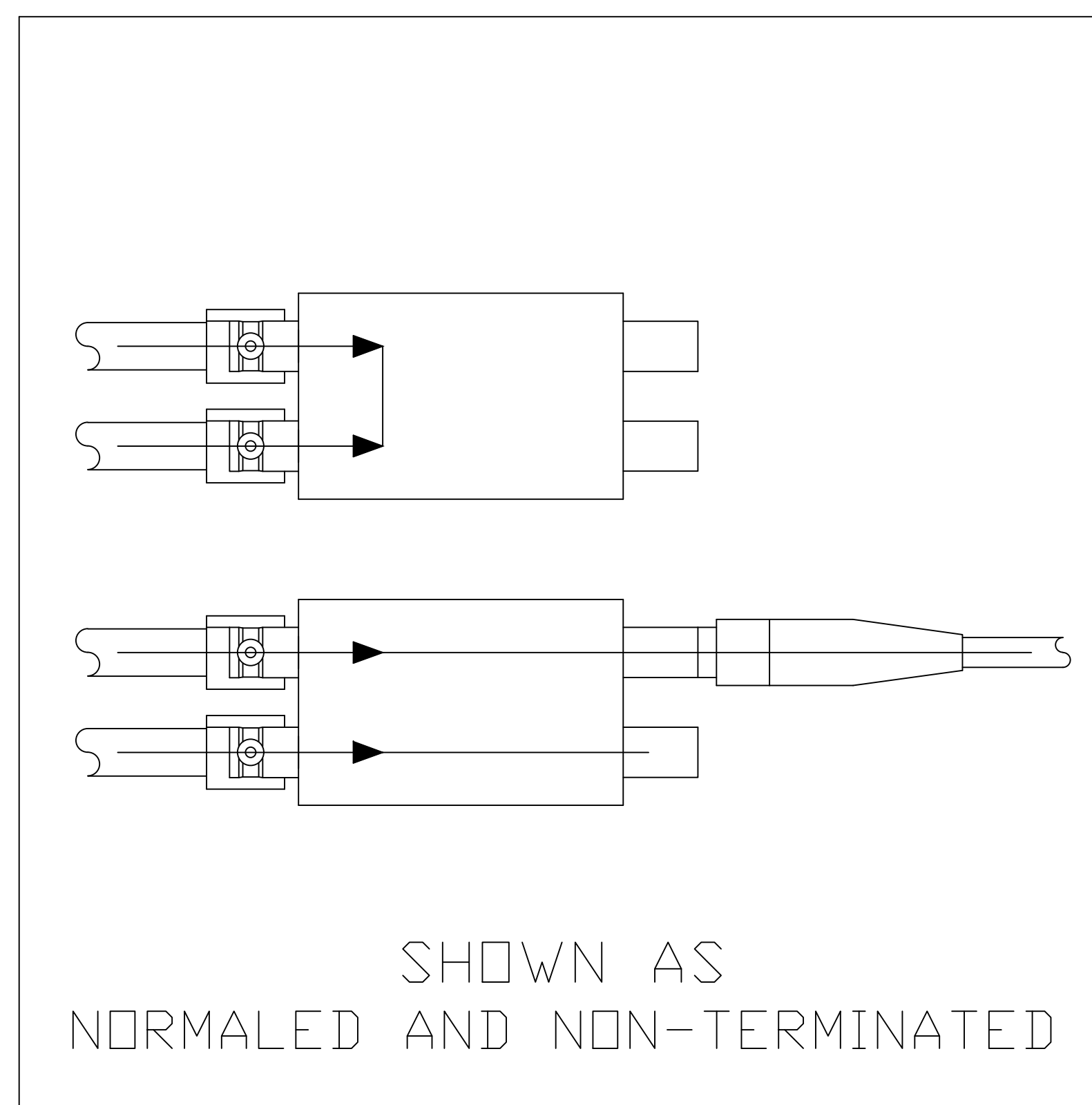
WWW.BITTREE.COM



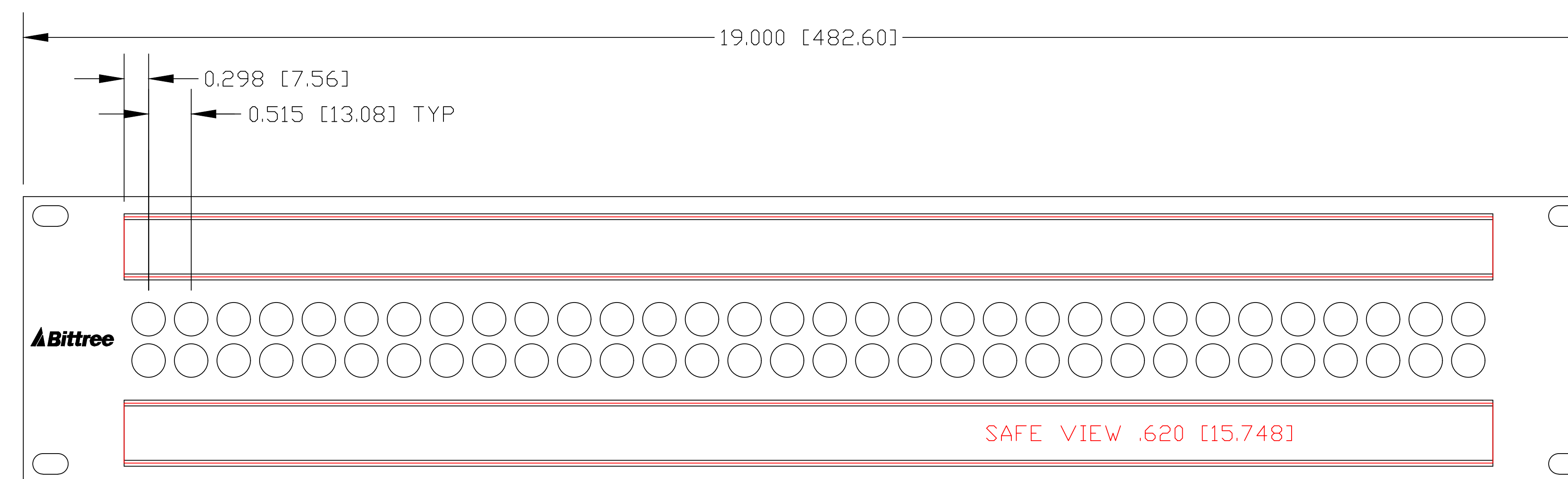
REAR VIEW



TOP VIEW



SIDE VIEW



FRONT VIEW

DESIGNATION HOLDER: DS870-10/S, .870 [22.098]x16.56 [420.624] Stainless Steel  
 CLEAR LEXAN INSERT: DS870-10/P, .725 [18.415]x16.56 [420.624]  
 PAPER INSERTS: DS870-10/D, .725 [18.415]x16.56 [420.624]

NOTE: Ds\_insert Layer is a scaled 1:1 label insert outline

DATA CONTAINED IN THIS DOCUMENT  
 IS PROPRIETARY AND SHALL NOT BE  
 DISCLOSED, COPIED OR USED FOR  
 PROCUREMENT OR MANUFACTURE  
 WITHOUT EXPRESS WRITTEN PERMISSION  
 OF BITTREE INCORPORATED

DWG. NO.: 64T2MWNHDRE.DWG

PART NO.: B64T2MWNHD

DESIGNATION: DS800-10

LAYER (DS\_INSERT) IS PROVIDED  
 FOR THE CREATION OF LEGEND  
 STRIPS FOR THIS PATCHBAY. THE  
 RED OUTLINE MATCHES THE SIZE  
 OF INSERT.  
 PLEASE NOTE THE VIEWABLE AREA  
 IS LISTED IN NOTES BELOW THE  
 FRONT PANEL VIEW.

DWG. SCALE: FULL

PDF. SCALE: NONE

ALL POSSIBLE CARE HAS BEEN TAKEN IN  
 PREPARING THIS SET OF DRAWINGS.  
 STATEMENTS AND SPECIFICATIONS ARE  
 BELIEVED TRUE BUT CANNOT BE  
 GUARANTEED AND THEREFORE WE ARE  
 NOT RESPONSIBLE FOR ANY  
 INACCURACIES. THIS DOCUMENT SHOULD  
 BE USED AS THE BASIS FOR DESIGN OR  
 TO ESTABLISH SPECIFICATION LIMITS.

BITTREE RESERVES THE RIGHT TO  
 CHANGE OR ALTER SPECIFICATIONS OR  
 MATERIALS WITHOUT NOTICE. PROVIDED  
 THE FUNCTION AND PERFORMANCE OF  
 THE PRODUCT REMAINS REASONABLY  
 SIMILAR OR IS IMPROVED.

REV.:	DATE: 9/18/2017	BY: G.S.	CHANGES:
-------	-----------------	----------	----------