



Delayed Single Shot Relay Output

SPECIFICATIONS

TIMING RANGES

Virtually unlimited. See page 77 for standard ranges available.

OUTPUT RATING	DPDT, 10 A @ 250 VAC or 24 VDC, resistive; 211 VA @ 120 VAC, inductive
----------------------	---

TIMING	Minimum Setting +0 – 20%
TOLERANCES	Maximum Setting ±10%;

REPEATABILITY 1% maximum; no first cycle effect

RESET TIMES	Before Time Out	100 mSEC
	After Time Out	50 mSEC

RECYCLE TIME 40 mSEC

SUPPLY VOLTAGE 24 or 120 VAC or VDC, 50/60 Hz; ±10%

FALSE TRANSFER No

REVERSE POLARITY PROTECTED Yes

POWER CONSUMPTION 3 watts (approximately)

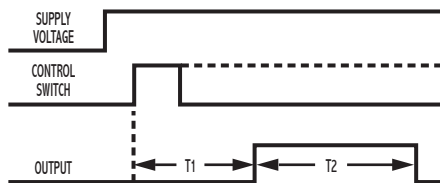
TEMPERATURE RATING	Operate	32° to 131°F (0° to +55°C)
	Storage	-49° to 185°F (-45° to +85°C)

LIFE EXPECTANCY	Mechanical	10 million operations (minimum)
	Electrical	100,000 operations @ rated load

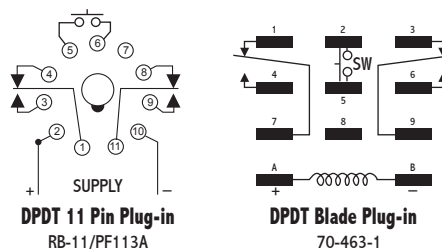
WEIGHT 6.4 oz.

OPERATION

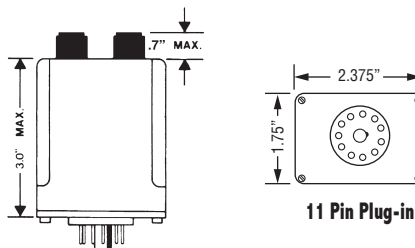
Voltage is continuously applied to the input. An external isolated switch controls the timer. When closed (momentary or maintained), the OFF time begins. Upon completion of the OFF time, the relay energizes and the ON time begins. Upon completion of the ON time, the relay de-energizes and the cycle is complete. Reset is accomplished by reclosing the control switch after the timing cycle has completed. The OFF/ON time periods are independently adjustable.



WIRING



DIMENSIONS (INCHES)



MODEL NUMBER

MODEL NUMBER	TDI		A			
SUPPLY VOLTAGE	24 VAC or DC	24				
	110/120 VAC or DC	120				
TYPE OF OPERATION	Knob Adjustable		K			
	Lock Nut Adjustable		L			
	Fixed		F			
ENCLOSURE STYLE	11-pin Round plug-in			A		
	Blade plug-in			B		
DELAY PERIOD	See page 82 for standard ranges available					

Example: TDI-120-ALA-300—Delayed single shot, 120 Volts AC or DC, lock nut adjustable from 3 to 300 seconds, 11-pin octal plug-in, UL Recognized.