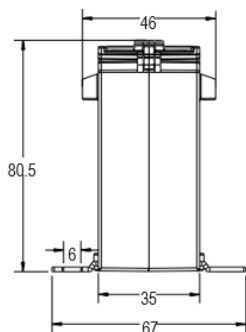
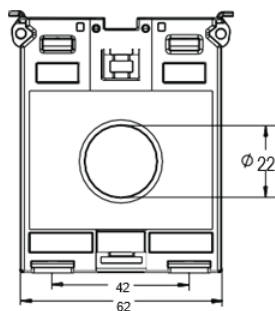


DIMENSIONS (MM)

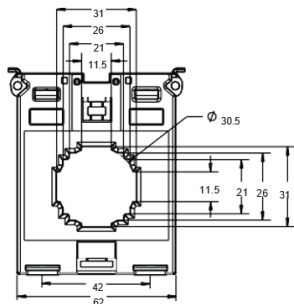
CT-30/5, 50/5, 100/5, 200/5



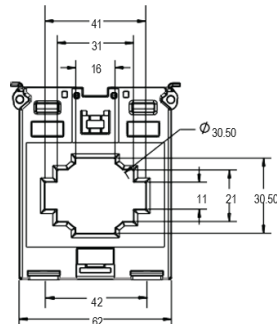
CT-30/5



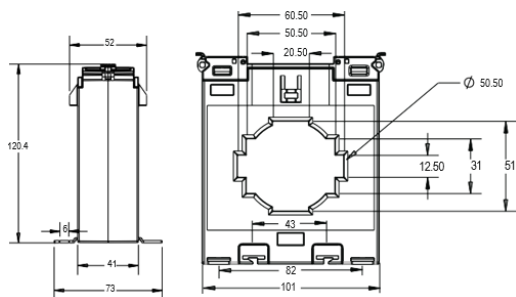
CT-50/5, 100/5



CT-200/5



CT-500/5, 1000/5



ORDERING INFORMATION

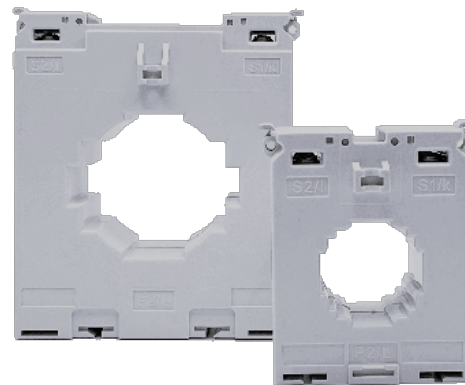
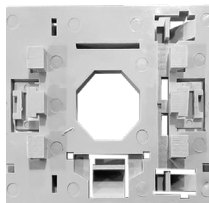
MODEL	CURRENT RATIO	BURDEN	ACCURACY CLASS
CT-30/5	30/5 A	1 VA	5
CT-50/5	50/5 A	1.5 VA	3
CT-100/5	100/5 A	3 VA	1
CT-200/5	200/5 A	2.5 VA	0.5
CT-500/5	500/5 A	5 VA	1
CT-1000/5	1000/5 A	15 VA	0.5

ACCESSORIES

DIN Rail Clamp

CTDRC

CTDRC - DIN Rail Clamp



Current Transformers

The **CT Current Transformers** are available in a wide range of bus bar sizes and a current measuring range of 30A to 1000A. The transformers are CE and UL cURus listed.

- Use with different bus bar
- Accuracy: Class 0.5 to 5
- 30/5 to 1000/5 Amperes
- Panel Mount/ DIN Rail Mount (Optional Accessory)

SPECIFICATIONS

INPUT/OUTPUT	Rated primary rating	30A to 1000A
	Rated secondary output	5A
TECHNICAL SPECIFICATIONS	Rated burden (VA)	1VA to 15VA
	Class of accuracy	0.5 to 5
	Thermal Nominal Continuous	120% of In Rated Current (I _{ch})
	Thermal short circuit current (I _{th})	I _{th} = 60 X I _n for 1 sec
	Instrument security factor	FS < 5
ENVIRONMENTAL SPECIFICATIONS	Insulation class	E (120°C max)
	Max operating voltage (U _m)	720V maximum
	Isolation test voltage	3kV AC 1 min
	Nominal rated frequency	AC 50Hz - 60Hz
MOUNTING	Mounting modes	Panel Mount / DIN rail Mount
	STANDARD	Applicable standard