

Outdoor Pump Station Alarm

Rated Type 4X, Outdoor Remote Alarm Panel

ALARM PANEL ONLY

ALDERON[™]
Industries

Leading Edge Control Products

TECHNICAL DATA SHEET

DESCRIPTION OF OPERATION



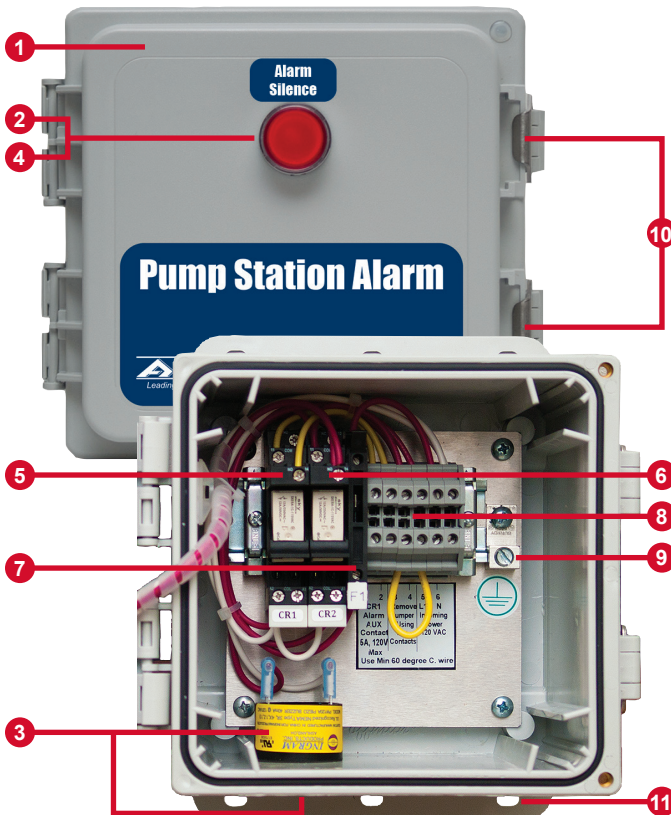
The Outdoor Remote Pump Station Alarm is an outdoor rated alarm panel and connected to either dry or 120VAC powered contacts from a pump station main control panel.

The Outdoor Remote Pump Station Alarm Panel is activated from the main control panels dry contacts (must be rated for 120VAC, 1 Amp minimum) or 120VAC powered alarm signal. Use the auxiliary contacts to connect to building automation systems (BAS) and phone dialers.

When a signal is received from the main control panel, the red LED alarm indicator will illuminate, buzzer will annunciate, and the auxiliary contacts will activate. If the alarm silence pushbutton is pressed during an alarm condition, it will silence the buzzer while the alarm indicator and auxiliary contacts remain activated.

The silence condition will reset when a signal from the main control panel deactivates, indicating the alarm condition has been cleared. The alarm indicator and auxiliary contacts deactivate, and the alarm panel will auto reset for the next alarm cycle.

STANDARD FEATURES



(1) **Enclosure** - Thermoplastic, rated Type 4X (outdoor).

(2) **Alarm Indicator** - The red LED alarm indicator will illuminate on the front of the alarm panel.

(3) **Alarm Buzzer** - The alarm buzzer will annunciate in addition to the visual indication provided by the red LED during an alarm condition.

(4) **Alarm Silence Pushbutton** - Press the pushbutton to silence the buzzer during an alarm condition. The alarm LED remains illuminated and auxiliary contacts activated until the alarm condition has been cleared.

(5) **Auxiliary Contacts Relay** - Wired to the terminal block on the alarm panel to control the auxiliary contacts signal received from the main control panel.

(6) **Alarm Silence Relay** - Wired to the terminal block on the alarm panel to control the audible indication during an alarm condition.

(7) **Fuse** - Included to protect internal wiring, fast acting type AGC, and rated at 1 Amp, 250VAC maximum.

(8) **Terminal Block** - Field installed wiring is connected to the terminal block on the alarm panel, labeled for easy installation. Terminals 1 and 2 are for the alarm auxiliary contacts, rated at 120VAC, 5 Amps maximum. Terminals 5 and 6 are for the incoming power (L1 and N), rated at 120VAC, 60 Hz.

(9) **Ground Lug** - Connect ground wires to the lug.

(10) **Lockable Latches** - Securely fasten the cover of the alarm panel enclosure using the latches. Each latch includes a slot to padlock the alarm panel from unwanted entry.

(11) **Mounting Feet** - Located on the top and bottom of the alarm panel enclosure to securely fasten in the desired location.

SPECIFICATIONS

Outdoor Remote Pump Station Alarm, Panel Only



Primary Power

120VAC from main control panel or separate power feed

Input Signal

Dry contacts, 120VAC, 1 Amp minimum
Wet contacts to 120VAC

Fuse

1 Amp, fast acting type AGC
250VAC maximum, 5mm x 20mm

Auxiliary Contacts

Normally Open (*dry contacts*)
120VAC, 5 Amps maximum

Alarm Indicator/Silence

120VAC, 22mm diameter, LED (*red*)

Alarm Buzzer

120VAC, 95 dB @ 2-feet

Enclosure

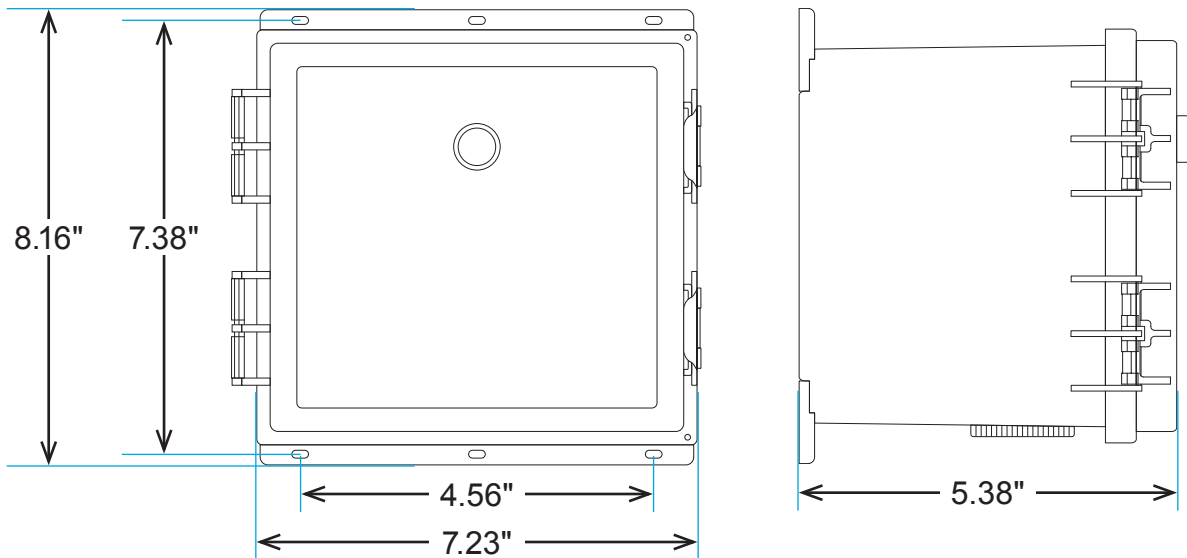
Thermoplastic
6 x 6 x 4 (*inches*)
Type 4X, Outdoor
Lockable Latches

Certifications

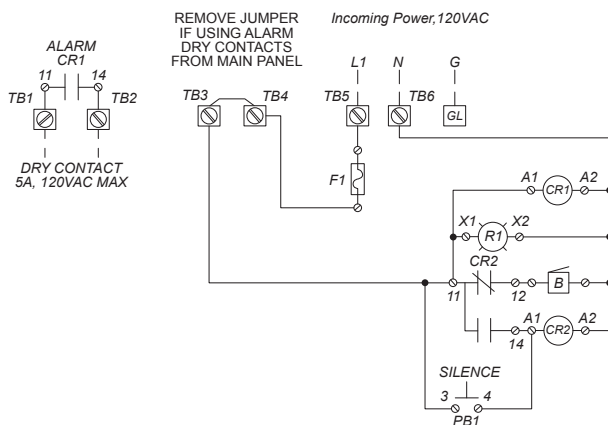
UL (*US and Canada*)

Three-Year Limited Warranty

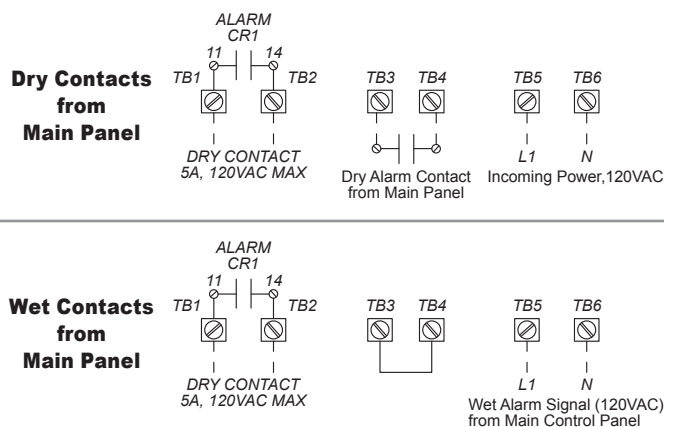
MECHANICAL DRAWING



SCHEMATIC DRAWING



FIELD WIRING EXAMPLES



ORDERING INFORMATION

For a complete list of standard products with pricing, refer to the current year price sheet or visit alderonind.com for more information.

PART NUMBER	DESCRIPTION (Alarm Panel includes: Auto Reset and Auxiliary Contacts)
8059	Outdoor Remote Pump Station Alarm, Type 4X (Alarm Panel Only)