

PVC Hub / Terminal Adapter



Leading Edge Control Products

Control Panel and Junction Box Accessory

PVC HUB ONLY (INCLUDES LOCKNUT)

TECHNICAL DATA SHEET

DESCRIPTION OF OPERATION



The PVC Hub / Terminal Adapter (male) is typically used with control panel and junction box enclosures to provide a conduit entrance for electrical wiring or cables required per application. Available models include PVC hub sizes from 1" to 2" with a threaded lock nut to securely fasten the terminal adapter.

Meets NEMA TC-3 Standards, UL and CSA Listed, and can be used with both Schedule 40 and Schedule 80 conduit for encased burial (EB) or direct burial (DB) applications. Seal all conduits to prevent moisture and gases from entering the enclosure per local codes.

The PVC hub can be used for a variety of indoor and outdoor applications since they are made from durable, non-conductive material that will not rust or corrode. The fittings consist of one solvent weld female end and one threaded male end, both ends will fit the same diameter conduit.

STANDARD FEATURES



(1) Hub / Terminal Adapter Material - Made from Polyvinyl Chloride (PVC), durable, non-conductive, and will not rust or corrode.

(2) Solvent Weld (Female End) - Accepts the same size diameter of conduit as the PVC hub/terminal adapter. Seal all conduits to prevent moisture and gases from entering the enclosure or junction box per local codes.

(3) Hub / Terminal Adapter Thread (Male End) - Threads to accept the lock nut and securely fasten the PVC hub/terminal adapter to the interior side wall of the enclosure or junction box.

(4) Lock Nut - Securely fastens the PVC hub/terminal adapter to the interior of the enclosure or junction box using the male end threads. Seal all conduits to prevent moisture and gases from entering the enclosure or junction box per local codes. Made from zinc plated steel.

SPECIFICATIONS

PVC Hub / Terminal Adapter | 1" to 2" Conduit Sizes



Hub / Terminal Adapter Material
Polyvinyl Chloride (PVC)

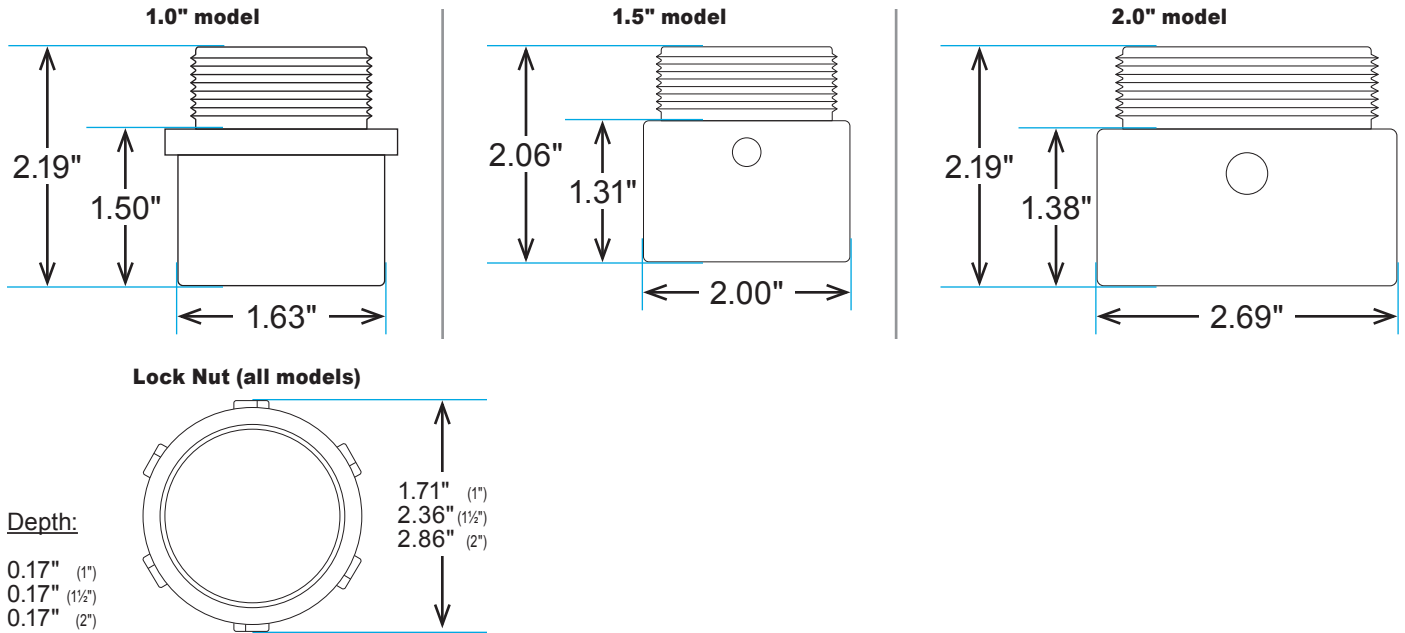
Hub / Terminal Adapter Sizes
1.0", fits 1-inch diameter conduit
1.5", fits 1½-inch diameter conduit
2.0", fits 2-inch diameter conduit

Certifications
UL and CSA Listed

Lock Nut Material
Zinc Plated Steel

Three-Year Limited Warranty

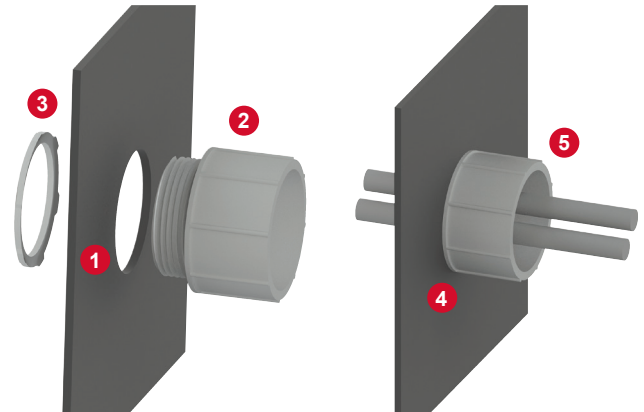
MECHANICAL DRAWING



INSTALLATION EXAMPLE

The installation example shown is a typical application for using a PVC hub/terminal adapter and lock nut with an enclosure or junction box. Note: Additional components may be required in addition to the PVC hub and lock nut for complete installation per local codes.

- 1) Determine mounting location and drill appropriate size hole.
- 2) Place PVC hub into hole, positioned with male end threads inward.
- 3) Fasten lock nut on PVC hub threads from interior of side wall.
- 4) Seal to prevent moisture and gases from entering enclosure or junction box per local codes.
- 5) Insert electrical wire(s) or cable(s) through the PVC hub and then add a rubber grommet, PVC conduit, or other attachment per local codes as required per application. Seal to prevent moisture and gases from entering enclosure or junction box per local codes.



ORDERING INFORMATION

For a complete list of standard products with pricing, refer to the current year price sheet or visit alderonind.com for more information.

PART NUMBER	DESCRIPTION
7107	1.0" PVC Hub
7108	1.5" PVC Hub
7109	2.0" PVC Hub