

Functional Series

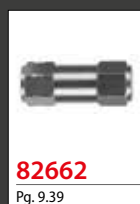
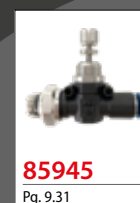
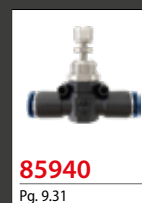


Functional Series

PTF-SAE- EXTRA SHORT



Flow Regulators - Quick Exhaust Valves - Slide Valves - Unidirectional Valves Or Non Return Valves Block Valves



FUNCTIONAL FITTINGS



Functional Series

FLOW CONTROL VALVES



TECHNICAL CHARACTERISTICS



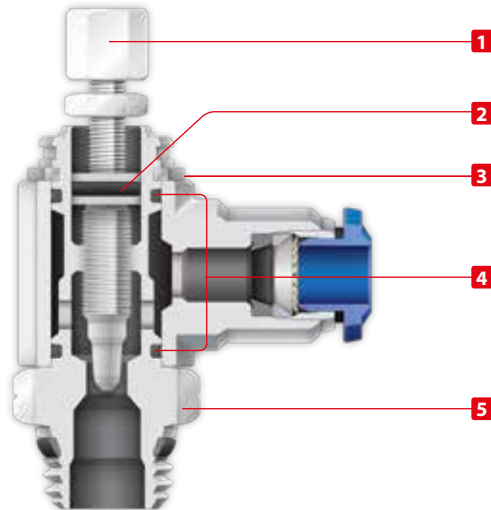
Reference Standard

1907/2006
REACH ✓

2011/65/CE
RoHS ✓

PED
2014/68/UE

ISO
14743:2004



Pressure Rating

Vacuum ~ 250 PSI
-0.99 bar ~ 20 bar
-0.099 MPa ~ 2.0 MPa



Temperatures Rating

NBR
-4° F ~ 176° F
-20° C ~ 80° C



Media

• Compressed Air



Component Parts and Materials

- 1 Nickel Plated Brass Adjustment Screw
- 2 NBR 70 O-Ring
- 3 303 Stainless Steel Shaft Clip
- 4 NBR 70 O-Ring
- 5 Nickel Plated Brass Body



Tubing Compatibility

Nylon 11
Nylon 12
Polyethylene
Polyurethane



Threads & Advantages



NPT
NPTF

ISO 7
BSPP

ISO 7
BSPT
PT

ISO 228
BSP
PF

Tapered

Parallell

Tapered

Parallell



Advantages

The **SWIFFFIT** Universal Thread has been designed to offer the following advantages to the end users:

- Reduced overall length
- Smaller hex dimensions compared to parallel threads
- Fits with various parallel and tapered threads

Our **SWIFFFIT** universal fittings also work on non-flat surfaces without compromising an air-tight seal.



PTF Thread



The PTF Thread has been designed to offer the following advantages to the end users:

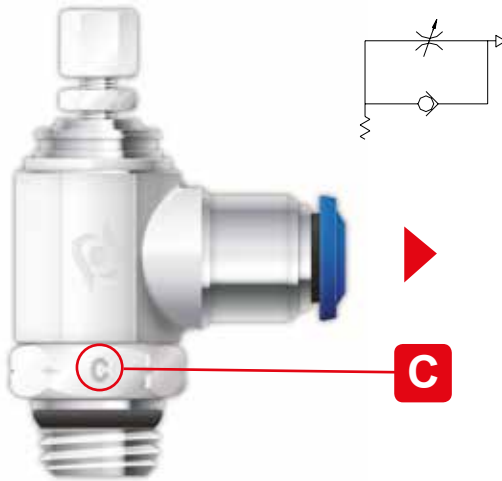
- Standard USA design. PTF/SAE extra short thread
- Designed for connections with an NPTF thread
- Dryseal pipe threads are designed for applications where clearance is not sufficient for the full thread length of NPTF threads.

Torque Specifications

Recommended Torque		
Thread Size	Min.	Breaking torque
1/8	5 Nm	8 Nm
1/4	9 Nm	30 Nm



CONTROLLED FLOW OUT

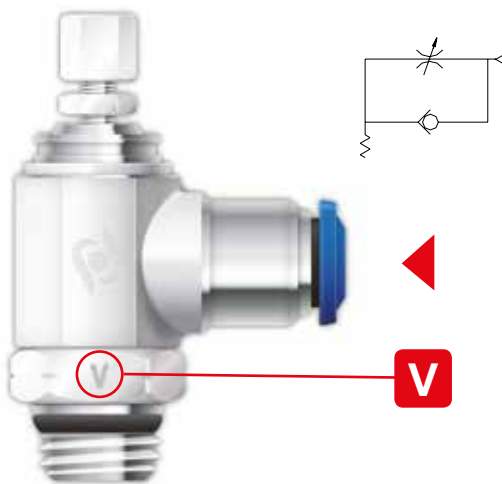


Part Number:

- 89953 - 89958 - 89903 - 89907
- 88953 - 88958 - 87903 - 87907
- 50901N - 50905N - 50903N - 50907N
- 85953 - 85958 - 85903 - 85907
- 55900 - 55905 - 55903 - 55907
- 88952 - 88957 - 82903 - 82907



CONTROLLED FLOW IN

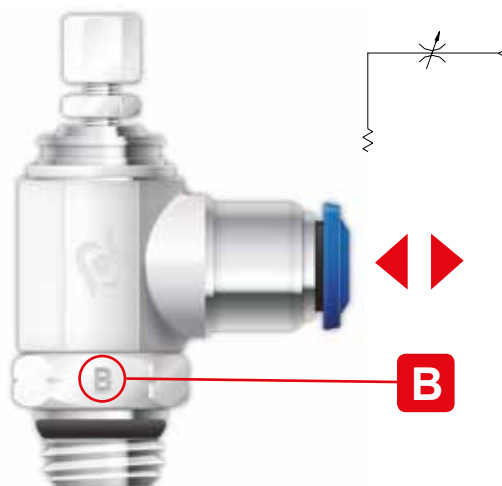


Part Number:

- 89963 - 89968 - 89913 - 89917
- 88963 - 88968 - 87913 - 87917
- 50910N - 50915N - 50913N - 50917N
- 85963 - 85968 - 85913 - 85917
- 55910 - 55915 - 55913 - 55917
- 88962 - 88967 - 82913 - 82917



BI-DIRECTIONAL FLOW



Part Number:

- 89973 - 89978 - 89923 - 89927
- 88973 - 88978 - 87923 - 87927
- 50920N - 50925N - 50923N - 50927N
- 85973 - 85978 - 85923 - 85927
- 55920 - 55925 - 55923 - 55927
- 88972 - 88977 - 82923 - 82927

KEY



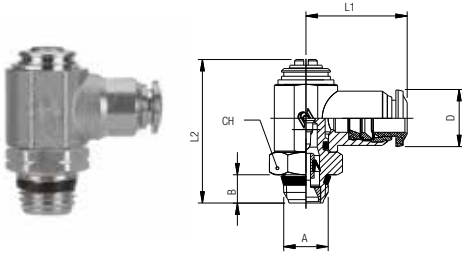
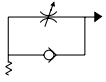
Screw Adjust



Knob Adjust

89953

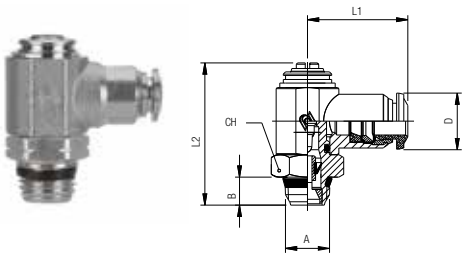
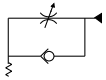
INCH TUBE FLOW CONTROL (OUT)



Part No.	Tube	A	B	L1	L2	CH	D
89953-02-32	1/8	10/32	.157 (4)	.748 (19)	.945 (21)	.315 (8)	.394 (10)
89953-02-02	1/8	1/8	.217 (5,5)	.827 (21)	1.181 (30,5)	.551 (14)	.394 (10)
89953-53-32	5/32	10/32	.157 (4)	.748 (19)	.945 (21)	.315 (8)	.394 (10)
89953-53-02	5/32	1/8	.217 (5,5)	.827 (21)	1.181 (30,5)	.551 (14)	.394 (10)
89953-04-02	1/4	1/8	.217 (5,5)	.866 (22)	1.181 (30,5)	.551 (14)	.492 (12,5)
89953-04-04	1/4	1/4	.276 (7)	.984 (25)	1.417 (36)	.669 (17)	.492 (12,5)
89953-06-04	3/8	1/4	.295 (7,5)	1.181 (30,5)	1.614 (41)	.787 (20)	.689 (17,5)
89953-06-06	3/8	3/8	.295 (7,5)	1.181 (30,5)	1.614 (41)	.787 (20)	.689 (17,5)
89953-08-06	1/2	3/8	.295 (7,5)	1.280 (32,5)	1.614 (41)	.787 (20)	.846 (21,5)
89953-08-08	1/2	1/2	.354 (9)	1.378 (35)	1.850 (47)	.945 (24)	.846 (21,5)

89963

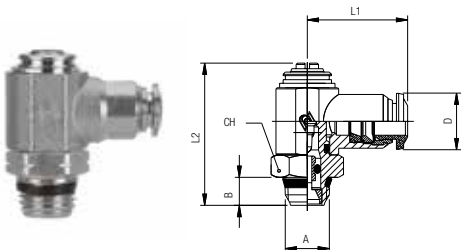
INCH TUBE FLOW CONTROL (IN)



Part No.	Tube	A	B	L1	L2	CH	D
89963-02-32	1/8	10/32	.157 (4)	.748 (19)	.945 (21)	.315 (8)	.394 (10)
89963-02-02	1/8	1/8	.217 (5,5)	.827 (21)	1.181 (30,5)	.551 (14)	.394 (10)
89963-53-32	5/32	10/32	.157 (4)	.748 (19)	.945 (21)	.315 (8)	.394 (10)
89963-53-02	5/32	1/8	.217 (5,5)	.827 (21)	1.181 (30,5)	.551 (14)	.394 (10)
89963-04-02	1/4	1/8	.217 (5,5)	.866 (22)	1.181 (30,5)	.551 (14)	.492 (12,5)
89963-04-04	1/4	1/4	.276 (7)	.984 (25)	1.417 (36)	.669 (17)	.492 (12,5)
89963-06-04	3/8	1/4	.295 (7,5)	1.181 (30,5)	1.614 (41)	.787 (20)	.689 (17,5)
89963-06-06	3/8	3/8	.295 (7,5)	1.181 (30,5)	1.614 (41)	.787 (20)	.689 (17,5)
89963-08-06	1/2	3/8	.295 (7,5)	1.280 (32,5)	1.614 (41)	.787 (20)	.846 (21,5)
89963-08-08	1/2	1/2	.354 (9)	1.378 (35)	1.850 (47)	.945 (24)	.846 (21,5)

89973

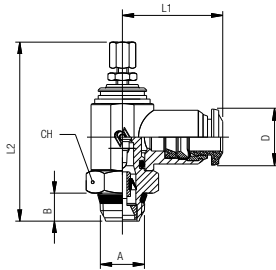
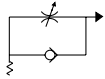
INCH TUBE NEEDLE VALVE



Part No.	Tube	A	B	L1	L2	CH	D
89973-02-32	1/8	10/32	.157 (4)	.748 (19)	.945 (21)	.315 (8)	.394 (10)
89973-02-02	1/8	1/8	.217 (5,5)	.827 (21)	1.181 (30,5)	.551 (14)	.394 (10)
89973-53-32	5/32	10/32	.157 (4)	.748 (19)	.945 (21)	.315 (8)	.394 (10)
89973-53-02	5/32	1/8	.217 (5,5)	.827 (21)	1.181 (30,5)	.551 (14)	.394 (10)
89973-04-02	1/4	1/8	.217 (5,5)	.866 (22)	1.181 (30,5)	.551 (14)	.492 (12,5)
89973-04-04	1/4	1/4	.276 (7)	.984 (25)	1.417 (36)	.669 (17)	.492 (12,5)
89973-06-04	3/8	1/4	.217 (5,5)	1.181 (30,5)	1.614 (41)	.787 (20)	.689 (17,5)
89973-06-06	3/8	3/8	.217 (5,5)	1.181 (30,5)	1.614 (41)	.787 (20)	.689 (17,5)
89973-08-06	1/2	3/8	.217 (5,5)	1.280 (32,5)	1.614 (41)	.787 (20)	.846 (21,5)
89973-08-08	1/2	1/2	.354 (9)	1.378 (35)	1.850 (47)	.945 (24)	.846 (21,5)

89958

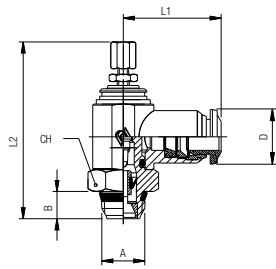
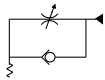
INCH TUBE FLOW CONTROL (OUT)



Part No.	Tube	A	B	L1	L2 min	L2 max	CH	D
89958-02-32	1/8	10/32	.157 (4)	.748 (19)	1.299 (33)	1.476 (37,5)	.315 (8)	.394 (10)
89958-02-02	1/8	1/8	.217 (5,5)	.827 (21)	1.614 (41)	1.830 (46,5)	.551 (14)	.394 (10)
89958-53-32	5/32	10/32	.157 (4)	.748 (19)	1.299 (33)	1.472 (37,5)	.315 (8)	.394 (10)
89958-53-02	5/32	1/8	.217 (5,5)	.827 (21)	1.614 (41)	1.830 (46,5)	.551 (14)	.394 (10)
89958-04-02	1/4	1/8	.217 (5,5)	.866 (22)	1.614 (41)	1.830 (46,5)	.551 (14)	.492 (12,5)
89958-04-04	1/4	1/4	.276 (7)	.984 (25)	1.850 (47)	2.086 (53)	.669 (17)	.492 (12,5)
89958-06-04	3/8	1/4	.295 (7,5)	1.181 (30,5)	2.205 (56)	2.480 (63)	.787 (20)	.689 (17,5)
89958-06-06	3/8	3/8	.295 (7,5)	1.181 (30,5)	2.205 (56)	2.480 (63)	.787 (20)	.689 (17,5)
89958-08-06	1/2	3/8	.295 (7,5)	1.280 (32,5)	2.205 (56)	2.480 (63)	.787 (20)	.846 (21,5)
89958-08-08	1/2	1/2	.354 (9)	1.378 (35)	2.402 (61)	2.717 (69)	.945 (24)	.846 (21,5)

89968

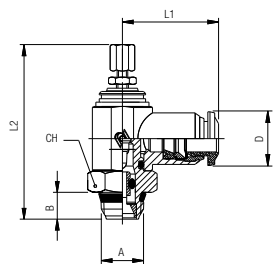
INCH TUBE FLOW CONTROL (IN)



Part No.	Tube	A	B	L1	L2 min	L2 max	CH	D
89968-02-32	1/8	10/32	.157 (4)	.748 (19)	1.299 (33)	1.476 (37,5)	.315 (8)	.394 (10)
89968-02-02	1/8	1/8	.217 (5,5)	.827 (21)	1.614 (41)	1.830 (46,5)	.551 (14)	.394 (10)
89968-53-32	5/32	10/32	.157 (4)	.748 (19)	1.299 (33)	1.472 (37,5)	.315 (8)	.394 (10)
89968-53-02	5/32	1/8	.217 (5,5)	.827 (21)	1.614 (41)	1.830 (46,5)	.551 (14)	.394 (10)
89968-04-02	1/4	1/8	.217 (5,5)	.866 (22)	1.614 (41)	1.830 (46,5)	.551 (14)	.492 (12,5)
89968-04-04	1/4	1/4	.276 (7)	.984 (25)	1.850 (47)	2.086 (53)	.669 (17)	.492 (12,5)
89968-06-04	3/8	1/4	.295 (7,5)	1.181 (30,5)	2.205 (56)	2.480 (63)	.787 (20)	.689 (17,5)
89968-06-06	3/8	3/8	.295 (7,5)	1.181 (30,5)	2.205 (56)	2.480 (63)	.787 (20)	.689 (17,5)
89968-08-06	1/2	3/8	.295 (7,5)	1.280 (32,5)	2.205 (56)	2.480 (63)	.787 (20)	.846 (21,5)
89968-08-08	1/2	1/2	.354 (9)	1.378 (35)	2.402 (61)	2.717 (69)	.945 (24)	.846 (21,5)

89978

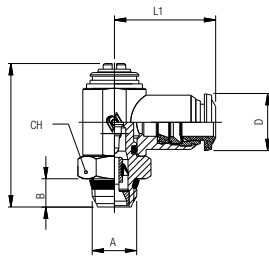
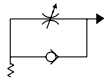
INCH TUBE NEEDLE VALVE



Part No.	Tube	A	B	L1	L2 min	L2 max	CH	D
89978-02-32	1/8	10/32	.157 (4)	.748 (19)	1.299 (33)	1.476 (37,5)	.315 (8)	.394 (10)
89978-02-02	1/8	1/8	.217 (5,5)	.827 (21)	1.614 (41)	1.830 (46,5)	.551 (14)	.394 (10)
89978-53-32	5/32	10/32	.157 (4)	.748 (19)	1.299 (33)	1.472 (37,5)	.315 (8)	.394 (10)
89978-53-02	5/32	1/8	.217 (5,5)	.827 (21)	1.614 (41)	1.830 (46,5)	.551 (14)	.394 (10)
89978-04-02	1/4	1/8	.217 (5,5)	.866 (22)	1.614 (41)	1.830 (46,5)	.551 (14)	.492 (12,5)
89978-04-04	1/4	1/4	.276 (7)	.984 (25)	1.850 (47)	2.086 (53)	.669 (17)	.492 (12,5)
89978-06-04	3/8	1/4	.295 (7,5)	1.181 (30,5)	2.205 (56)	2.480 (63)	.787 (20)	.689 (17,5)
89978-06-06	3/8	3/8	.295 (7,5)	1.181 (30,5)	2.205 (56)	2.480 (63)	.787 (20)	.689 (17,5)
89978-08-06	1/2	3/8	.295 (7,5)	1.280 (32,5)	2.205 (56)	2.480 (63)	.787 (20)	.846 (21,5)
89978-08-08	1/2	1/2	.354 (9)	1.378 (35)	2.402 (61)	2.717 (69)	.945 (24)	.846 (21,5)

88953

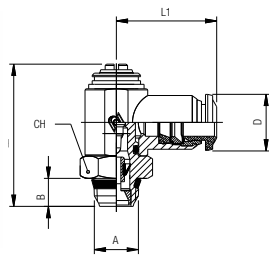
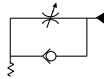
INCH TUBE FLOW CONTROL (OUT)



Part No.	Tube	A	B	L1	L2	CH	D
88953-02-32	1/8	10/32	.157 (4)	.748 (19)	.945 (21)	.315 (8)	.394 (10)
88953-02-02	1/8	1/8	.217 (5,5)	.827 (21)	1.181 (30,5)	.551 (14)	.394 (10)
88953-53-32	5/32	10/32	.157 (4)	.748 (19)	.945 (21)	.315 (8)	.394 (10)
88953-53-02	5/32	1/8	.217 (5,5)	.827 (21)	1.181 (30,5)	.551 (14)	.394 (10)
88953-04-02	1/4	1/8	.217 (5,5)	.866 (22)	1.181 (30,5)	.551 (14)	.492 (12,5)
88953-04-04	1/4	1/4	.276 (7)	.984 (25)	1.417 (36)	.669 (17)	.492 (12,5)
88953-06-04	3/8	1/4	.295 (7,5)	1.181 (30,5)	1.614 (41)	.787 (20)	.689 (17,5)
88953-06-06	3/8	3/8	.295 (7,5)	1.181 (30,5)	1.614 (41)	.787 (20)	.689 (17,5)
88953-08-06	1/2	3/8	.295 (7,5)	1.280 (32,5)	1.614 (41)	.787 (20)	.846 (21,5)
88953-08-08	1/2	1/2	.354 (9)	1.378 (35)	1.850 (47)	.945 (24)	.846 (21,5)

88963

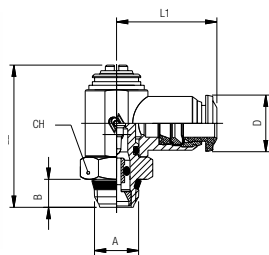
INCH TUBE FLOW CONTROL (IN)



Part No.	Tube	A	B	L1	L2	CH	D
88963-02-32	1/8	10/32	.157 (4)	.748 (19)	.945 (21)	.315 (8)	.394 (10)
88963-02-02	1/8	1/8	.217 (5,5)	.827 (21)	1.181 (30,5)	.551 (14)	.394 (10)
88963-53-32	5/32	10/32	.157 (4)	.748 (19)	.945 (21)	.315 (8)	.394 (10)
88963-53-02	5/32	1/8	.217 (5,5)	.827 (21)	1.181 (30,5)	.551 (14)	.394 (10)
88963-04-02	1/4	1/8	.217 (5,5)	.866 (22)	1.181 (30,5)	.551 (14)	.492 (12,5)
88963-04-04	1/4	1/4	.276 (7)	.984 (25)	1.417 (36)	.669 (17)	.492 (12,5)
88963-06-04	3/8	1/4	.295 (7,5)	1.181 (30,5)	1.614 (41)	.787 (20)	.689 (17,5)
88963-06-06	3/8	3/8	.295 (7,5)	1.181 (30,5)	1.614 (41)	.787 (20)	.689 (17,5)
88963-08-06	1/2	3/8	.295 (7,5)	1.280 (32,5)	1.614 (41)	.787 (20)	.846 (21,5)
88963-08-08	1/2	1/2	.354 (9)	1.378 (35)	1.850 (47)	.945 (24)	.846 (21,5)

88973

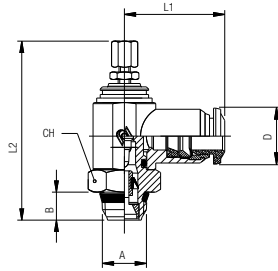
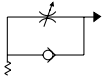
INCH TUBE NEEDLE VALVE



Part No.	Tube	A	B	L1	L2	CH	D
88973-02-32	1/8	10/32	.157 (4)	.748 (19)	.945 (21)	.315 (8)	.394 (10)
88973-02-02	1/8	1/8	.217 (5,5)	.827 (21)	1.181 (30,5)	.551 (14)	.394 (10)
88973-53-32	5/32	10/32	.157 (4)	.748 (19)	.945 (21)	.315 (8)	.394 (10)
88973-53-02	5/32	1/8	.217 (5,5)	.827 (21)	1.181 (30,5)	.551 (14)	.394 (10)
88973-04-02	1/4	1/8	.217 (5,5)	.866 (22)	1.181 (30,5)	.551 (14)	.492 (12,5)
88973-04-04	1/4	1/4	.276 (7)	.984 (25)	1.417 (36)	.669 (17)	.492 (12,5)
88973-06-04	3/8	1/4	.295 (7,5)	1.181 (30,5)	1.614 (41)	.787 (20)	.689 (17,5)
88973-06-06	3/8	3/8	.295 (7,5)	1.181 (30,5)	1.614 (41)	.787 (20)	.689 (17,5)
88973-08-06	1/2	3/8	.295 (7,5)	1.280 (32,5)	1.614 (41)	.787 (20)	.846 (21,5)
88973-08-08	1/2	1/2	.354 (9)	1.378 (35)	1.850 (47)	.945 (24)	.846 (21,5)

88958

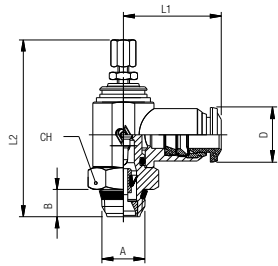
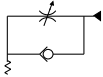
INCH TUBE FLOW CONTROL (OUT)



Part No.	Tube	A	B	L1	L2 min	L2 max	CH	D
88958-02-32	1/8	10/32	.157 (4)	.748 (19)	1.299 (33)	1.476 (37,5)	.315 (8)	.394 (10)
88958-02-02	1/8	1/8	.217 (5,5)	.827 (21)	1.614 (41)	1.830 (46,5)	.551 (14)	.394 (10)
88958-53-32	5/32	10/32	.157 (4)	.748 (19)	1.299 (33)	1.472 (37,5)	.315 (8)	.394 (10)
88958-53-02	5/32	1/8	.217 (5,5)	.827 (21)	1.614 (41)	1.830 (46,5)	.551 (14)	.394 (10)
88958-04-02	1/4	1/8	.217 (5,5)	.866 (22)	1.614 (41)	1.830 (46,5)	.551 (14)	.492 (12,5)
88958-04-04	1/4	1/4	.276 (7)	.984 (25)	1.850 (47)	2.086 (53)	.669 (17)	.492 (12,5)
88958-06-04	3/8	1/4	.295 (7,5)	1.181 (30,5)	2.205 (56)	2.480 (63)	.787 (20)	.689 (17,5)
88958-06-06	3/8	3/8	.295 (7,5)	1.181 (30,5)	2.205 (56)	2.480 (63)	.787 (20)	.689 (17,5)
88958-08-06	1/2	3/8	.295 (7,5)	1.280 (32,5)	2.205 (56)	2.480 (63)	.787 (20)	.846 (21,5)
88958-08-08	1/2	1/2	.354 (9)	1.378 (35)	2.402 (61)	2.717 (69)	.945 (24)	.846 (21,5)

88968

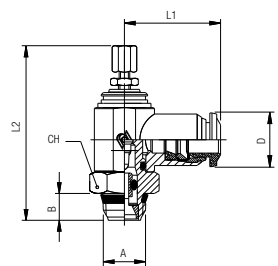
INCH TUBE FLOW CONTROL (IN)



Part No.	Tube	A	B	L1	L2 min	L2 max	CH	D
88968-02-32	1/8	10/32	.157 (4)	.748 (19)	1.299 (33)	1.476 (37,5)	.315 (8)	.394 (10)
88968-02-02	1/8	1/8	.217 (5,5)	.827 (21)	1.614 (41)	1.830 (46,5)	.551 (14)	.394 (10)
88968-53-32	5/32	10/32	.157 (4)	.748 (19)	1.299 (33)	1.476 (37,5)	.315 (8)	.394 (10)
88968-53-02	5/32	1/8	.217 (5,5)	.827 (21)	1.614 (41)	1.830 (46,5)	.551 (14)	.394 (10)
88968-04-02	1/4	1/8	.217 (5,5)	.866 (22)	1.614 (41)	1.830 (46,5)	.551 (14)	.492 (12,5)
88968-04-04	1/4	1/4	.276 (7)	.984 (25)	1.850 (47)	2.086 (53)	.669 (17)	.492 (12,5)
88968-06-04	3/8	1/4	.295 (7,5)	1.181 (30,5)	2.205 (56)	2.480 (63)	.787 (20)	.689 (17,5)
88968-06-06	3/8	3/8	.295 (7,5)	1.181 (30,5)	2.205 (56)	2.480 (63)	.787 (20)	.689 (17,5)
88968-08-06	1/2	3/8	.295 (7,5)	1.280 (32,5)	2.205 (56)	2.480 (63)	.787 (20)	.846 (21,5)
88968-08-08	1/2	1/2	.354 (9)	1.378 (35)	2.205 (56)	2.717 (69)	.945 (24)	.846 (21,5)

88978

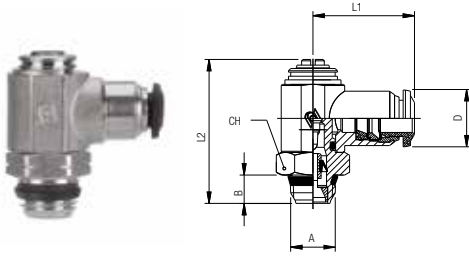
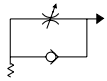
INCH TUBE NEEDLE VALVE



Part No.	Tube	A	B	L1	L2 min	L2 max	CH	D
88978-02-32	1/8	10/32	.157 (4)	.748 (19)	1.299 (33)	1.476 (37,5)	.315 (8)	.394 (10)
88978-02-02	1/8	1/8	.217 (5,5)	.827 (21)	1.614 (41)	1.830 (46,5)	.551 (14)	.394 (10)
88978-53-32	5/32	10/32	.157 (4)	.748 (19)	1.299 (33)	1.472 (37,5)	.315 (8)	.394 (10)
88978-53-02	5/32	1/8	.217 (5,5)	.827 (21)	1.614 (41)	1.830 (46,5)	.551 (14)	.394 (10)
88978-04-02	1/4	1/8	.217 (5,5)	.866 (22)	1.614 (41)	1.830 (46,5)	.551 (14)	.492 (12,5)
88978-04-04	1/4	1/4	.276 (7)	.984 (25)	1.850 (47)	2.086 (53)	.669 (17)	.492 (12,5)
88978-06-04	3/8	1/4	.295 (7,5)	1.181 (30,5)	2.205 (56)	2.480 (63)	.787 (20)	.689 (17,5)
88978-06-06	3/8	3/8	.295 (7,5)	1.181 (30,5)	2.205 (56)	2.480 (63)	.787 (20)	.689 (17,5)
88978-08-06	1/2	3/8	.295 (7,5)	1.280 (32,5)	2.205 (56)	2.480 (63)	.787 (20)	.846 (21,5)
88978-08-08	1/2	1/2	.354 (9)	1.378 (35)	2.402 (61)	2.717 (69)	.945 (24)	.846 (21,5)

50901N

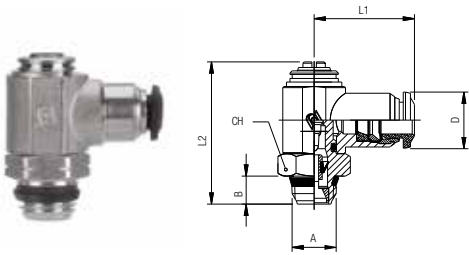
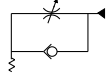
METRIC TUBE FLOW CONTROL (OUT)



Part No.	Tube	A	B	L1	L2	CH	D
50901N-3-M5	3	M5	.157 (4)	.748 (19)	1.161 (29,5)	.315 (8)	.394 (10)
50901N-4-M5	5/32 (4)	M5	.157 (4)	.748 (19)	1.161 (29,5)	.315 (8)	.394 (10)
50901N-4-1/8	5/32 (4)	1/8	.217 (5,5)	.827 (21)	1.220 (31)	.551 (14)	.394 (10)
50901N-5-M5	5	M5	.157 (4)	.787 (20)	1.161 (29,5)	.315 (8)	.492 (12,5)
50901N-5-1/8	5	1/8	.217 (5,5)	.846 (21,5)	1.220 (31)	.551 (14)	.492 (12,5)
50901N-5-1/4	5	1/4	.276 (7)	.965 (24,5)	1.437 (36,5)	.669 (17)	.492 (12,5)
50901N-6-M5	6	M5	.157 (4)	.807 (20,5)	1.161 (29,5)	.315 (8)	.492 (12,5)
50901N-6-1/8	6	1/8	.217 (5,5)	.886 (22,5)	1.220 (31)	.551 (14)	.492 (12,5)
50901N-6-1/4	6	1/4	.276 (7)	.984 (25)	1.437 (36,5)	.669 (17)	.492 (12,5)
50901N-8-1/8	5/16 (8)	1/8	.217 (5,5)	.945 (24)	1.220 (31)	.551 (14)	.551 (14)
50901N-8-1/4	5/16 (8)	1/4	.276 (7)	1.024 (26)	1.437 (36,5)	.669 (17)	.551 (14)
50901N-8-3/8	5/16 (8)	3/8	.295 (7,5)	1.122 (28,5)	1.673 (42,5)	.787 (20)	.551 (14)
50901N-10-1/4	10	1/4	.276 (7)	1.122 (28,5)	1.437 (36,5)	.669 (17)	.669 (17)
50901N-10-3/8	10	3/8	.295 (7,5)	1.201 (30,5)	1.673 (42,5)	.787 (20)	.669 (17)
50901N-12-3/8	12	3/8	.295 (7,5)	1.280 (32,5)	1.673 (42,5)	.787 (20)	.846 (21,5)
50901N-12-1/2	12	1/2	.354 (9)	1.378 (35)	1.850 (47)	.945 (24)	.846 (21,5)
50901N-14-1/2	14	1/2	.354 (9)	1.398 (35,5)	1.850 (47)	.945 (24)	.846 (21,5)

50910N

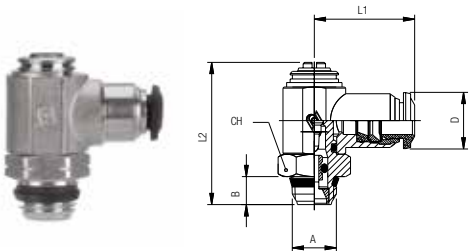
METRIC TUBE FLOW CONTROL (IN)



Part No.	Tube	A	B	L1	L2	CH	D
50910N-3-M5	3	M5	.157 (4)	.748 (19)	1.161 (29,5)	.315 (8)	.394 (10)
50910N-4-M5	5/32 (4)	M5	.157 (4)	.748 (19)	1.161 (29,5)	.315 (8)	.394 (10)
50910N-4-1/8	5/32 (4)	1/8	.217 (5,5)	.827 (21)	1.220 (31)	.551 (14)	.394 (10)
50910N-5-M5	5	M5	.157 (4)	.787 (20)	1.161 (29,5)	.315 (8)	.492 (12,5)
50910N-5-1/8	5	1/8	.217 (5,5)	.846 (21,5)	1.220 (31)	.551 (14)	.492 (12,5)
50910N-5-1/4	5	1/4	.276 (7)	.965 (24,5)	1.437 (36,5)	.669 (17)	.492 (12,5)
50910N-6-M5	6	M5	.157 (4)	.807 (20,5)	1.161 (29,5)	.315 (8)	.492 (12,5)
50910N-6-1/8	6	1/8	.217 (5,5)	.886 (22,5)	1.220 (31)	.551 (14)	.492 (12,5)
50910N-6-1/4	6	1/4	.276 (7)	.984 (25)	1.437 (36,5)	.669 (17)	.492 (12,5)
50910N-8-1/8	5/16 (8)	1/8	.217 (5,5)	.945 (24)	1.220 (31)	.551 (14)	.551 (14)
50910N-8-1/4	5/16 (8)	1/4	.276 (7)	1.024 (26)	1.437 (36,5)	.669 (17)	.551 (14)
50910N-8-3/8	5/16 (8)	3/8	.295 (7,5)	1.122 (28,5)	1.673 (42,5)	.787 (20)	.551 (14)
50910N-10-1/4	10	1/4	.276 (7)	1.122 (28,5)	1.437 (36,5)	.669 (17)	.669 (17)
50910N-10-3/8	10	3/8	.295 (7,5)	1.201 (30,5)	1.673 (42,5)	.787 (20)	.669 (17)
50910N-12-3/8	12	3/8	.295 (7,5)	1.280 (32,5)	1.673 (42,5)	.787 (20)	.846 (21,5)
50910N-12-1/2	12	1/2	.354 (9)	1.378 (35)	1.850 (47)	.945 (24)	.846 (21,5)
50910N-14-1/2	14	1/2	.354 (9)	1.398 (35,5)	1.850 (47)	.945 (24)	.846 (21,5)

50920N

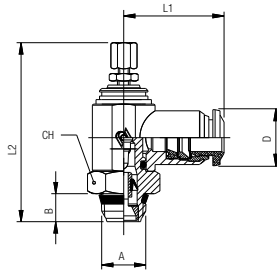
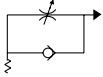
METRIC TUBE NEEDLE VALVE



Part No.	Tube	A	B	L1	L2	CH	D
50920N-3-M5	3	M5	.157 (4)	.748 (19)	1.161 (29,5)	.315 (8)	.394 (10)
50920N-4-M5	5/32 (4)	M5	.157 (4)	.748 (19)	1.161 (29,5)	.315 (8)	.394 (10)
50920N-4-1/8	5/32 (4)	1/8	.217 (5,5)	.827 (21)	1.220 (31)	.551 (14)	.394 (10)
50920N-5-M5	5	M5	.157 (4)	.787 (20)	1.161 (29,5)	.315 (8)	.492 (12,5)
50920N-5-1/8	5	1/8	.217 (5,5)	.846 (21,5)	1.220 (31)	.551 (14)	.492 (12,5)
50920N-5-1/4	5	1/4	.276 (7)	.965 (24,5)	1.437 (36,5)	.669 (17)	.492 (12,5)
50920N-6-M5	6	M5	.157 (4)	.807 (20,5)	1.161 (29,5)	.315 (8)	.492 (12,5)
50920N-6-1/8	6	1/8	.217 (5,5)	.886 (22,5)	1.220 (31)	.551 (14)	.492 (12,5)
50920N-6-1/4	6	1/4	.276 (7)	.984 (25)	1.437 (36,5)	.669 (17)	.492 (12,5)
50920N-8-1/8	5/16 (8)	1/8	.217 (5,5)	.945 (24)	1.220 (31)	.551 (14)	.551 (14)
50920N-8-1/4	5/16 (8)	1/4	.276 (7)	1.024 (26)	1.437 (36,5)	.669 (17)	.551 (14)
50920N-8-3/8	5/16 (8)	3/8	.295 (7,5)	1.122 (28,5)	1.673 (42,5)	.787 (20)	.551 (14)
50920N-10-1/4	10	1/4	.276 (7)	1.122 (28,5)	1.437 (36,5)	.669 (17)	.669 (17)
50920N-10-3/8	10	3/8	.295 (7,5)	1.201 (30,5)	1.673 (42,5)	.787 (20)	.669 (17)
50920N-12-3/8	12	3/8	.295 (7,5)	1.280 (32,5)	1.673 (42,5)	.787 (20)	.846 (21,5)
50920N-12-1/2	12	1/2	.354 (9)	1.378 (35)	1.850 (47)	.945 (24)	.846 (21,5)
50920N-14-1/2	14	1/2	.354 (9)	1.398 (35,5)	1.850 (47)	.945 (24)	.846 (21,5)

50905N

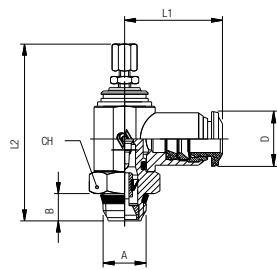
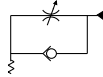
METRIC TUBE FLOW CONTROL (OUT)



Part No.	Tube	A	B	L1	L2 min	L2 max	CH	D
50905N-3-M5	3	M5	.157 (4)	.748 (19)	1.516 (38,5)	1.673 (42,5)	.315 (8)	.394 (10)
50905N-4-M5	5/32 (4)	M5	.157 (4)	.748 (19)	1.516 (38,5)	1.673 (42,5)	.315 (8)	.394 (10)
50905N-4-1/8	5/32 (4)	1/8	.217 (5,5)	.827 (21)	1.732 (44)	1.929 (49)	.551 (14)	.394 (10)
50905N-5-M5	5	M5	.157 (4)	.787 (20)	1.516 (38,5)	1.673 (42,5)	.315 (8)	.492 (12,5)
50905N-5-1/8	5	1/8	.217 (5,5)	.846 (21,5)	1.732 (44)	1.929 (49)	.551 (14)	.492 (12,5)
50905N-5-1/4	5	1/4	.276 (7)	.965 (24,5)	1.909 (48,5)	2.165 (55)	.669 (17)	.492 (12,5)
50905N-6-M5	6	M5	.157 (4)	.807 (20,5)	1.516 (38,5)	1.673 (42,5)	.315 (8)	.492 (12,5)
50905N-6-1/8	6	1/8	.217 (5,5)	.886 (22,5)	1.732 (44)	1.929 (49)	.551 (14)	.492 (12,5)
50905N-6-1/4	6	1/4	.276 (7)	.984 (25)	1.909 (48,5)	2.165 (55)	.669 (17)	.492 (12,5)
50905N-8-1/8	5/16 (8)	1/8	.217 (5,5)	.945 (24)	1.732 (44)	1.929 (49)	.551 (14)	.551 (14)
50905N-8-1/4	5/16 (8)	1/4	.276 (7)	1.024 (26)	1.909 (48,5)	2.165 (55)	.669 (17)	.551 (14)
50905N-8-3/8	5/16 (8)	3/8	.295 (7,5)	1.122 (28,5)	2.205 (56)	2.559 (65)	.787 (20)	.551 (14)
50905N-10-1/4	10	1/4	.276 (7)	1.122 (28,5)	1.909 (48,5)	2.165 (55)	.669 (17)	.669 (17)
50905N-10-3/8	10	3/8	.295 (7,5)	1.201 (30,5)	2.205 (56)	2.559 (65)	.787 (20)	.669 (17)
50905N-12-3/8	12	3/8	.295 (7,5)	1.280 (32,5)	2.205 (56)	2.559 (65)	.787 (20)	.846 (21,5)
50905N-12-1/2	12	1/2	.354 (9)	1.378 (35)	2.441 (62)	2.717 (69)	.945 (24)	.846 (21,5)
50905N-14-1/2	14	1/2	.354 (9)	1.398 (35,5)	2.441 (62)	2.717 (69)	.945 (24)	.846 (21,5)

50915N

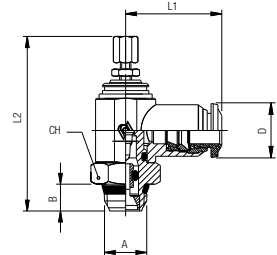
METRIC TUBE FLOW CONTROL (IN)



Part No.	Tube	A	B	L1	L2 min	L2 max	CH	D
50915N-3-M5	3	M5	.157 (4)	.748 (19)	1.516 (38,5)	1.673 (42,5)	.315 (8)	.394 (10)
50915N-4-M5	5/32 (4)	M5	.157 (4)	.748 (19)	1.516 (38,5)	1.673 (42,5)	.315 (8)	.394 (10)
50915N-4-1/8	5/32 (4)	1/8	.217 (5,5)	.827 (21)	1.732 (44)	1.929 (49)	.551 (14)	.394 (10)
50915N-5-M5	5	M5	.157 (4)	.787 (20)	1.516 (38,5)	1.673 (42,5)	.315 (8)	.492 (12,5)
50915N-5-1/8	5	1/8	.217 (5,5)	.846 (21,5)	1.732 (44)	1.929 (49)	.551 (14)	.492 (12,5)
50915N-5-1/4	5	1/4	.276 (7)	.965 (24,5)	1.909 (48,5)	2.165 (55)	.669 (17)	.492 (12,5)
50915N-6-M5	6	M5	.157 (4)	.807 (20,5)	1.516 (38,5)	1.673 (42,5)	.315 (8)	.492 (12,5)
50915N-6-1/8	6	1/8	.217 (5,5)	.886 (22,5)	1.732 (44)	1.929 (49)	.551 (14)	.492 (12,5)
50915N-6-1/4	6	1/4	.276 (7)	.984 (25)	1.909 (48,5)	2.165 (55)	.669 (17)	.492 (12,5)
50915N-8-1/8	5/16 (8)	1/8	.217 (5,5)	.945 (24)	1.732 (44)	1.929 (49)	.551 (14)	.551 (14)
50915N-8-1/4	5/16 (8)	1/4	.276 (7)	1.024 (26)	1.909 (48,5)	2.165 (55)	.669 (17)	.551 (14)
50915N-8-3/8	5/16 (8)	3/8	.295 (7,5)	1.122 (28,5)	2.205 (56)	2.559 (65)	.787 (20)	.551 (14)
50915N-10-1/4	10	1/4	.276 (7)	1.122 (28,5)	1.909 (48,5)	2.165 (55)	.669 (17)	.669 (17)
50915N-10-3/8	10	3/8	.295 (7,5)	1.201 (30,5)	2.205 (56)	2.559 (65)	.787 (20)	.669 (17)
50915N-12-3/8	12	3/8	.295 (7,5)	1.280 (32,5)	2.205 (56)	2.559 (65)	.787 (20)	.846 (21,5)
50915N-12-1/2	12	1/2	.354 (9)	1.378 (35)	2.441 (62)	2.717 (69)	.945 (24)	.846 (21,5)
50915N-14-1/2	14	1/2	.354 (9)	1.398 (35,5)	2.441 (62)	2.717 (69)	.945 (24)	.846 (21,5)

50925N

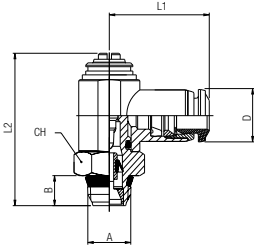
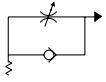
METRIC TUBE NEEDLE VALVE



Part No.	Tube	A	B	L1	L2 min	L2 max	CH	D
50925N-3-M5	3	M5	.157 (4)	.748 (19)	1.516 (38,5)	1.673 (42,5)	.315 (8)	.394 (10)
50925N-4-M5	5/32 (4)	M5	.157 (4)	.748 (19)	1.516 (38,5)	1.673 (42,5)	.315 (8)	.394 (10)
50925N-4-1/8	5/32 (4)	1/8	.217 (5,5)	.827 (21)	1.732 (44)	1.929 (49)	.551 (14)	.394 (10)
50925N-5-M5	5	M5	.157 (4)	.787 (20)	1.516 (38,5)	1.673 (42,5)	.315 (8)	.492 (12,5)
50925N-5-1/8	5	1/8	.217 (5,5)	.846 (21,5)	1.732 (44)	1.929 (49)	.551 (14)	.492 (12,5)
50925N-5-1/4	5	1/4	.276 (7)	.965 (24,5)	1.909 (48,5)	2.165 (55)	.669 (17)	.492 (12,5)
50925N-6-M5	6	M5	.157 (4)	.807 (20,5)	1.516 (38,5)	1.673 (42,5)	.315 (8)	.492 (12,5)
50925N-6-1/8	6	1/8	.217 (5,5)	.886 (22,5)	1.732 (44)	1.929 (49)	.551 (14)	.492 (12,5)
50925N-6-1/4	6	1/4	.276 (7)	.984 (25)	1.909 (48,5)	2.165 (55)	.669 (17)	.492 (12,5)
50925N-8-1/8	5/16 (8)	1/8	.217 (5,5)	.945 (24)	1.732 (44)	1.929 (49)	.551 (14)	.551 (14)
50925N-8-1/4	5/16 (8)	1/4	.276 (7)	1.024 (26)	1.909 (48,5)	2.165 (55)	.669 (17)	.551 (14)
50925N-8-3/8	5/16 (8)	3/8	.295 (7,5)	1.122 (28,5)	2.205 (56)	2.559 (65)	.787 (20)	.551 (14)
50925N-10-1/4	10	1/4	.276 (7)	1.122 (28,5)	1.909 (48,5)	2.165 (55)	.669 (17)	.669 (17)
50925N-10-3/8	10	3/8	.295 (7,5)	1.201 (30,5)	2.205 (56)	2.559 (65)	.787 (20)	.669 (17)
50925N-12-3/8	12	3/8	.295 (7,5)	1.280 (32,5)	2.205 (56)	2.559 (65)	.787 (20)	.846 (21,5)
50925N-12-1/2	12	1/2	.354 (9)	1.378 (35)	2.441 (62)	2.717 (69)	.945 (24)	.846 (21,5)
50925N-14-1/2	14	1/2	.354 (9)	1.398 (35,5)	2.441 (62)	2.717 (69)	.945 (24)	.846 (21,5)

85953

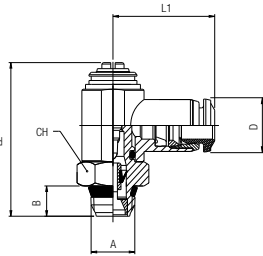
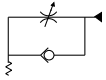
INCH TUBE FLOW CONTROL (OUT)



Part No.	Tube	A	B	L1	L2	CH	D
85953-02-32	1/8	10/32	.157 (4)	.748 (19)	.945 (21)	.315 (8)	.394 (10)
85953-02-02	1/8	1/8	.217 (5,5)	.827 (21)	1.181 (30,5)	.551 (14)	.394 (10)
85953-53-32	5/32	10/32	.157 (4)	.748 (19)	.945 (21)	.315 (8)	.394 (10)
85953-53-02	5/32	1/8	.217 (5,5)	.827 (21)	1.181 (30,5)	.551 (14)	.394 (10)
85953-04-02	1/4	1/8	.217 (5,5)	.866 (22)	1.181 (30,5)	.551 (14)	.472 (12)
85953-04-04	1/4	1/4	.276 (7)	.984 (25)	1.417 (36)	.669 (17)	.472 (12)
85953-06-04	3/8	1/4	.295 (7,5)	1.181 (30,5)	1.614 (41)	.787 (20)	.669 (17)
85953-06-06	3/8	3/8	.295 (7,5)	1.181 (30,5)	1.614 (41)	.787 (20)	.669 (17)
85953-08-06	1/2	3/8	.295 (7,5)	1.280 (32,5)	1.614 (41)	.787 (20)	.787 (20)
85953-08-08	1/2	1/2	.354 (9)	1.378 (35)	1.850 (47)	.945 (24)	.787 (20)

85963

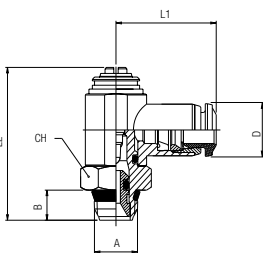
INCH TUBE FLOW CONTROL (IN)



Part No.	Tube	A	B	L1	L2	CH	D
85963-02-32	1/8	10/32	.157 (4)	.748 (19)	.945 (21)	.315 (8)	.394 (10)
85963-02-02	1/8	1/8	.217 (5,5)	.827 (21)	1.181 (30,5)	.551 (14)	.394 (10)
85963-53-32	5/32	10/32	.157 (4)	.748 (19)	.945 (21)	.315 (8)	.394 (10)
85963-53-02	5/32	1/8	.217 (5,5)	.827 (21)	1.181 (30,5)	.551 (14)	.394 (10)
85963-04-02	1/4	1/8	.217 (5,5)	.866 (22)	1.181 (30,5)	.551 (14)	.472 (12)
85963-04-04	1/4	1/4	.276 (7)	.984 (25)	1.417 (36)	.669 (17)	.472 (12)
85963-06-04	3/8	1/4	.295 (7,5)	1.181 (30,5)	1.614 (41)	.787 (20)	.669 (17)
85963-06-06	3/8	3/8	.295 (7,5)	1.181 (30,5)	1.614 (41)	.787 (20)	.669 (17)
85963-08-06	1/2	3/8	.295 (7,5)	1.280 (32,5)	1.614 (41)	.787 (20)	.787 (20)
85963-08-08	1/2	1/2	.354 (9)	1.378 (35)	1.850 (47)	.945 (24)	.787 (20)

85973

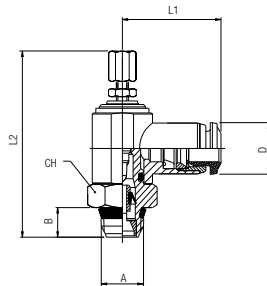
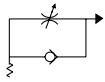
INCH TUBE NEEDLE VALVE



Part No.	Tube	A	B	L1	L2	CH	D
85973-02-32	1/8	10/32	.157 (4)	.748 (19)	.945 (21)	.315 (8)	.394 (10)
85973-02-02	1/8	1/8	.217 (5,5)	.827 (21)	1.181 (30,5)	.551 (14)	.394 (10)
85973-53-32	5/32	10/32	.157 (4)	.748 (19)	.945 (21)	.315 (8)	.394 (10)
85973-53-02	5/32	1/8	.217 (5,5)	.827 (21)	1.181 (30,5)	.551 (14)	.394 (10)
85973-04-02	1/4	1/8	.217 (5,5)	.866 (22)	1.181 (30,5)	.551 (14)	.472 (12)
85973-04-04	1/4	1/4	.276 (7)	.984 (25)	1.417 (36)	.669 (17)	.472 (12)
85973-06-04	3/8	1/4	.295 (7,5)	1.181 (30,5)	1.614 (41)	.787 (20)	.669 (17)
85973-06-06	3/8	3/8	.295 (7,5)	1.181 (30,5)	1.614 (41)	.787 (20)	.669 (17)
85973-08-06	1/2	3/8	.295 (7,5)	1.280 (32,5)	1.614 (41)	.787 (20)	.787 (20)
85973-08-08	1/2	1/2	.354 (9)	1.378 (35)	1.850 (47)	.945 (24)	.787 (20)

85958

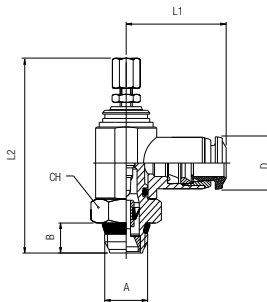
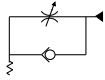
INCH TUBE FLOW CONTROL (OUT)



Part No.	Tube	A	B	L1	L2 min	L2 max	CH	D
85958-02-32	1/8	10/32	.157 (4)	.748 (19)	1.299 (33)	1.476 (37,5)	.315 (8)	.394 (10)
85958-02-02	1/8	1/8	.217 (5,5)	.827 (21)	1.614 (41)	1.830 (46,5)	.551 (14)	.394 (10)
85958-53-32	5/32	10/32	.157 (4)	.748 (19)	1.299 (33)	1.472 (37,5)	.315 (8)	.394 (10)
85958-53-02	5/32	1/8	.217 (5,5)	.827 (21)	1.614 (41)	1.830 (46,5)	.551 (14)	.394 (10)
85958-04-02	1/4	1/8	.217 (5,5)	.866 (22)	1.614 (41)	1.830 (46,5)	.551 (14)	.472 (12)
85958-04-04	1/4	1/4	.276 (7)	.984 (25)	1.850 (47)	2.086 (53)	.669 (17)	.472 (12)
85958-06-04	3/8	1/4	.295 (7,5)	1.181 (30,5)	2.205 (56)	2.480 (63)	.787 (20)	.669 (17)
85958-06-06	3/8	3/8	.295 (7,5)	1.181 (30,5)	2.205 (56)	2.480 (63)	.787 (20)	.669 (17)
85958-08-06	1/2	3/8	.295 (7,5)	1.280 (32,5)	2.205 (56)	2.480 (63)	.787 (20)	.787 (20)
85958-08-08	1/2	1/2	.354 (9)	1.378 (35)	2.402 (61)	2.717 (69)	.945 (24)	.787 (20)

85968

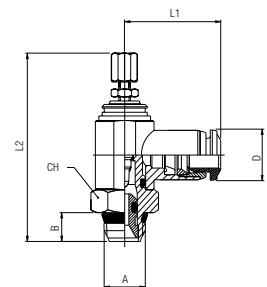
INCH TUBE FLOW CONTROL (IN)



Part No.	Tube	A	B	L1	L2 min	L2 max	CH	D
85968-02-32	1/8	10/32	.157 (4)	.748 (19)	1.299 (33)	1.476 (37,5)	.315 (8)	.394 (10)
85968-02-02	1/8	1/8	.217 (5,5)	.827 (21)	1.614 (41)	1.830 (46,5)	.551 (14)	.394 (10)
85968-53-32	5/32	10/32	.157 (4)	.748 (19)	1.299 (33)	1.476 (37,5)	.315 (8)	.394 (10)
85968-53-02	5/32	1/8	.217 (5,5)	.827 (21)	1.614 (41)	1.830 (46,5)	.551 (14)	.394 (10)
85968-04-02	1/4	1/8	.217 (5,5)	.866 (22)	1.614 (41)	1.830 (46,5)	.551 (14)	.472 (12)
85968-04-04	1/4	1/4	.276 (7)	.984 (25)	1.850 (47)	2.086 (53)	.669 (17)	.472 (12)
85968-06-04	3/8	1/4	.295 (7,5)	1.181 (30,5)	2.205 (56)	2.480 (63)	.787 (20)	.669 (17)
85968-06-06	3/8	3/8	.295 (7,5)	1.181 (30,5)	2.205 (56)	2.480 (63)	.787 (20)	.669 (17)
85968-08-06	1/2	3/8	.295 (7,5)	1.280 (32,5)	2.205 (56)	2.480 (63)	.787 (20)	.787 (20)
85968-08-08	1/2	1/2	.354 (9)	1.378 (35)	2.205 (56)	2.717 (69)	.945 (24)	.787 (20)

85978

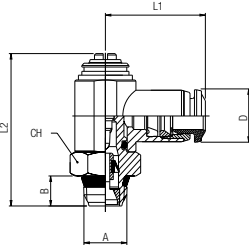
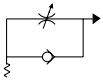
INCH TUBE NEEDLE VALVE



Part No.	Tube	A	B	L1	L2 min	L2 max	CH	D
85978-02-32	1/8	10/32	.157 (4)	.748 (19)	1.299 (33)	1.476 (37,5)	.315 (8)	.394 (10)
85978-02-02	1/8	1/8	.217 (5,5)	.827 (21)	1.614 (41)	1.830 (46,5)	.551 (14)	.394 (10)
85978-53-32	5/32	10/32	.157 (4)	.748 (19)	1.299 (33)	1.472 (37,5)	.315 (8)	.394 (10)
85978-53-02	5/32	1/8	.217 (5,5)	.827 (21)	1.614 (41)	1.830 (46,5)	.551 (14)	.394 (10)
85978-04-02	1/4	1/8	.217 (5,5)	.866 (22)	1.614 (41)	1.830 (46,5)	.551 (14)	.472 (12)
85978-04-04	1/4	1/4	.276 (7)	.984 (25)	1.850 (47)	2.086 (53)	.669 (17)	.472 (12)
85978-06-04	3/8	1/4	.295 (7,5)	1.181 (30,5)	2.205 (56)	2.480 (63)	.787 (20)	.669 (17)
85978-06-06	3/8	3/8	.295 (7,5)	1.181 (30,5)	2.205 (56)	2.480 (63)	.787 (20)	.669 (17)
85978-08-06	1/2	3/8	.295 (7,5)	1.280 (32,5)	2.205 (56)	2.480 (63)	.787 (20)	.787 (20)
85978-08-08	1/2	1/2	.354 (9)	1.378 (35)	2.402 (61)	2.717 (69)	.945 (24)	.787 (20)

55901

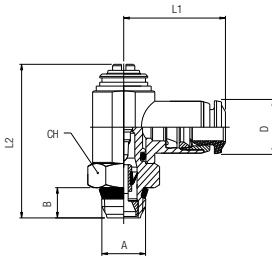
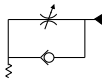
METRIC TUBE FLOW CONTROL (OUT)



Part No.	Tube	A	B	L1	L2	CH	D
55901-4-M5	5/32 (4)	M5	.217 (5,5)	.768 (19,5)	1.161 (29,5)	.315 (8)	.394 (10)
55901-4-1/8	5/32 (4)	1/8	.217 (5,5)	.846 (21,5)	1.220 (31)	.551 (14)	.394 (10)
55901-5-M5	5	M5	.217 (5,5)	.807 (20,5)	1.161 (29,5)	.315 (8)	.492 (12,5)
55901-5-1/8	5	1/8	.217 (5,5)	.886 (22,5)	1.220 (31)	.551 (14)	.492 (12,5)
55901-5-1/4	5	1/4	.276 (7)	.984 (25)	1.437 (36,5)	.669 (17)	.492 (12,5)
55901-6-M5	6	M5	.217 (5,5)	.827 (21)	1.161 (29,5)	.315 (8)	.492 (12,5)
55901-6-1/8	6	1/8	.217 (5,5)	.906 (23)	1.220 (31)	.551 (14)	.492 (12,5)
55901-6-1/4	6	1/4	.276 (7)	1.004 (25,5)	1.437 (36,5)	.669 (17)	.492 (12,5)
55901-8-1/8	5/16 (8)	1/8	.217 (5,5)	.925 (23,5)	1.220 (31)	.551 (14)	.551 (14)
55901-8-1/4	5/16 (8)	1/4	.276 (7)	1.024 (26)	1.437 (36,5)	.669 (17)	.551 (14)
55901-8-3/8	5/16 (8)	3/8	.335 (8,5)	1.083 (27,5)	1.673 (42,5)	.787 (20)	.551 (14)
55901-10-3/8	10	3/8	.335 (8,5)	1.201 (30,5)	1.673 (42,5)	.787 (20)	.669 (17)
55901-12-3/8	12	3/8	.335 (8,5)	1.280 (32,5)	1.673 (42,5)	.787 (20)	.846 (21,5)
55901-12-1/2	12	1/2	.394 (10)	1.378 (35)	1.850 (47)	.945 (24)	.846 (21,5)

55910

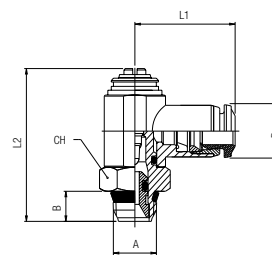
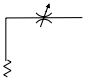
METRIC TUBE FLOW CONTROL (IN)



Part No.	Tube	A	B	L1	L2	CH	D
55910-4-M5	5/32 (4)	M5	.217 (5,5)	.768 (19,5)	1.161 (29,5)	.315 (8)	.394 (10)
55910-4-1/8	5/32 (4)	1/8	.217 (5,5)	.846 (21,5)	1.220 (31)	.551 (14)	.394 (10)
55910-5-M5	5	M5	.217 (5,5)	.807 (20,5)	1.161 (29,5)	.315 (8)	.492 (12,5)
55910-5-1/8	5	1/8	.217 (5,5)	.886 (22,5)	1.220 (31)	.551 (14)	.492 (12,5)
55910-5-1/4	5	1/4	.276 (7)	.984 (25)	1.437 (36,5)	.669 (17)	.492 (12,5)
55910-6-M5	6	M5	.217 (5,5)	.827 (21)	1.161 (29,5)	.315 (8)	.492 (12,5)
55910-6-1/8	6	1/8	.217 (5,5)	.906 (23)	1.220 (31)	.551 (14)	.492 (12,5)
55910-6-1/4	6	1/4	.276 (7)	1.004 (25,5)	1.437 (36,5)	.669 (17)	.492 (12,5)
55910-8-1/8	5/16 (8)	1/8	.217 (5,5)	.925 (23,5)	1.220 (31)	.551 (14)	.551 (14)
55910-8-1/4	5/16 (8)	1/4	.276 (7)	1.024 (26)	1.437 (36,5)	.669 (17)	.551 (14)
55910-8-3/8	5/16 (8)	3/8	.335 (8,5)	1.083 (27,5)	1.673 (42,5)	.787 (20)	.551 (14)
55910-10-3/8	10	3/8	.335 (8,5)	1.201 (30,5)	1.673 (42,5)	.787 (20)	.669 (17)
55910-12-3/8	12	3/8	.335 (8,5)	1.280 (32,5)	1.673 (42,5)	.787 (20)	.846 (21,5)
55910-12-1/2	12	1/2	.394 (10)	1.378 (35)	1.850 (47)	.945 (24)	.846 (21,5)

55920

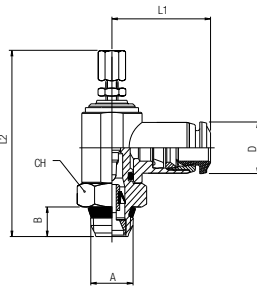
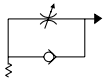
METRIC TUBE NEEDLE VALVE



Part No.	Tube	A	B	L1	L2	CH	D
55920-4-M5	5/32 (4)	M5	.217 (5,5)	.768 (19,5)	1.161 (29,5)	.315 (8)	.394 (10)
55920-4-1/8	5/32 (4)	1/8	.217 (5,5)	.846 (21,5)	1.220 (31)	.551 (14)	.394 (10)
55920-5-M5	5	M5	.217 (5,5)	.807 (20,5)	1.161 (29,5)	.315 (8)	.492 (12,5)
55920-5-1/8	5	1/8	.217 (5,5)	.886 (22,5)	1.220 (31)	.551 (14)	.492 (12,5)
55920-5-1/4	5	1/4	.276 (7)	.984 (25)	1.437 (36,5)	.669 (17)	.492 (12,5)
55920-6-M5	6	M5	.217 (5,5)	.827 (21)	1.161 (29,5)	.315 (8)	.492 (12,5)
55920-6-1/8	6	1/8	.217 (5,5)	.906 (23)	1.220 (31)	.551 (14)	.492 (12,5)
55920-6-1/4	6	1/4	.276 (7)	1.004 (25,5)	1.437 (36,5)	.669 (17)	.492 (12,5)
55920-8-1/8	5/16 (8)	1/8	.217 (5,5)	.925 (23,5)	1.220 (31)	.551 (14)	.551 (14)
55920-8-1/4	5/16 (8)	1/4	.276 (7)	1.024 (26)	1.437 (36,5)	.669 (17)	.551 (14)
55920-8-3/8	5/16 (8)	3/8	.335 (8,5)	1.083 (27,5)	1.673 (42,5)	.787 (20)	.551 (14)
55920-10-3/8	10	3/8	.335 (8,5)	1.201 (30,5)	1.673 (42,5)	.787 (20)	.669 (17)
55920-12-3/8	12	3/8	.335 (8,5)	1.280 (32,5)	1.673 (42,5)	.787 (20)	.846 (21,5)
55920-12-1/2	12	1/2	.394 (10)	1.378 (35)	1.850 (47)	.945 (24)	.846 (21,5)

55905

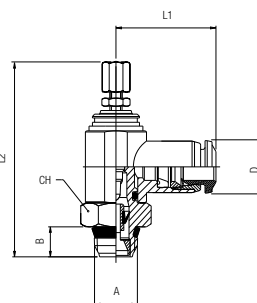
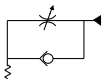
METRIC TUBE FLOW CONTROL (OUT)



Part No.	Tube	A	B	L1	L2 min	L2 max	CH	D
55905-4-M5	5/32 (4)	M5	.217 (5,5)	.768 (19,5)	1.516 (38,5)	1.673 (42,5)	.315 (8)	.394 (10)
55905-4-1/8	5/32 (4)	1/8	.217 (5,5)	.846 (21,5)	1.732 (44)	1.929 (49)	.551 (14)	.394 (10)
55905-5-M5	5	M5	.217 (5,5)	.807 (20,5)	1.516 (38,5)	1.673 (42,5)	.315 (8)	.492 (12,5)
55905-5-1/8	5	1/8	.217 (5,5)	.886 (22,5)	1.732 (44)	1.929 (49)	.551 (14)	.492 (12,5)
55905-5-1/4	5	1/4	.276 (7)	.984 (25)	1.909 (48,5)	2.165 (55)	.669 (17)	.492 (12,5)
55905-6-M5	6	M5	.217 (5,5)	.827 (21)	1.516 (38,5)	1.673 (42,5)	.315 (8)	.492 (12,5)
55905-6-1/8	6	1/8	.217 (5,5)	.906 (23)	1.732 (44)	1.929 (49)	.551 (14)	.492 (12,5)
55905-6-1/4	6	1/4	.276 (7)	1.004 (25,5)	1.909 (48,5)	2.165 (55)	.669 (17)	.492 (12,5)
55905-8-1/8	5/16 (8)	1/8	.217 (5,5)	.925 (23,5)	1.732 (44)	1.929 (49)	.551 (14)	.551 (14)
55905-8-1/4	5/16 (8)	1/4	.276 (7)	1.024 (26)	1.909 (48,5)	2.165 (55)	.669 (17)	.551 (14)
55905-8-3/8	5/16 (8)	3/8	.335 (8,5)	1.083 (27,5)	2.205 (56)	2.559 (65)	.787 (20)	.551 (14)
55905-10-3/8	10	3/8	.335 (8,5)	1.201 (30,5)	2.205 (56)	2.559 (65)	.787 (20)	.669 (17)
55905-12-3/8	12	3/8	.335 (8,5)	1.280 (32,5)	2.205 (56)	2.559 (65)	.787 (20)	.846 (21,5)
55905-12-1/2	12	1/2	.394 (10)	1.378 (35)	2.441 (62)	2.717 (69)	.945 (24)	.846 (21,5)

55915

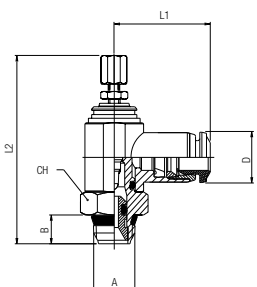
METRIC TUBE FLOW CONTROL (IN)



Part No.	Tube	A	B	L1	L2 min	L2 max	CH	D
55915-4-M5	5/32 (4)	M5	.217 (5,5)	.768 (19,5)	1.516 (38,5)	1.673 (42,5)	.315 (8)	.394 (10)
55915-4-1/8	5/32 (4)	1/8	.217 (5,5)	.846 (21,5)	1.732 (44)	1.929 (49)	.551 (14)	.394 (10)
55915-5-M5	5	M5	.217 (5,5)	.807 (20,5)	1.516 (38,5)	1.673 (42,5)	.315 (8)	.492 (12,5)
55915-5-1/8	5	1/8	.217 (5,5)	.886 (22,5)	1.732 (44)	1.929 (49)	.551 (14)	.492 (12,5)
55915-5-1/4	5	1/4	.276 (7)	.984 (25)	1.909 (48,5)	2.165 (55)	.669 (17)	.492 (12,5)
55915-6-M5	6	M5	.217 (5,5)	.827 (21)	1.516 (38,5)	1.673 (42,5)	.315 (8)	.492 (12,5)
55915-6-1/8	6	1/8	.217 (5,5)	.906 (23)	1.732 (44)	1.929 (49)	.551 (14)	.492 (12,5)
55915-6-1/4	6	1/4	.276 (7)	1.004 (25,5)	1.909 (48,5)	2.165 (55)	.669 (17)	.492 (12,5)
55915-8-1/8	5/16 (8)	1/8	.217 (5,5)	.925 (23,5)	1.732 (44)	1.929 (49)	.551 (14)	.551 (14)
55915-8-1/4	5/16 (8)	1/4	.276 (7)	1.024 (26)	1.909 (48,5)	2.165 (55)	.669 (17)	.551 (14)
55915-8-3/8	5/16 (8)	3/8	.335 (8,5)	1.083 (27,5)	2.205 (56)	2.559 (65)	.787 (20)	.551 (14)
55915-10-3/8	10	3/8	.335 (8,5)	1.201 (30,5)	2.205 (56)	2.559 (65)	.787 (20)	.669 (17)
55915-12-3/8	12	3/8	.335 (8,5)	1.280 (32,5)	2.205 (56)	2.559 (65)	.787 (20)	.846 (21,5)
55915-12-1/2	12	1/2	.394 (10)	1.378 (35)	2.441 (62)	2.717 (69)	.945 (24)	.846 (21,5)

55925

METRIC TUBE NEEDLE VALVE



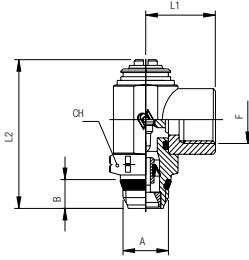
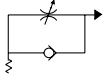
Part No.	Tube	A	B	L1	L2 min	L2 max	CH	D
55925-4-M5	5/32 (4)	M5	.217 (5,5)	.768 (19,5)	1.516 (38,5)	1.673 (42,5)	.315 (8)	.394 (10)
55925-4-1/8	5/32 (4)	1/8	.217 (5,5)	.846 (21,5)	1.732 (44)	1.929 (49)	.551 (14)	.394 (10)
55925-5-M5	5	M5	.217 (5,5)	.807 (20,5)	1.516 (38,5)	1.673 (42,5)	.315 (8)	.492 (12,5)
55925-5-1/8	5	1/8	.217 (5,5)	.886 (22,5)	1.732 (44)	1.929 (49)	.551 (14)	.492 (12,5)
55925-5-1/4	5	1/4	.276 (7)	.984 (25)	1.909 (48,5)	2.165 (55)	.669 (17)	.492 (12,5)
55925-6-M5	6	M5	.217 (5,5)	.827 (21)	1.516 (38,5)	1.673 (42,5)	.315 (8)	.492 (12,5)
55925-6-1/8	6	1/8	.217 (5,5)	.906 (23)	1.732 (44)	1.929 (49)	.551 (14)	.492 (12,5)
55925-6-1/4	6	1/4	.276 (7)	1.004 (25,5)	1.909 (48,5)	2.165 (55)	.669 (17)	.492 (12,5)
55925-8-1/8	5/16 (8)	1/8	.217 (5,5)	.925 (23,5)	1.732 (44)	1.929 (49)	.551 (14)	.551 (14)
55925-8-1/4	5/16 (8)	1/4	.276 (7)	1.024 (26)	1.909 (48,5)	2.165 (55)	.669 (17)	.551 (14)
55925-8-3/8	5/16 (8)	3/8	.335 (8,5)	1.083 (27,5)	2.205 (56)	2.559 (65)	.787 (20)	.551 (14)
55925-10-3/8	10	3/8	.335 (8,5)	1.201 (30,5)	2.205 (56)	2.559 (65)	.787 (20)	.669 (17)
55925-12-3/8	12	3/8	.335 (8,5)	1.280 (32,5)	2.205 (56)	2.559 (65)	.787 (20)	.846 (21,5)
55925-12-1/2	12	1/2	.394 (10)	1.378 (35)	2.441 (62)	2.717 (69)	.945 (24)	.846 (21,5)

88952

FEMALE NPTF FLOW CONTROL (OUT)



Part No.	F NPTF	A	B	L1	L2	CH
88952-32-32	10/32 UNF	10/32	.157 (4)	.394 (10)	.945 (24)	.315 (8)
88952-02-02	1/8	1/8	.217 (5,5)	.650 (16,5)	1.181 (30,5)	.551 (14)
88952-04-04	1/4	1/4	.276 (7)	.866 (22)	1.417 (36)	.669 (17)
88952-06-06	3/8	3/8	.295 (7,5)	1.043 (26,5)	1.614 (26,5)	.787 (20)

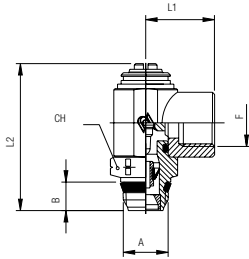
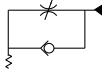


88962

FEMALE NPTF FLOW CONTROL (IN)



Part No.	F NPTF	A	B	L1	L2	CH
88962-32-32	10/32 UNF	10/32	.157 (4)	.394 (10)	.945 (24)	.315 (8)
88962-02-02	1/8	1/8	.217 (5,5)	.650 (16,5)	1.181 (30,5)	.551 (14)
88962-04-04	1/4	1/4	.276 (7)	.866 (22)	1.417 (36)	.669 (17)
88962-06-06	3/8	3/8	.295 (7,5)	1.043 (26,5)	1.614 (26,5)	.787 (20)

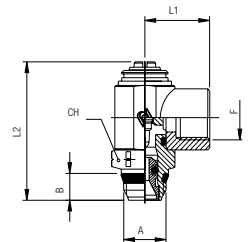


88972

FEMALE NPTF NEEDLE VALVE

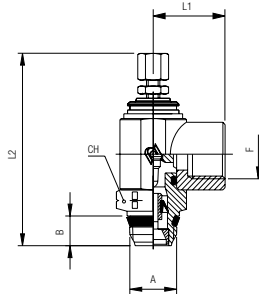
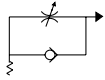


Part No.	F NPTF	A	B	L1	L2	CH
88972-32-32	10/32 UNF	10/32	.157 (4)	.394 (10)	.945 (24)	.315 (8)
88972-02-02	1/8	1/8	.217 (5,5)	.650 (16,5)	1.181 (30,5)	.551 (14)
88972-04-04	1/4	1/4	.276 (7)	.866 (22)	1.417 (36)	.669 (17)
88972-06-06	3/8	3/8	.295 (7,5)	1.043 (26,5)	1.614 (26,5)	.787 (20)



88957

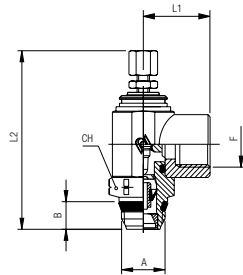
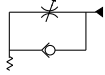
FEMALE NPTF FLOW CONTROL (OUT)



Part No.	F NPTF	A	B	L1	L2 min	L2 max	CH
88957-32-32	10/32 UNF	10/32	.157 (4)	.394 (10)	1.299 (33)	1.477 (37,5)	.315 (8)
88957-02-02	1/8	1/8	.217 (5,5)	.650 (16,5)	1.614 (41)	1.830 (46,5)	.551 (14)
88957-04-04	1/4	1/4	.276 (7)	.866 (22)	1.850 (47)	2.086 (53)	.669 (17)
88957-06-06	3/8	3/8	.295 (7,5)	1.043 (26,5)	2.480 (63)	2.480 (63)	.787 (20)

88967

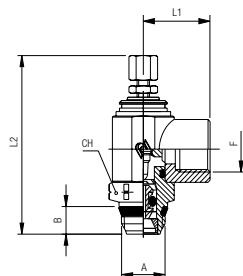
FEMALE NPTF FLOW CONTROL (IN)



Part No.	F NPTF	A	B	L1	L2 min	L2 max	CH
88967-32-32	10/32 UNF	10/32	.157 (4)	.394 (10)	1.299 (33)	1.477 (37,5)	.315 (8)
88967-02-02	1/8	1/8	.217 (5,5)	.650 (16,5)	1.614 (41)	1.830 (46,5)	.551 (14)
88967-04-04	1/4	1/4	.276 (7)	.866 (22)	1.850 (47)	2.086 (53)	.669 (17)
88967-06-06	3/8	3/8	.295 (7,5)	1.043 (26,5)	2.205 (56)	2.480 (63)	.787 (20)

88977

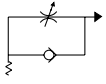
FEMALE NPTF NEEDLE VALVE



Part No.	F NPTF	A	B	L1	L2 min	L2 max	CH
88977-32-32	10/32 UNF	10/32	.157 (4)	.394 (10)	1.299 (33)	1.477 (37,5)	.315 (8)
88977-02-02	1/8	1/8	.217 (5,5)	.650 (16,5)	1.614 (41)	1.830 (46,5)	.551 (14)
88977-04-04	1/4	1/4	.276 (7)	.866 (22)	1.850 (47)	2.086 (53)	.669 (17)
88977-06-06	3/8	3/8	.295 (7,5)	1.043 (26,5)	2.480 (63)	2.480 (63)	.787 (20)

89903

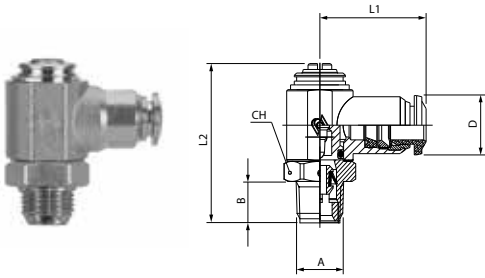
INCH TUBE FLOW CONTROL (OUT)



PTF

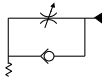


Part No.	Tube	A (PTF)	B	L1	L2	CH	D
89903-02-02	1/8	1/8	.240 (6,1)	.827 (21)	1.181 (30,5)	.551 (14)	.394 (10)
89903-53-02	5/32	1/8	.240 (6,1)	.827 (21)	1.181 (30,5)	.551 (14)	.394 (10)
89903-04-02	1/4	1/8	.240 (6,1)	.866 (22)	1.181 (30,5)	.551 (14)	.492 (12,5)
89903-04-04	1/4	1/4	.358 (9,1)	.984 (25)	1.417 (36)	.669 (17)	.492 (12,5)
89903-06-04	3/8	1/4	.358 (9,1)	1.181 (30,5)	1.614 (41)	.787 (20)	.689 (17,5)



89913

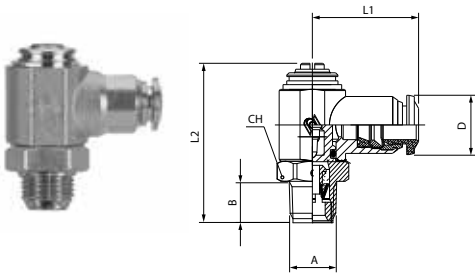
INCH TUBE FLOW CONTROL (IN)



PTF



Part No.	Tube	A (PTF)	B	L1	L2	CH	D
89913-02-02	1/8	1/8	.240 (6,1)	.827 (21)	1.181 (30,5)	.551 (14)	.394 (10)
89913-53-02	5/32	1/8	.240 (6,1)	.827 (21)	1.181 (30,5)	.551 (14)	.394 (10)
89913-04-02	1/4	1/8	.240 (6,1)	.866 (22)	1.181 (30,5)	.551 (14)	.492 (12,5)
89913-04-04	1/4	1/4	.358 (9,1)	.984 (25)	1.417 (36)	.669 (17)	.492 (12,5)
89913-06-04	3/8	1/4	.358 (9,1)	1.181 (30,5)	1.614 (41)	.787 (20)	.689 (17,5)



89923

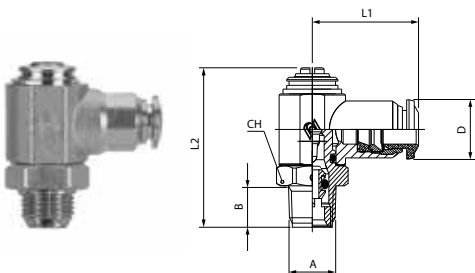
INCH TUBE NEEDLE VALVE



PTF

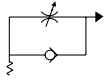


Part No.	Tube	A (PTF)	B	L1	L2	CH	D
89923-02-02	1/8	1/8	.240 (6,1)	.827 (21)	1.181 (30,5)	.551 (14)	.394 (10)
89923-53-02	5/32	1/8	.240 (6,1)	.827 (21)	1.181 (30,5)	.551 (14)	.394 (10)
89923-04-02	1/4	1/8	.240 (6,1)	.866 (22)	1.181 (30,5)	.551 (14)	.492 (12,5)
89923-04-04	1/4	1/4	.358 (9,1)	.984 (25)	1.417 (36)	.669 (17)	.492 (12,5)
89923-06-04	3/8	1/4	.358 (9,1)	1.181 (30,5)	1.614 (41)	.787 (20)	.689 (17,5)



89907

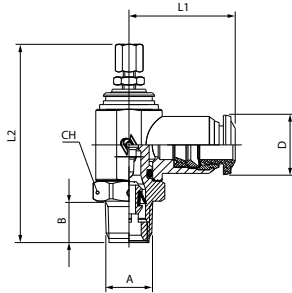
INCH TUBE FLOW CONTROL (OUT)



PTF 

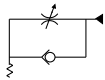
C 

Part No.	Tube	A (PTF)	B	L1	L2 min	L2 max	CH	D
89907-02-02	1/8	1/8	.240 (6,1)	.827 (21)	1.614 (41)	1.830 (46,5)	.551 (14)	.394 (10)
89907-53-02	5/32	1/8	.240 (6,1)	.827 (21)	1.614 (41)	1.830 (46,5)	.551 (14)	.394 (10)
89907-04-02	1/4	1/8	.240 (6,1)	.866 (22)	1.614 (41)	1.830 (46,5)	.551 (14)	.492 (12,5)
89907-04-04	1/4	1/4	.358 (9,1)	.984 (25)	1.850 (47)	2.086 (53)	.669 (17)	.492 (12,5)
89907-06-04	3/8	1/4	.358 (9,1)	1.181 (30,5)	2.205 (56)	2.480 (63)	.787 (20)	.689 (17,5)



89917

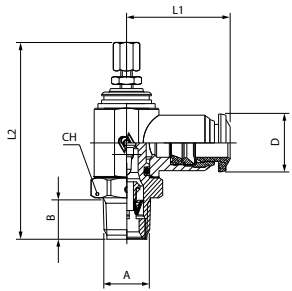
INCH TUBE FLOW CONTROL (IN)



PTF 

V 

Part No.	Tube	A (PTF)	B	L1	L2 min	L2 max	CH	D
89917-02-02	1/8	1/8	.240 (6,1)	.827 (21)	1.614 (41)	1.830 (46,5)	.551 (14)	.394 (10)
89917-53-02	5/32	1/8	.240 (6,1)	.827 (21)	1.614 (41)	1.830 (46,5)	.551 (14)	.394 (10)
89917-04-02	1/4	1/8	.240 (6,1)	.866 (22)	1.614 (41)	1.830 (46,5)	.551 (14)	.492 (12,5)
89917-04-04	1/4	1/4	.358 (9,1)	.984 (25)	1.850 (47)	2.086 (53)	.669 (17)	.492 (12,5)
89917-06-04	3/8	1/4	.358 (9,1)	1.181 (30,5)	2.205 (56)	2.480 (63)	.787 (20)	.689 (17,5)



89927

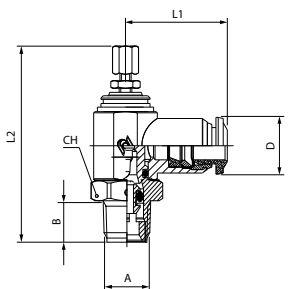
INCH TUBE NEEDLE VALVE



PTF 

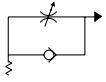
B 

Part No.	Tube	A (PTF)	B	L1	L2 min	L2 max	CH	D
89927-02-02	1/8	1/8	.240 (6,1)	.827 (21)	1.614 (41)	1.830 (46,5)	.551 (14)	.394 (10)
89927-53-02	5/32	1/8	.240 (6,1)	.827 (21)	1.614 (41)	1.830 (46,5)	.551 (14)	.394 (10)
89927-04-02	1/4	1/8	.240 (6,1)	.866 (22)	1.614 (41)	1.830 (46,5)	.551 (14)	.492 (12,5)
89927-04-04	1/4	1/4	.358 (9,1)	.984 (25)	1.850 (47)	2.086 (53)	.669 (17)	.492 (12,5)
89927-06-04	3/8	1/4	.358 (9,1)	1.181 (30,5)	2.205 (56)	2.480 (63)	.787 (20)	.689 (17,5)

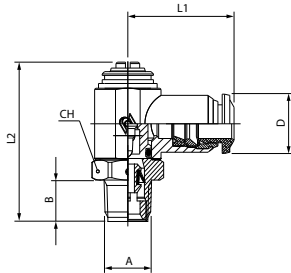


87903

INCH TUBE FLOW CONTROL (OUT)

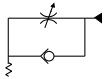


Part No.	Tube	A (PTF)	B	L1	L2	CH	D
87903-02-02	1/8	1/8	.240 (6,1)	.827 (21)	1.181 (30,5)	.551 (14)	.394 (10)
87903-53-02	5/32	1/8	.240 (6,1)	.827 (21)	1.181 (30,5)	.551 (14)	.394 (10)
87903-04-02	1/4	1/8	.240 (6,1)	.866 (22)	1.181 (30,5)	.551 (14)	.492 (12,5)
87903-04-04	1/4	1/4	.358 (9,1)	.984 (25)	1.417 (36)	.669 (17)	.492 (12,5)
87903-06-04	3/8	1/4	.358 (9,1)	1.181 (30,5)	1.614 (41)	.787 (20)	.689 (17,5)

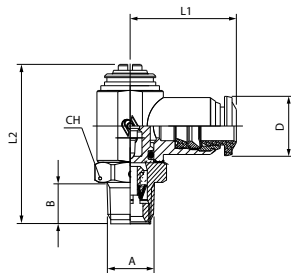


87913

INCH TUBE FLOW CONTROL (IN)



Part No.	Tube	A (PTF)	B	L1	L2	CH	D
87913-02-02	1/8	1/8	.240 (6,1)	.827 (21)	1.181 (30,5)	.551 (14)	.394 (10)
87913-53-02	5/32	1/8	.240 (6,1)	.827 (21)	1.181 (30,5)	.551 (14)	.394 (10)
87913-04-02	1/4	1/8	.240 (6,1)	.866 (22)	1.181 (30,5)	.551 (14)	.492 (12,5)
87913-04-04	1/4	1/4	.358 (9,1)	.984 (25)	1.417 (36)	.669 (17)	.492 (12,5)
87913-06-04	3/8	1/4	.358 (9,1)	1.181 (30,5)	1.614 (41)	.787 (20)	.689 (17,5)

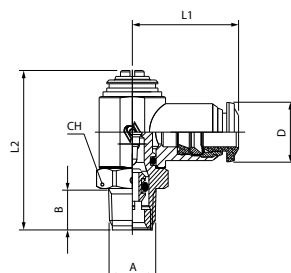


87923

INCH TUBE NEEDLE VALVE

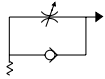


Part No.	Tube	A (PTF)	B	L1	L2	CH	D
87923-02-02	1/8	1/8	.240 (6,1)	.827 (21)	1.181 (30,5)	.551 (14)	.394 (10)
87923-53-02	5/32	1/8	.240 (6,1)	.827 (21)	1.181 (30,5)	.551 (14)	.394 (10)
87923-04-02	1/4	1/8	.240 (6,1)	.866 (22)	1.181 (30,5)	.551 (14)	.492 (12,5)
87923-04-04	1/4	1/4	.358 (9,1)	.984 (25)	1.417 (36)	.669 (17)	.492 (12,5)
87923-06-04	3/8	1/4	.358 (9,1)	1.181 (30,5)	1.614 (41)	.787 (20)	.689 (17,5)



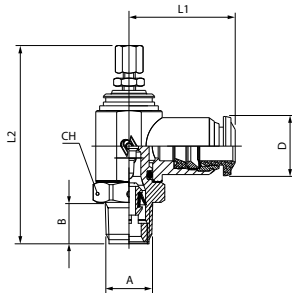
87907

INCH TUBE FLOW CONTROL (OUT)



PTF 

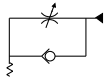
C 



Part No.	Tube	A (PTF)	B	L1	L2 min	L2 max	CH	D
87907-02-02	1/8	1/8	.240 (6,1)	.827 (21)	1.614 (41)	1.830 (46,5)	.551 (14)	.394 (10)
87907-53-02	5/32	1/8	.240 (6,1)	.827 (21)	1.614 (41)	1.830 (46,5)	.551 (14)	.394 (10)
87907-04-02	1/4	1/8	.240 (6,1)	.866 (22)	1.614 (41)	1.830 (46,5)	.551 (14)	.492 (12,5)
87907-04-04	1/4	1/4	.358 (9,1)	.984 (25)	1.850 (47)	2.086 (53)	.669 (17)	.492 (12,5)
87907-06-04	3/8	1/4	.358 (9,1)	1.181 (30,5)	2.205 (56)	2.480 (63)	.787 (20)	.689 (17,5)

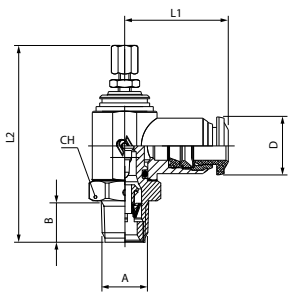
87917

INCH TUBE FLOW CONTROL (IN)



PTF 

V 



Part No.	Tube	A (PTF)	B	L1	L2 min	L2 max	CH	D
87917-02-02	1/8	1/8	.240 (6,1)	.827 (21)	1.614 (41)	1.830 (46,5)	.551 (14)	.394 (10)
87917-53-02	5/32	1/8	.240 (6,1)	.827 (21)	1.614 (41)	1.830 (46,5)	.551 (14)	.394 (10)
87917-04-02	1/4	1/8	.240 (6,1)	.866 (22)	1.614 (41)	1.830 (46,5)	.551 (14)	.492 (12,5)
87917-04-04	1/4	1/4	.358 (9,1)	.984 (25)	1.850 (47)	2.086 (53)	.669 (17)	.492 (12,5)
87917-06-04	3/8	1/4	.358 (9,1)	1.181 (30,5)	2.205 (56)	2.480 (63)	.787 (20)	.689 (17,5)

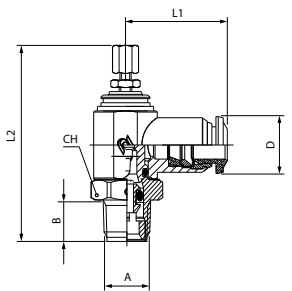
87927

INCH TUBE NEEDLE VALVE



PTF 

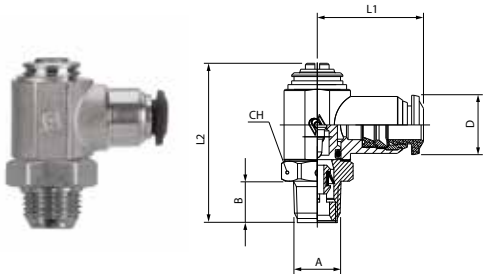
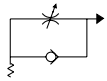
B 



Part No.	Tube	A (PTF)	B	L1	L2 min	L2 max	CH	D
87927-02-02	1/8	1/8	.240 (6,1)	.827 (21)	1.614 (41)	1.830 (46,5)	.551 (14)	.394 (10)
87927-53-02	5/32	1/8	.240 (6,1)	.827 (21)	1.614 (41)	1.830 (46,5)	.551 (14)	.394 (10)
87927-04-02	1/4	1/8	.240 (6,1)	.866 (22)	1.614 (41)	1.830 (46,5)	.551 (14)	.492 (12,5)
87927-04-04	1/4	1/4	.358 (9,1)	.984 (25)	1.850 (47)	2.086 (53)	.669 (17)	.492 (12,5)
87927-06-04	3/8	1/4	.358 (9,1)	1.181 (30,5)	2.205 (56)	2.480 (63)	.787 (20)	.689 (17,5)

50903N

METRIC TUBE FLOW CONTROL (OUT)



PTF

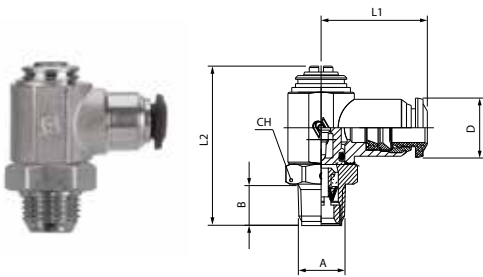
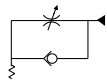


C

Part No.	Tube	A (PTF)	B	L1	L2	CH	D
50903N-4-1/8	5/32 (4)	1/8	.240 (6,1)	.827 (21)	1.220 (31)	.551 (14)	.394 (10)
50903N-5-1/8	5	1/8	.240 (6,1)	.846 (21,5)	1.220 (31)	.551 (14)	.492 (12,5)
50903N-5-1/4	5	1/4	.358 (9,1)	.965 (24,5)	1.437 (36,5)	.669 (17)	.492 (12,5)
50903N-6-1/8	6	1/8	.240 (6,1)	.886 (22,5)	1.220 (31)	.551 (14)	.492 (12,5)
50903N-6-1/4	6	1/4	.358 (9,1)	.984 (25)	1.437 (36,5)	.669 (17)	.492 (12,5)
50903N-8-1/8	5/16 (8)	1/8	.240 (6,1)	.945 (24)	1.220 (31)	.551 (14)	.551 (14)
50903N-8-1/4	5/16 (8)	1/4	.358 (9,1)	1.024 (26)	1.437 (36,5)	.669 (17)	.551 (14)

50913N

METRIC TUBE FLOW CONTROL (IN)



PTF

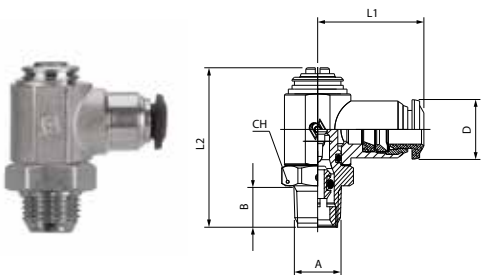


V

Part No.	Tube	A (PTF)	B	L1	L2	CH	D
50913N-4-1/8	5/32 (4)	1/8	.240 (6,1)	.827 (21)	1.220 (31)	.551 (14)	.394 (10)
50913N-5-1/8	5	1/8	.240 (6,1)	.846 (21,5)	1.220 (31)	.551 (14)	.492 (12,5)
50913N-5-1/4	5	1/4	.358 (9,1)	.965 (24,5)	1.437 (36,5)	.669 (17)	.492 (12,5)
50913N-6-1/8	6	1/8	.240 (6,1)	.886 (22,5)	1.220 (31)	.551 (14)	.492 (12,5)
50913N-6-1/4	6	1/4	.358 (9,1)	.984 (25)	1.437 (36,5)	.669 (17)	.492 (12,5)
50913N-8-1/8	5/16 (8)	1/8	.240 (6,1)	.945 (24)	1.220 (31)	.551 (14)	.551 (14)
50913N-8-1/4	5/16 (8)	1/4	.358 (9,1)	1.024 (26)	1.437 (36,5)	.669 (17)	.551 (14)

50923N

METRIC TUBE NEEDLE VALVE



PTF

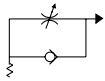


B

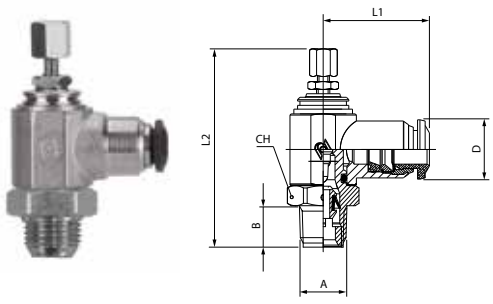
Part No.	Tube	A (PTF)	B	L1	L2	CH	D
50923N-4-1/8	5/32 (4)	1/8	.240 (6,1)	.827 (21)	1.220 (31)	.551 (14)	.394 (10)
50923N-5-1/8	5	1/8	.240 (6,1)	.846 (21,5)	1.220 (31)	.551 (14)	.492 (12,5)
50923N-5-1/4	5	1/4	.358 (9,1)	.965 (24,5)	1.437 (36,5)	.669 (17)	.492 (12,5)
50923N-6-1/8	6	1/8	.240 (6,1)	.886 (22,5)	1.220 (31)	.551 (14)	.492 (12,5)
50923N-6-1/4	6	1/4	.358 (9,1)	.984 (25)	1.437 (36,5)	.669 (17)	.492 (12,5)
50923N-8-1/8	5/16 (8)	1/8	.240 (6,1)	.945 (24)	1.220 (31)	.551 (14)	.551 (14)
50923N-8-1/4	5/16 (8)	1/4	.358 (9,1)	1.024 (26)	1.437 (36,5)	.669 (17)	.551 (14)

50907N

METRIC TUBE FLOW CONTROL (OUT)



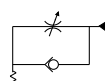
PTF 
C



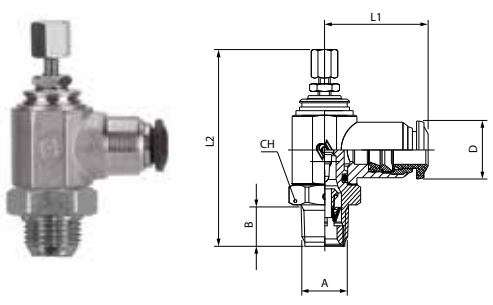
Part No.	Tube	A (PTF)	B	L1	L2 min	L2 max	CH	D
50907N-4-1/8	5/32 (4)	1/8	.240 (6,1)	.827 (21)	1.732 (44)	1.929 (49)	.551 (14)	.394 (10)
50907N-5-1/8	5	1/8	.240 (6,1)	.846 (21,5)	1.732 (44)	1.929 (49)	.551 (14)	.492 (12,5)
50907N-5-1/4	5	1/4	.358 (9,1)	.965 (24,5)	1.909 (48,5)	2.165 (55)	.669 (17)	.492 (12,5)
50907N-6-1/8	6	1/8	.240 (6,1)	.886 (22,5)	1.732 (44)	1.929 (49)	.551 (14)	.492 (12,5)
50907N-6-1/4	6	1/4	.358 (9,1)	.984 (25)	1.909 (48,5)	2.165 (55)	.669 (17)	.492 (12,5)
50907N-8-1/8	5/16 (8)	1/8	.240 (6,1)	.945 (24)	1.732 (44)	1.929 (49)	.551 (14)	.551 (14)
50907N-8-1/4	5/16 (8)	1/4	.358 (9,1)	1.024 (26)	1.909 (48,5)	2.165 (55)	.669 (17)	.551 (14)

50917N

METRIC TUBE FLOW CONTROL (IN)



PTF 
V



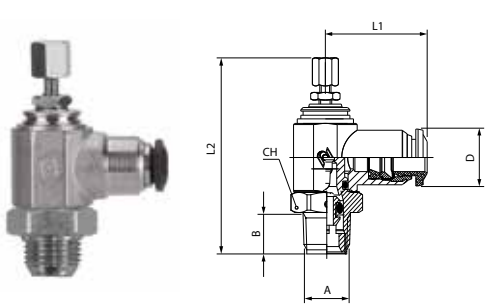
Part No.	Tube	A (PTF)	B	L1	L2 min	L2 max	CH	D
50917N-4-1/8	5/32 (4)	1/8	.240 (6,1)	.827 (21)	1.732 (44)	1.929 (49)	.551 (14)	.394 (10)
50917N-5-1/8	5	1/8	.240 (6,1)	.846 (21,5)	1.732 (44)	1.929 (49)	.551 (14)	.492 (12,5)
50917N-5-1/4	5	1/4	.358 (9,1)	.965 (24,5)	1.909 (48,5)	2.165 (55)	.669 (17)	.492 (12,5)
50917N-6-1/8	6	1/8	.240 (6,1)	.886 (22,5)	1.732 (44)	1.929 (49)	.551 (14)	.492 (12,5)
50917N-6-1/4	6	1/4	.358 (9,1)	.984 (25)	1.909 (48,5)	2.165 (55)	.669 (17)	.492 (12,5)
50917N-8-1/8	5/16 (8)	1/8	.240 (6,1)	.945 (24)	1.732 (44)	1.929 (49)	.551 (14)	.551 (14)
50917N-8-1/4	5/16 (8)	1/4	.358 (9,1)	1.024 (26)	1.909 (48,5)	2.165 (55)	.669 (17)	.551 (14)

50927N

METRIC TUBE NEEDLE VALVE



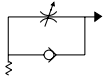
PTF 
B



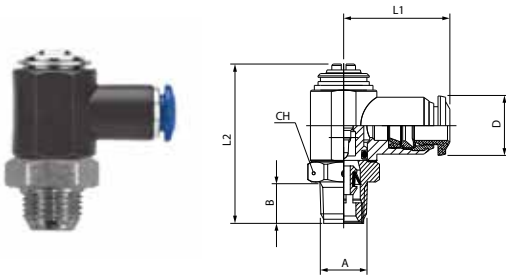
Part No.	Tube	A (PTF)	B	L1	L2 min	L2 max	CH	D
50927N-4-1/8	5/32 (4)	1/8	.240 (6,1)	.827 (21)	1.732 (44)	1.929 (49)	.551 (14)	.394 (10)
50927N-5-1/8	5	1/8	.240 (6,1)	.846 (21,5)	1.732 (44)	1.929 (49)	.551 (14)	.492 (12,5)
50927N-5-1/4	5	1/4	.358 (9,1)	.965 (24,5)	1.909 (48,5)	2.165 (55)	.669 (17)	.492 (12,5)
50927N-6-1/8	6	1/8	.240 (6,1)	.886 (22,5)	1.732 (44)	1.929 (49)	.551 (14)	.492 (12,5)
50927N-6-1/4	6	1/4	.358 (9,1)	.984 (25)	1.909 (48,5)	2.165 (55)	.669 (17)	.492 (12,5)
50927N-8-1/8	5/16 (8)	1/8	.240 (6,1)	.945 (24)	1.732 (44)	1.929 (49)	.551 (14)	.551 (14)
50927N-8-1/4	5/16 (8)	1/4	.358 (9,1)	1.024 (26)	1.909 (48,5)	2.165 (55)	.669 (17)	.551 (14)

85903

INCH TUBE FLOW CONTROL (OUT)

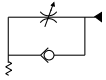


Part No.	Tube	A (PTF)	B	L1	L2	CH	D
85903-02-02	1/8	1/8	.240 (6,1)	.827 (21)	1.181 (30,5)	.551 (14)	.394 (10)
85903-53-02	5/32	1/8	.240 (6,1)	.827 (21)	1.181 (30,5)	.551 (14)	.394 (10)
85903-04-02	1/4	1/8	.240 (6,1)	.866 (22)	1.181 (30,5)	.551 (14)	.472 (12)
85903-04-04	1/4	1/4	.358 (9,1)	.984 (25)	1.417 (36)	.669 (17)	.472 (12)
85903-06-04	3/8	1/4	.358 (9,1)	1.181 (30,5)	1.614 (41)	.787 (20)	.669 (17)

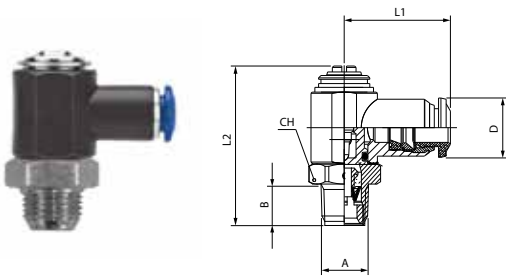


85913

INCH TUBE FLOW CONTROL (IN)



Part No.	Tube	A (PTF)	B	L1	L2	CH	D
85913-02-02	1/8	1/8	.240 (6,1)	.827 (21)	1.181 (30,5)	.551 (14)	.394 (10)
85913-53-02	5/32	1/8	.240 (6,1)	.827 (21)	1.181 (30,5)	.551 (14)	.394 (10)
85913-04-02	1/4	1/8	.240 (6,1)	.866 (22)	1.181 (30,5)	.551 (14)	.472 (12)
85913-04-04	1/4	1/4	.358 (9,1)	.984 (25)	1.417 (36)	.669 (17)	.472 (12)
85913-06-04	3/8	1/4	.358 (9,1)	1.181 (30,5)	1.614 (41)	.787 (20)	.669 (17)

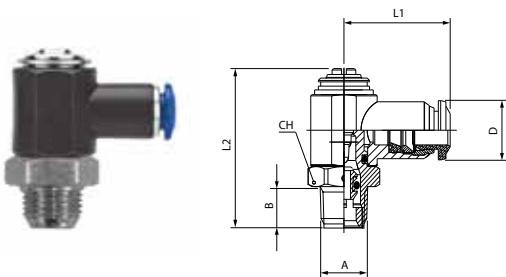


85923

INCH TUBE NEEDLE VALVE

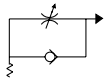


Part No.	Tube	A (PTF)	B	L1	L2	CH	D
85923-02-02	1/8	1/8	.240 (6,1)	.827 (21)	1.181 (30,5)	.551 (14)	.394 (10)
85923-53-02	5/32	1/8	.240 (6,1)	.827 (21)	1.181 (30,5)	.551 (14)	.394 (10)
85923-04-02	1/4	1/8	.240 (6,1)	.866 (22)	1.181 (30,5)	.551 (14)	.472 (12)
85923-04-04	1/4	1/4	.358 (9,1)	.984 (25)	1.417 (36)	.669 (17)	.472 (12)
85923-06-04	3/8	1/4	.358 (9,1)	1.181 (30,5)	1.614 (41)	.787 (20)	.669 (17)



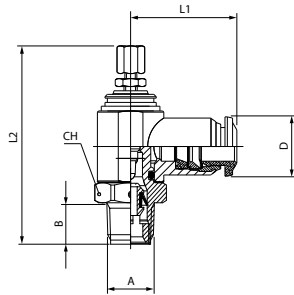
85907

INCH TUBE FLOW CONTROL (OUT)



PTF 

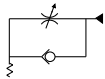
C 



Part No.	Tube	A (PTF)	B	L1	L2 min	L2 max	CH	D
85907-02-02	1/8	1/8	.240 (6,1)	.827 (21)	1.614 (41)	1.830 (46,5)	.551 (14)	.394 (10)
85907-53-02	5/32	1/8	.240 (6,1)	.827 (21)	1.614 (41)	1.830 (46,5)	.551 (14)	.394 (10)
85907-04-02	1/4	1/8	.240 (6,1)	.866 (22)	1.614 (41)	1.830 (46,5)	.551 (14)	.472 (12)
85907-04-04	1/4	1/4	.358 (9,1)	.984 (25)	1.850 (47)	2.086 (53)	.669 (17)	.472 (12)
85907-06-04	3/8	1/4	.358 (9,1)	1.181 (30,5)	2.205 (56)	2.480 (63)	.787 (20)	.669 (17)

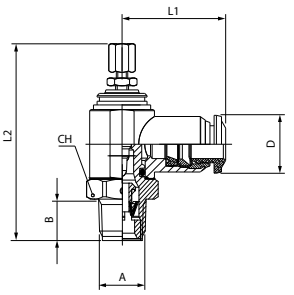
85917

INCH TUBE FLOW CONTROL (IN)



PTF 

V 



Part No.	Tube	A (PTF)	B	L1	L2 min	L2 max	CH	D
85917-02-02	1/8	1/8	.240 (6,1)	.827 (21)	1.614 (41)	1.830 (46,5)	.551 (14)	.394 (10)
85917-53-02	5/32	1/8	.240 (6,1)	.827 (21)	1.614 (41)	1.830 (46,5)	.551 (14)	.394 (10)
85917-04-02	1/4	1/8	.240 (6,1)	.866 (22)	1.614 (41)	1.830 (46,5)	.551 (14)	.472 (12)
85917-04-04	1/4	1/4	.358 (9,1)	.984 (25)	1.850 (47)	2.086 (53)	.669 (17)	.472 (12)
85917-06-04	3/8	1/4	.358 (9,1)	1.181 (30,5)	2.205 (56)	2.480 (63)	.787 (20)	.669 (17)

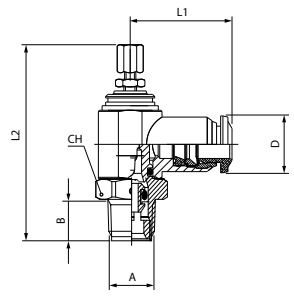
85927

INCH TUBE NEEDLE VALVE



PTF 

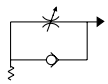
B 



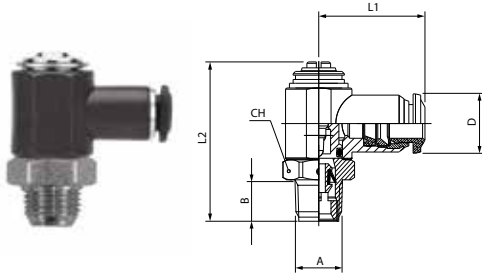
Part No.	Tube	A (PTF)	B	L1	L2 min	L2 max	CH	D
85927-02-02	1/8	1/8	.240 (6,1)	.827 (21)	1.614 (41)	1.830 (46,5)	.551 (14)	.394 (10)
85927-53-02	5/32	1/8	.240 (6,1)	.827 (21)	1.614 (41)	1.830 (46,5)	.551 (14)	.394 (10)
85927-04-02	1/4	1/8	.240 (6,1)	.866 (22)	1.614 (41)	1.830 (46,5)	.551 (14)	.472 (12)
85927-04-04	1/4	1/4	.358 (9,1)	.984 (25)	1.850 (47)	2.086 (53)	.669 (17)	.472 (12)
85927-06-04	3/8	1/4	.358 (9,1)	1.181 (30,5)	2.205 (56)	2.480 (63)	.787 (20)	.669 (17)

55903

METRIC TUBE FLOW CONTROL (OUT)



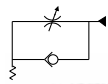
PTF 
C



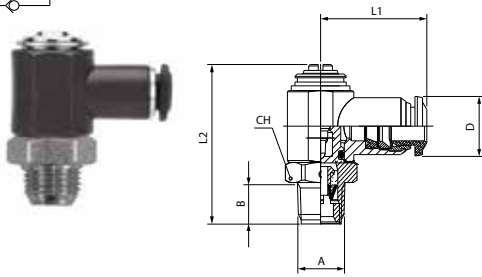
Part No.	Tube	A (PTF)	B	L1	L2	CH	D
55903-4-1/8	5/32 (4)	1/8	.240 (6,1)	.846 (21,5)	1.220 (31)	.551 (14)	.394 (10)
55903-5-1/8	5	1/8	.240 (6,1)	.886 (22,5)	1.220 (31)	.551 (14)	.492 (12,5)
55903-5-1/4	5	1/4	.358 (9,1)	.984 (25)	1.437 (36,5)	.669 (17)	.492 (12,5)
55903-6-1/8	6	1/8	.240 (6,1)	.906 (23)	1.220 (31)	.551 (14)	.492 (12,5)
55903-6-1/4	6	1/4	.358 (9,1)	1.004 (25,5)	1.437 (36,5)	.669 (17)	.492 (12,5)
55903-8-1/8	5/16 (8)	1/8	.240 (6,1)	.925 (23,5)	1.220 (31)	.551 (14)	.551 (14)
55903-8-1/4	5/16 (8)	1/4	.358 (9,1)	1.024 (26)	1.437 (36,5)	.669 (17)	.551 (14)

55913

METRIC TUBE FLOW CONTROL (IN)



PTF 
V



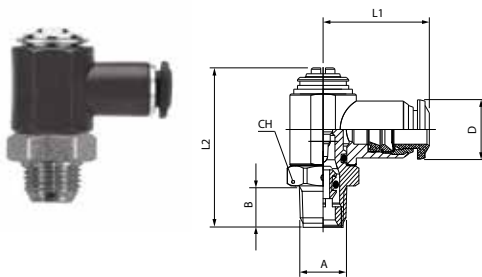
Part No.	Tube	A (PTF)	B	L1	L2	CH	D
55913-4-1/8	5/32 (4)	1/8	.240 (6,1)	.846 (21,5)	1.220 (31)	.551 (14)	.394 (10)
55913-5-1/8	5	1/8	.240 (6,1)	.886 (22,5)	1.220 (31)	.551 (14)	.492 (12,5)
55913-5-1/4	5	1/4	.358 (9,1)	.984 (25)	1.437 (36,5)	.669 (17)	.492 (12,5)
55913-6-1/8	6	1/8	.240 (6,1)	.906 (23)	1.220 (31)	.551 (14)	.492 (12,5)
55913-6-1/4	6	1/4	.358 (9,1)	1.004 (25,5)	1.437 (36,5)	.669 (17)	.492 (12,5)
55913-8-1/8	5/16 (8)	1/8	.240 (6,1)	.925 (23,5)	1.220 (31)	.551 (14)	.551 (14)
55913-8-1/4	5/16 (8)	1/4	.358 (9,1)	1.024 (26)	1.437 (36,5)	.669 (17)	.551 (14)

55923

METRIC TUBE NEEDLE VALVE



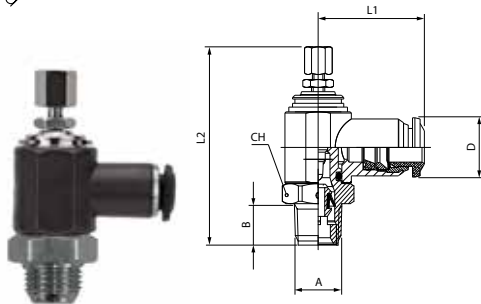
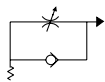
PTF 
B



Part No.	Tube	A (PTF)	B	L1	L2	CH	D
55923-4-1/8	5/32 (4)	1/8	.240 (6,1)	.846 (21,5)	1.220 (31)	.551 (14)	.394 (10)
55923-5-1/8	5	1/8	.240 (6,1)	.886 (22,5)	1.220 (31)	.551 (14)	.492 (12,5)
55923-5-1/4	5	1/4	.358 (9,1)	.984 (25)	1.437 (36,5)	.669 (17)	.492 (12,5)
55923-6-1/8	6	1/8	.240 (6,1)	.906 (23)	1.220 (31)	.551 (14)	.492 (12,5)
55923-6-1/4	6	1/4	.358 (9,1)	1.004 (25,5)	1.437 (36,5)	.669 (17)	.492 (12,5)
55923-8-1/8	5/16 (8)	1/8	.240 (6,1)	.925 (23,5)	1.220 (31)	.551 (14)	.551 (14)
55923-8-1/4	5/16 (8)	1/4	.358 (9,1)	1.024 (26)	1.437 (36,5)	.669 (17)	.551 (14)

55907

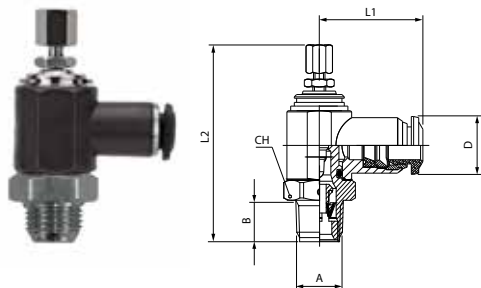
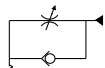
METRIC TUBE FLOW CONTROL (OUT)



Part No.	Tube	A (PTF)	B	L1	L2 min	L2 max	CH	D
55907-4-1/8	5/32 (4)	1/8	.240 (6,1)	.846 (21,5)	1.732 (44)	1.929 (49)	.551 (14)	.394 (10)
55907-5-1/8	5	1/8	.240 (6,1)	.886 (22,5)	1.732 (44)	1.929 (49)	.551 (14)	.492 (12,5)
55907-5-1/4	5	1/4	.358 (9,1)	.984 (25)	1.909 (48,5)	2.165 (55)	.669 (17)	.492 (12,5)
55907-6-1/8	6	1/8	.240 (6,1)	.906 (23)	1.732 (44)	1.929 (49)	.551 (14)	.492 (12,5)
55907-6-1/4	6	1/4	.358 (9,1)	1.004 (25,5)	1.909 (48,5)	2.165 (55)	.669 (17)	.492 (12,5)
55907-8-1/8	5/16 (8)	1/8	.240 (6,1)	.925 (23,5)	1.732 (44)	1.929 (49)	.551 (14)	.551 (14)
55907-8-1/4	5/16 (8)	1/4	.358 (9,1)	1.024 (26)	1.909 (48,5)	2.165 (55)	.669 (17)	.551 (14)

55917

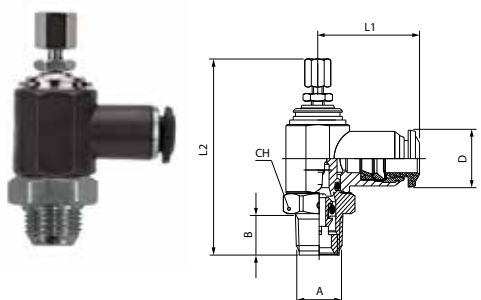
METRIC TUBE FLOW CONTROL (IN)



Part No.	Tube	A (PTF)	B	L1	L2 min	L2 max	CH	D
55917-4-1/8	5/32 (4)	1/8	.240 (6,1)	.846 (21,5)	1.732 (44)	1.929 (49)	.551 (14)	.394 (10)
55917-5-1/8	5	1/8	.240 (6,1)	.886 (22,5)	1.732 (44)	1.929 (49)	.551 (14)	.492 (12,5)
55917-5-1/4	5	1/4	.358 (9,1)	.984 (25)	1.909 (48,5)	2.165 (55)	.669 (17)	.492 (12,5)
55917-6-1/8	6	1/8	.240 (6,1)	.906 (23)	1.732 (44)	1.929 (49)	.551 (14)	.492 (12,5)
55917-6-1/4	6	1/4	.358 (9,1)	1.004 (25,5)	1.909 (48,5)	2.165 (55)	.669 (17)	.492 (12,5)
55917-8-1/8	5/16 (8)	1/8	.240 (6,1)	.925 (23,5)	1.732 (44)	1.929 (49)	.551 (14)	.551 (14)
55917-8-1/4	5/16 (8)	1/4	.358 (9,1)	1.024 (26)	1.909 (48,5)	2.165 (55)	.669 (17)	.551 (14)

55927

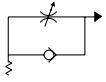
METRIC TUBE NEEDLE VALVE



Part No.	Tube	A (PTF)	B	L1	L2 min	L2 max	CH	D
55927-4-1/8	5/32 (4)	1/8	.240 (6,1)	.846 (21,5)	1.732 (44)	1.929 (49)	.551 (14)	.394 (10)
55927-5-1/8	5	1/8	.240 (6,1)	.886 (22,5)	1.732 (44)	1.929 (49)	.551 (14)	.492 (12,5)
55927-5-1/4	5	1/4	.358 (9,1)	.984 (25)	1.909 (48,5)	2.165 (55)	.669 (17)	.492 (12,5)
55927-6-1/8	6	1/8	.240 (6,1)	.906 (23)	1.732 (44)	1.929 (49)	.551 (14)	.492 (12,5)
55927-6-1/4	6	1/4	.358 (9,1)	1.004 (25,5)	1.909 (48,5)	2.165 (55)	.669 (17)	.492 (12,5)
55927-8-1/8	5/16 (8)	1/8	.240 (6,1)	.925 (23,5)	1.732 (44)	1.929 (49)	.551 (14)	.551 (14)
55927-8-1/4	5/16 (8)	1/4	.358 (9,1)	1.024 (26)	1.909 (48,5)	2.165 (55)	.669 (17)	.551 (14)

82903

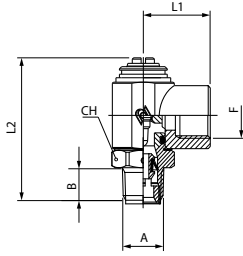
FEMALE NPTF FLOW CONTROL (OUT)



PTF

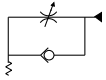


Part No.	F NPTF	A (PTF)	B	L1	L2	CH
82903-02-02	1/8	1/8	.240 (6,1)	.650 (16,5)	1.181 (30,5)	.551 (14)
82903-04-04	1/4	1/4	.358 (9,1)	.866 (22)	1.417 (36)	.669 (17)



82913

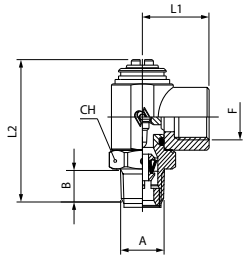
FEMALE NPTF FLOW CONTROL (IN)



PTF



Part No.	F NPTF	A (PTF)	B	L1	L2	CH
82913-02-02	1/8	1/8	.240 (6,1)	.650 (16,5)	1.181 (30,5)	.551 (14)
82913-04-04	1/4	1/4	.358 (9,1)	.866 (22)	1.417 (36)	.669 (17)



82923

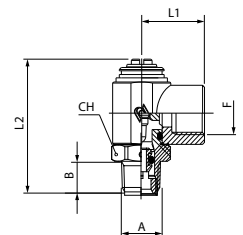
FEMALE NPTF NEEDLE VALVE



PTF

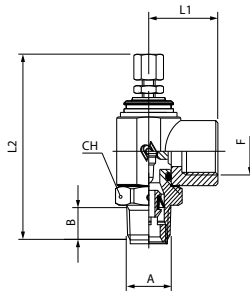
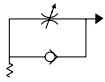


Part No.	F NPTF	A (PTF)	B	L1	L2	CH
82923-02-02	1/8	1/8	.240 (6,1)	.650 (16,5)	1.181 (30,5)	.551 (14)
82923-04-04	1/4	1/4	.358 (9,1)	.866 (22)	1.417 (36)	.669 (17)



82907

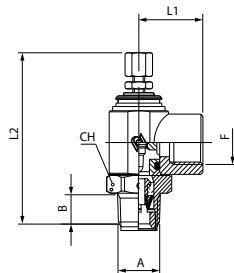
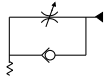
FEMALE NPTF FLOW CONTROL (OUT)



Part No.	F NPTF	A (PTF)	B	L1	L2 min	L2 max	CH
82907-02-02	1/8	1/8	.240 (6,1)	.650 (16,5)	1.614 (41)	1.830 (46,5)	.551 (14)
82907-04-04	1/4	1/4	.358 (9,1)	.866 (22)	1.850 (47)	2.086 (53)	.669 (17)

82917

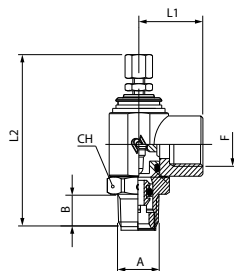
FEMALE NPTF FLOW CONTROL (IN)



Part No.	F NPTF	A (PTF)	B	L1	L2 min	L2 max	CH
82917-02-02	1/8	1/8	.240 (6,1)	.650 (16,5)	1.614 (41)	1.830 (46,5)	.551 (14)
82917-04-04	1/4	1/4	.358 (9,1)	.866 (22)	1.850 (47)	2.086 (53)	.669 (17)

82927

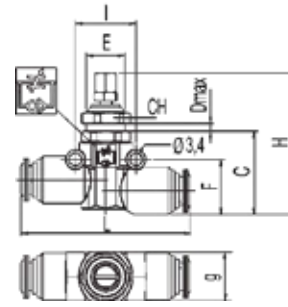
FEMALE NPTF NEEDLE VALVE



Part No.	F NPTF	A (PTF)	B	L1	L2 min	L2 max	CH
82927-02-02	1/8	1/8	.240 (6,1)	.650 (16,5)	1.614 (41)	1.830 (46,5)	.551 (14)
82927-04-04	1/4	1/4	.358 (9,1)	.866 (22)	1.850 (47)	2.086 (53)	.669 (17)

82815

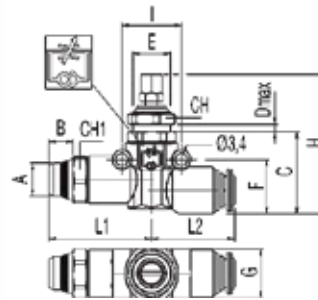
INLINE FLOW CONTROL



Part No.	Tube	C	D	E	F	G	H min	H max	I	L	CH
82815-04	1/4	.928 (23,5)	.157 (4)	M11X1	.618 (15,5)	.551 (14)	1.578 (40,5)	1.827 (46,5)	.677 (17)	1.890 (48)	.512 (13)
82815-06	3/8	.996 (25,5)	.177 (4,5)	M16X1	.807 (20,5)	.807 (20,5)	1.929 (49)	2.161 (55)	.787 (20)	2.272 (57,5)	.709 (18)

82820

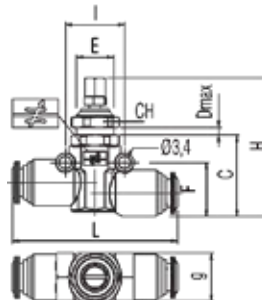
INLINE FLOW CONTROL MALE X TUBE



Part No.	A	Tube	B	C	D	E	F	G	H min	H max	I	L1	L2	CH	CH1
82820-04-04	1/4	1/4	.276 (7)	.928 (23,5)	.157 (4)	M11X1	.618 (15,5)	.551 (14)	1.578 (40,5)	1.827 (46,5)	.677 (17)	1.169 (29,5)	.945 (24)	.512 (13)	.512 (13)
82820-06-04	1/4	3/8	.276 (7)	.996 (25,5)	.177 (4,5)	M16X1	.807 (20,5)	.807 (20,5)	1.929 (49)	2.161 (55)	.787 (20)	1.378 (35)	1.134 (29)	.709 (18)	.630 (13)
82820-06-06	3/8	3/8	.295 (7,5)	.996 (25,5)	.177 (4,5)	M16X1	.807 (20,5)	.807 (20,5)	1.929 (49)	2.161 (55)	.787 (20)	1.299 (33)	1.134 (29)	.709 (18)	.669 (17)

82830

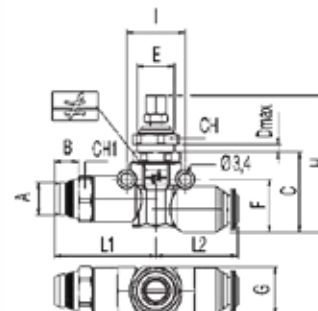
INLINE TUBE NEEDLE VALVE



Part No.	Tube	C	D	E	F	G	H min	H max	I	L	CH
82830-04	1/4	.928 (23,5)	.157 (4)	M11X1	.618 (15,5)	.551 (14)	1.578 (40,5)	1.827 (46,5)	.677 (17)	1.890 (48)	.512 (13)
82830-06	3/8	.996 (25,5)	.177 (4,5)	M16X1	.807 (20,5)	.807 (20,5)	1.929 (49)	2.161 (55)	.787 (20)	2.272 (57,5)	.709 (18)

82835

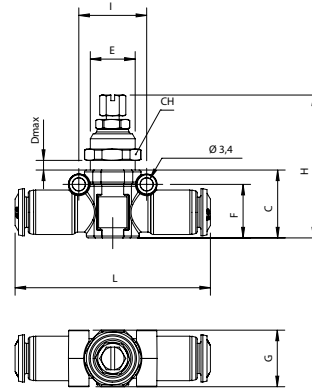
INLINE NEEDLE VALVE MALE X TUBE



Part No.	A	Tube	B	C	D	E	F	G	H min	H max	I	L1	L2	CH	CH1
82835-04-04	1/4	1/4	.276 (7)	.928 (23,5)	.157 (4)	M11X1	.618 (15,5)	.551 (14)	1.578 (40,5)	1.827 (46,5)	.677 (17)	1.169 (29,5)	.945 (24)	.512 (13)	.512 (13)
82835-06-06	3/8	3/8	.295 (7,5)	.996 (25,5)	.177 (4,5)	M16X1	.807 (20,5)	.807 (20,5)	1.929 (49)	2.161 (55)	.787 (20)	1.299 (33)	1.134 (29)	.709 (18)	.669 (17)

85940

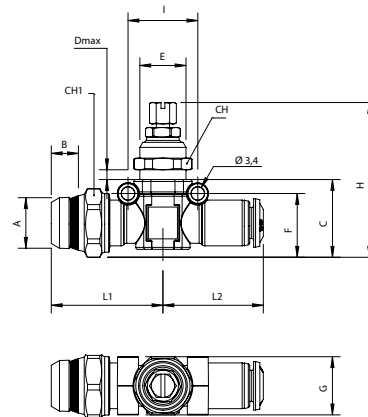
TUBE IN-LINE NEEDLE VALVE (UNIDIRECTIONAL FLOW)



Part No.	Tube	C	D	E	F	G	H	I	L	CH
85940-53	5/32 (4)	.709 (18)	.157 (4)	M12x1	.571 (14,5)	.598 (15)	1.476 (37,5)÷1.712 (43,5)	.709 (18)	2.046 (52)	.551 (14)
85940-04	1/4	.709 (18)	.236 (6)	M12x1	.571 (14,5)	.598 (15)	1.476 (37,5)÷1.712 (43,5)	.709 (18)	2.046 (52)	.551 (14)
85940-05	5/16 (8)	.787 (20)	.256 (6,5)	M14x1	.658 (16,5)	.677 (17)	1.555 (39,5)÷1.791 (45,5)	.787 (20)	2.292 (58)	.630 (16)
85940-06	3/8	.928 (23,5)	.315 (8)	M16x1	.767 (19,5)	.749 (19)	1.870 (47,5)÷2.106 (53,5)	.887 (22,5)	2.637 (67)	.709 (18)

85945

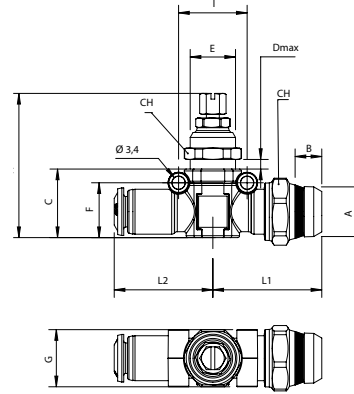
MALE "UNIVERSAL SHORT"-TUBE IN-LINE FLOW CONTROL (CONTROLLED FLOW OUT)



Part No.	Tube	A	B	C	D	E	F	G	H	I	L1	L2	CH	CH1
85945-53-02	5/32 (4)	1/8	.217 (5,5)	.787 (20)	.236 (6)	M12x1	.658 (16,5)	.598 (15)	1.555 (39,5)÷1.791 (45,5)	.709 (18)	1.129 (28,5)	1.016 (26)	.551 (14)	.630 (16)
85945-04-02	1/4	1/8	.217 (5,5)	.787 (20)	.236 (6)	M12x1	.658 (16,5)	.598 (15)	1.555 (39,5)÷1.791 (45,5)	.709 (18)	1.129 (28,5)	1.016 (26)	.551 (14)	.630 (16)
85945-04-04	1/4	1/4	.276 (7)	.787 (20)	.236 (6)	M12x1	.658 (16,5)	.598 (15)	1.555 (39,5)÷1.791 (45,5)	.709 (18)	1.129 (28,5)	1.016 (26)	.551 (14)	.630 (16)
85945-05-04	5/16 (8)	1/4	.276 (7)	.908 (23)	.256 (6,5)	M14x1	.658 (16,5)	.677 (17)	1.673 (42,5)÷1.909 (48,5)	.787 (20)	1.319 (33,5)	1.134 (29)	.630 (16)	.787 (20)
85945-05-06	5/16 (8)	3/8	.295 (7,5)	.908 (23)	.256 (6,5)	M14x1	.658 (16,5)	.677 (17)	1.673 (42,5)÷1.909 (48,5)	.787 (20)	1.319 (33,5)	1.134 (29)	.630 (16)	.787 (20)
85945-06-06	3/8	3/8	.295 (7,5)	.968 (24,5)	.315 (8)	M16x1	.807 (20,5)	.749 (19)	1.673 (42,5)÷2.125 (54)	.887 (22,5)	1.359 (34,5)	1.319 (33,5)	.709 (18)	.787 (20)
85945-06-08	3/8	1/2	.355 (9)	.976 (25)	.315 (8)	M16x1	.827 (21)	.749 (19)	1.673 (42,5)÷2.145 (54,5)	.887 (22,5)	1.359 (34,5)	1.319 (33,5)	.709 (18)	.827 (21)

85950

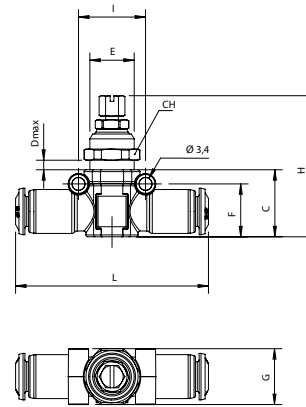
MALE "UNIVERSAL SHORT"- TUBE IN-LINE FLOW CONTROL (CONTROLLED FLOW IN)



Part No.	Tube	A	B	C	D	E	F	G	H	I	L1	L2	CH	CH1
85950-53-02	5/32 (4)	1/8	.217 (5,5)	.787 (20)	.236 (6)	M12x1	.658 (16,5)	.598 (15)	1.555 (39,5)÷1,791 (45,5)	.709 (18)	1.134 (29)	1.016 (26)	.551 (14)	.630 (16)
85950-04-02	1/4	1/8	.217 (5,5)	.787 (20)	.236 (6)	M12x1	.658 (16,5)	.598 (15)	1.555 (39,5)÷1,791 (45,5)	.709 (18)	1.134 (29)	1.016 (26)	.551 (14)	.630 (16)
85950-04-04	1/4	1/4	.276 (7)	.787 (20)	.236 (6)	M12x1	.658 (16,5)	.598 (15)	1.555 (39,5)÷1,791 (45,5)	.709 (18)	1.134 (29)	1.016 (26)	.551 (14)	.630 (16)
85950-05-04	5/16 (8)	1/4	.276 (7)	.908 (23)	.256 (6,5)	M14x1	.658 (16,5)	.677 (17)	1,673 (42,5)÷1,909 (48,5)	.787 (20)	1.319 (33,5)	1.134 (29)	.630 (16)	.787 (20)
85950-05-06	5/16 (8)	3/8	.295 (7,5)	.908 (23)	.256 (6,5)	M14x1	.658 (16,5)	.677 (17)	1,673 (42,5)÷1,909 (48,5)	.787 (20)	1.319 (33,5)	1.134 (29)	.630 (16)	.787 (20)
85950-06-06	3/8	3/8	.295 (7,5)	.968 (24,5)	.315 (8)	M16x1	.807 (20,5)	.749 (19)	1,673 (42,5)÷2,125 (54)	.887 (22,5)	1.359 (34,5)	1.319 (33,5)	.709 (18)	.787 (20)
85950-06-08	3/8	1/2	.355 (9)	.976 (25)	.315 (8)	M16x1	.827 (21)	.749 (19)	1,673 (42,5)÷2,145 (54,5)	.887 (22,5)	1.359 (34,5)	1.319 (33,5)	.709 (18)	.827 (21)

85955

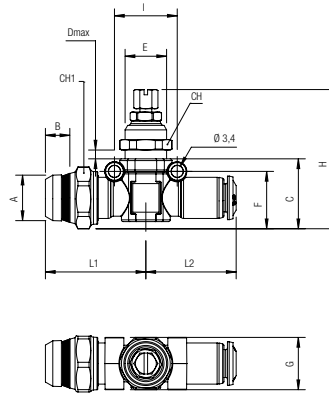
TUBE IN-LINE NEEDLE VALVE (BIDIRECTIONAL FLOW)



Part No.	Tube	C	D	E	F	G	H	I	L	CH
85955-53	5/32 (4)	.709 (18)	.236 (6)	M12x1	.571 (14,5)	.598 (15)	1.476 (37,5)÷1,712 (43,5)	.709 (18)	2.046 (52)	.551 (14)
85955-04	1/4	.709 (18)	.236 (6)	M12x1	.571 (14,5)	.598 (15)	1.476 (37,5)÷1,712 (43,5)	.709 (18)	2.046 (52)	.551 (14)
85955-05	5/16 (8)	.787 (20)	.256 (6,5)	M14x1	.658 (16,5)	.677 (17)	1.555 (39,5)÷1,791 (45,5)	.787 (20)	2.292 (58)	.630 (16)
85955-06	3/8	.928 (23,5)	.315 (8)	M16x1	.767 (19,5)	.749 (19)	1.870 (47,5)÷2,106 (53,5)	.887 (22,5)	2.637 (67)	.709 (18)

85960

MALE "UNIVERSAL SHORT" - TUBE IN-LINE FLOW CONTROL (BIDIRECTIONAL FLOW)



Code	Tube	A	B	C	D	E	F	G	H	I	L1	L2	CH	CH1
85960-53-02	5/32 (4)	1/8	.217 (5,5)	.787 (20)	.236 (6)	M12x1	.658 (16,5)	.598 (15)	1.555 (39,5)÷1,791 (45,5)	.709 (18)	1.129 (28,5)	1.016 (26)	.551 (14)	.630 (16)
85960-04-02	1/4	1/8	.217 (5,5)	.787 (20)	.236 (6)	M12x1	.658 (16,5)	.598 (15)	1.555 (39,5)÷1,791 (45,5)	.709 (18)	1.129 (28,5)	1.016 (26)	.551 (14)	.630 (16)
85960-04-04	1/4	1/4	.276 (7)	.787 (20)	.236 (6)	M12x1	.658 (16,5)	.598 (15)	1.555 (39,5)÷1,791 (45,5)	.709 (18)	1.129 (28,5)	1.016 (26)	.551 (14)	.630 (16)
85960-05-04	5/16 (8)	1/4	.276 (7)	.908 (23)	.256 (6,5)	M14x1	.658 (16,5)	.677 (17)	1,673 (42,5)÷1,909 (48,5)	.787 (20)	1.319 (33,5)	1.134 (29)	.630 (16)	.787 (20)
85960-05-06	5/16 (8)	3/8	.295 (7,5)	.908 (23)	.256 (6,5)	M14x1	.658 (16,5)	.677 (17)	1,673 (42,5)÷1,909 (48,5)	.787 (20)	1.319 (33,5)	1.134 (29)	.630 (16)	.787 (20)
85960-06-06	3/8	3/8	.295 (7,5)	.968 (24,5)	.315 (8)	M16x1	.807 (20,5)	.749 (19)	1,673 (42,5)÷2,125 (54)	.887 (22,5)	1.359 (34,5)	1.319 (33,5)	.709 (18)	.787 (20)
85960-06-08	3/8	1/2	.355 (9)	.976 (25)	.315 (8)	M16x1	.827 (21)	.749 (19)	1,673 (42,5)÷2,145 (54,5)	.887 (22,5)	1.359 (34,5)	1.319 (33,5)	.709 (18)	.827 (21)

FLOW REGULATORS



TECHNICAL CHARACTERISTICS



Reference Standard

1907/2006
REACH ✓

2011/65/CE
RoHS ✓

PED
2014/68/UE

SILICON
FREE



Pressure Rating

Vacuum ~ 250 PSI
-0.99 bar ~ 20 bar
-0.099 MPa ~ 2.0 MPa

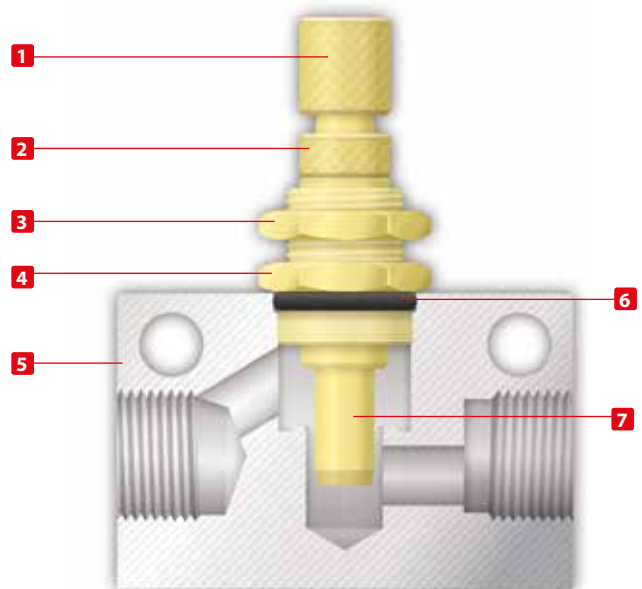
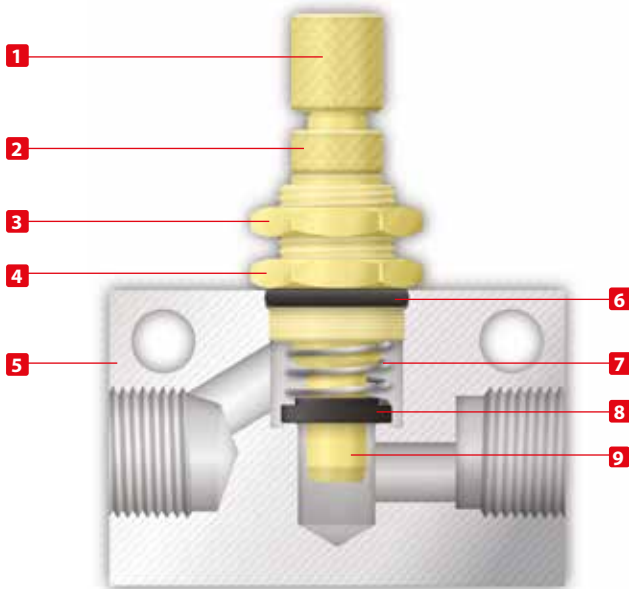


Temperature Rating:

NBR
-4° F ~ 176° F
-20° C ~ 80° C

UNI-DIRECTIONAL

BI-DIRECTIONAL



Component Parts and Materials

- 1 Brass Adjusting Knob
- 2 Brass Nut
- 3 Brass Locking Nut
- 4 Brass Nipple
- 5 Anodized Aluminium Body
- 6 NBR O-Ring
- 7 Steel Spring
- 8 Seal floating washer
- 9 Brass Adjusting Needle



Component Parts and Materials

- 1 Brass Adjusting Knob
- 2 Brass Nut
- 3 Brass Locking Nut
- 4 Brass Nipple
- 5 Anodized Aluminium Body
- 6 NBR O-Ring
- 7 Brass Adjusting Needle

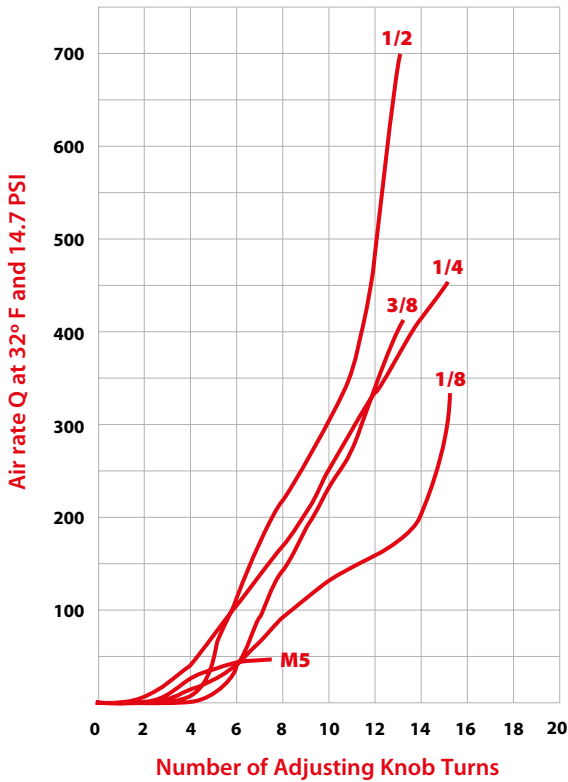


Flow Characteristics of Inline Flow Control Valves

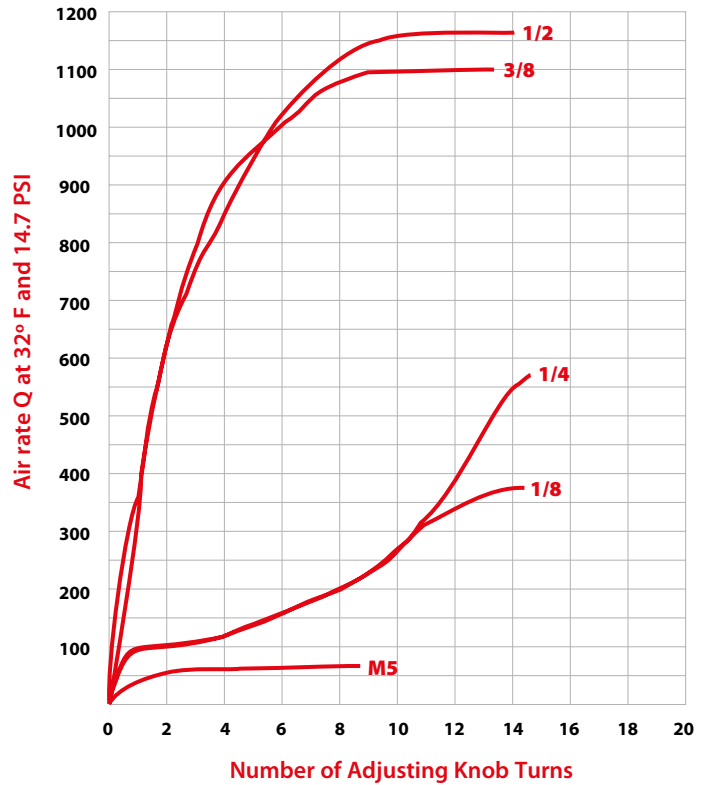
Inlet Pressure
101 PSI

Outlet Pressure: Atmospheric Pressure
14.7 PSI

UNI-DIRECTIONAL

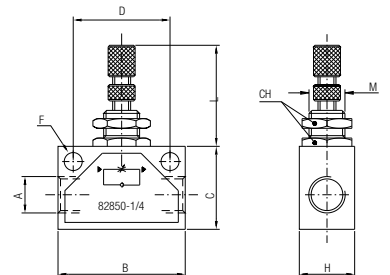


BI-DIRECTIONAL



82850

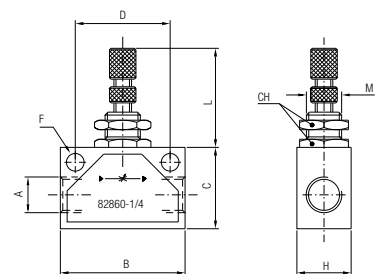
UNI-DIRECTIONAL INLINE VALVE



Part No.	A NPTF	B	C	H	D	F	L min	L max	M	CH
82850-02	1/8	1.378 (35)	.866 (22)	.709 (18)	.984 (25)	.177 (4,5)	1.023 (26)	1.417 (36)	M12x0.75	.590 (15)
82850-04	1/4	1.811 (46)	1.181 (30)	.787 (20)	1.378 (35)	.256 (6,5)	1.023 (26)	1.417 (36)	M12x0.75	.590 (15)
82850-06	3/8	1.968 (50)	1.181 (30)	.984 (25)	1.378 (35)	.256 (6,5)	1.259 (32)	1.653 (42)	M18x1.5	.866 (22)
82850-08	1/2	2.362 (60)	1.575 (40)	.984 (25)	1.732 (44)	.256 (6,5)	1.259 (32)	1.734 (44)	M18x1.5	.866 (22)

82860

BI-DIRECTIONAL INLINE NEEDLE VALVE



Part No.	A NPTF	B	C	H	D	F	L min	L max	M	CH
82860-02	1/8	1.378 (35)	.866 (22)	.709 (18)	.984 (25)	.177 (4,5)	1.023 (26)	1.417 (36)	M12x0.75	.590 (15)
82860-04	1/4	1.811 (46)	1.181 (30)	.787 (20)	1.378 (35)	.256 (6,5)	1.023 (26)	1.417 (36)	M12x0.75	.590 (15)
82860-06	3/8	1.968 (50)	1.181 (30)	.984 (25)	1.378 (35)	.256 (6,5)	1.259 (32)	1.653 (42)	M18x1.5	.866 (22)
82860-08	1/2	2.362 (60)	1.575 (40)	.984 (25)	1.732 (44)	.256 (6,5)	1.259 (32)	1.734 (44)	M18x1.5	.866 (22)

QUICK EXHAUST VALVES



TECHNICAL CHARACTERISTICS



Reference Standard

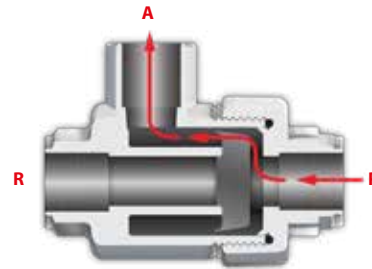
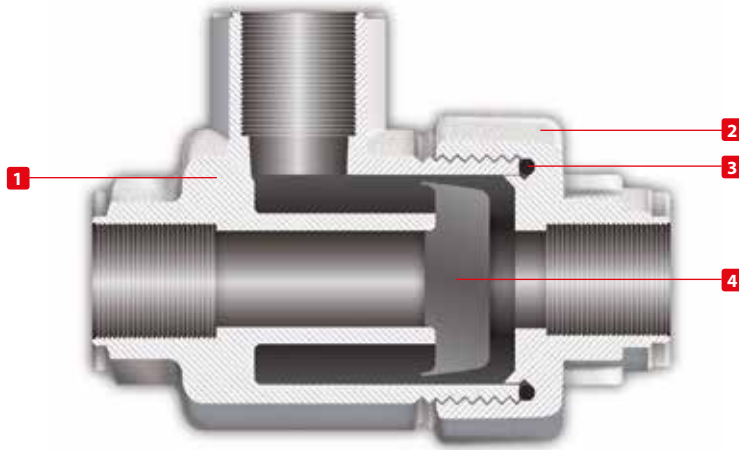
1907/2006
REACH ✓

2011/65/CE
RoHS ✓

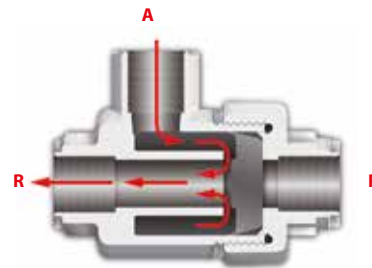
PED
2014/68/UE

**SILICON
FREE**

According to the UNI standards ref. UNI- ISO 5598, this valve is considered: "Valve which immediately opens its outlet to exhaust, whenever the pressure of the air decreases at the inlet."



System pressure is applied to the inlet port (P), flow is directed to cylinder port (A).



When system pressure (P) is dropped, exhaust air in the cylinder (A) is discharged directly from the exhaust port (R).



Component Parts and Materials

- 1 Nickel Plated Brass Body
- 2 Nylon Cap Seal
- 3 Nickel Plated Brass Cap
- 4 NBR Piston



Pressure Rating

- 4.35 PSI ~ 145 PSI
- 0.3 bar ~ 10 bar
- 0.003 MPa ~ 1.0 MPa



Threads

NPTF



Temperature Rating

- 4° F ~ 176° F
- 20° C ~ 80° C



Media

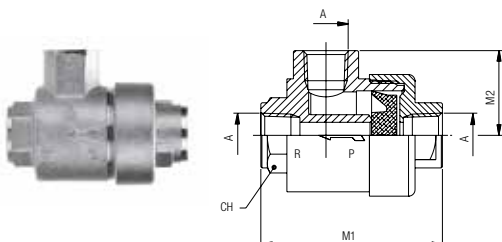
- Compressed air

WARNING!

This valve exhausts to atmosphere.
DO NOT use toxic, corrosive or flammable media.

82650

QUICK EXHAUST VALVE

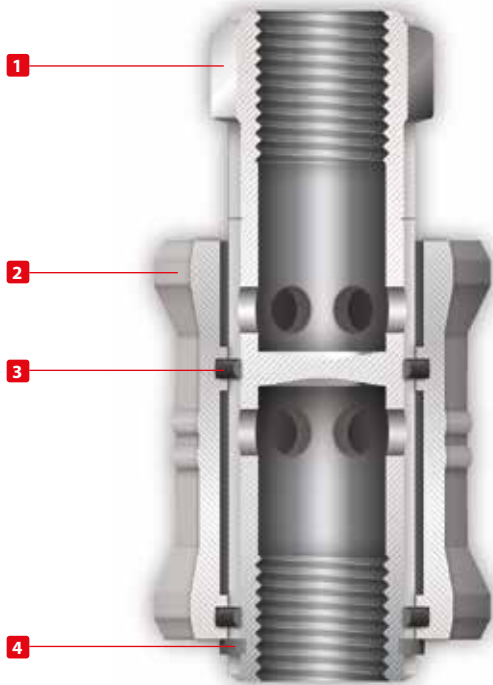


Part No.	A NPTF	M1	M2	CH
82650-02	1/8	1.456 (37)	.728 (18.5)	.551 (14)
82650-04	1/4	1.720 (43,7)	.926 (23.5)	.669 (17)
82650-06	3/8	2.381 (60,5)	1.043 (26,5)	.866 (22)
82650-08	1/2	2.834 (72)	1.260 (32)	1.024 (26)
82650-12	3/4	3.664 (88)	1.457 (37)	1.260 (32)
82650-16	1	4.291 (109)	1.890 (48)	1.811 (46)

SLIDE VALVES



TECHNICAL CHARACTERISTICS



Reference Standard

1907/2006
REACH ✓

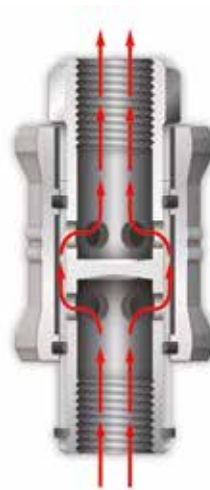
2011/65/CE
RoHS ✓

PED
2014/68/UE

**SILICON
FREE**

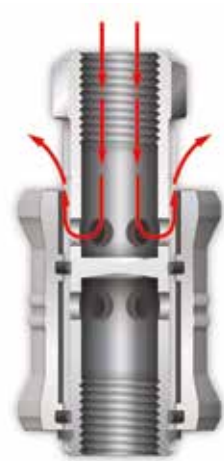
This Slide Valve can be considered a reversing ON-OFF valve. When in the closed position, it allows the used air to exit to the atmosphere.

ON



In the On position, the air coming from the air source passes through the holes on the stem of the valve.

OFF



In the OFF position, the air in the circuit passes through the holes on the stem and automatically exits to the atmosphere.



Pressure Rating

4.35 PSI ~ 145 PSI
0.3 bar ~ 10 bar
0.003 MPa ~ 1.0 MPa



Component Parts and Materials

- 1 Aluminium Sleeve
- 2 Nickel Plated Brass Stem
- 3 NBR O-Ring
- 4 Steel Shaft Clip



Temperature Rating

-4° F ~ 176° F
-20° C ~ 80° C



Media

- Compressed air

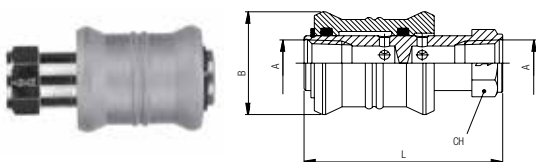


Threads

NPTF

82660

SLIDE VALVE



Part No.	A NPTF	B	L	CH
82660-02	1/8	.984 (25)	1.890 (48)	.551 (14)
82660-04	1/4	1.181 (30)	2.283 (58)	.669 (17)
82660-06	3/8	1.378 (35)	2.756 (70)	.866 (22)
82660-08	1/2	1.575 (40)	3.150 (80)	1.024 (26)

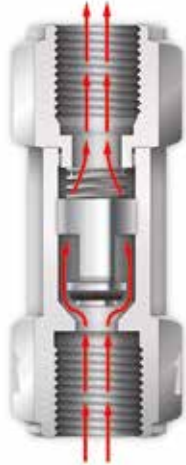
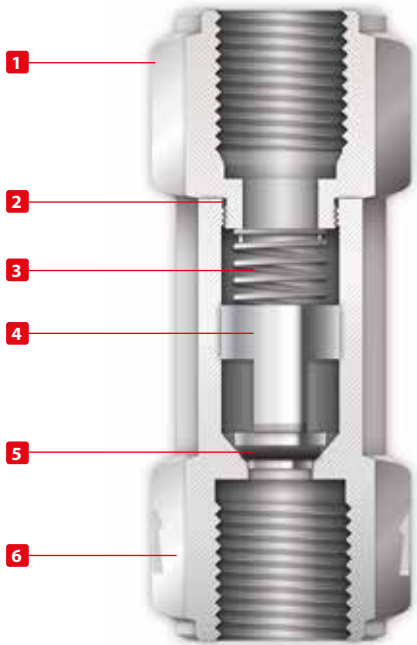
UNIDIRECTIONAL VALVES OR NON RETURN VALVES

TECHNICAL CHARACTERISTICS



Reference Standard

- 1907/2006
REACH ✓
- 2011/65/CE
RoHS ✓
- PED
2014/68/UE
- SILICON
FREE



Check Valves allow air to flow in only one direction. They do not allow air flow the opposite direction.

They operate directly with the air that passes through. Check Valves are normally used as safety device, permitting air pressure in a part of the circuit. The internal spring keeps the valve closed.



Pressure Rating

- 29 PSI ~ 116 PSI
- 2 bar ~ 8 bar
- 0.2 MPa ~ 0.8 MPa

Approximate Opening Pressure

- 29 PSI
- 2 bar
- 0.02 MPa



Component Parts and Materials

- 1 Nickel Plated Brass Body
- 2 NBR O-Ring
- 3 Steel Spring
- 4 Nickel Plated Brass Shutter
- 5 NBR O-Ring
- 6 Nickel Plated Brass Body



Temperatures Rating

- | | |
|---|--|
| <p>NBR</p> <p>-4° F ~ 176° F</p> <p>-20° C ~ 80° C</p> | <p>FKM on request (only for 82662 -82663)</p> <p>5° F ~ 392° F</p> <p>-15° C ~ 200° C</p> |
|---|--|



Media

- Compressed air



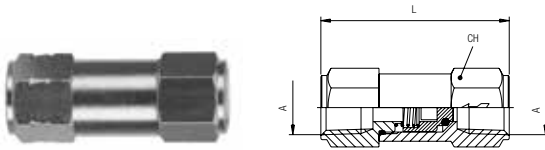
Threads

NPTF

82662

FEMALE X FEMALE

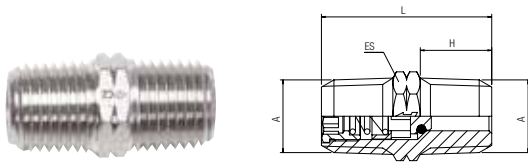
Part No.	A NPTF	L	CH
82662-02	1/8	1.437 (36,5)	.512 (13)
82662-04	1/4	1.850 (47)	.669 (17)



82663

MALE X MALE

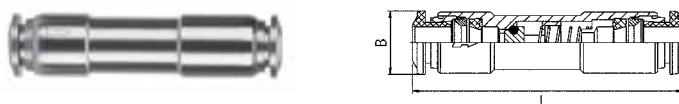
Part No.	A NPTF	L	ES	H
82663-04	1/4	1.220 (31)	.551 (14)	.512 (13)
82663-06	3/8	1.220 (31)	.748 (19)	.512 (13)



82664

INCH TUBE X TUBE

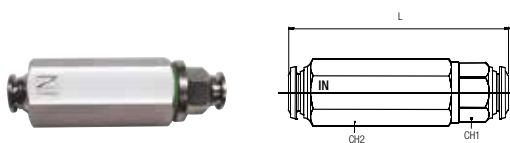
Part No.	Tube	L	B
82664VM-04-04	1/4	2.047 (52)	.512 (13)
82664VM-06-06	3/8	2.244 (57)	.669 (17)



82670VM

INLINE FILTER

Part No.	Tube	L	CH1	CH2
82670VM-04	1/4	2.579 (65,5)	.748 (19)	.512 (13)
82670VM-06	3/8	2.834 (72)	.748 (19)	.669 (17)

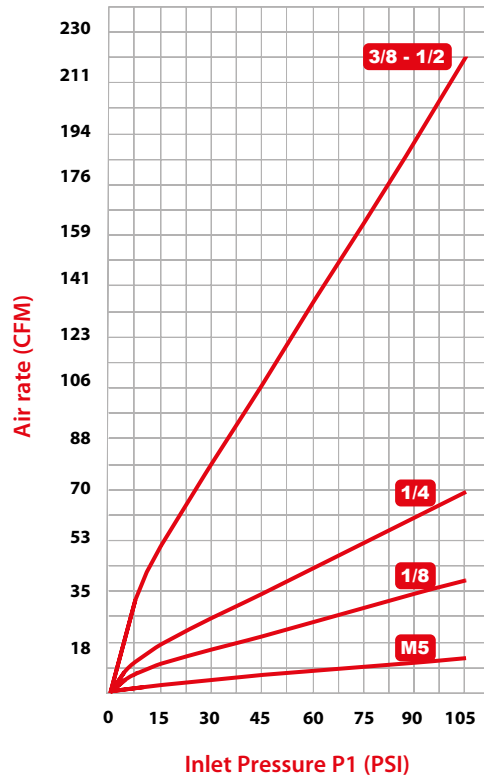




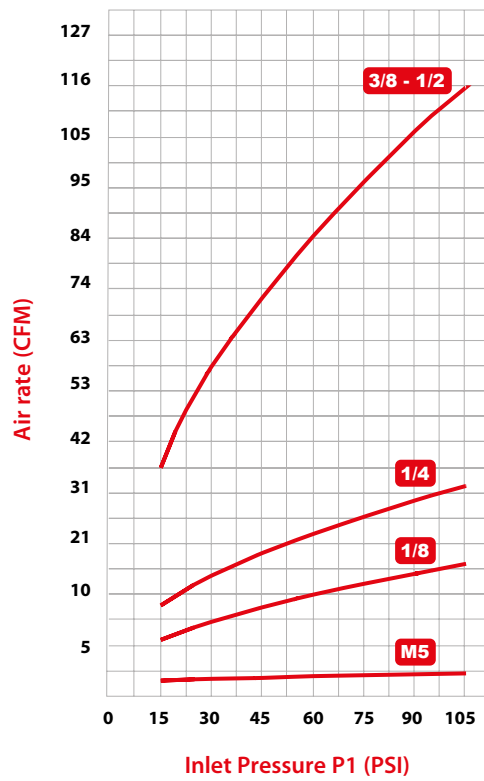
CHECK VALVES SPECIFICATIONS



Flow Rates of Exhaust



Flow Rates of Exhaust with a drop of 14.5 PSI



BLOCK VALVES



TECHNICAL CHARACTERISTICS

Aignep Block Valves are pneumatic devices used to control the movement of the cylinder. They install directly on the inlet and outlet ports of the cylinder and lock the piston in case of a drop in air pressure. Block Valves are used as safety devices in case of emergency stops, the bursting of an air tube, or anything that would stop the flow of air to the cylinder. Block Valves also enable the cylinder to be stopped in intermediate positions whenever the application would require such a solution.

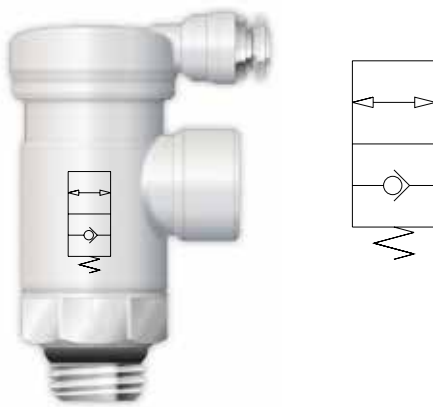


Advantages

- 1 Aignep Block Valves are available in Uni-Directional and Bi-Directional versions.
- 2 The bore of these valves do not reduce in size so airflow is never restricted.
- 3 These valves are compact, and the threaded connection and tube connection can rotate for maximum versatility.
- 4 The threaded port can also receive a flow control valve to adjust the speed of the cylinder.

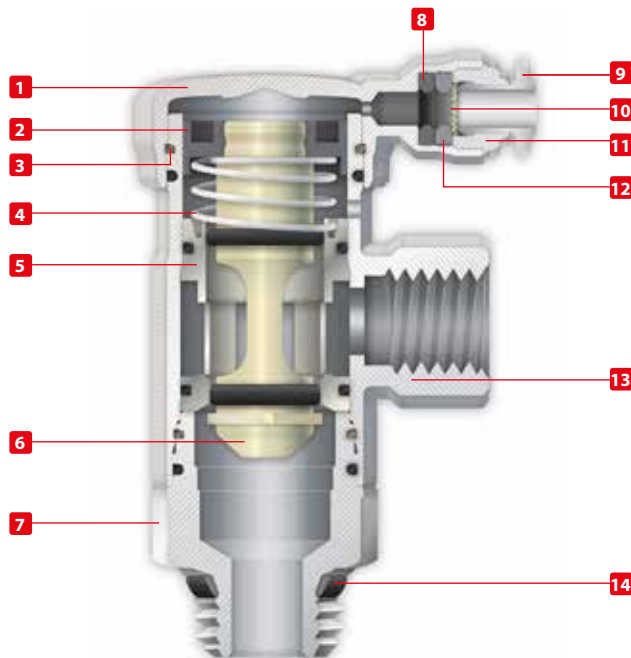
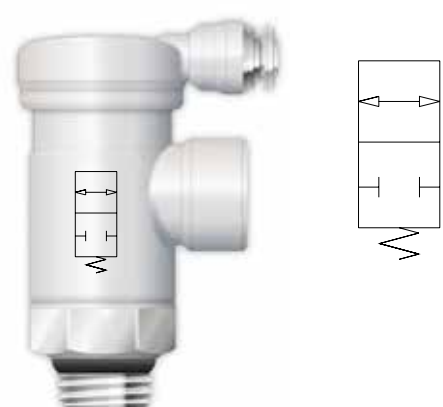
UNI-DIRECTIONAL

82880



BI-DIRECTIONAL

82890



Reference Standard

1907/2006 REACH ✓	2011/65/CE RoHS ✓	PED 2014/68/UE	SILICON FREE
-----------------------------	-----------------------------	-------------------	---------------------



Component Parts and Materials

- 1 Nickel Plated Brass Cover Cap
- 2 Nylon Lip Seal
- 3 Brass Retaining Ring
- 4 Steel Spring
- 5 Brass Shutter Support
- 6 Brass Shutter
- 7 Nickel Plated Brass Base
- 8 NBR Lip Seal
- 9 Nickel Plated Collet
- 10 303 Stainless Steel Gripper
- 11 Nickel Plated Brass Sleeve
- 12 Technopolymer Safety Ring
- 13 Nickel Plated Brass Body
- 14 NBR Thread Seal



Size

1/8"
1/4"



Orifice

1/8"	1/4"
Ø 5.5 mm	Ø 8 mm



Flow rate (87 PSI)

1/8"	1/4"
26.5 CFM	50.1 CFM



Pressure Rating

4.35 PSI ~ 145 PSI
0.3 bar ~ 10 bar
0.03 MPa ~ 1.0 MPa



Temperature Rating

-4° F ~ 176° F
-20° C ~ 80° C

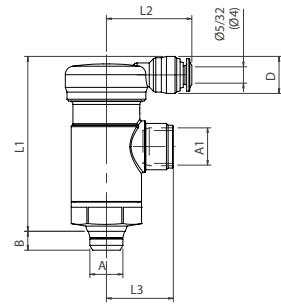


Media

• Compressed Air
(lubricated and non lubricated)

82880

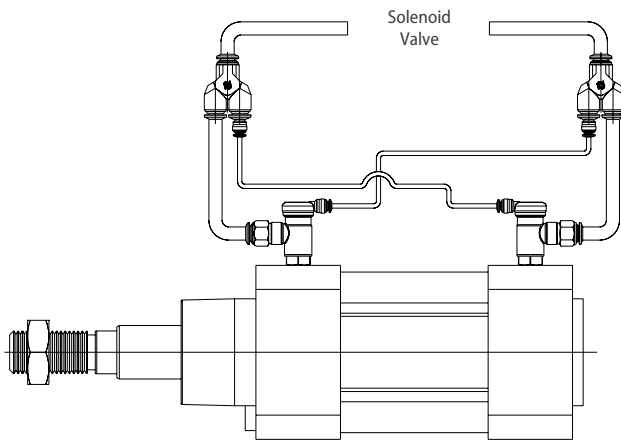
UNI-DIRECTIONAL CHECK VALVE



Part No.	A	A1 NPTF	B	L1	L2	L3	CH	D
82880-02	1/8	1/8	.217 (5,5)	1.969 (50)	.984 (25)	.728 (18,5)	.709 (18)	.433 (11)
82880-04	1/4	1/4	.276 (7)	1.988 (50,5)	.984 (25)	.807 (20,5)	.709 (18)	.433 (11)

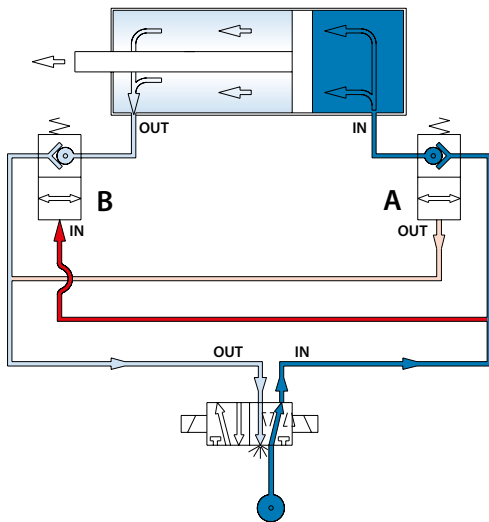


Installation



Pneumatic circuit - Cylinder in Action

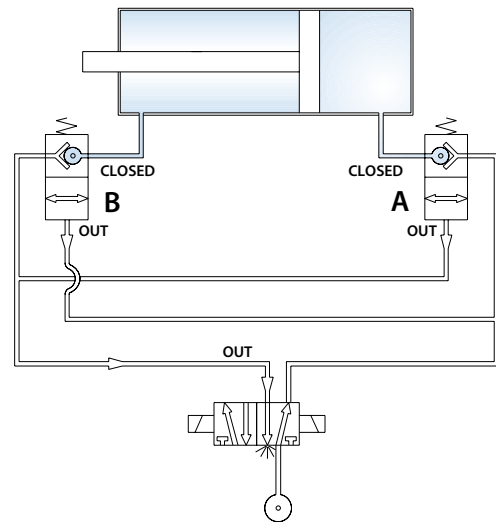
The PO check circuit is connected to the cylinder circuit. When P1 pressure is applied to the directional control valve, pressure is applied simultaneously to PO check valve A and a pilot signal to PO check valve B. The cylinder will extend. When the directional control valve shifts, pressure is applied to PO check valve B with a pilot signal sent to PO check valve A. The cylinder will retract.



■ Pilot
■ Feeding

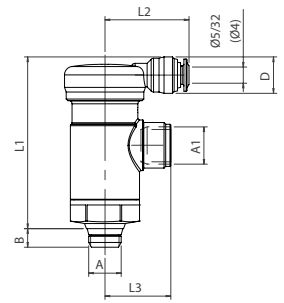
Pneumatic circuit - Cylinder at Rest

Remove P1 pressure from the directional control valve to lock the cylinder in place even under load conditions.



82890

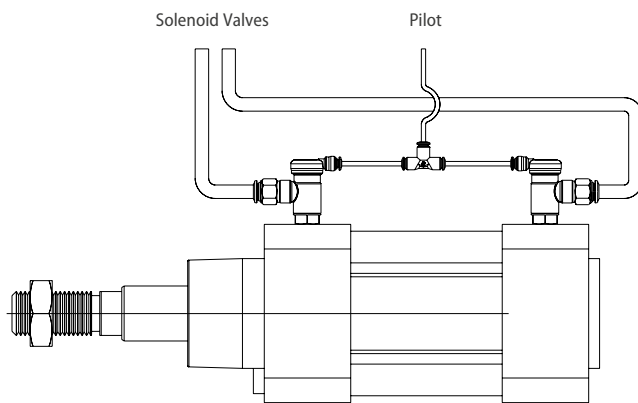
BI-DIRECTIONAL BLOCK VALVE



Part No.	A	A1 NPTF	B	L1	L2	L3	CH	D
82890-02	1/8	1/8	.217 (5,5)	1.969 (50)	.984 (25)	.728 (18,5)	.709 (18)	.433 (11)
82890-04	1/4	1/4	.276 (7)	1.988 (50,5)	.984 (25)	.807 (20,5)	.709 (18)	.433 (11)

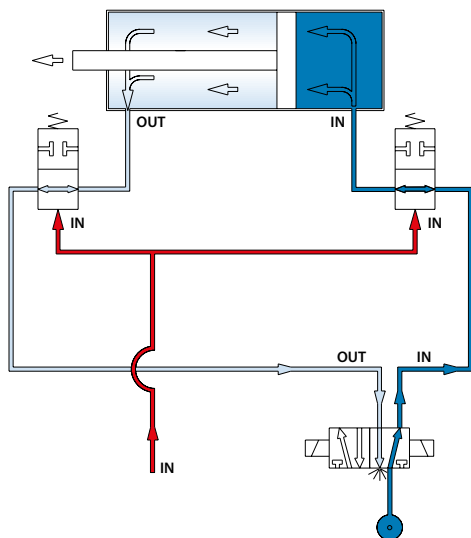


Installation



Pneumatic circuit - Cylinder in Action

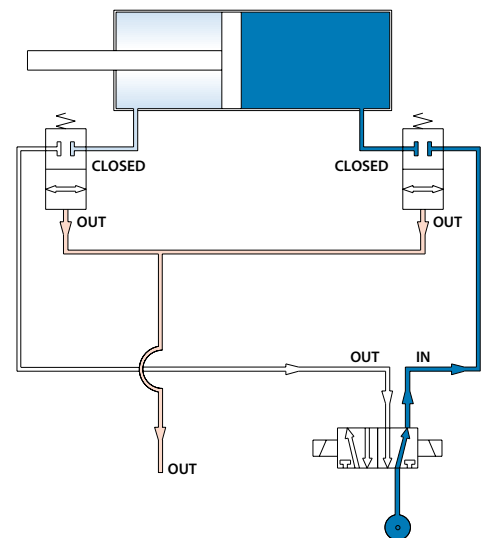
Note, the cylinder circuit and the pilot valve circuit are independent. With a pilot signal applied to the PO block valves and P1 pressure to the directional control valve the cylinder will extend and retract normally.



■ Pilot
■ Feeding

Pneumatic circuit - Cylinder at Rest

Remove the pilot signal pressure from the PO block valves to lock the cylinder in place even under load conditions.



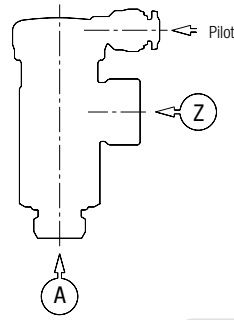


BLOCK VALVE SPECIFICATIONS



Pilot Pressure

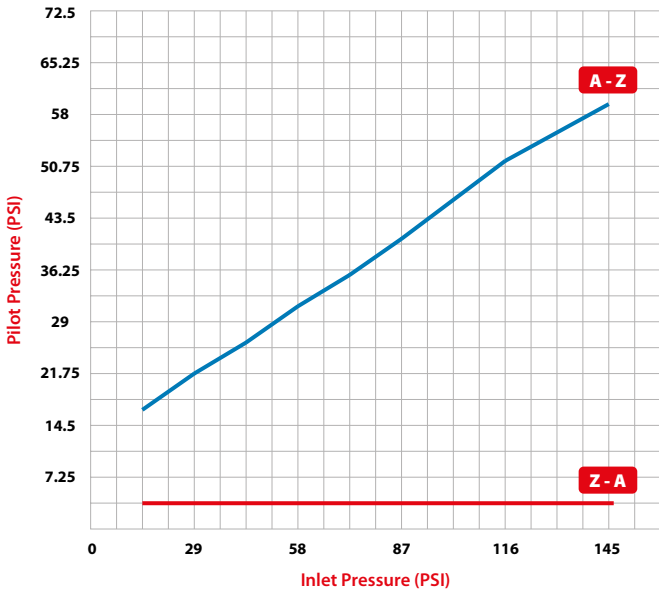
Minimum pilot pressure is required to ensure proper valve function and is based on inlet pressure.



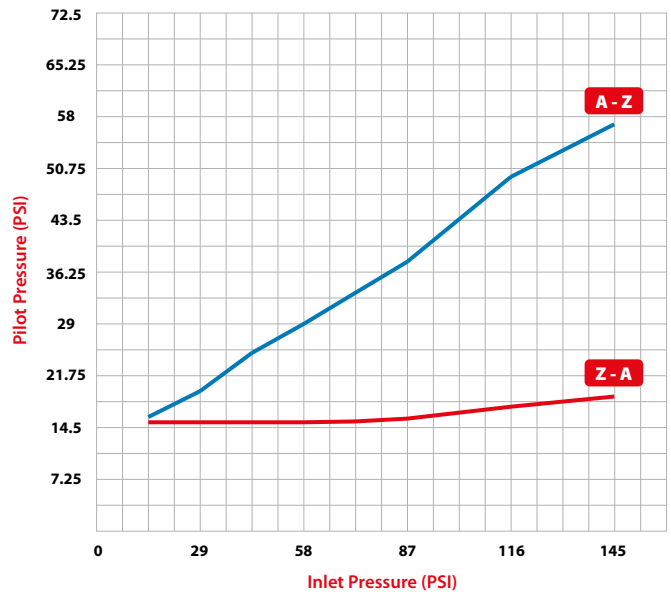
Pilot Pressure

Inlet Pressure

UNI-DIRECTIONAL
82880
1/8" - 1/4"

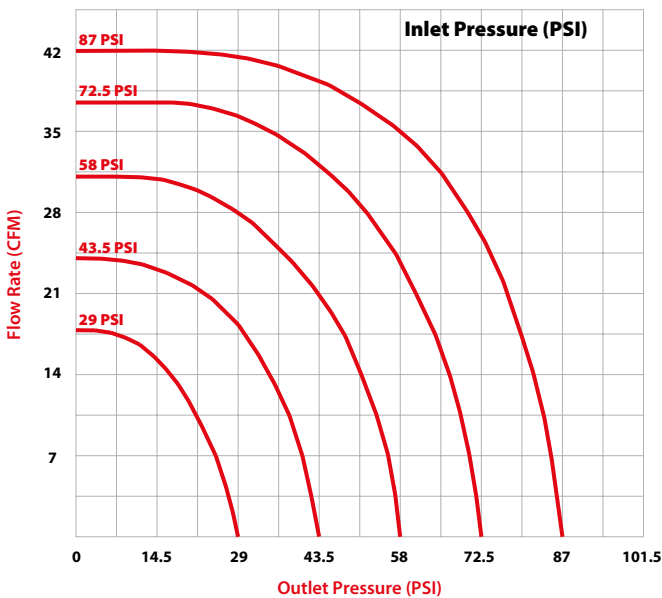


BI-DIRECTIONAL
82890
1/8" - 1/4"



Flow Rates

82880 - 82890
1/8"



82880 - 82890
1/4"

