




85 Series

 85110 Pg. 5.5	 85110 Pg. 5.5	 85170 Pg. 5.5	 85210 Pg. 5.5	 85210 Pg. 5.5	 85222 Pg. 5.6	 85222 Pg. 5.6	 85320 Pg. 5.6	 85320 Pg. 5.6
 85340 Pg. 5.7	 85360 Pg. 5.7	 85040 Pg. 5.7	 85130 Pg. 5.7	 85140 Pg. 5.8	 85150 Pg. 5.8	 85160 Pg. 5.8	 85180 Pg. 5.8	 85230 Pg. 5.8
 85240 Pg. 5.9	 85310 Pg. 5.9	 85330 Pg. 5.9	 85350 Pg. 5.9	 85500 Pg. 5.10	 85510 Pg. 5.10	 85520 Pg. 5.10	 85620 Pg. 5.10	 85700 Pg. 5.11
 85705 Pg. 5.11	 88610B Pg. 5.11	 50980 Pg. 5.12	 55625 Pg. 5.12					

For STRAIGHT FITTINGS see 87-88 series

 87000 Pg. 3.5	 87010 Pg. 3.5	 88007 Pg. 3.7
--	--	--

**NYLON PUSH-TO-CONNECT FITTINGS
FOR INCH TUBE**

85 Series

85000



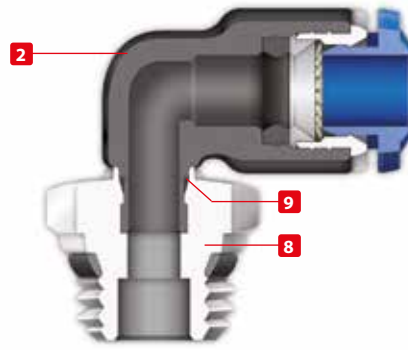
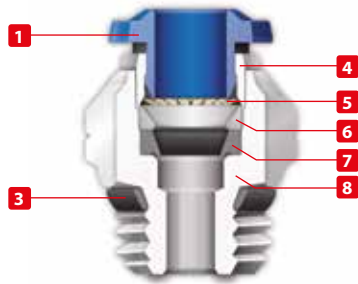


TECHNICAL CHARACTERISTICS



Reference Standard

- 1907/2006
REACH ✓
- 2011/65/CE
RoHS ✓
- PED
2014/68/UE
- ISO
14743:2004
- SILICON
FREE



Pressure Rating

Vacuum ~ 290 PSI
-0.99 bar ~ 20 bar
-0.099 MPa ~ 2.0 MPa



Temperatures Rating

NBR
-4° F ~ 176° F
-20° C ~ 80° C



Media

- Compressed air
- Vacuum
- Water



Applications

- Pneumatic Automation
- Automotive
- Textile, Packaging
- Compressed Air Circuit
- Vacuum



Advantages

- 1 The 303 Stainless Steel gripper ensures a tight clamp for tubes of any material without damaging the tube's surface. The secure connection between the tube and the fitting will hold up to severe conditions such as impact and vibrations.
- 2 The shape of the safety ring and the molded seal perfectly seal off the tube, creating a vacuum.
- 3 Series with several types of threads:
SWIFFIT
UNF
- 4 All straight fittings can be tightened with an Allen wrench because of our internal hex design. This enables the end user to tighten the fitting in spaces too small for an openend wrench.



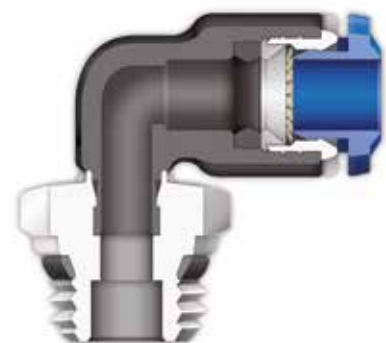
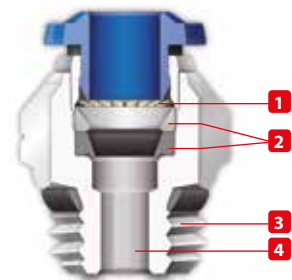
Component Parts and Materials

- 1 Composite Release Collet
- 2 Nylon Body
- 3 NBR Thread Seal
- 4 Nickel Plated Brass Sleeve
- 5 303 Stainless Steel Gripper
- 6 Technopolymer Safety Ring
- 7 NBR Molded Seal
- 8 Nickel Plated Thread Brass Body
- 9 NBR Seal



Tubing Compatibility

Nylon 6 - 11 -12
 Polyethylene
 Polyurethane ("98 Shore A for best result)
 PTFE
 FEP

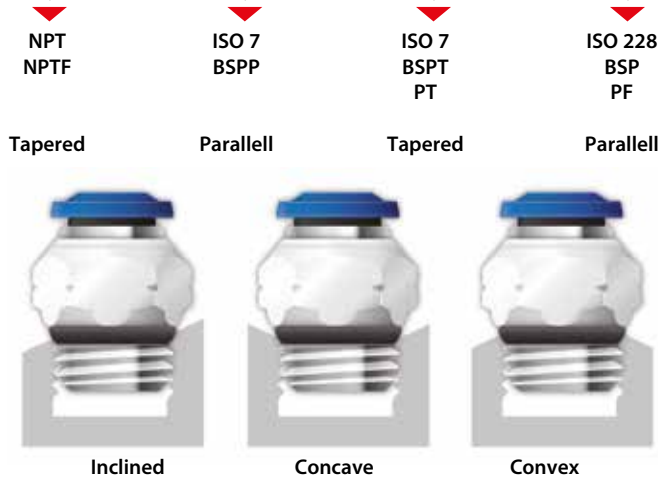




THREADS & ADVANTAGES



One fitting... Endless possibilities



Our **SWIFFFIT** universal fittings also work on non-flat surfaces without compromising an air-tight seal.

The **SWIFFFIT** Universal Thread has been designed to offer the following advantages to the end users:

- Reduced overall length
- Smaller hex dimensions compared to parallel threads
- Fits with various parallel and tapered threads
- All **SWIFFFIT** fittings have been equipped with threads and an NBR thread seal that will universally connect to all thread types.

Torque Specifications

Recommended Torque		
Thread Size	Min.	Max.
1/8	5 Nm	7 Nm
1/4	5 Nm	7 Nm
3/8	5 Nm	7 Nm
1/2	5 Nm	7 Nm



UNF Threads



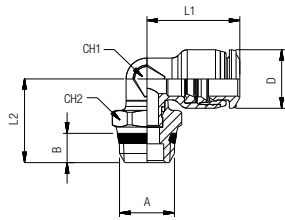
The **UNF** Thread has been designed to offer the following advantages to the end users:

- Standard USA design
- Designed for use in UNF connections with an integrated NBR o-ring that provides a perfect seal

Torque Specifications

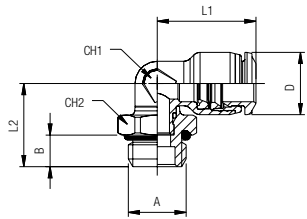
Recommended Torque		
Thread Size	Min.	Breaking Torque
10/32	0.8 Nm	3.2 Nm

85110
SWIVEL ELBOW



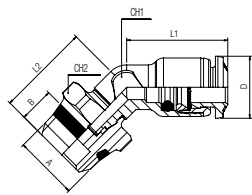
* For part numbers with 10-32 threads

UNF



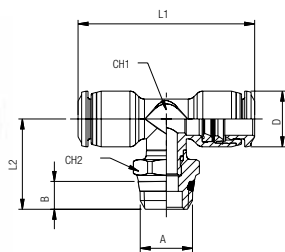
Part No.	Tube	A	B	L1	L2	CH1	CH2	D
85110-02-02	1/8	1/8	.216 (5.5)	.610 (15)	.649 (15.5)	.275 (7)	.511 (13)	.393 (10)
85110-02-04	1/8	1/4	.275 (7)	.610 (15)	.708 (18)	.275 (7)	.591 (15)	.393 (10)
*85110-53-32	5/32 (4)	10/32	.157 (4)	.649 (16.5)	.567 (14.5)	.275 (7)	.354 (9)	.393 (10)
85110-53-02	5/32 (4)	1/8	.216 (5.5)	.649 (16.5)	.649 (15.5)	.275 (7)	.511 (13)	.393 (10)
85110-53-04	5/32 (4)	1/4	.275 (7)	.649 (16.5)	.708 (18)	.275 (7)	.591 (15)	.393 (10)
*85110-04-32	1/4	10/32	.157 (4)	.807 (20.5)	.610 (15.5)	.354 (9)	.354 (9)	.492 (12.5)
85110-04-02	1/4	1/8	.216 (5.5)	.807 (20.5)	.688 (17.5)	.354 (9)	.511 (13)	.492 (12.5)
85110-04-04	1/4	1/4	.275 (7)	.807 (20.5)	.748 (19)	.354 (9)	.591 (15)	.492 (12.5)
85110-04-06	1/4	3/8	.295 (7.5)	.807 (20.5)	.787 (20)	.354 (9)	.669 (17)	.492 (12.5)
85110-04-08	1/4	1/2	.354 (9)	.807 (20.5)	.866 (22)	.354 (9)	.826 (21)	.492 (12.5)
85110-05-02	5/16 (8)	1/8	.216 (5.5)	.866 (22)	.728 (18.5)	.394 (10)	.511 (13)	.551 (14)
85110-05-04	5/16 (8)	1/4	.275 (7)	.866 (22)	.787 (20)	.394 (10)	.591 (15)	.551 (14)
85110-05-06	5/16 (8)	3/8	.295 (7.5)	.866 (22)	.807 (20.5)	.394 (10)	.669 (17)	.551 (14)
85110-05-08	5/16 (8)	1/2	.354 (9)	.866 (22)	.905 (23)	.394 (10)	.826 (21)	.551 (14)
85110-06-04	3/8	1/4	.275 (7)	1.043 (26.5)	.866 (22)	.551 (13)	.629 (16)	.669 (17)
85110-06-06	3/8	3/8	.295 (7.5)	1.043 (26.5)	.866 (22)	.551 (13)	.669 (17)	.669 (17)
85110-06-08	3/8	1/2	.354 (9)	1.043 (26.5)	.964 (24.5)	.551 (13)	.826 (21)	.669 (17)
85110-08-04	1/2	1/4	.275 (7)	1.200 (30.5)	.905 (23)	.629 (16)	.629 (16)	.787 (20)
85110-08-06	1/2	3/8	.295 (7.5)	1.200 (30.5)	.905 (23)	.629 (16)	.669 (17)	.787 (20)
85110-08-08	1/2	1/2	.354 (9)	1.200 (30.5)	1.003 (25.5)	.629 (16)	.826 (21)	.787 (20)

85170
45° SWIVEL ELBOW



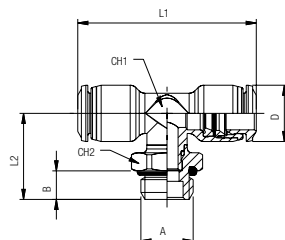
Part No.	Tube	A	B	L1	L2	CH1	CH2	D
85170-53-02	5/32 (4)	1/8	.217 (5.5)	.492 (12.5)	.650 (16.5)	.276 (7)	.512 (13)	.394 (10)
85170-04-02	1/4	1/8	.217 (5.5)	.807 (20.5)	.689 (17.5)	.354 (9)	.512 (13)	.472 (12)
85170-04-04	1/4	1/4	.276 (7)	.807 (20.5)	.744 (18.9)	.354 (9)	.591 (15)	.472 (12)
85170-05-02	5/16 (8)	1/8	.217 (5.5)	.866 (22)	.728 (18.5)	.394 (10)	.512 (13)	.551 (14)
85170-05-04	5/16 (8)	1/4	.276 (7)	.866 (22)	.787 (20)	.394 (10)	.591 (15)	.551 (14)
85170-05-06	5/16 (8)	3/8	.295 (7.5)	.866 (22)	.807 (20.5)	.394 (10)	.669 (17)	.551 (14)
85170-06-04	3/8	1/4	.276 (7)	1.043 (26.5)	.858 (21.8)	.512 (13)	.630 (16)	.669 (17)
85170-06-06	3/8	3/8	.295 (7.5)	1.043 (26.5)	.858 (21.8)	.512 (13)	.669 (17)	.669 (17)
85170-06-08	3/8	1/2	.354 (9)	1.043 (26.5)	.964 (24.5)	.512 (13)	.827 (21)	.669 (17)
85170-08-04	1/2	1/4	.276 (7)	1.181 (30)	.909 (23.1)	.630 (16)	.630 (16)	.787 (20)
85170-08-06	1/2	3/8	.295 (7.5)	1.181 (30)	.909 (23.1)	.630 (16)	.669 (17)	.787 (20)
85170-08-08	1/2	1/2	.354 (9)	1.181 (30)	1.003 (25.5)	.630 (16)	.827 (21)	.787 (20)

85210
SWIVEL BRANCH TEE



* For part numbers with 10-32 threads

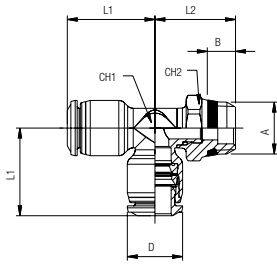
UNF



Part No.	Tube	A	B	L1	L2	CH1	CH2	D
85210-02-02	1/8	1/8	.216 (5.5)	1.200 (30.5)	.728 (18.5)	.275 (7)	.511 (13)	.393 (10)
85210-02-04	1/8	1/4	.275 (7)	1.200 (30.5)	.787 (20)	.275 (7)	.590 (15)	.393 (10)
*85210-53-32	5/32 (4)	10/32	.157 (4)	1.200 (30.5)	.629 (16)	.275 (7)	.354 (9)	.393 (10)
85210-53-02	5/32 (4)	1/8	.216 (5.5)	1.299 (33)	.728 (18.5)	.275 (7)	.511 (13)	.393 (10)
85210-53-04	5/32 (4)	1/4	.275 (7)	1.299 (33)	.787 (20)	.275 (7)	.590 (15)	.393 (10)
*85210-04-32	1/4	10/32	.157 (4)	1.594 (40.5)	.610 (15.5)	.354 (9)	.354 (9)	.492 (12.5)
85210-04-02	1/4	1/8	.216 (5.5)	1.594 (40.5)	.787 (20)	.354 (9)	.511 (13)	.492 (12.5)
85210-04-04	1/4	1/4	.275 (7)	1.594 (40.5)	.846 (21.5)	.354 (9)	.590 (15)	.492 (12.5)
85210-05-02	5/16 (8)	1/8	.216 (5.5)	1.732 (44)	.826 (21)	.394 (10)	.511 (13)	.551 (14)
85210-05-04	5/16 (8)	1/4	.275 (7)	1.732 (44)	.885 (22.5)	.394 (10)	.590 (15)	.551 (14)
85210-05-06	5/16 (8)	3/8	.295 (7.5)	1.732 (44)	.905 (23)	.394 (10)	.669 (17)	.551 (14)
85210-06-04	3/8	1/4	.275 (7)	2.086 (53)	1.023 (26)	.551 (13)	.629 (16)	.669 (17)
85210-06-06	3/8	3/8	.295 (7.5)	2.086 (53)	1.023 (26)	.551 (13)	.669 (17)	.669 (17)
85210-06-08	3/8	1/2	.354 (9)	2.086 (53)	1.023 (26)	.551 (13)	.826 (21)	.669 (17)
85210-08-04	1/2	1/4	.275 (7)	2.362 (60)	1.062 (27)	.629 (16)	.629 (16)	.787 (20)
85210-08-06	1/2	3/8	.295 (7.5)	2.362 (60)	1.062 (27)	.629 (16)	.669 (17)	.787 (20)
85210-08-08	1/2	1/2	.354 (9)	2.362 (60)	1.161 (29.5)	.629 (16)	.826 (21)	.787 (20)

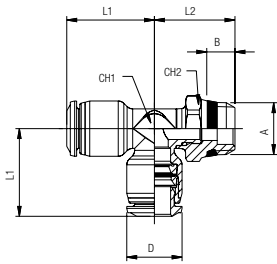
85222

SWIVEL RUN TEE



* For part numbers with 10-32 threads

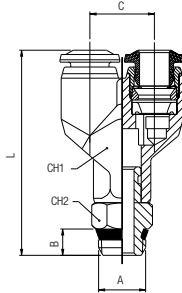
UNF



Part No.	Tube	A	B	L1	L2	CH1	CH2	D
85222-02-02	1/8	1/8	.216 (5,5)	.610 (15)	.708 (18)	.275 (7)	.511 (13)	.393 (10)
85222-02-04	1/8	1/4	.275 (7)	.610 (15)	.767 (19,5)	.275 (7)	.590 (15)	.393 (10)
*85222-53-32	5/32 (4)	10/32	.157 (4)	.649 (16,5)	.629 (16)	.275 (7)	.354 (9)	.393 (10)
85222-53-02	5/32 (4)	1/8	.216 (5,5)	.649 (16,5)	.708 (18)	.275 (7)	.511 (13)	.393 (10)
85222-53-04	5/32 (4)	1/4	.275 (7)	.649 (16,5)	.767 (19,5)	.275 (7)	.590 (15)	.393 (10)
*85222-04-32	1/4	10/32	.157 (4)	.807 (20,5)	.570 (14,5)	.354 (9)	.354 (9)	.492 (12,5)
85222-04-02	1/4	1/8	.216 (5,5)	.807 (20,5)	.688 (17,5)	.354 (9)	.511 (13)	.492 (12,5)
85222-04-04	1/4	1/4	.275 (7)	.807 (20,5)	.748 (19)	.354 (9)	.590 (15)	.492 (12,5)
85222-05-02	5/16 (8)	1/8	.216 (5,5)	.866 (22)	.748 (19)	.394 (10)	.511 (13)	.551 (14)
85222-05-04	5/16 (8)	1/4	.275 (7)	.866 (22)	.807 (20,5)	.394 (10)	.590 (15)	.551 (14)
85222-05-06	5/16 (8)	3/8	.295 (7,5)	.866 (22)	.826 (21)	.394 (10)	.669 (17)	.551 (14)
85222-06-04	3/8	1/4	.275 (7)	1.043 (26,5)	.866 (22)	.551 (13)	.629 (16)	.669 (17)
85222-06-06	3/8	3/8	.295 (7,5)	1.043 (26,5)	.866 (22)	.551 (13)	.669 (17)	.669 (17)
85222-06-08	3/8	1/2	.354 (9)	1.043 (26,5)	.964 (24,5)	.551 (13)	.826 (21)	.669 (17)
85222-08-04	1/2	1/4	.275 (7)	1.200 (30,5)	.905 (23)	.629 (16)	.629 (16)	.787 (20)
85222-08-06	1/2	3/8	.295 (7,5)	1.200 (30,5)	.905 (23)	.629 (16)	.669 (17)	.787 (20)
85222-08-08	1/2	1/2	.354 (9)	1.200 (30,5)	1.003 (25,5)	.629 (16)	.826 (21)	.787 (20)

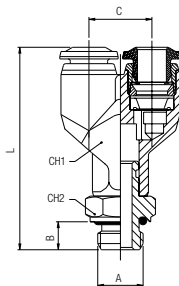
85320

UNION Y



* For part numbers with 10-32 threads

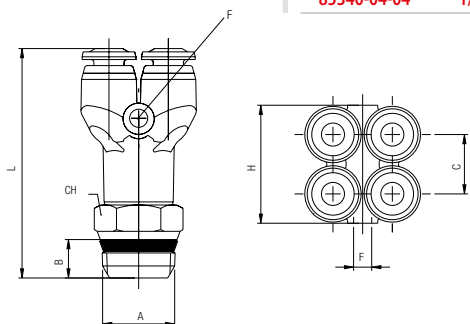
UNF



Part No.	Tube	A	B	C	L	CH1	CH2
*85320-53-32	5/32 (4)	10/32	.157 (4)	.433 (11)	1.437 (36,5)	.393 (10)	.393 (10)
85320-53-02	5/32 (4)	1/8	.216 (5,5)	.433 (11)	1.496 (38)	.393 (10)	.433 (11)
85320-53-04	5/32 (4)	1/4	.275 (7)	.433 (11)	1.594 (40,5)	.393 (10)	.551 (14)
*85320-04-32	1/4	10/32	.157 (4)	.531 (13,5)	1.633 (41,5)	.472 (12)	.393 (10)
85320-04-02	1/4	1/8	.216 (5,5)	.511 (13)	1.692 (43)	.472 (12)	.433 (11)
85320-04-04	1/4	1/4	.275 (7)	.531 (13,5)	1.791 (45,5)	.472 (12)	.551 (14)
85320-05-02	5/16 (8)	1/8	.216 (5,5)	.610 (15,5)	1.850 (47)	.551 (14)	.433 (11)
85320-05-04	5/16 (8)	1/4	.275 (7)	.610 (15,5)	1.929 (49)	.551 (14)	.551 (14)
85320-05-06	5/16 (8)	3/8	.295 (7,5)	.610 (15,5)	1.948 (49,5)	.551 (14)	.669 (17)
85320-06-04	3/8	1/4	.275 (7)	.748 (19)	2.224 (56,5)	.669 (17)	.551 (14)
85320-06-06	3/8	3/8	.295 (7,5)	.748 (19)	2.263 (57,5)	.669 (17)	.669 (17)
85320-06-08	3/8	1/2	.354 (9)	.748 (19)	2.362 (60)	.669 (17)	.826 (21)
85320-08-06	1/2	3/8	.295 (7,5)	.866 (22)	2.618 (66,5)	.787 (20)	.669 (17)
85320-08-08	1/2	1/2	.354 (9)	.866 (22)	2.677 (68)	.787 (20)	.826 (21)

85340

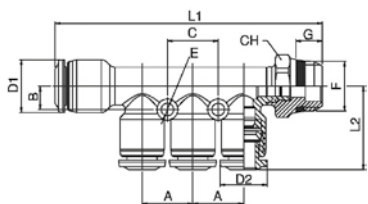
4 POSITION Y



Part No.	Tube	A	B	C	L	H	CH	F
85340-53-02	5/32 (4)	1/8	.217 (5,5)	.425 (10,8)	1.555 (39,5)	.846 (21,5)	.433 (11)	.130 (3,3)
85340-53-04	5/32 (4)	1/4	.276 (7)	.425 (10,8)	1.654 (42)	.846 (21,5)	.551 (14)	.130 (3,3)
85340-04-02	1/4	1/8	.217 (5,5)	.531 (13,5)	1.831 (46,5)	1.064 (27)	.433 (11)	.130 (3,3)
85340-04-04	1/4	1/4	.276 (7)	.531 (13,5)	1.889 (48)	1.064 (27)	.551 (14)	.130 (3,3)

85360

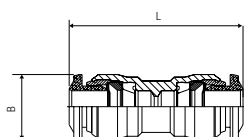
REDUCTION MANIFOLD



Part No.	Tube	F	A	B	C	G	L1	L2	CH	E	D1	D2
85360-04-53-02	1/4-5/32	1/8	.531 (13,5)	.236 (6)	.531 (13,5)	.217 (5,5)	2.757 (70)	.866 (22)	.511 (13)	.130 (3,3)	.551 (14)	.471 (12)
85360-04-53-04	1/4-5/32	1/4	.531 (13,5)	.236 (6)	.531 (13,5)	.276 (7)	2.817 (71,5)	.866 (22)	.591 (15)	.130 (3,3)	.551 (14)	.471 (12)
85360-05-53-02	5/16-5/32	1/8	.531 (13,5)	.236 (6)	.531 (13,5)	.217 (5,5)	2.757 (70)	.866 (22)	.511 (13)	.130 (3,3)	.551 (14)	.471 (12)
85360-05-53-04	5/16-5/32	1/4	.531 (13,5)	.236 (6)	.531 (13,5)	.276 (7)	2.817 (71,5)	.866 (22)	.591 (15)	.130 (3,3)	.551 (14)	.471 (12)
85360-05-04-02	5/16-1/4	1/8	.531 (13,5)	.236 (6)	.531 (13,5)	.217 (5,5)	2.757 (70)	.866 (22)	.511 (13)	.130 (3,3)	.551 (14)	.491 (12,5)
85360-05-04-04	5/16-1/4	1/4	.531 (13,5)	.236 (6)	.531 (13,5)	.276 (7)	2.817 (71,5)	.866 (22)	.591 (15)	.130 (3,3)	.551 (14)	.491 (12,5)
85360-06-04-04	3/8-1/4	1/4	.590 (15)	.276 (7)	.590 (15)	.276 (7)	3.208 (81,5)	.946 (24)	.629 (16)	.130 (3,3)	.669 (17)	.551 (14)
85360-06-04-06	3/8-1/4	3/8	.590 (15)	.276 (7)	.590 (15)	.296 (7,5)	3.208 (81,5)	.946 (24)	.669 (17)	.130 (3,3)	.669 (17)	.551 (14)
85360-06-05-04	3/8-5/16	1/4	.590 (15)	.276 (7)	.590 (15)	.276 (7)	3.208 (81,5)	.906 (23)	.629 (16)	.130 (3,3)	.669 (17)	.551 (14)
85360-06-05-06	3/8-5/16	3/8	.590 (15)	.276 (7)	.590 (15)	.296 (7,5)	3.208 (81,5)	.906 (23)	.669 (17)	.130 (3,3)	.669 (17)	.551 (14)

85040

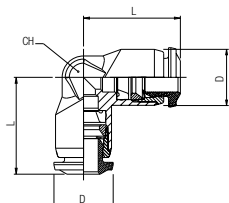
UNION



Part No.	Tube	Tube	B	L
85040-02-02	1/8	1/8	.394 (10)	1.102 (28)
85040-53-53	5/32 (4)	5/32 (4)	.394 (10)	1.220 (31)
85040-04-53	1/4	5/32 (4)	.492 (12,5)	1.358 (34,5)
85040-04-04	1/4	1/4	.492 (12,5)	1.377 (35)
85040-05-53	5/16 (8)	5/32 (4)	1.456 (37)	.551 (14)
85040-05-04	5/16 (8)	1/4	.551 (14)	1.496 (38)
85040-05-05	5/16 (8)	5/16 (8)	.551 (14)	1.456 (37)
85040-06-04	3/8	1/4	.669 (17)	1.751 (44,5)
85040-06-05	3/8	5/16 (8)	.669 (17)	1.751 (44,5)
85040-06-06	3/8	3/8	.669 (17)	1.771 (45)
85040-08-05	1/2	5/16 (8)	1.968 (50)	.787 (20)
85040-08-06	1/2	3/8	.787 (20)	1.968 (50)
85040-08-08	1/2	1/2	.787 (20)	1.929 (49)

85130

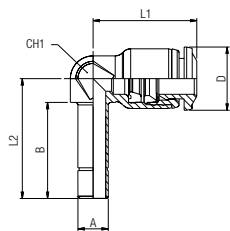
UNION ELBOW



Part No.	Tube	Tube	L	CH	D
85130-02-02	1/8	1/8	.610 (15,5)	.354 (9)	.393 (10)
85130-53-53	5/32 (4)	5/32 (4)	.649 (16,5)	.354 (9)	.393 (10)
85130-04-04	1/4	1/4	.807 (20,5)	.433 (11)	.492 (12,5)
85130-05-04	5/16 (8)	1/4	.886 (22,5)	.551 (14)	.511 (13)
85130-05-05	5/16 (8)	5/16 (8)	.866 (22)	.511 (13)	.551 (14)
85130-06-04	3/8	1/4	1.023 (26)	.669 (17)	.629 (16)
85130-04-05	3/8	5/16 (8)	1.023 (26)	.669 (17)	.629 (16)
85130-06-06	3/8	3/8	1.043 (26,5)	.629 (16)	.669 (17)
85130-04-06	1/2	3/8	1.200 (30,5)	.787 (20)	.748 (19)
85130-08-08	1/2	1/2	1.200 (30,5)	.748 (19)	.787 (20)

85140

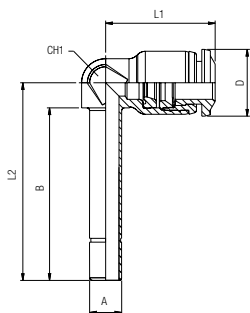
ELBOW PLUG IN



Part No.	Tube	A	B	L1	L2	CH1	D
85140-53-53	5/32 (4)	5/32 (4)	.669 (17)	.650 (16,5)	.819 (20,8)	.276 (7)	.394 (10)
85140-53-04	5/32 (4)	1/4	.748 (19)	.650 (16,5)	.913 (23)	.276 (7)	.394 (10)
85140-04-53	1/4	5/32 (4)	.669 (17)	.807 (20,5)	.846 (21,5)	.354 (9)	.492 (12,5)
85140-04-04	1/4	1/4	.748 (19)	.807 (20,5)	.933 (23,5)	.354 (9)	.492 (12,5)
85140-04-05	1/4	5/16 (8)	.787 (20)	.886 (22,5)	1.024 (26)	.394 (10)	.551 (14)
85140-05-05	5/16 (8)	5/16 (8)	.787 (20)	.866 (22)	1.024 (26)	.394 (10)	.551 (14)
85140-05-06	5/16 (8)	3/8	.866 (22)	.866 (22)	1.083 (27,5)	.394 (10)	.551 (14)
85140-06-06	3/8	3/8	.886 (22,5)	1.043 (26,5)	1.181 (30)	.512 (13)	.669 (17)
85140-06-08	3/8	1/2	.964 (24,5)	1.043 (26,5)	1.260 (32)	.512 (13)	.669 (17)
85140-08-08	1/2	1/2	1.004 (25,5)	1.181 (30)	1.319 (33,5)	.630 (16)	.787 (20)

85150

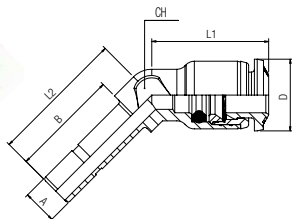
ELBOW PLUG IN



Part No.	Tube	A	B	L1	L2	CH1	D
85150-53-53	5/32 (4)	5/32 (4)	1.102 (28)	.650 (16,5)	1.252 (31,8)	.276 (7)	.394 (10)
85150-53-04	5/32 (4)	1/4	1.200 (30,5)	.650 (16,5)	1.359 (34,5)	.276 (7)	.394 (10)
85150-04-53	1/4	5/32 (4)	1.181 (30)	.807 (20,5)	1.359 (34,5)	.354 (9)	.492 (12,5)
85150-04-04	1/4	1/4	1.272 (32,3)	.807 (20,5)	1.457 (37)	.354 (9)	.492 (12,5)
85150-05-05	5/16 (8)	5/16 (8)	1.417 (36)	.866 (22)	1.654 (42)	.394 (10)	.551 (14)
85150-05-06	5/16 (8)	3/8	1.477 (37,5)	.866 (22)	1.694 (43)	.394 (10)	.551 (14)
85150-06-06	3/8	3/8	1.606 (40,8)	1.043 (26,5)	1.902 (48,3)	.512 (13)	.669 (17)
85150-06-08	3/8	1/2	1.692 (43)	1.043 (26,5)	1.988 (50,5)	.512 (13)	.669 (17)
85150-08-08	1/2	1/2	1.850 (47)	1.220 (31)	2.165 (55)	.630 (16)	.787 (20)

85160

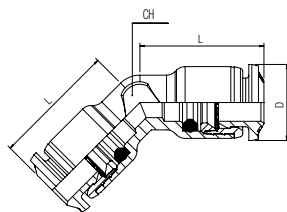
45° ELBOW PLUG IN



Part No.	Tube	A	B	L1	L2	CH	D
85160-53	5/32 (4)	5/32 (4)	.669 (17)	.492 (12,5)	.827 (21)	.276 (7)	.394 (10)
85160-04	1/4	1/4	.748 (19)	.807 (20,5)	.925 (23,5)	.354 (9)	.472 (12)
85160-05	5/16 (8)	5/16 (8)	.787 (20)	.866 (22)	.984 (25)	.394 (10)	.551 (14)
85160-06	3/8	3/8	.886 (22,5)	1.043 (26,5)	1.181 (30)	.512 (13)	.669 (17)
85160-08	1/2	1/2	1.004 (25,5)	1.181 (30)	1.319 (33,5)	.630 (16)	.787 (20)

85180

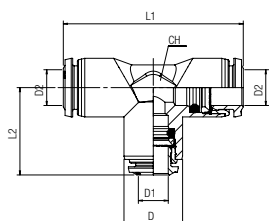
45° UNION



Part No.	Tube	L	CH	D
85180-53	5/32 (4)	.650 (16,5)	.276 (7)	.394 (10)
85180-04	1/4	.807 (20,5)	.354 (9)	.472 (12)
85180-05	5/16 (8)	.866 (22)	.394 (10)	.551 (14)
85180-06	3/8	1.043 (26,5)	.512 (13)	.669 (17)
85180-08	1/2	1.181 (30)	.630 (16)	.787 (20)

85230

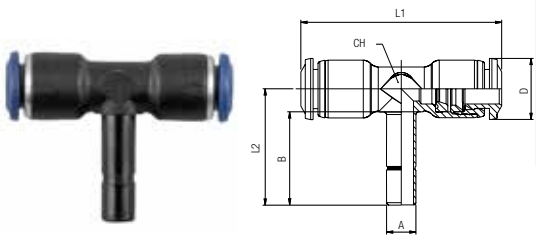
UNION TEE



Part No.	Tube	L1	L2	CH	D	D1	D2
85230-02	1/8	1.220 (31)	.610 (15,5)	.354 (9)	.394 (10)	.118 (3)	.118 (3)
85230-53	5/32 (4)	1.300 (33)	.650 (16,5)	.354 (9)	.394 (10)	.157 (4)	.157 (4)
85230-53-04-53	5/32 (4)-1/4-5/32 (4)	1.574 (40)	.807 (20,5)	.433 (11)	.492 (12,5)	.236 (6)	.157 (4)
85230-04-53-04	1/4-5/32 (4)-1/4	1.614 (41)	.787 (20)	.433 (11)	.492 (12,5)	.157 (4)	.236 (6)
85230-04	1/4	1.614 (41)	.807 (20,5)	.433 (11)	.492 (12,5)	.236 (6)	.236 (6)
85230-05-04-05	5/16 (8)-1/4-5/16 (8)	1.763 (45)	.886 (22,5)	.512 (13)	.551 (14)	.236 (6)	.314 (8)
85230-05	5/16 (8)	1.723 (44)	.866 (22)	.512 (13)	.551 (14)	.314 (8)	.314 (8)
85230-05-06-05	5/16 (8)-3/8-5/16 (8)	2.047 (52)	1.043 (26,5)	.630 (16)	.669 (17)	.394 (10)	.314 (8)
85230-06-05-06	3/8-5/16 (8)-3/8	2.087 (53)	1.024 (26)	.630 (16)	.669 (17)	.314 (8)	.394 (10)
85230-06	3/8	2.087 (53)	1.044 (26,5)	.630 (16)	.669 (17)	.394 (10)	.394 (10)
85230-06-08-06	3/8-1/2-3/8	2.343 (59,5)	1.200 (30,5)	.748 (19)	.787 (20)	.472 (12)	.394 (10)
85230-08-06-08	1/2-3/8-1/2	2.422 (61,5)	1.181 (30)	.748 (19)	.787 (20)	.394 (10)	.472 (12)
85230-08	1/2	2.422 (61,5)	1.181 (30)	.748 (19)	.787 (20)	.472 (12)	.472 (12)

85240

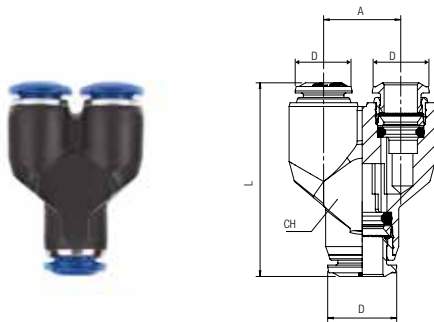
TEE PLUG IN



Part No.	Tube	A	B	L1	L2	CH	D
85240-53-53	5/32 (4)	5/32 (4)	.669 (17)	1.299 (33)	.815 (20,7)	.276 (7)	.394 (10)
85240-53-04	5/32 (4)	1/4	.748 (19)	1.299 (33)	.886 (22,5)	.276 (7)	.394 (10)
85240-04-53	1/4	5/32 (4)	.669 (17)	1.614 (41)	.846 (21,5)	.354 (9)	.492 (12,5)
85240-04-04	1/4	1/4	.748 (19)	1.614 (41)	.933 (23,7)	.354 (9)	.492 (12,5)
85240-05-05	5/16 (8)	5/16 (8)	.787 (20)	1.732 (44)	1.024 (26)	.394 (10)	.551 (14)
85240-05-06	5/16 (8)	3/8	.886 (22,5)	1.732 (44)	1.102 (28)	.394 (10)	.551 (14)
85240-06	3/8	3/8	.886 (22,5)	2.087 (53)	1.181 (30)	.512 (13)	.669 (17)
85240-53-08	3/8	1/2	.983 (25)	2.087 (53)	1.259 (32)	.512 (13)	.669 (17)
85240-08-08	1/2	1/2	1.003 (25,5)	2.422 (61,5)	1.319 (33,5)	.629 (16)	.787 (20)

85310

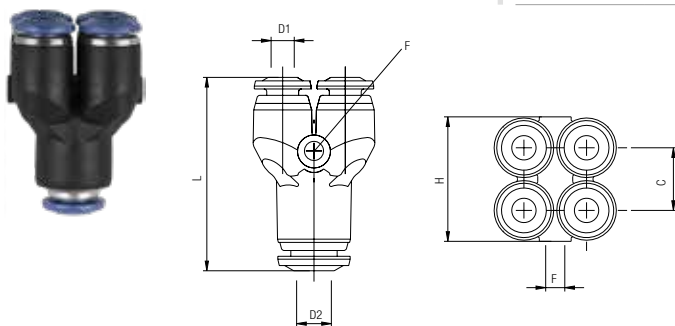
UNION Y



Part No.	Tube	Tube	L	A	CH	D
85310-53-53	5/32 (4)	5/32 (4)	1.240 (31,5)	.433 (11)	.393 (10)	.393 (10)
85310-04-53	1/4	5/32 (4)	.532 (13,5)	1.437 (36,5)	.472 (12)	.492(12,5)
85310-04-04	1/4	1/4	1.456 (37)	.531 (13,5)	.472 (12)	.492(12,5)
85310-05-04	5/16 (8)	1/4	.610 (15,5)	1.614 (41)	.551 (14)	.551 (14)
85310-05-05	5/16 (8)	5/16 (8)	1.574 (40)	.610 (15,5)	.551 (14)	.551 (14)
85310-06-06	3/8	3/8	1.909 (48,5)	.748 (19)	.669 (17)	.708 (18)
85310-08-05	1/2	5/16 (8)	.866 (22)	2.263 (57,5)	.787 (20)	.787 (20)
85310-08-08	1/2	1/2	2.322 (59)	.866 (22)	.787 (20)	.787 (20)

85330

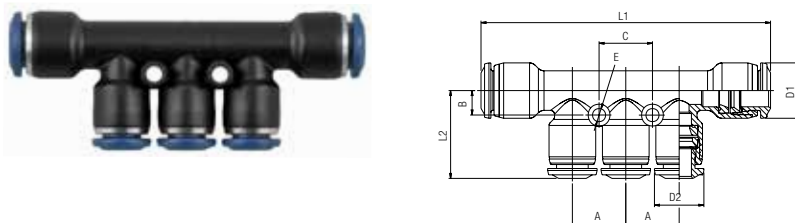
4 POSITION Y



Part No.	D1	D2	C	L	F	H
85330-53-53	5/32 (4)	5/32 (4)	.425 (10,8)	1.319 (33,5)	.130 (3,3)	.846 (21,5)
85330-53-04	5/32 (4)	1/4	.433 (11)	1.359 (34,5)	.130 (3,3)	.846 (21,5)
85330-04-04	1/4	1/4	.531 (13,5)	1.555 (39,5)	.130 (3,3)	1.064 (27)
85330-04-05	1/4	5/16 (8)	.531 (13,5)	1.575 (40)	.130 (3,3)	1.064 (27)

85350

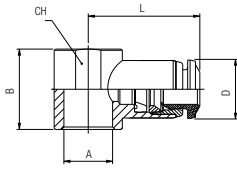
REDUCTION MANIFOLD



Part No.	Tube	A	B	L1	L2	C	D1	D2	E
85350-04-53	1/4-5/32(4)	.531 (13,5)	.236 (6)	2.913 (74)	.866 (22)	.531 (13,5)	.551 (14)	.472 (12)	.130 (3,3)
85350-05-53	5/16(8)-5/32(4)	.531 (13,5)	.236 (6)	2.873 (73)	.866 (22)	.531 (13,5)	.551 (14)	.472 (12)	.130 (3,3)
85350-05-04	5/16(8)-1/4	.531 (13,5)	.236 (6)	2.873 (73)	.886 (22,5)	.531 (13,5)	.551 (14)	.492(12,5)	.130 (3,3)
85350-06-04	3/8-1/4	.591 (15)	.276 (7)	3.267 (83)	.946 (24)	.590 (15)	.669 (17)	.551 (14)	.130 (3,3)
85350-06-05	3/8-5/16(8)	.591 (15)	.276 (7)	3.267 (83)	.906 (23)	.590 (15)	.669 (17)	.551 (14)	.130 (3,3)

85500

SINGLE BANJO BODY

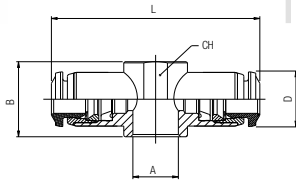


Part No.	Tube	A	B	L	CH	D
85500-02-M6	1/8	M6	.551 (14)	.807 (20,5)	.354 (9)	.394 (10)
85500-02-02	1/8	1/8	.649 (16,5)	.807 (20,5)	.551 (14)	.394 (10)
85500-53-M5	5/32 (4)	M5	.551 (14)	.767 (19,5)	.354 (9)	.394 (10)
85500-53-M6	5/32 (4)	M6	.551 (14)	.767 (19,5)	.354 (9)	.394 (10)
85500-53-02	5/32 (4)	1/8	.649 (16,5)	.846 (21,5)	.551 (14)	.394 (10)
85500-53-04	5/32 (4)	1/4	.728 (18,5)	.925 (23,5)	.708 (18)	.394 (10)
85500-04-M5	1/4	M5	.551 (14)	.826 (21)	.354 (9)	.472 (12)
85500-04-M6	1/4	M6	.551 (14)	.826 (21)	.354 (9)	.472 (12)
85500-04-02	1/4	1/8	.649 (16,5)	.905 (23)	.551 (14)	.472 (12)
85500-04-04	1/4	1/4	.728 (18,5)	1.003 (25,5)	.708 (18)	.472 (12)
85500-05-02	5/16 (8)	1/8	.649 (16,5)	.925 (23,5)	.551 (14)	.551 (14)
85500-05-04	5/16 (8)	1/4	.728 (18,5)	1.023 (26)	.708 (18)	.551 (14)
85500-05-3/8	5/16 (8)	3/8	.866 (22)	1.082 (27,5)	.826 (21)	.551 (14)
85500-06-04	3/8	1/4	.728 (18,5)	1.221 (31)	.708 (18)	.669 (17)
85500-06-06	3/8	3/8	.866 (22)	1.200 (30,5)	.826 (21)	.669 (17)
85500-08-06	1/2	3/8	.866 (22)	1.279 (32,5)	.826 (21)	.787 (20)
85500-08-08	1/2	1/2	1.023 (26)	1.377 (35)	1.023 (26)	.787 (20)

For BANJO STEM assemblies see 10.7/10.8/10.9

85510

DOUBLE BANJO BODY

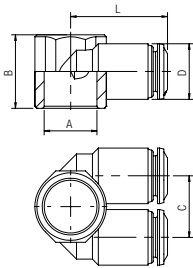


Part No.	Tube	A	B	L	CH	D
85510-53-M5	5/32 (4)	M5	.551 (14)	1.535 (39)	.354 (9)	.394 (10)
85510-53-02	5/32 (4)	1/8	.649 (16,5)	1.692 (43)	.551 (14)	.394 (10)
85510-04-02	1/4	1/8	.649 (16,5)	1.811 (46)	.551 (14)	.472 (12)
85510-04-04	1/4	1/4	.728 (18,5)	2.007 (51)	.708 (18)	.472 (12)
85510-05-02	5/16 (8)	1/8	.649 (16,5)	1.850 (47)	.551 (14)	.551 (14)
85510-05-04	5/16 (8)	1/4	.728 (18,5)	2.047 (52)	.708 (18)	.551 (14)

For BANJO STEM assemblies see 10.7/10.8/10.9

85520

DOUBLE BANJO BODY

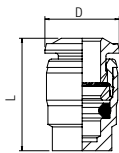


Part No.	Tube	A	B	C	L	D
85520-4-1/8	5/32 (4)	1/8	.650 (16,5)	.512 (13)	.827 (21)	.472 (12)
85520-4-1/4	5/32 (4)	1/4	.728 (18,5)	.610 (15,5)	.945 (24)	.551 (14)
85520-1/4-1/8	1/4	1/8	.650 (16,5)	.512 (13)	.846 (21,5)	.492 (12,5)
85520-1/4-1/4	1/4	1/4	.728 (18,5)	.610 (15,5)	.965 (24,5)	.551 (14)
85520-1/4-3/8	1/4	3/8	.866 (22)	.531 (13,5)	.984 (25)	.492 (12,5)
85520-8-1/4	5/16 (8)	1/4	.728 (18,5)	.610 (15,5)	.965 (24,5)	.551 (14)
85520-8-3/8	5/16 (8)	3/8	.866 (22)	.748 (19)	1.102 (28)	.669 (17)
85520-3/8-3/8	3/8	3/8	.866 (22)	.748 (19)	1.102 (28)	.669 (17)

For BANJO STEM assemblies see 10.7/10.8/10.9

85620

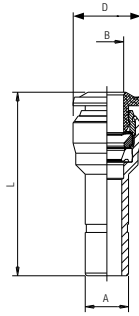
TERMINAL PLUG



Part No.	Tube	D	L
85620-4	5/32 (4)	.393 (10)	.708 (18)
85620-1/4	1/4	.492 (12,5)	.787 (20)
85620-8	5/16 (8)	.551 (14)	.846 (21,5)
85620-3/8	3/8	.669 (17)	.984 (25)
85620-08	1/2	.787 (20)	1.082 (27,5)

85700

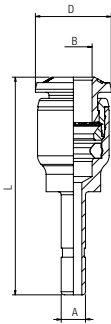
TUBE REDUCER



Part No.	A	B	L	D
85700-04-53	1/4	5/32 (4)	1.339 (34)	.394 (10)
85700-05-53	5/16 (8)	5/32 (4)	1.496 (38)	.472 (12)
85700-05-04	5/16 (8)	1/4	1.535 (39)	.492 (12,5)
85700-06-04	3/8	1/4	1.673 (42,5)	.492 (12,5)
85700-06-05	3/8	5/16 (8)	1.654 (42)	.551 (14)
85700-08-04	1/2	1/4	1.516 (38,5)	.492 (12,5)
85700-08-05	1/2	5/16 (8)	1.634 (41,5)	.551 (14)
85700-08-06	1/2	3/8	1.909 (48,5)	.669 (17)

85705

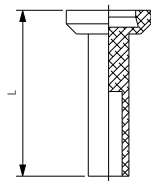
TUBE EXPANDER



Part No.	A	B	L	D
85705-53-04	5/32 (4)	1/4	1.417 (36)	.472 (12)
85705-04-05	1/4	5/16 (8)	1.516 (38,5)	.551 (14)
85705-04-06	1/4	3/8	1.654 (42)	.669 (17)
85705-05-06	5/16 (8)	3/8	1.693 (43)	.669 (17)
85705-06-08	3/8	1/2	1.89 (48)	.787 (20)

88610B

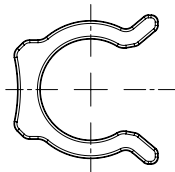
NYLON PLUG



Part No.	Tube	L
88610B-02	1/8	.708 (18)
88610B-53	5/32 (4)	.925 (23,5)
88610B-04	1/4	.964 (24,5)
88610B-05	5/16 (8)	1.023 (26)
88610B-06	3/8	1.122 (28,5)
88610B-08	1/2	1.122 (28,5)

50980

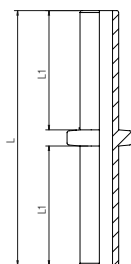
SECURITY CLIP



Part No.	Tube
50980-53	5/32 (4)
50980-04	1/4 (6)
50980-05	5/16 (8)
50980-06	3/8 (10)
50980-08	1/2 (12)

55625

DOUBLE JOINT



Part No.	Tube	L	L1
55625-4	5/32 (4)	1.358 (34,5)	.630 (16)
55625-6	1/4 (6)	1.555 (39,5)	.728 (18,5)
55625-8	5/16 (8)	1.654 (42)	.768 (19,5)
55625-10	3/8 (10)	2.028 (51,5)	.945 (24)
55625-12	1/2 (12)	2.362 (60)	1.102 (28)