

Ball Valves



86300

Pg. 10.6



86310

Pg. 10.6



86320

Pg. 10.6



86330

Pg. 10.6



86700

Pg. 10.6



86710

Pg. 10.7



86720

Pg. 10.7



6300

Pg. 10.7



6310

Pg. 10.7



6400

Pg. 10.8



6410

Pg. 10.8



6560

Pg. 10.8



6570

Pg. 10.8



86900

Pg. 10.9



86910

Pg. 10.9



86915

Pg. 10.9



86920

Pg. 10.9

Stainless Steel Ball Valves



66300

Pg. 10.10



66310

Pg. 10.10



66560

Pg. 10.11



66570

Pg. 10.11

CHROME PLATED BRASS BALL VALVES



Ball Valves



TECHNICAL CHARACTERISTICS



Reference Standard

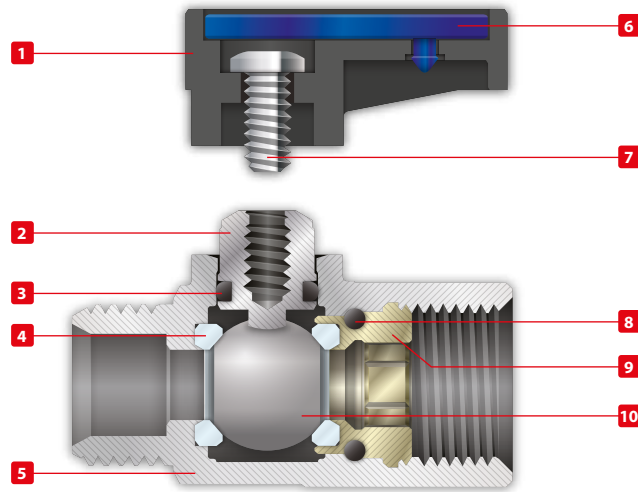
1907/2006
REACH ✓

2011/65/CE
RoHS ✓

PED
2014/68/UE

BS EN
331:2015

SILICON
FREE



Pressure Rating

Vacuum ~ 250 PSI
-0.99 bar ~ 20 bar
-0.099 MPa ~ 2.0 MPa



Temperatures

NBR	EPDM <i>on request</i>	FKM <i>on request</i>
-4° F ~ 176° F	-40° F ~ 266° F	5° F ~ 266° C
-20° C ~ 80° C	-40° C ~ 130° C	-15° C ~ 130° C



Component Parts and Materials

- 1 PA66 Glass Reinforced Handle
- 2 Chrome Nickel Plated Brass Spindle
- 3 NBR O-Ring Seal
- 4 PTFE Seats
- 5 Chrome Nickel Plated Brass Body
- 6 Acetalic Resin Plate
- 7 Steel Screw
- 8 NBR O-Ring Seal
- 9 Brass Fitting
- 10 Chrome Nickel Plated Brass Ball



Media

- Compressed air
- Water
- Oils
- Rated for gases, consult factory for details



Threads

Gas in conformity with ISO7.1, BS 21, DIN 2999.
Parallel gas in conformity with ISO 228 Class A.



PRESSURE - TEMPERATURE RATINGS DIAGRAM

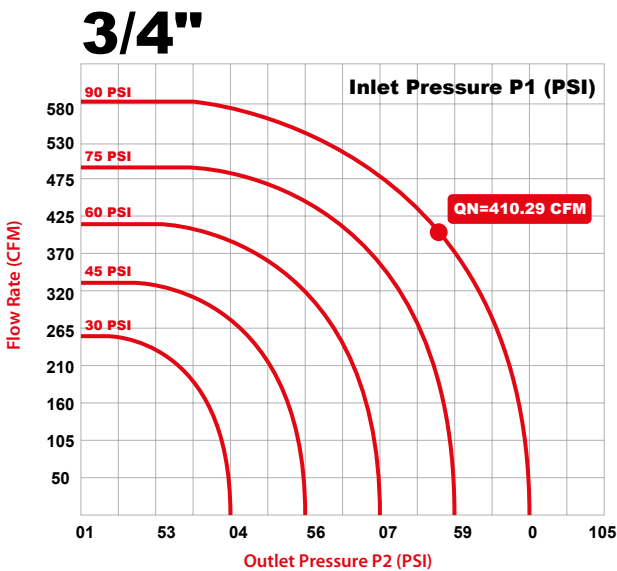
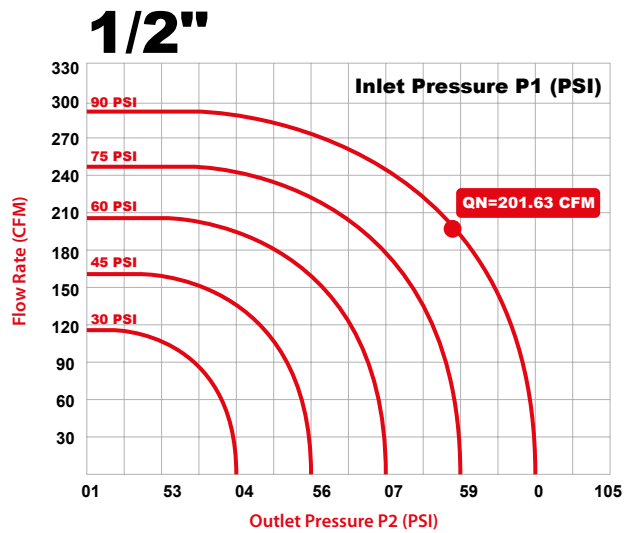
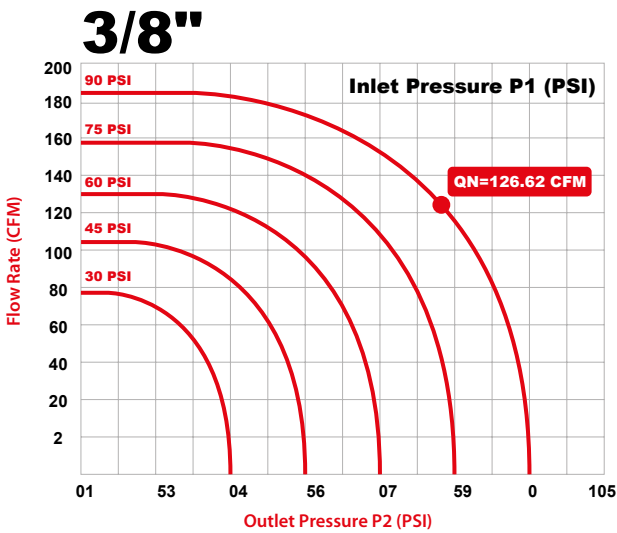
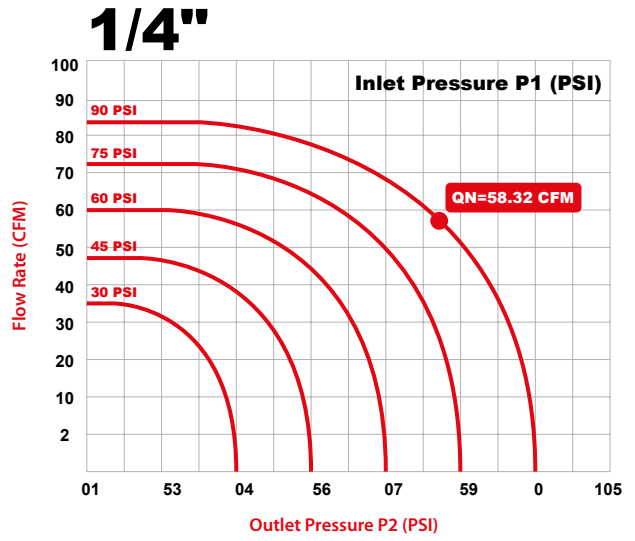
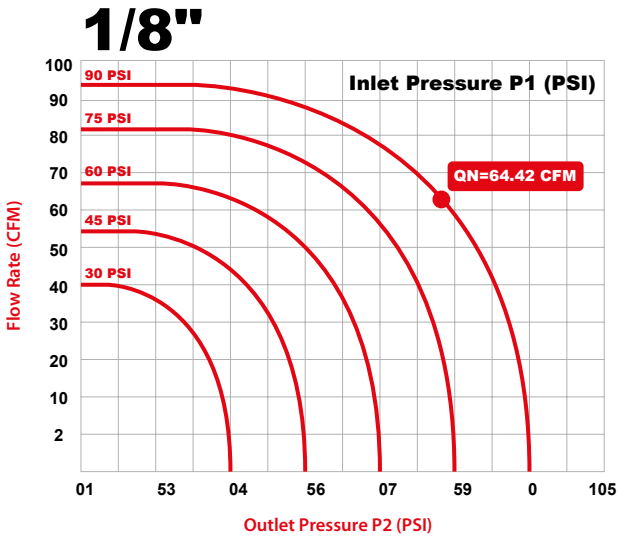
PTFE + FKM



PTFE + NBR



BALL VALVES SPECIFICATIONS





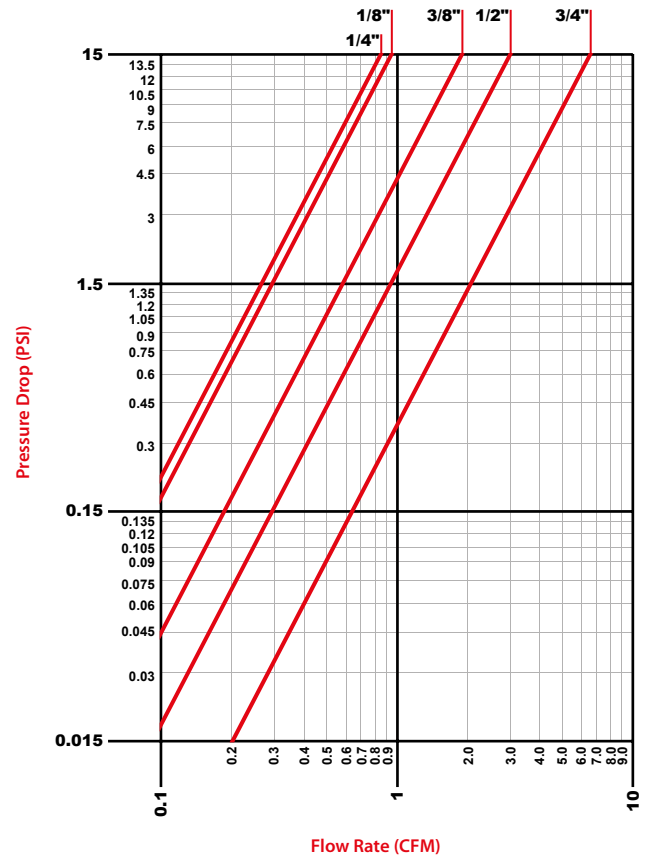
BALL VALVES SPECIFICATIONS



Flow Rate & Pressure Drop

In the table below, we specify the flow rate factors of our ball valves. These factors represent the amount of air and water that flows through the valve. They are measured by Cubic Feet per Minute at 60° F.

Thread Size	Factors of flow rate	
	CFM	m ³ /h
1/8"	0.95	1.6
1/4"	0.86	1.4
3/8"	1.86	3.1
1/2"	2.97	5
3/4"	6.05	10.2



Option

PART NUMBER	SIZE	COLOR	TYPE OF THE SEAL	TYPE OF HANDLE
-------------	------	-------	------------------	----------------

86300

3/8-3/8

BLUE PLATE

NBR



NBR



Standard Short Handle for Valve 1/8-1/4-3/8-1/2
Standard Long Handle for Valve 3/4

If required



Red Plate

**FKM
HNBR
EPDM**



LONG Handle



RO

Green Plate



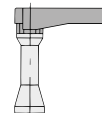
VE

White Plate



BN

Yellow Plate



Long Handle with Spindle Extension



GI

GAS:



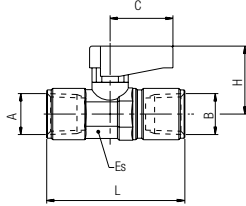
Yellow Plate EN 331

GI

86300

FEMALE X FEMALE

NPTF

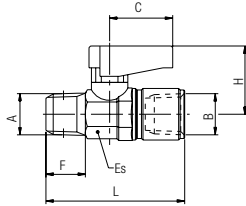


Part No.	A NPTF	B NPTF	DN	ES	L	C	H
86300-02-02	1/8	1/8	.217 (5,5)	.551 (14) - .591 (15)	1.476 (37,5)	.748 (19)	.827 (21)
86300-04-04	1/4	1/4	.217 (5,5)	.551 (14) - .591 (15)	1.811 (46)	.748 (19)	.827 (21)
86300-06-06	3/8	3/8	.315 (8)	.709 (18) - .748 (19)	1.909 (48,5)	.748 (19)	.866 (22)
86300-08-08	1/2	1/2	.394 (10)	.866 (22) - .906 (23)	2.441 (62)	1.024 (26)	1.201 (30,5)

86310

MALE X FEMALE

NPTF

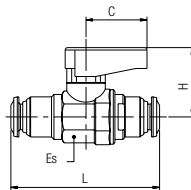


Part No.	A NPTF	B NPTF	DN	ES	F	L	C	H
86310-02-02	1/8	1/8	.217 (5,5)	.551 (14) - .591 (15)	.335 (8,5)	1.476 (37,5)	.748 (19)	.827 (21)
86310-04-04	1/4	1/4	.217 (5,5)	.551 (14) - .591 (15)	.512 (13)	1.811 (46)	.748 (19)	.827 (21)
86310-06-06	3/8	3/8	.315 (8)	.709 (18) - .748 (19)	.512 (13)	1.909 (48,5)	.748 (19)	.866 (22)
86310-08-08	1/2	1/2	.394 (10)	.866 (22) - .906 (23)	.669 (17)	2.441 (62)	1.024 (26)	1.201 (30,5)
86310-12-12	3/4	3/4	.551 (14)	1.102 (28) - 1.181 (30)	.689 (17,5)	2.500 (63,5)	1.953 (49,5)	1.319 (33,5)

86320

INCH TUBE X INCH TUBE

Inch tube

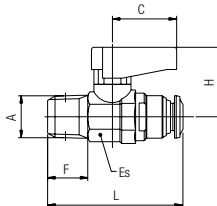


Part No.	Tube	Tube	ES	L	C	H
86320-02-02	1/8	1/8	.551 (14) - .591 (15)	1.673 (42,5)	.748 (19)	.828 (21)
86320-04-04	1/4	1/4	.551 (14) - .591 (15)	1.831 (46,5)	.748 (19)	.828 (21)
86320-06-06	3/8	3/8	.709 (18) - .748 (19)	2.382 (60,5)	.748 (19)	.866 (22)

86330

INCH TUBE X MALE

Inch tube

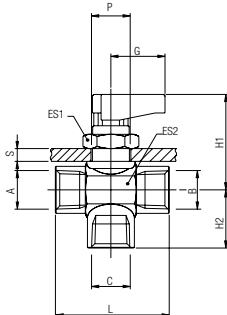


Part No.	Tube	A NPTF	F NPTF	ES	L	C	H
86330-53-02	5/32 (4)	1/8	.332 (8,5)	.551 (14) - .591 (15)	1.365 (35)	.741 (19)	.819 (21)
86330-04-02	1/4	1/8	.332 (8,5)	.551 (14) - .591 (15)	1.574 (40)	.741 (19)	.819 (21)
86330-04-04	1/4	1/4	.488 (12,5)	.551 (14) - .591 (15)	1.502 (38,5)	.741 (19)	.819 (21)
86330-06-06	3/8	3/8	.507 (13)	.709 (18) - .748 (19)	1.755 (45)	.741 (19)	.858 (22)

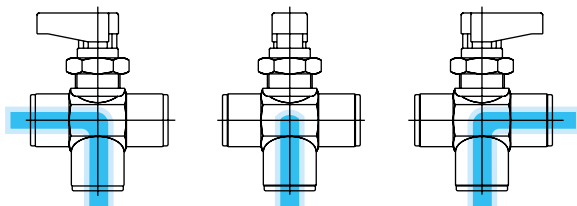
86700

THREE POSITION (CLOSED CENTER)

NPTF



NO GAS

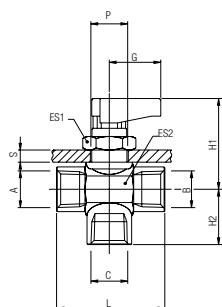


Part No.	A/B/C	DN	ES1	ES2	L	G	H1	H2	S max
86700-02	1/8	.217 (5,5)	.669 (17)	.669 (17)	1.476 (37,5)	.748 (19)	1.319 (33,5)	.650 (16,5)	.177 (4,5)
86700-04	1/4	.217 (5,5)	.669 (17)	.669 (17)	1.476 (37,5)	.748 (19)	1.319 (33,5)	.650 (16,5)	.177 (4,5)
86700-06	3/8	.276 (7)	.669 (17)	.827 (21)	1.909 (48,5)	.748 (19)	1.378 (35)	.866 (22)	.177 (4,5)

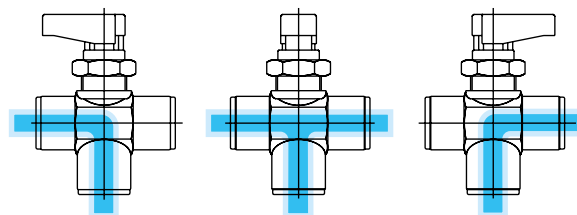
86710

THREE POSITION (OPEN CENTER)

NPTF



NO GAS

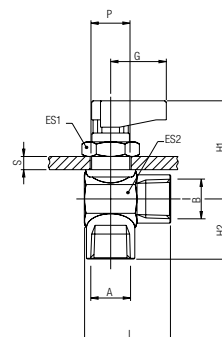


Part No.	A/B/C	DN	ES1	ES2	L	G	H1	H2	S max
86710-02	1/8	.217 (5,5)	.669 (17)	.669 (17)	1.476 (37,5)	.748 (19)	1.319 (33,5)	.650 (16,5)	.177 (4,5)
86710-04	1/4	.217 (5,5)	.669 (17)	.669 (17)	1.476 (37,5)	.748 (19)	1.319 (33,5)	.650 (16,5)	.177 (4,5)
86710-06	3/8	.276 (7)	.827 (21)	.827 (21)	1.909 (48,5)	.748 (19)	1.378 (35)	.866 (22)	.177 (4,5)

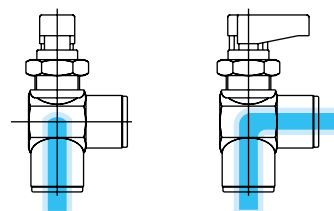
86720

RIGHT ANGLE

NPTF



NO GAS

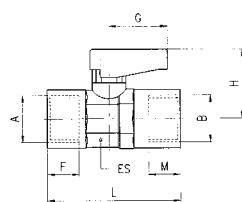


Part No.	A/B	DN	ES1	ES2	L	G	H1	H2	S max
86720-02	1/8	.217 (5,5)	.669 (17)	.669 (17)	1.476 (37,5)	.748 (19)	1.319 (33,5)	.650 (16,5)	.177 (4,5)
86720-04	1/4	.217 (5,5)	.669 (17)	.669 (17)	1.476 (37,5)	.748 (19)	1.319 (33,5)	.650 (16,5)	.177 (4,5)
86720-06	3/8	.276 (7)	.669 (17)	.827 (21)	1.535 (39)	.748 (19)	1.378 (35)	.866 (22)	.177 (4,5)

6300

FEMALE X FEMALE

BSPT

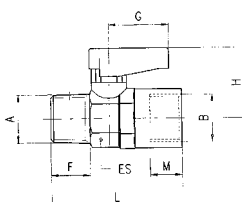


Part No.	A	B	DN	ES	F	M	L	G	H
6300-1/8	1/8	1/8	.217 (5,5)	.551(14) - .591(15)	.291 (7,4)	.291 (7,4)	1.417 (36)	.748 (19)	.827 (21)
6300-1/4	1/4	1/4	.217 (5,5)	.551(14) - .591(15)	.433 (11)	.433 (11)	1.693 (43)	.748 (19)	.827 (21)
6300-3/8	3/8	3/8	.315 (8)	.709(18) - .748(19)	.449 (11,4)	.449 (11,4)	1.850 (47)	.748 (19)	.866 (22)
6300-1/2	1/2	1/2	.394 (10)	.866(22) - .906(23)	.591 (15)	.591 (15)	2.323 (59)	1.024 (26)	1.201 (30,5)
6300-3/4	3/4	3/4	.551 (14)	1.102(28) - 1.181(30)	.642 (16,3)	.642 (16,3)	2.638 (67)	1.969 (50)	1.299 (33)

6310

MALE X FEMALE

BSPT

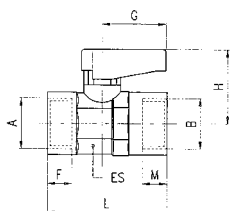


Part No.	A	B	DN	ES	F	M	L	G	H
6310-1/8-1/8	1/8	1/8	.217 (5,5)	.551(14) - .591(15)	.291 (7,4)	.291 (7,4)	1.417 (36)	.748 (19)	.827 (21)
6310-1/4-1/8	1/4	1/8	.217 (5,5)	.551(14) - .591(15)	.433 (11)	.291 (7,4)	1.594 (40,5)	.748 (19)	.827 (21)
6310-1/4-1/4	1/4	1/4	.217 (5,5)	.551(14) - .591(15)	.433 (11)	.433 (11)	1.693 (43)	.748 (19)	.827 (21)
6310-3/8-3/8	3/8	3/8	.315 (8)	.709(18) - .748(19)	.449 (11,4)	.449 (11,4)	1.811 (46)	.748 (19)	.866 (22)
6310-1/2-1/2	1/2	1/2	.394 (10)	.866(22) - .906(23)	.591 (15)	.591 (15)	2.244 (57)	1.024 (26)	1.201 (30,5)
6310-3/4-3/4	3/4	3/4	.551 (14)	1.102(28) - 1.181(30)	.642 (16,3)	.642 (16,3)	2.480 (63)	1.969 (50)	1.299 (33)

6400

FEMALE X FEMALE

BSPP

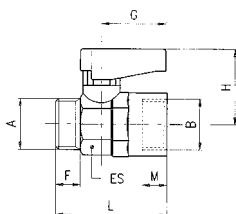


Part No.	A	B	DN	ES	F	M	L	G	H
6400-1/8-1/8	1/8	1/8	.217 (5,5)	.551(14) - .591(15)	.276 (7)	.276 (7)	1.378 (35)	.748 (19)	.827 (21)
6400-1/4-1/4	1/4	1/4	.217 (5,5)	.551(14) - .591(15)	.315 (8)	.315 (8)	1.457 (37)	.748 (19)	.827 (21)
6400-3/8-3/8	3/8	3/8	.315 (8)	.709(18) - .748(19)	.354 (9)	.354 (9)	1.654 (42)	.748 (19)	.866 (22)
6400-1/2-1/2	1/2	1/2	.394 (10)	.866(22) - .906(23)	.394 (10)	.394 (10)	1.929 (49)	1.024 (26)	1.201 (30,5)
6400-3/4-3/4	3/4	3/4	.551 (14)	1.102(28) - 1.181(30)	.472 (12)	.472 (12)	2.283 (58)	1.969 (50)	1.299 (33)

6410

MALE X FEMALE

BSPP

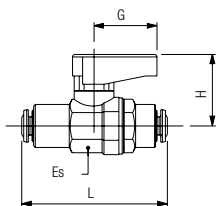


Part No.	A	B	DN	ES	F	M	L	G	H
6410-1/8-1/8	1/8	1/8	.217 (5,5)	.551(14) - .591(15)	.276 (7)	.276 (7)	1.339 (34)	.748 (19)	.827 (21)
6410-1/4-1/8	1/4	1/8	.217 (5,5)	.551(14) - .591(15)	.315 (8)	.276 (7)	1.378 (35)	.748 (19)	.827 (21)
6410-1/4-1/4	1/4	1/4	.217 (5,5)	.551(14) - .591(15)	.315 (8)	.315 (8)	1.378 (35)	.748 (19)	.827 (21)
6410-3/8-3/8	3/8	3/8	.315 (8)	.709(18) - .748(19)	.354 (9)	.354 (9)	1.535 (39)	.748 (19)	.866 (22)
6410-1/2-1/2	1/2	1/2	.394 (10)	.866(22) - .906(23)	.394 (10)	.394 (10)	1.772 (45)	1.024 (26)	1.201 (30,5)
6410-3/4-3/4	3/4	3/4	.551 (14)	1.102(28) - 1.181(30)	.472 (12)	.472 (12)	2.047 (52)	1.969 (50)	1.299 (33)

6560

TUBE X TUBE

Metric tube



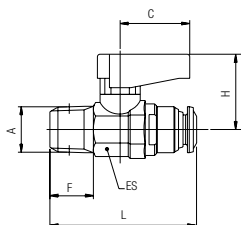
Part No.	Tube	Tube	DN	ES	L	G	H
6560-4-4	5/32 (4)	5/32 (4)	.118 (3)	.551(14) - .591(15)	1.732 (44)	.748 (19)	.827 (21)
6560-6-6	6	6	.197 (5)	.551(14) - .591(15)	1.890 (48)	.748 (19)	.827 (21)
6560-8-8	5/16 (8)	5/16 (8)	.217 (5,5)	.551(14) - .591(15)	1.890 (48)	.748 (19)	.827 (21)
6560-10-10	10	10	.315 (8)	.709(18) - .748(19)	2.303 (58,5)	.748 (19)	.866 (22)
6560-12-12	12	12	.394 (10)	.866(22) - .906(23)	2.598 (66)	1.024 (26)	1.201 (30,5)

NO GAS

6570

TUBE X MALE

Metric tube - BSPT



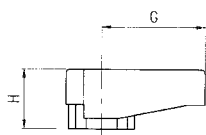
Part No.	A	Tube	DN	F	ES	L	C	H
6570-4-1/8	1/8	5/32 (4)	.118 (3)	.335 (8,5)	.551(14) - .591(15)	1.378 (35)	.748 (19)	.827 (21)
6570-6-1/8	1/8	6	.197 (5)	.335 (8,5)	.551(14) - .591(15)	1.575 (40)	.748 (19)	.827 (21)
6570-8-1/8	1/8	5/16 (8)	.217 (5,5)	.335 (8,5)	.551(14) - .591(15)	1.634 (41,5)	.748 (19)	.827 (21)
6570-6-1/4	1/4	6	.315 (8)	.492 (12,5)	.551(14) - .591(15)	1.516 (38,5)	.748 (19)	.827 (21)
6570-8-1/4	1/4	8	.394 (10)	.492 (12,5)	.551(14) - .591(15)	1.791 (45,5)	.748 (19)	.866 (22)

NO GAS

BALL VALVE ACCESSORIES

86900

SHORT HANDLE

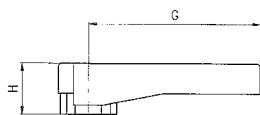


Part No.	C	H	Size Valve
* 86900-02	.748 (19)	.433 (11)	1/8 - 1/4 - 3/8
86900-08	1.024 (26)	.590 (15)	1/2 - 3/4

* Standard

86910

LONG HANDLE

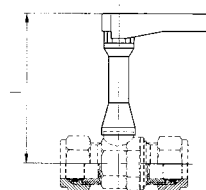


Part No.	C	H	Size Valve
86910-02	1.378 (35)	.433 (11)	1/8 - 1/4 - 3/8
* 86910-08	1.968 (50)	.590 (15)	1/2 - 3/4

* Standard

86915

STEM EXTENSION KIT



Part No.	Size	L
86915-02	1/8	2.283 (58)
	1/4	2.283 (58)
	3/8	2.323 (59)
86915-08	1/2	2.677 (68)
	3/4	2.756 (70)

86920

COLOR PLATE



Part No.	Color	Size
86920-01	Blue (Standard Color)	1/8 - 1/4 - 3/8
86920-02	Red	1/8 - 1/4 - 3/8
86920-03	Green	1/8 - 1/4 - 3/8
86920-04	Yellow	1/8 - 1/4 - 3/8
86920-05	White	1/8 - 1/4 - 3/8
86921-01	Blue (Standard Color)	1/2 - 3/4
86921-02	Red	1/2 - 3/4
86921-03	Green	1/2 - 3/4
86921-04	Yellow	1/2 - 3/4
86921-05	White	1/2 - 3/4

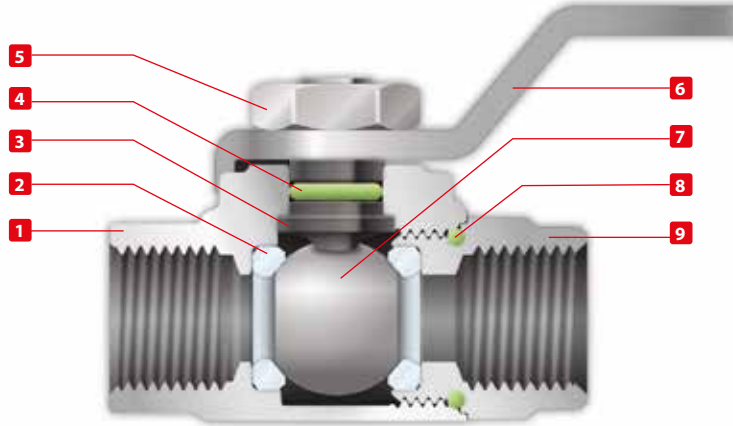
GHINOX SERIES: BALLVALVE IN STAINLESS STEEL AISI 316 L



TECHNICAL CHARACTERISTICS



Reference Standard



Pressure Rating

Vacuum ~ 580 PSI
-0.99 bar ~ 40 bar
-0.099 MPa ~ 4 MPa



Temperatures

Minimum temperature	5 °F - 15 °C
Maximum temperature in continuous	302 °F + 150 °C
Maximum temperature for short term	356 °F + 180 °C



Media

- Compressed air
- Vacuum
- Water
- Oils



Component Parts and Materials

- 1 Stainless steel AISI 316L Body
- 2 PTFE Seats
- 3 Stainless steel AISI316L Spindle
- 4 FKM Seal O-RING
- 5 Stainless steel AISI316L Hex Nut
- 6 Stainless steel AISI316L Spindle
- 7 Stainless steel AISI316L Ball
- 8 FKM Seal O-RING
- 9 Stainless steel AISI316L Fitting



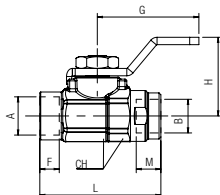
Threads

Gas in conformity with ISO7.1, BS 21, DIN 2999.

66300

FEMALE x FEMALE

BSPP

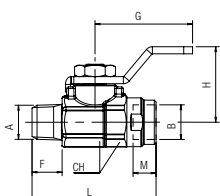


Part No.	A	B	DN	CH	F	M	L	G	H
66300-02-02	1/8	1/8	0.217 (5,5)	0.551-0.591 (14-15)	0.335 (8,5)	0.335 (8,5)	1.300 (33)	1.102 (28)	0.846 (21,5)
66300-04-04	1/4	1/4	0.217 (5,5)	0.630-0.669 (16-17)	0.492 (12,5)	0.492 (12,5)	1.693 (43)	1.102 (28)	0.846 (21,5)

66310

MALE x FEMALE

BSPT

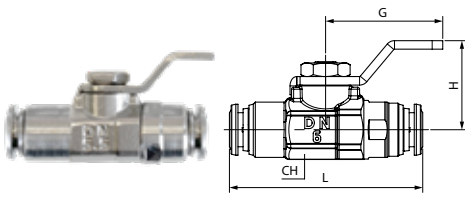


Part No.	A	B BSPT	DN	CH	F	M	L	G	H
66310-02-02	1/8	1/8	0.217 (5,5)	0.551-0.591 (14-15)	0.335 (8,5)	0.335 (8,5)	1.378 (35)	1.102 (28)	0.846 (21,5)
66310-04-04	1/4	1/4	0.217 (5,5)	0.630-0.669 (16-17)	0.492 (12,5)	0.492 (12,5)	1.752 (44,5)	1.102 (28)	0.846 (21,5)

66560

TUBE X TUBE

Metric tube

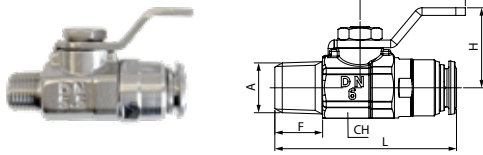


Code	Tube	Tube	DN	CH	L	G	H
66560-6-8	6	6	0.197 (5)	0.551-0.591 (14-15)	1.772 (45)	1.102 (28)	0.846 (21,5)
66560-8-8	8	8	0.217 (5,5)	0.630-0.669 (16-17)	2.0048 (52)	1.102 (28)	0.846 (21,5)

66570

TUBE X MALE

BSPT



Code	Tube	A	DN	F	CH	L	G	H
66570-6-1/8	6	1/8	0.197 (5)	0.335 (8,5)	0.551-0.591 (14-15)	1.613 (41)	1.102 (28)	0.846 (21,5)
66570-6-1/4	6	1/4	0.197 (5)	0.492 (12,5)	0.630-0.669 (16-17)	1.772 (45)	1.102 (28)	0.846 (21,5)
66570-8-1/8	8	1/8	0.217 (5,5)	0.335 (8,5)	0.551-0.591 (14-15)	1.693 (43)	1.102 (28)	0.846 (21,5)
66570-8-1/4	8	1/4	0.217 (5,5)	0.492 (12,5)	0.630-0.669 (16-17)	1.890 (48)	1.102 (28)	0.846 (21,5)

