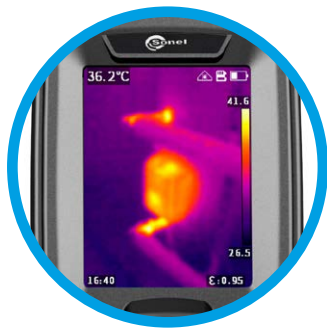




Thermal Imager KT-256 / 128

index: WMGBKT256 / WMGBKT128



2.4" display

Clear temperature reading



Large buttons

Conveniently located for flawless control



Trigger

Temperature measurement with a single press

Feel safe with thermography

Simple thermography

KT-128 / 256 is a special camera. Economical, practical and handy, it is a powerful tool in everyday work.

The camera is used for basic diagnostics. It is equipped with a matrix having a resolution of:

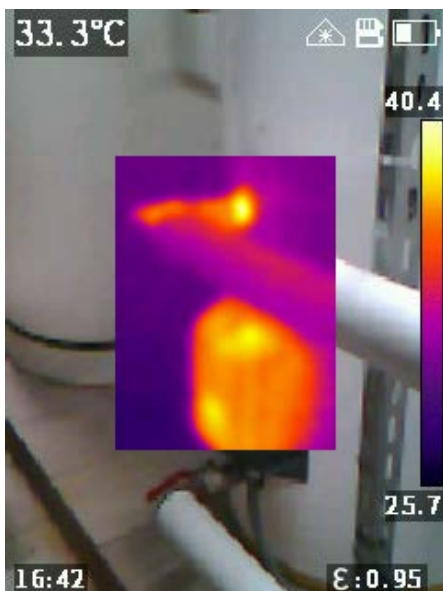
- » **KT-128** | 120 x 90 pixels,
- » **KT-256** | 256 x 192 pixels,

supported by visual camera, laser pointer and additional features to fully meet the needs of users.

Application

KT-128 / 256 is used always when the temperature of objects is important and may affect the operation of the equipment. Particularly useful in:

- power engineering,
- construction sector,
- industry
- HVAC.



Features

- measuring range:
 - » **KT-128** | -20°C...400°C (-20°F... 752°F)
 - » **KT-256** | -20°C...550°C (-20°F... 1022°F)
- quick start
- fast temperature measurement
- automatic signalling of exceeded alarm threshold
- saving IR images to SD card
- built-in Li-Ion battery with 5-hour working time
- interfaces: USB type C, SD slot
- can be set up on a tripod

Specifications

	KT-128	KT-256
Detector resolution	120 x 90 / 17 µm	256 x 192 / 12 µm
Detector	7.5~14 µm	
Frame rate	25 Hz	
Sensitivity	60 mK	45 mK
Lens (field of vision / focal distance)	50° x 38°/2.28 mm	56° x 48°/3.2 mm
Spatial resolution (IFOV)	7.6 mrad	3.75 mrad
Display	2.4", 240 x 320, LCD	
Image mode	IR / Visual / PiP	IR / Visual / Infrarufusion MIF / PiP
Temperature range	Range 1: -20°C...+150°C -20°F...+302°F Range 2: 100°C...+400°C 212°F...752°F	Range 1: -20°C...+150°C -20°F...+302°F Range 2: 100°C...+550°C 212°F...1022°F
Accuracy	±2°C ±4°F or ±2% of reading (for ambient temperature 15°C...30°C, object temp. ≥0°C)	
Image analysis mode	Point. 3 areas. Temperature indication: min, max. Temp. alarm	
Palettes	6	
Emissivity	Selectable from 0.01 to 1.00 or from the list	
Measurement adjustment	Adjustable distance, ambient temperature (reflected)	
Image file format	JPG	
Built-in features	Visual camera 5 MPix, LED flashlight, laser pointer	
Interfaces	microSD card slot (max. 32 GB), USB type C, tripod	
Power supply	Li-Ion battery (operating time >5 hours), built-in charger (charging time <2.5 hour), AC adapter 110-230 V, 50/60 Hz	Li-Ion battery (operating time >16 hours), built-in charger (charging time <2.5 hour), AC adapter 110-230 V, 50/60 Hz
Operating temperature	-10°C...+50°C 14°F...122°F	
Storage temperature	-40°C...+70°C -40°F...+158°F	
Housing	IP54	
Weight	ca. 0.35 kg 0.77 lbs	ca. 0.38 kg 0.84 lbs

Standard accessories

USB charger	WAZASZ20
Type C USB cable	WAPRZUSBC
16 GB microSD card	WAPOZMSD16
Wristband	WAPOZPAS1
Declaration of verification	

Optional accessories

Calibration certificate with accreditation