

Watec USB Camera

User's Manual

Rev. 3.10

Watec Co., Ltd.

December 1, 2021

Revision Record

Rev.	Date	Changes	Remarks
1.00	August 28, 2013	—	Initial Release
2.00	—	—	
3.00	August 29, 2016	<ul style="list-style-type: none"> • Correction to “Watec USB Camera” of The title • Add WAT-02U2D and WAT-03U2 • Add 5. Operation on Mac OS 	
3.01	April 17, 2017	<ul style="list-style-type: none"> • Add WAT-03U2D 	
3.02	September 5, 2018	<ul style="list-style-type: none"> • Add WAT-05U2M 	
3.03	April 1, 2020	<ul style="list-style-type: none"> • Add Zoom function 	
3.10	December 1, 2021	<ul style="list-style-type: none"> • Add WAT-06U2, WAT-07U2, WAT-06U2D and WAT-07U2D 	

Table of Contents

Table of Contents	3
1. About this User's Manual	4
2. Connecting the Watec USB Camera with a PC	5
3. Functions and Settings	6
3.1. Preview	7
3.2. Video Capture Pin	8
3.2.1. Color Space/Compression (Compression Mode)	9
3.2.2. Output Size (Image Size)	9
3.2.3. Frame Rate	10
3.3. Video Capture Filter Image Adjustment (Video Proc Amp)	13
3.3.1. Brightness	14
3.3.2. Contrast	14
3.3.3. Hue	15
3.3.4. Saturation	16
3.3.5. Sharpness	17
3.3.6. Gamma	18
3.3.7. White Balance	19
3.3.8. Backlight Compensation	20
3.3.9. Gain	21
3.3.10. PowerLine Frequency(Anti Flicker)	22
3.4. Video Capture Filter Camera Control	23
3.4.1. Zoom	24
3.4.2. Exposure (Shutter)	25
3.4.3. Low Light Compensation (SlowShutter)	27
3.5. Camera Control	27
3.5.1. Sensor Sense	27
4. GPIO Connection	28
4.1. Snapshot Function	28
4.1.1. Method to Confirm Operation (saving of static image)	28
4.1.2. Image File Setting	29
4.1.2.1. Color Space/Compression (CompressionMode)	30
4.1.2.2. Output Size (ImageSize)	30
5. Remarks: Operation on Mac OS X	31
6. Remarks: Operation on Android OS	31

1. About this User's Manual

This User's Manual consists of instructions to connect the WAT-01U2 / WAT-02U2D / WAT-03U2 / WAT-03U2D / WAT-05U2M / WAT-06U2 / WAT-07U2 / WAT-06U2D / WAT-07U2D (the following is the Watec USB Camera) to a PC and describes and explains the settings for the Video Capture Pin/Video Capture Filter and describes the Snapshot feature which utilizes the GPIO connection of the WAT-01U2 / WAT-03U2 / WAT-06U2 / WAT-07U2.

When the settings of the Watec USB Camera is changed according to the Watec USB Camera user's manual, check to see that the operation and the effects of the changes made to the camera are acceptable.

The Watec USB Camera user's manual is subject to change by design and the specifications of the product without notice.

The copyright of the Watec USB Camera user's manual shall belong to Watec Co., Ltd. Copying in whole or in part without the authorization of the holders permission is prohibited.

2. Connecting the Watec USB Camera with a PC

The diagram below shows the connections between the Watec USB Camera and a PC. Please use a conversion connector separately according to the USB port of the PC to which the camera is connected.

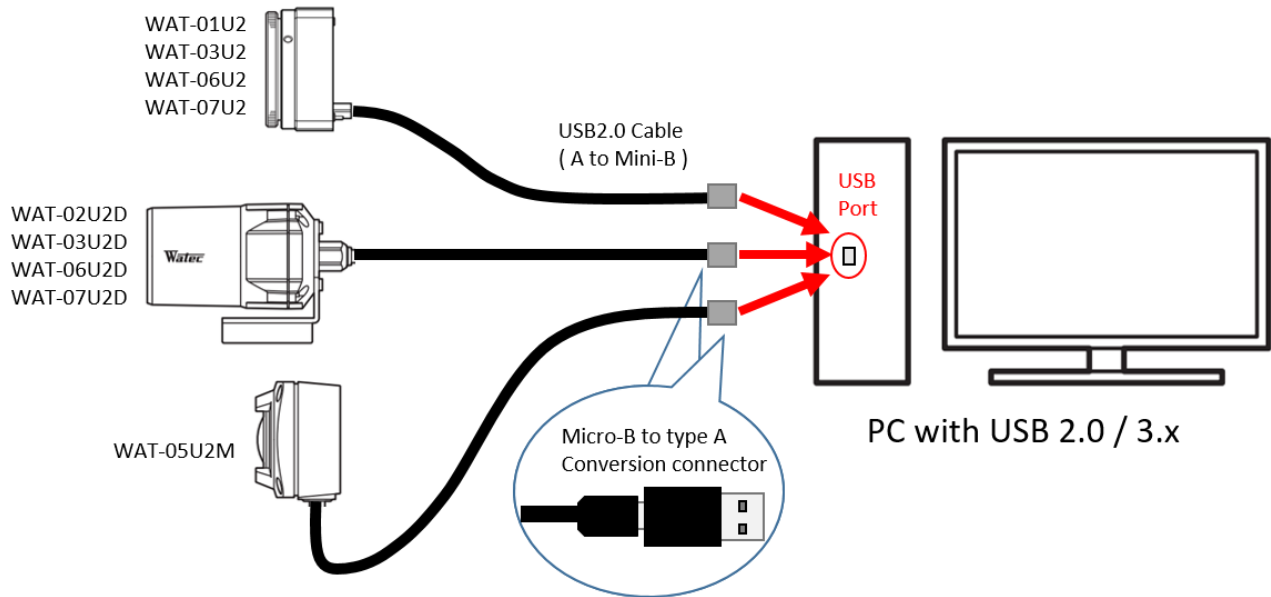


Fig.1 Watec USB Camera – PC Connection Example

It is recommended to use a PC with a USB 2.0 port and a Windows 10 32 / 64bit or later OS installed.

The Watec USB Camera is compatible with USB Video Class.

When the Watec USB Camera is connected to a PC for the first time, the driver will be installed automatically. If the driver installation does not occur, and the Watec USB Camera is not recognized by the PC, please check to make sure that the connection is correct, and please check that the PC requirements are met.

It is possible to acquire videos on a PC with an OS of XP or earlier, but some functions are limited. Please refer to Section 3 “Functions and Settings” for details.

Please connect the camera to the PC, and after confirming that the camera is recognized, please start the viewer software and begin the Preview/Capture of video.

3. Functions and Settings

The Watec USB Camera settings are separated into Video Capture Pin, which is used to set the output image size, and the Video Capture Filter, which is used to set the image brightness and color.

This section explains each of the functions of the Watec USB Camera and their respective setting methods using the WatecCameraViewer (Watec USB Camera Capture Software which can be downloaded from our company's website, <http://www.watec.co.jp/>) as an example.

(For details on how to install the software, please refer to the readme.txt file included with the WatecCameraViewer software.)

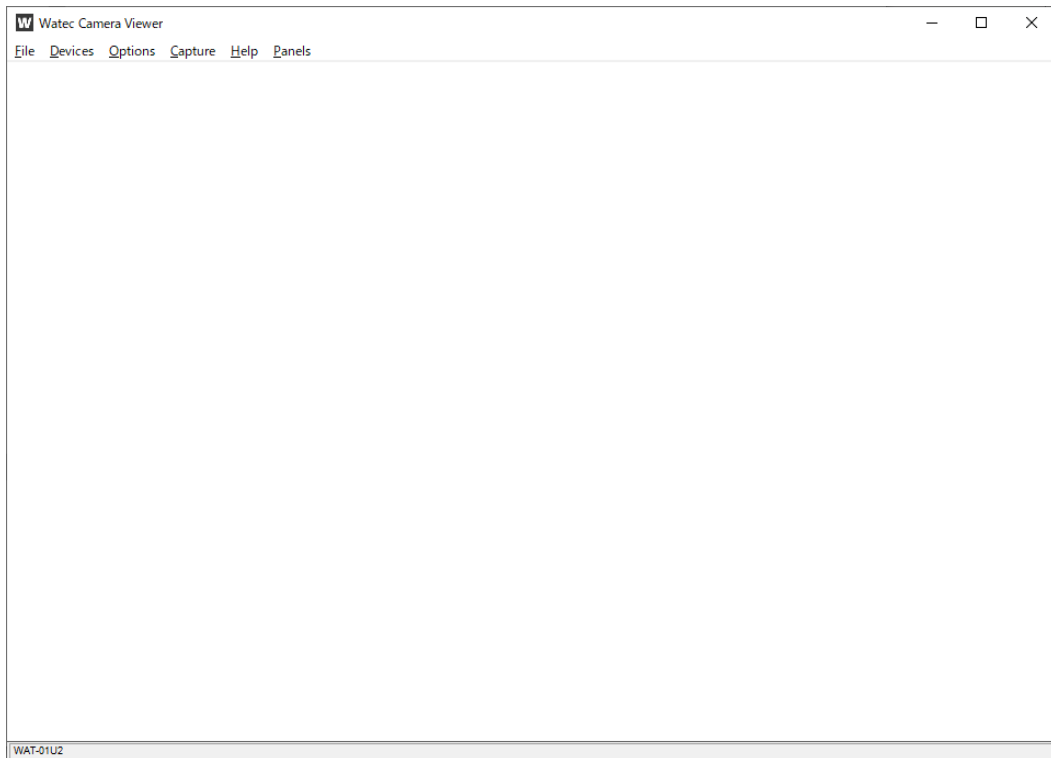


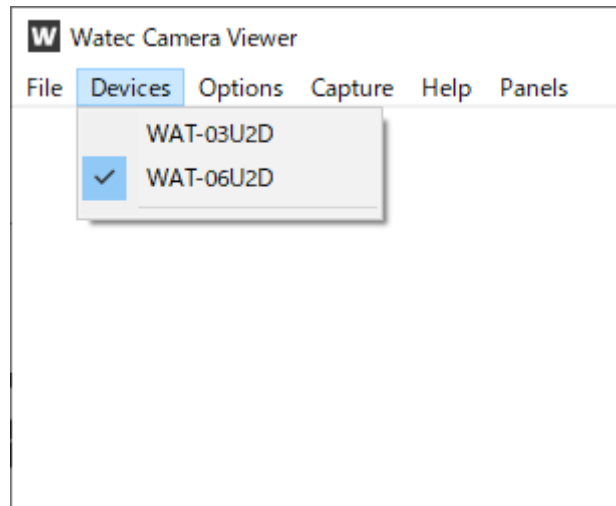
Fig.2 WatecCameraViewer Window

3.1.Preview

Please operate the menu at the top of the window to output an image on the window.

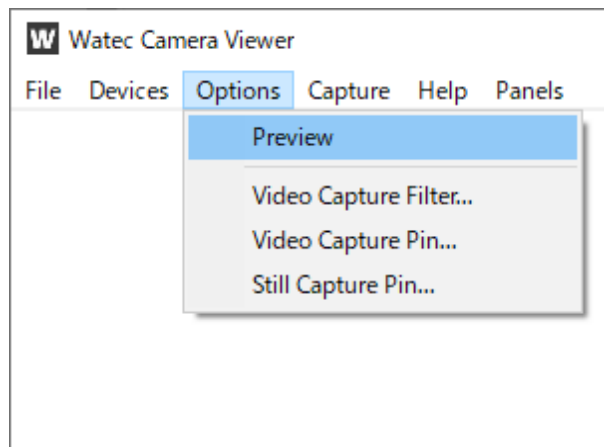
1. Selection of the device

The list of connected devices is shown when the “Devices” is clicked.
Please select the camera that outputs the image.



2. Start of preview

Please click the “Options -> Preview”.



Then the preview begins.

3.2.Video Capture Pin

The Color Space and Video Format can be set in the Video Capture Pin. The setting can be accessed from the menu at the top of the window (Options -> Video Capture Pin).

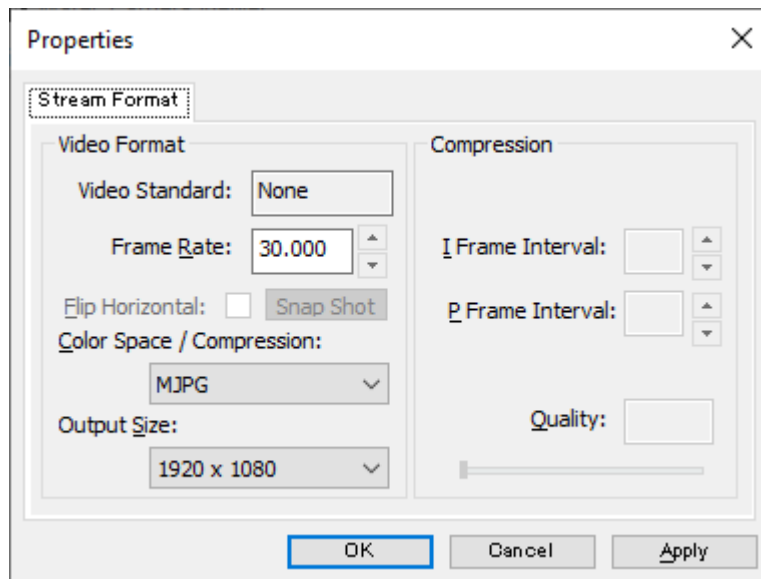


Fig.3 Video Capture Pin Window

The same setting is accessible from the Panels -> Camera Control menu at the top of the window.

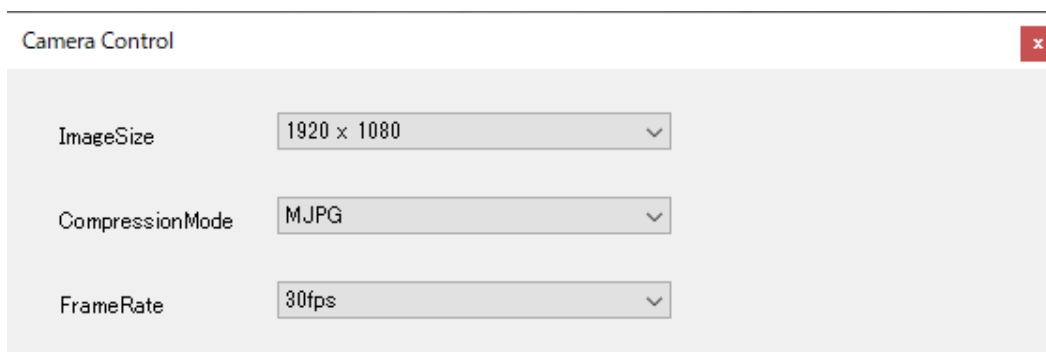


Fig.4 Camera Control Window

3.2.1. Color Space/Compression (Compression Mode)

Can be selected from YUY2 and MJPG.

YUY2: Uncompressed video output using YUY2(YUV422) format as Color Space.

The resolution is higher than MJPG, however, the frame rate is limited as described in the later section.

MJPG: Output video is compressed with MJPG(Motion-JPEG) format. The resolution will decrease, however, the frame rate will be maintained even at the maximum image size.

3.2.2. Output Size (Image Size)

The video image output size of the WAT-01U2 / WAT-02U2D is selected from the following 8 selections.

Image size (H x V)	Aspect Ratio	No. of Pixels	Resolution *
1920 x 1080	16:9	2,073,600	FHD, 1080p
160 x 120	4:3	19,200	Quarter-Quarter-VGA
176 x 144	11:9	25,344	Quarter-CIF
320 x 240	4:3	76,800	Quarter-VGA
640 x 480	4:3	307,200	VGA
1280 x 1024	5:4	1,310,720	SXGA
1280 x 720	16:9	921,600	HD, 720p
1280 x 800	16:10	1,024,000	WXGA

The video image output size of the WAT-03U2 / WAT-03U2D is selected from the following 4 selections.

Image size (H x V)	Aspect Ratio	No. of Pixels	Resolution *
1280 x 960	4:3	1,228,800	Quad-VGA
320 x 240	4:3	76,800	Quarter-VGA
640 x 480	4:3	307,200	VGA
1280 x 720	16:9	921,600	HD 720p

The video image output size of the WAT-05U2M / WAT-06U2 / WAT-6U2D / WAT-7U2 / WAT-07U2D is selected from the following 4 selections.

Image size (H x V)	Aspect Ratio	No. of Pixels	Resolution *
1920 x 1080	16:9	2,073,600	FHD 1080p
320 x 240	4:3	76,800	Quarter-VGA
640 x 480	4:3	307,200	VGA
1280 x 720	16:9	921,600	HD 720p

*Resolution :

VGA : Video Graphics Array

SXGA : Super-XGA

WXGA : Wide-XGA

3.2.3.Frame Rate

The frame rate will be fixed by the Color Space/Compression mode and image size settings.

The frame rate of WAT-01U2 / WAT-02U2D is as follows.

Color Space/ Compression	Image Size	Frame Rate (fps) *
YUY2	1920 x 1080	5
	160 x 120	30
	176 x 144	30
	320 x 240	30
	640 x 480	30
	1280 x 1024	7.5
	1280 x 720	10
	1280 x 800	10
MJPEG	1920 x 1080	30
	160 x 120	30
	176 x 144	30
	320 x 240	30
	640 x 480	30
	1280 x 1024	30
	1280 x 720	30
	1280 x 800	30

The frame rate of WAT-03U2 / WAT-03U2D is as follows.

Color Space/ Compression	Image Size	Frame Rate (fps) *
YUY2	1280 x 960	7.5
	320 x 240	30
	640 x 480	30
	1280 x 720	7.5
MJPEG	1280 x 960	30
	320 x 240	60
		30
	640 x 480	60
		30
1280 x 720	30	

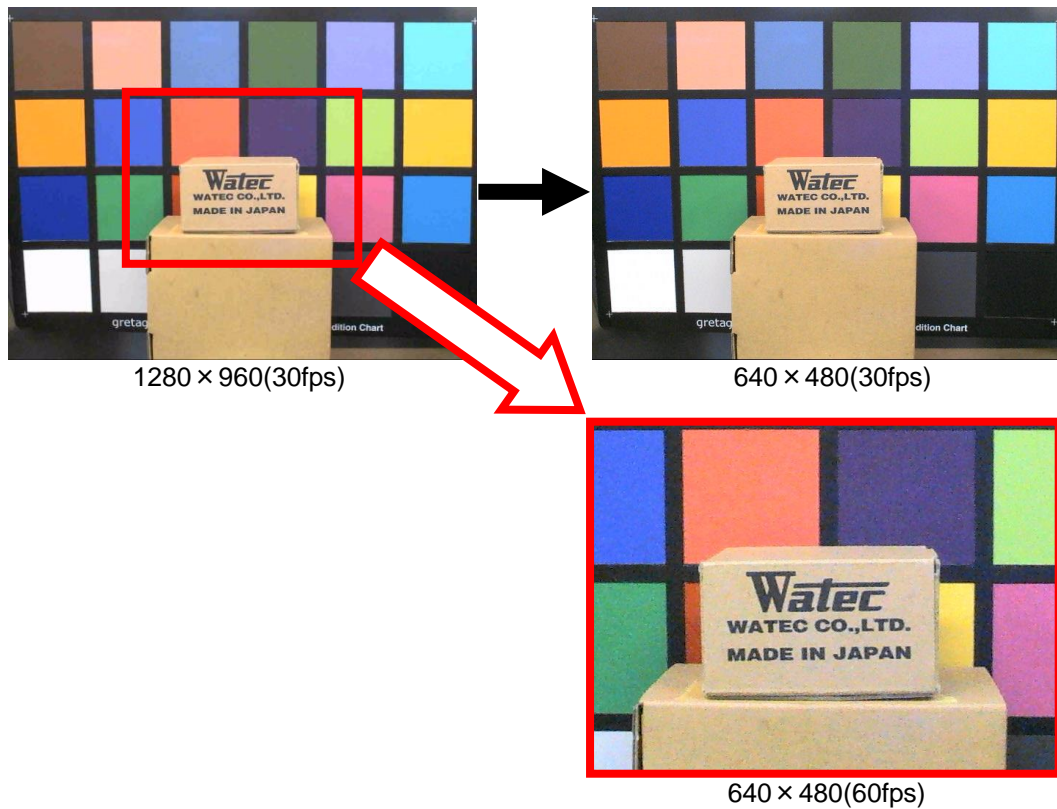
The frame rate of WAT-05U2M / WAT-06U2 / WAT-07U2 / WAT-06U2D / WAT-07U2D is as follows.

Color Space/ Compression	Image Size	Frame Rate (fps) *
YUY2	1920 x 1080	5
	320 x 240	30
		15
	640 x 480	30
15		
	1280 x 720	7.5
MJPEG	1920 x 1080	30
		15
	320 x 240	30
		15
	640 x 480	30
		15
	1280 x 720	30
		15

*fps: Frames per Second, the number of frames processed per second in a video image, the higher frame rates produce smoother, more fluid video.

On the WAT-03U2 / WAT-03U2D, the frame rate is selectable from 30fps or 60fps when the MJPG is set with 320x240 or 640x480.

It cuts and outputs a read area from the image sensor when 60fps is selected. In order to cut and output the central part of the screen, the angle of view is different from other frame rates.



On the WAT-03U2 / WAT-03U2D / WAT-05U2M / WAT-06U2 / WAT-07U2 / WAT-06U2D / WAT-07U2D, please note that the “Use Frame Rate” (Capture -> Set Frame Rate...) setting differs depending on frame rate selection methods.

Choose “OFF” when selecting the frame rate from the “Video Capture Pin”. Choose “ON” when selecting the frame rate from “Camera Control”.

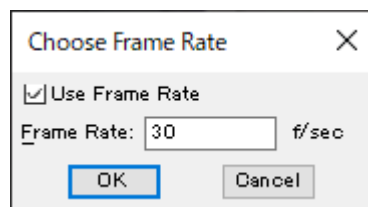


Fig.5 Set Frame Rate Window

3.3.Video Capture Filter Image Adjustment (Video Proc Amp)

The functions can be adjusted. The setting is accessed by selecting the Options -> Video Capture Filter from the menus at the top.

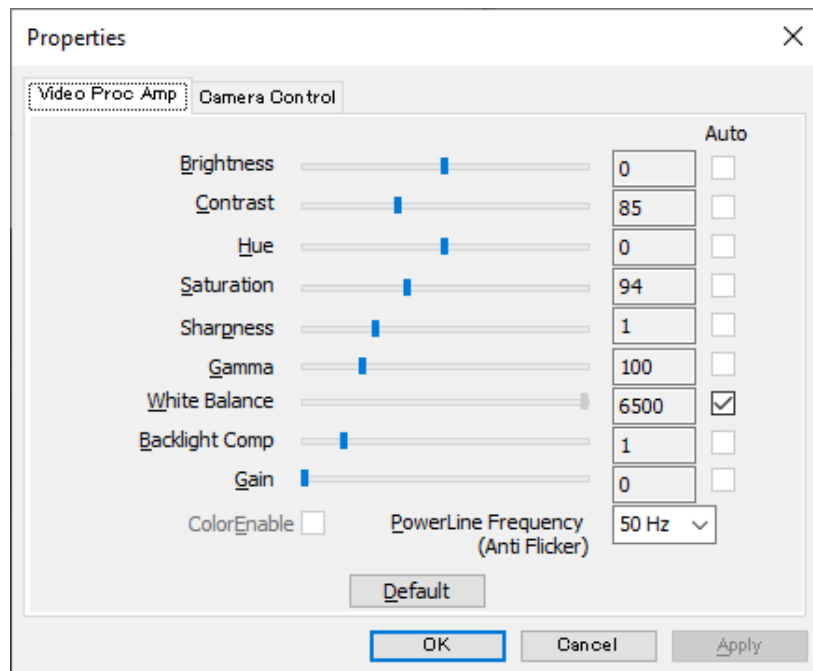


Fig.6 Video Capture Filter Video Proc Amp window

The same setting is accessible from the Panels -> Camera Control menu at the top of the window.

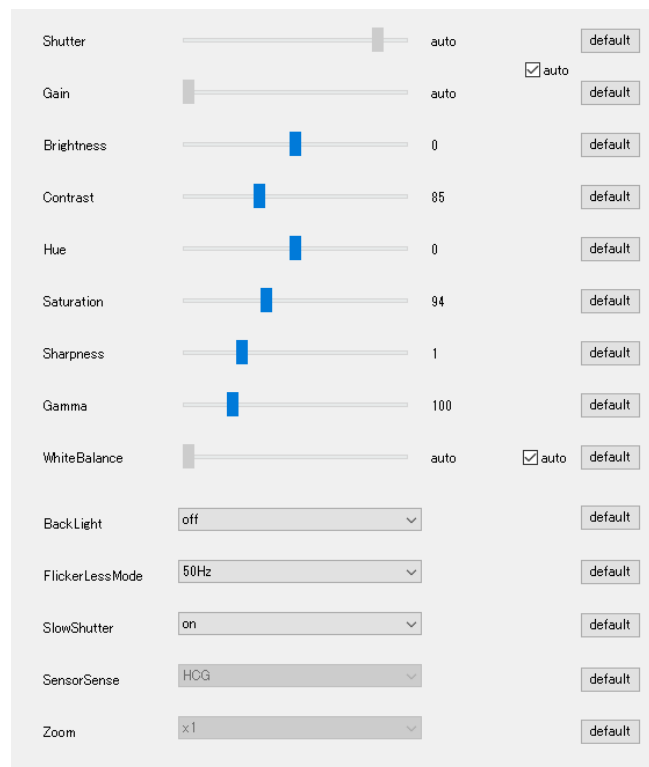


Fig.7 Camera Control window

3.3.1. Brightness

Increasing the value will increase the image brightness.



Brightness@-128



Brightness@0



Brightness@127

*The pictures were taken by WAT-01U2.

Camera	Minimum	Maximum	Default
WAT-01U2 / WAT-02U2D	-127	128	0
WAT-03U2 / WAT-03U2D			10
WAT-05U2M / WAT-06U2 / WAT-06U2D / WAT-07U2 / WAT-07U2D			30

3.3.2. Contrast

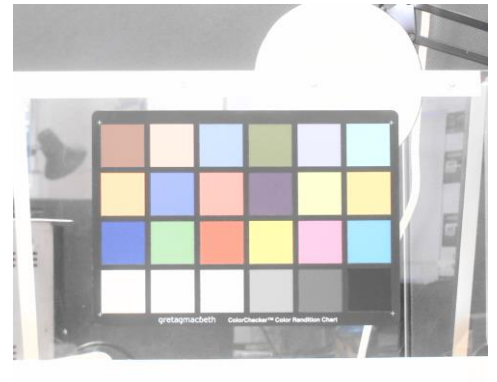
Increasing the value will increase the contrast



Contrast@0



Contrast@85



Contrast@255

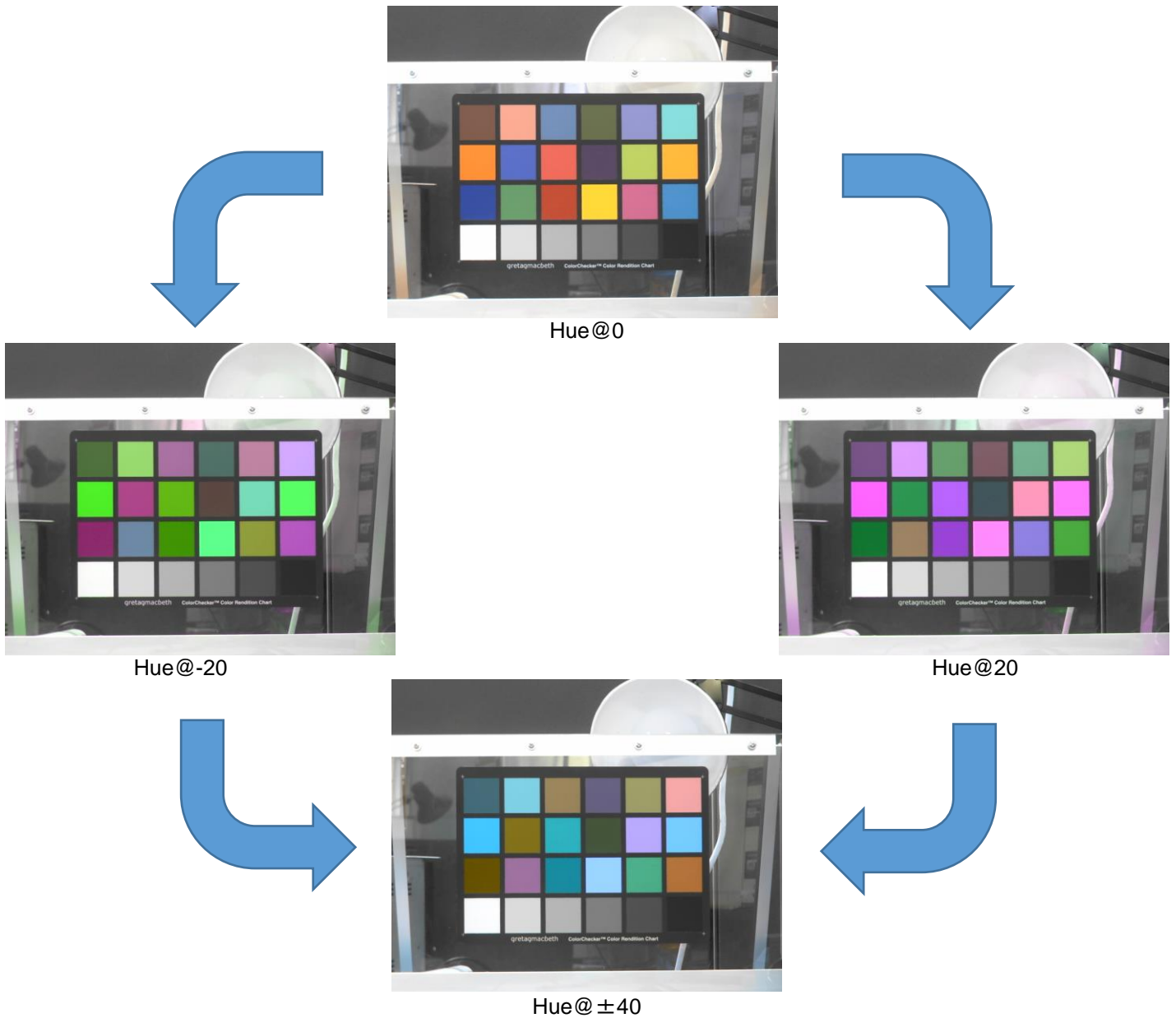
*The pictures were taken by WAT-01U2.

Camera	Minimum	Maximum	Default
WAT-01U2 / WAT-02U2D	0	255	85
WAT-03U2 / WAT-03U2D			95
WAT-05U2M / WAT-06U2 / WAT-06U2D / WAT-07U2 / WAT-07U2D			64

3.3.3.Hue

The image hue can be adjusted.

The hue is varied so as to change in a hue circle and will have same hue at “±40”.



*The pictures were taken by WAT-01U2.

Camera	Minimum	Maximum	Default
WAT-01U2 / WAT-02U2D WAT-03U2 / WAT-03U2D WAT-05U2M / WAT-06U2 / WAT-06U2D	-40	+40	0

*Since the WAT-07U2 / WAT-07U2D is a monochrome camera, so this setting item is not available.

3.3.4.Saturation

Increase in this value increases the color saturation of the image.



Saturation@0



Saturation@94



Saturation@255

*The pictures were taken by WAT-01U2.

Camera	Minimum	Maximum	Default
WAT-01U2 / WAT-02U2D	0	255	94
WAT-03U2 / WAT-03U2D			100
WAT-05U2M / WAT-06U2 / WAT-06U2D			80

*Since the WAT-07U2 / WAT-07U2D is a monochrome camera, so this setting item is not available.

3.3.5.Sharpness

Increase in this value will emphasize the edges of inside the image and increase the Sharpness.



*The pictures were taken by WAT-01U2.

Camera	Minimum	Maximum	Default
WAT-01U2 / WAT-02U2D WAT-03U2 / WAT-03U2D WAT-05U2M / WAT-06U2 / WAT-06U2D / WAT-07U2 / WAT-07U2D	0	4	1

3.3.6.Gamma

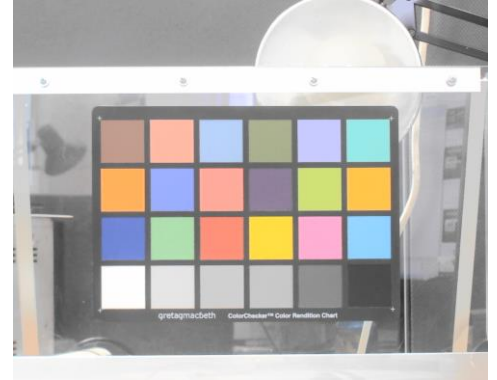
The function is for the adjustment of the gradation characteristics curve of the image to compensate for the Gamma characteristics (image gradation response characteristics) of the display.



Gamma@48



Gamma@100



Gamma@300

*The pictures were taken by WAT-01U2.

Camera	Minimum	Maximum	Default
WAT-01U2 / WAT-02U2D WAT-03U2 / WAT-03U2D WAT-05U2M / WAT-06U2 / WAT-06U2D / WAT-07U2 / WAT-07U2D	48	300	100

3.3.7.White Balance

The White Balance function is used to calibrate “white” color under varying color temperature lighting conditions.

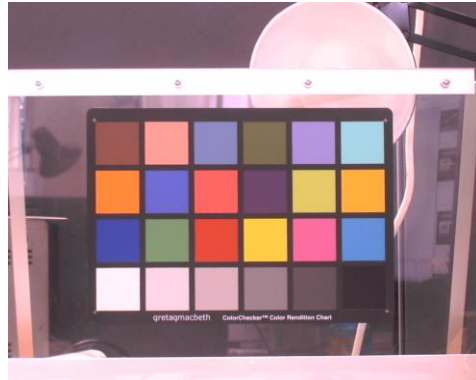
Default: “auto”. The default value in manual adjustment mode is “4600”.

The White Balance of the image will be optimally adjusted per the value selected for the particular color temperature environment.

When Auto is “ON”, the camera will automatically adjust the White Balance by judging the lighting conditions in the image being shot.



Auto White Balance



Manual White Balance@4600

*The pictures were taken by WAT-01U2.

Camera	Minimum	Maximum	Default
WAT-01U2 / WAT-02U2D WAT-03U2 / WAT-03U2D WAT-05U2M / WAT-06U2 / WAT-06U2D	2800	6500	Auto (4600)

*Since the WAT-07U2 / WAT-07U2D is a monochrome camera, so this setting item is not available.

3.3.8. Backlight Compensation

The Backlight Compensation function adjusts the exposure of the center of the image to compensate for the dark shadow created due to lighting from the back of the object.
"0" (Backlight Compensation OFF) or "1" (Backlight Compensation ON) can be selected.



Backlight Compensation OFF



Backlight Compensation ON

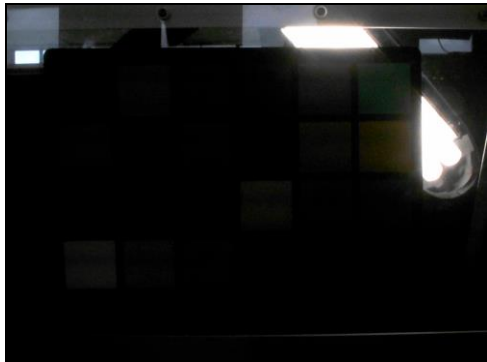
*The pictures were taken by WAT-01U2.

Camera	Minimum	Maximum	Default
WAT-01U2 / WAT-02U2D WAT-03U2 / WAT-03U2D WAT-05U2M / WAT-06U2 / WAT-06U2D / WAT-07U2 / WAT-07U2D	0	1	0 (OFF)

3.3.9.Gain

Higher the value set, the higher the gain (amplification) of the signal, which will increase the brightness of the image. However, the noise element of the image will also be amplified. The settings can be made by manually controlling the exposure items on the camera control tab described later.

*This function is not adjustable with Windows XP and older OS.



Gain@0



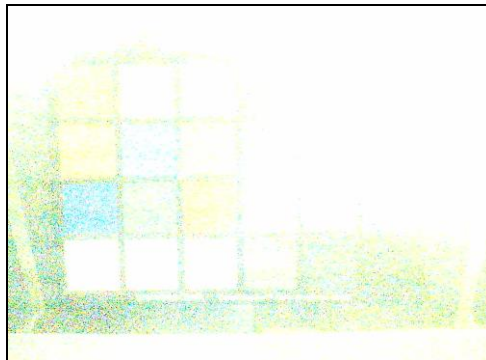
Gain@12



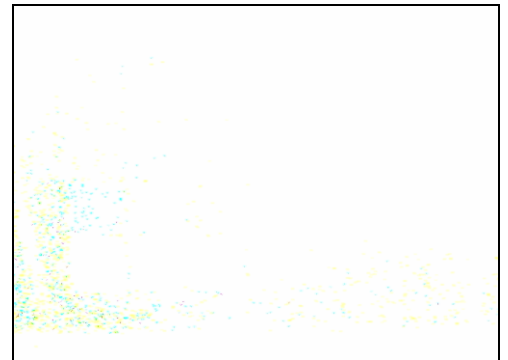
Gain@24



Gain@36



Gain@48



Gain@72

*The pictures were taken by WAT-01U2, and the exposure was fixed to "-8".

Camera	Minimum	Maximum	Default
WAT-01U2 / WAT-02U2D	0	24	0
WAT-03U2 / WAT-03U2D WAT-05U2M / WAT-06U2 / WAT-06U2D / WAT-07U2 / WAT-07U2D		72	

3.3.10. PowerLine Frequency(Anti Flicker)

Proper setting of this feature is used to compensate for flicker caused by environments such as lighting with fluorescent lighting.

Selection is made between either "50Hz" or "60Hz".

Please select the frequency which matches the power mains frequency of the environment which the camera is used.

This function is active only when the Exposure function is set to "Auto".

*This function is not available with Windows XP and older OS.



FlickerLess@50Hz



FlickerLess@60Hz

*The pictures were taken by WAT-01U2.

*The mains power frequency at the location of the captured images is "50Hz".

Camera	Default
WAT-01U2 / WAT-02U2D WAT-03U2 / WAT-03U2D	50Hz
WAT-05U2M / WAT-06U2 / WAT-06U2D / WAT-07U2 / WAT-07U2D	60Hz

3.4.Video Capture Filter Camera Control

The settings related to shutter speed is adjusted from the Camera Control of the Video Capture Filter menu. The settings window is accessed from the Options -> Video Capture Filter: Camera Control menu at the top of the window.

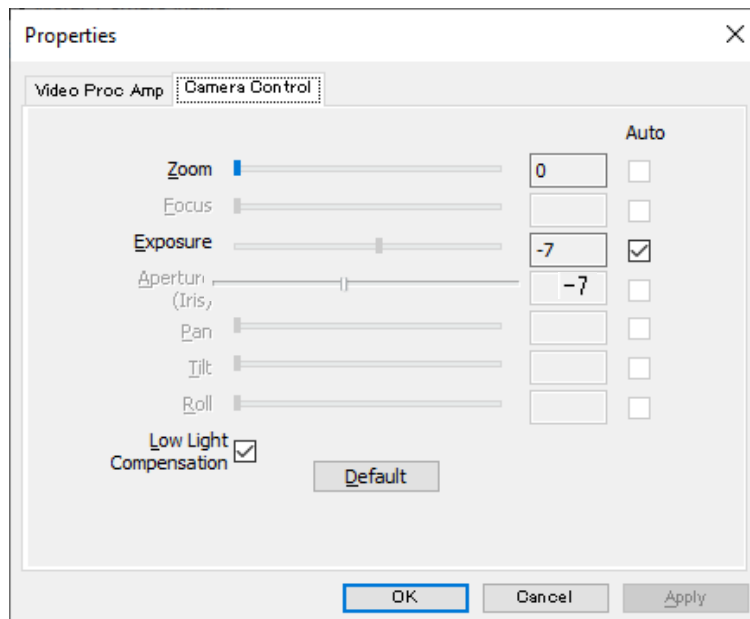


Fig.8 Video Capture Filter Camera Control window

The same setting is accessible from Panels->Camera Control menu at the top of the window.



Fig.9 Camera Control window

3.4.1.Zoom

Switches the zoom magnification.

This function is available in WAT-05U2M / WAT-06U2 / WAT-06U2D / WAT-07U2 / WAT-07U2D.

The default setting is "0".

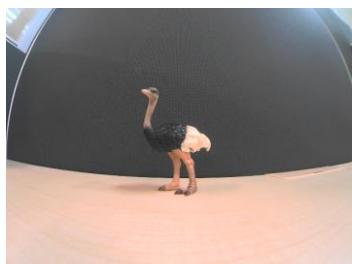
The zoom setting is always operable, but only works under the specific Color Space / Compression, Image Size and frame rate conditions.

The table below shows the combinations of the Color Space / Compression, Image Size, and frame rate that zoom works.

Color Space / Compression	Image Size	Frame rate (fps)	Zoom
YUY2	1920 x 1080	5	×
	320 x 240	30	×
		15	×
	640 x 480	30	×
		15	○
1280 x 720	7.5	○	
MJPEG	1920 x 1080	30	×
		15	×
	320 x 240	30	×
		15	×
	640 x 480	30	○
		15	○
	1280 x 720	30	○
		15	○

The following table shows the magnification for each setting value.

Image Size	Zoom Value	Magnification
640 x 480	0	x 1
	1	x 1.38
	2	x 2.25
1280 x 720	0	x 1
	1	x 1.2
	2	x 1.5



Zoom@0



Zoom@1

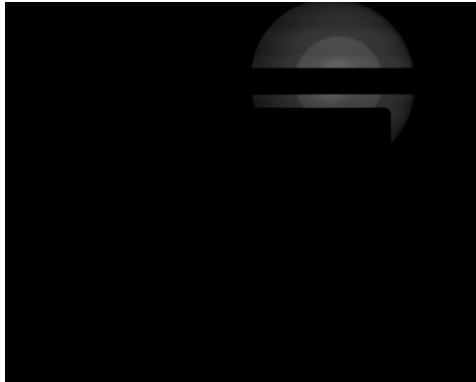


Zoom@2

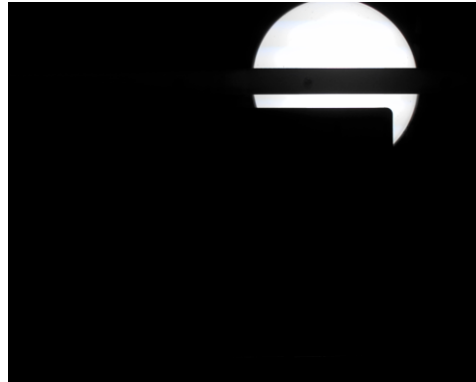
3.4.2.Exposure (Shutter)

When the exposure value is x, the shutter speed is 2 raised to the power of x.
 As the exposure value increases, the image becomes brighter.
 The default is set to "Auto".

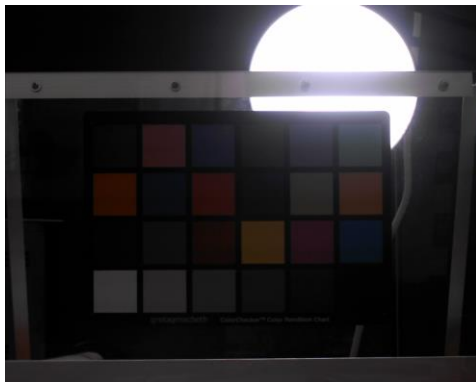
The frame rate will be reduced if the Color Space / Compression and Image Size were set to 30fps or 60fps. For example, the frame rate will be reduced to approximately 15fps at Exposure@-4.



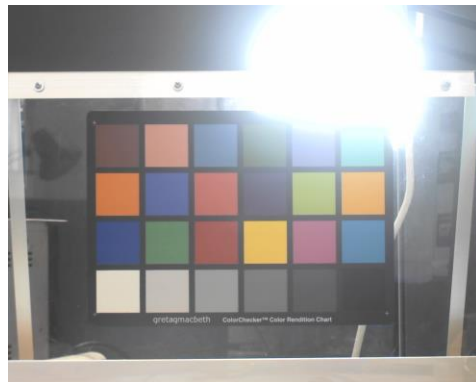
Exposure @-13



Exposure @-10



Exposure @-7

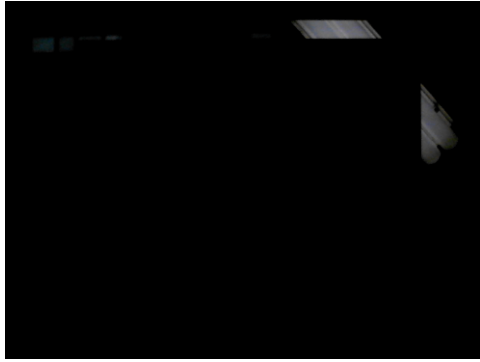


Exposure @-4

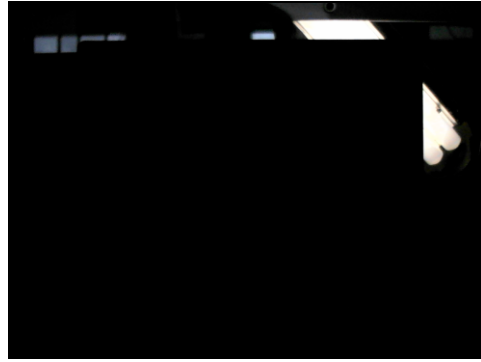
*The pictures were taken by WAT-01U2, and the gain was fixed to "0".

Camera	Minimum	Maximum	Default	
WAT-01U2 / WAT-02U2D	-13 (1/8192 sec.)	-4 (1/16 sec.)	Auto *(-7: 1/128 sec.)	
WAT-03U2 / WAT-03U2D		1 (2 sec.)		
WAT-05U2M / WAT-06U2		-2 (1/4 sec.)		Auto (-10: 1/1024 sec.)
WAT-06U2D				Auto (-9: 1/512 sec.)
WAT-07U2				Auto (-11: 1/2048 sec.)
WAT-07U2D				Auto (-11: 1/2048 sec.)

*The value in () is the default when manual control is used.



Exposure @-13



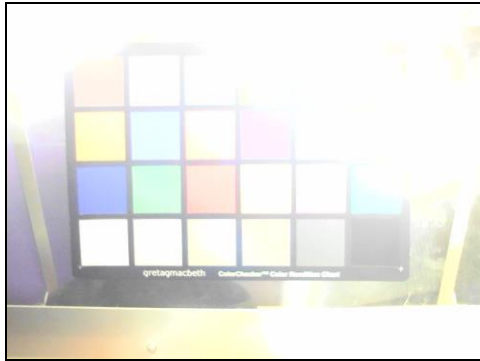
Exposure @-10



Exposure @-7



Exposure @-4



Exposure @-1



Exposure @1

*The pictures were taken by WAT-03U2, and the gain was fixed to "0".

3.4.3.Low Light Compensation (SlowShutter)

The default setting is "ON" (checked box). When Low Light Compensation is "ON", the camera will decrease the shutter speed to increase sensitivity, if the camera judges that there is not enough illumination. In this mode, the frame rate will decrease.

*The shutter speed does not change due to Low Light Compensation when the frame rate is 7.5fps on WAT-03U2 / WAT-03U2D.

*The shutter speed does not change due to Low Light Compensation when the frame rate is 5fps or 7.5fps on WAT-05U2M / WAT-06U2 / WAT-07U2 / WAT-06U2D / WAT-07U2D.

*This function is not available with Windows XP and older OS.

3.5.Camera Control

The setting window is accessed from the Panels -> Camera Control at the top of the WaterCameraViewer window.

Almost all functions are set from the Video Capture Pin or Video Capture Filter, and Camera Control. However, "Sensor Sense" can be set only from the Camera Control window.

3.5.1.Sensor Sense

The default setting is "HIGH". When the setting is "LOW", the sensitivity of the image sensor is half in the "HIGH" setting. "LOW" setting is effective in the very bright areas, such as in the sunlight. This function is available for WAT-05U2M / WAT-06U2 / WAT-06U2D / WAT-07U2 / WAT-07U2D.



Fig.10 Sensor Sense



SensorSense @HCG



SensorSense @LCG

*The exposure was fixed to "-12", and the gain was "0".

*This function doesn't work on Windows 8 or Windows 8.1.

4. GPIO Connection

The WAT-01U2 / WAT-03U2/ WAT-06U2 / WAT-07U2 has a 2 pin GPIO (General Purpose Input/Output) connector at the back of the camera. Currently, an external trigger for capturing Snapshot is assigned to this connection.

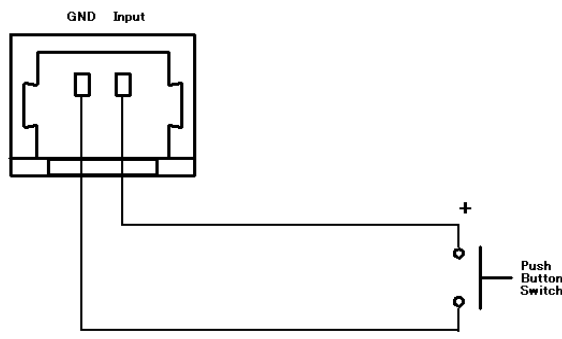
*The WAT-02U2D / WAT-03U2D / WAT-05U2M / WAT-06U2D / WAT-07U2D doesn't have this function.

4.1.Snapshot Function

To use the GPIO Snapshot function, refer to the figure below to connect the 2 pin cable to the camera GPIO connector and use a push button switch as the trigger is recognized by closing of the circuit.

When the button is pressed (circuit is closed), the camera will stop the video capture and switch to the static image capture. A static image approximately 1 second after the button is pressed will be output. Thereafter, the camera will revert back to the video capture.

From the time when the button is pressed until the Snapshot is output, the camera will adjust the exposure and white balance. During this time, please note that a good Snapshot may not be captured, if the environment changes, such as lighting conditions.



4.1.1.Method to Confirm Operation (saving of static image)

The saving of the image file captured by the Snapshot function is done by using the WatecCameraViewer (available for download from our website: <http://www.watec.co.jp/>).

While the WatecCameraViewer is open, and the video image can be previewed, shorting the GPIO circuit will save a Snapshot to an image file (.jpg or .bmp).
(The image file will be saved in the same folder as where the WatecCameraViewer is operating)

The same Snapshot function can be operated from the WatecCameraViewer.
(Capture->Trigger for Still Capture)

*Please heed caution to the following when using the WatecCameraViewer in the Windows Vista/7/8/8.1/10 OS environments:

- When starting the program from C:\%ProgramFiles%.. with UAC (User Account Control) enabled, make sure to start up the WatecCameraViewer with Administrator rights, as creating and saving of new files in this folder/directory tree is not permitted without Administrator rights. (Right Click on WatecCameraViewer executable file -> Run as administrator)

Please refer to the following section for setting of the image file to be saved.

4.1.2. Image File Setting

The image file format and size can be changed in the Options -> Still Capture Pin setting.

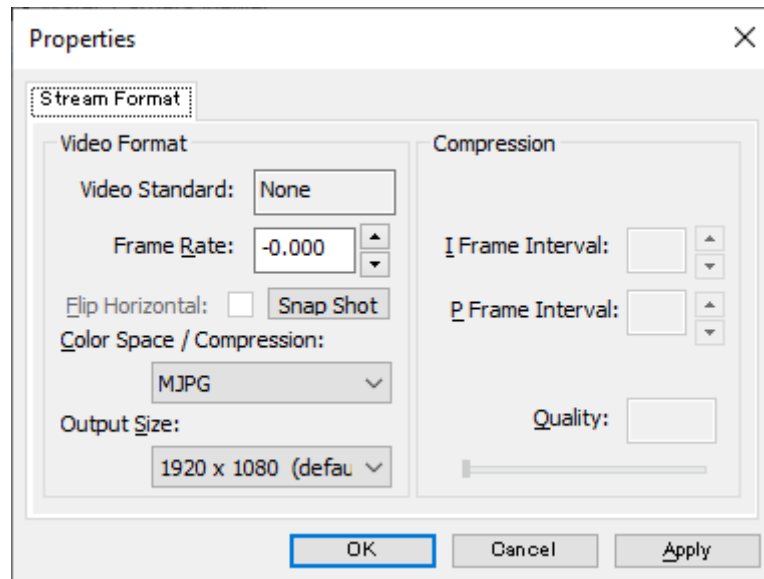


Fig.11 Still Capture Pin window

*The "Snap Shot" button in this menu is not active. Please trigger the Snapshot from the menu. (Capture -> Trigger for Still Capture)

*In Windows XP, the Still Capture Pin setting is fixed. Setting of WAT-01U2 / WAT-02U2D is MJPG and 1920x1080. Setting of WAT-03U2 / WAT-03U2D is MJPG and 1280x960. (A window as shown below will appear, however the settings cannot be changed)

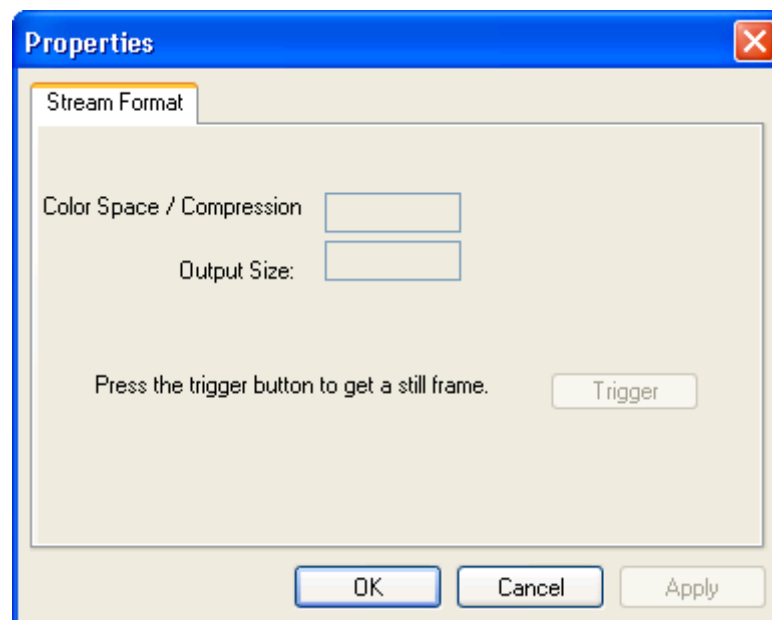


Fig.12 Still Capture Pin window (in Windows XP)

4.1.2.1. Color Space/Compression (CompressionMode)

Same as Video Capture Pin, select from YUY2 and MJPG.

YUY2: Snapshot image file is saved as .bmp file.

MJPG: Snapshot image file is saved as .jpg file.

*In Windows XP, MJPG (.jpg file) setting is fixed.

4.1.2.2. Output Size (ImageSize)

Image file will be saved at the image size selected.

The still image output size of the WAT-01U2 / WAT-02U2D is selected from the following 8 selections.

Image size (H x V)	Aspect Ratio	No. of Pixels	Resolution ※
1920 x 1080	16:9	2,073,600	FHD 1080p
160 x 120	4:3	19,200	Quarter-Quarter-VGA
176 x 144	11:9	25,344	Quarter-CIF
320 x 240	4:3	76,800	Quarter-VGA
640 x 480	4:3	307,200	VGA
1280 x 1024	5:4	1,310,720	SXGA
1280 x 720	16:9	921,600	HD 720p
1280 x 800	16:10	1,024,000	WXGA

The still image output size of the WAT-03U2 / WAT-03U2D is selected from the following 4 selections.

Image size (H x V)	Aspect Ratio	No. of Pixels	Resolution ※
1280 x 960	4:3	1,228,800	Quad-VGA
320 x 240	4:3	76,800	Quarter-VGA
640 x 480	4:3	307,200	VGA
1280 x 720	16:9	921,600	HD 720p

The video output size of the WAT-06U2 / WAT-7U2 is selected from the following 4 selections.

Image size (H x V)	Aspect Ratio	No. of Pixels	Resolution ※
1920 x 1080	16:9	2,073,600	FHD, 1080p
320 x 240	4:3	76,800	Quarter-VGA
640 x 480	4:3	307,200	VGA
1280 x 720	16:9	921,600	HD 720p

*Resolution:

VGA: Video Graphics Array

SXGA: Super-XGA

WXGA: Wide-XGA

*In Windows XP, the setting is fixed.

Setting of WAT-01U2 / WAT-02U2D is 1920x1080. Setting of WAT-03U2 / WAT-03U2D is 1280x960.

*Still images will be saved as the angle of view of 30fps when the frame rate is set with 60fps on WAT-03U2 / WAT-03U2D.

5. Remarks: Operation on Mac OS X

We suppose that the Watec USB Camera is mainly used under Windows OS environment, however, it is possible to operate under the Mac OS X environment with various limitations of the function if you meet the following conditions. (Note: WatecCameraViewer cannot be operated on Mac OS X)

- Since Mac OS X version 10.4.9
- Equipped USB2.0 port

*Please note that even if the prescribed conditions is satisfied, it cannot always be operated.

The limitations of function under Mac OS X are as follows.

Video Capture Pin

Color Space/Compression: Settings are unchangeable.

Output Size: Output size is changeable depending on the capture software.

Video Capture Filter

The settings cannot be changed at all items. Each item will be the default value.

Snapshot Function

The snapshot functions cannot be operated.

We verified operations under following environments.

OS:	Mac OS X 10.8.4
Processor:	2.7GHz Intel Core i7
Memory:	16GB 1600MHz DDR3
Capture software:	QuickTime Player

6. Remarks: Operation on Android OS

If your OS is Android 4.0 or later, you can preview, capture, and change properties of the video by using the Watec USB Camera compatible app. However, depending on the device used, it may not operate normally due to compatibility problems with the camera. Please contact our sales department for details.