

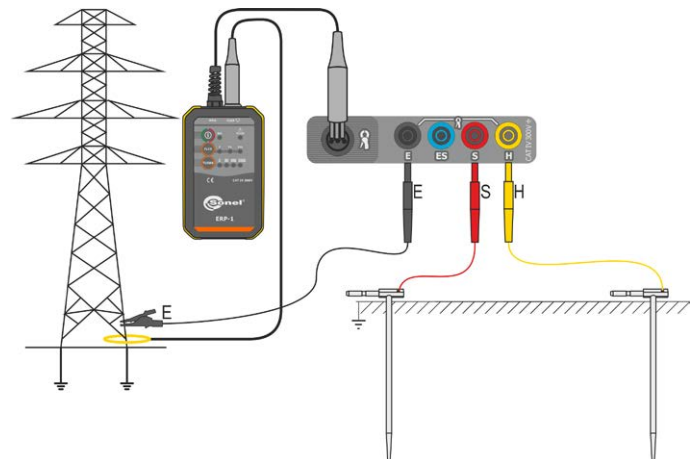
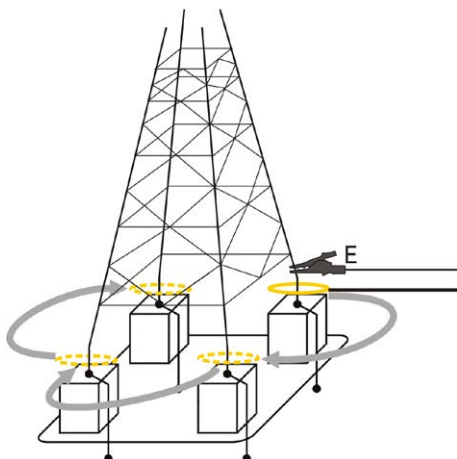


Flexibility in measurements

Features

The SONEL ERP-1 adapter, in combination with meters that can generate measurement current of 200 mA, serves for measuring of resistance of multiple groundings without disconnecting control connection clamps. The flexible, big diameter coil allows to measure earth resistance of e.g. transmission towers - including lattice poles - without shutting down the power line.

Ergonomic design of the adapter, its convenient housing and simple operation make earth resistance measurements on transmission towers and pylons quick and problem-free. The protection degree of the adapter is IP67, which makes it suitable for operation in muddy and rain conditions.



Technical specifications

Flexible clamps

FS-2	
output level	100 mV / 1 A
length	4000 mm 157.5"

FSX-3	
output level	300 mV / 1 A
length	2000 mm 78.7"

Electrical specification

Measurement category acc. to IEC 61010-1	CAT IV 300 V
Measurement range	up to 5 A
Operating frequency	
for 50 Hz networks	125 Hz
for 60 Hz networks	150 Hz
Power supply	3x LR6 1.5 V battery or 3x NiMH LR6 1.2 V rechargeable battery

Other data

Dimensions	146 x 88 x 33 mm 5.7" x 3.5" x 1.3"
Weight with batteries	340 g 0.7 lbs
Weight without batteries	270 g 0.6 lbs
Operating temperature	-10...+50°C 14...122°F
Storage temperature	-20...+80°C -4...176°F
Humidity	20...90%
Ingress protection	IP67

Sets



ERP-1 adapter
WAADAERP1



ERP-1 adapter with FS-2 flexible clamp and case
WAADAERP1V2



ERP-1 adapter with FSX-3 flexible clamp and case
WAADAERP1V3

Optional accessories



FS-2 flexible clamp (fi 1260 mm), output level 100 mV / 1 A
WACEGFS20KR



FSX-3 flexible clamp (fi 630 mm), output level 300 mV / 1 A
WACEGFSX30KR



M6 carrying case
WAFUTM6



XL8 carrying case
WAWALXL8