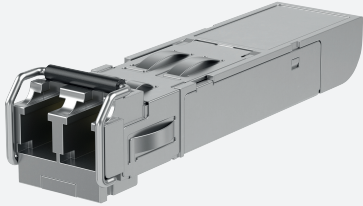


# SFP: 100BASE-FX Fast Ethernet Single-mode Fiber Extended Temperature



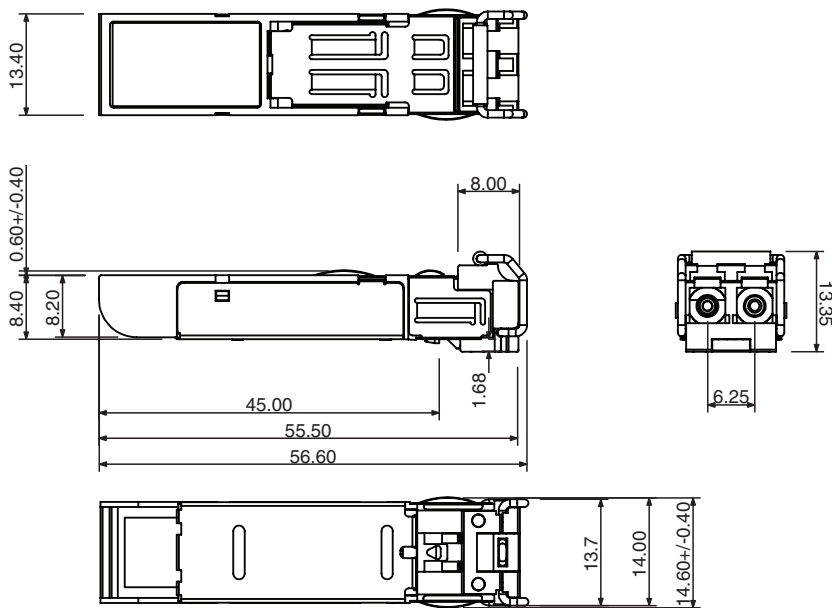
## SFP-S-120KM-F-W

- Industry standard small form pluggable (SFP) package
- SFP Multi-Source Agreement compliant
- Hot pluggable
- Class 1 laser product complies with EN 60825-1
- Single power supply 3.3V
- TTL signal detect indicator
- Duplex LC connector
- Extended temperature range: -40 to 85° C

Single-mode 120KM 100BASE-FX Fast Ethernet Fiber SFP



### Dimensions



### Technical Data

#### Ethernet Interface

Standards

IEEE802.3u 100BASE-FX      yes

#### Interface 1

Interface type      100BASE-FX Fast Ethernet fiber

Physical      SFP, Hot pluggable

Transfer rate      155 Mbps

#### Fiber optics functionality

## Technical Data

Wave length	1550 nm
Cable type	9/125µm Single-mode
Cable length	max. 120 km
Connector type	1 Duplex LC
Transmit power (optical)	0 ... 5 dBm
Receive sensitivity	-35 ... 0 dBm
Link budget	35 dBm
<b>Directive conformity</b>	
Electromagnetic compatibility	
Directive 2014/30/EU	EN55024, IEC 61000-4-2, IEC 61000-4-3, IEC 61000-4-4, IEC 61000-4-6, IEC 61000-4-8
<b>Standard conformity</b>	
Emitted interference	CISPR 22 , FCC Part 15 Subpart B Class A , EN61000-6-4, IEC61000-6-4
Noise immunity	EN 55024
Standards	SFP Multi-Source (MSA) compliant Class 1 laser product complies with EN 60825-1
<b>Ambient conditions</b>	
Ambient temperature	-40 ... 85 °C (-40 ... 185 °F)
Storage temperature	-40 ... 85 °C (-40 ... 185 °F)
Relative humidity	max. 95 %
<b>Mechanical specifications</b>	
Mass	17 g