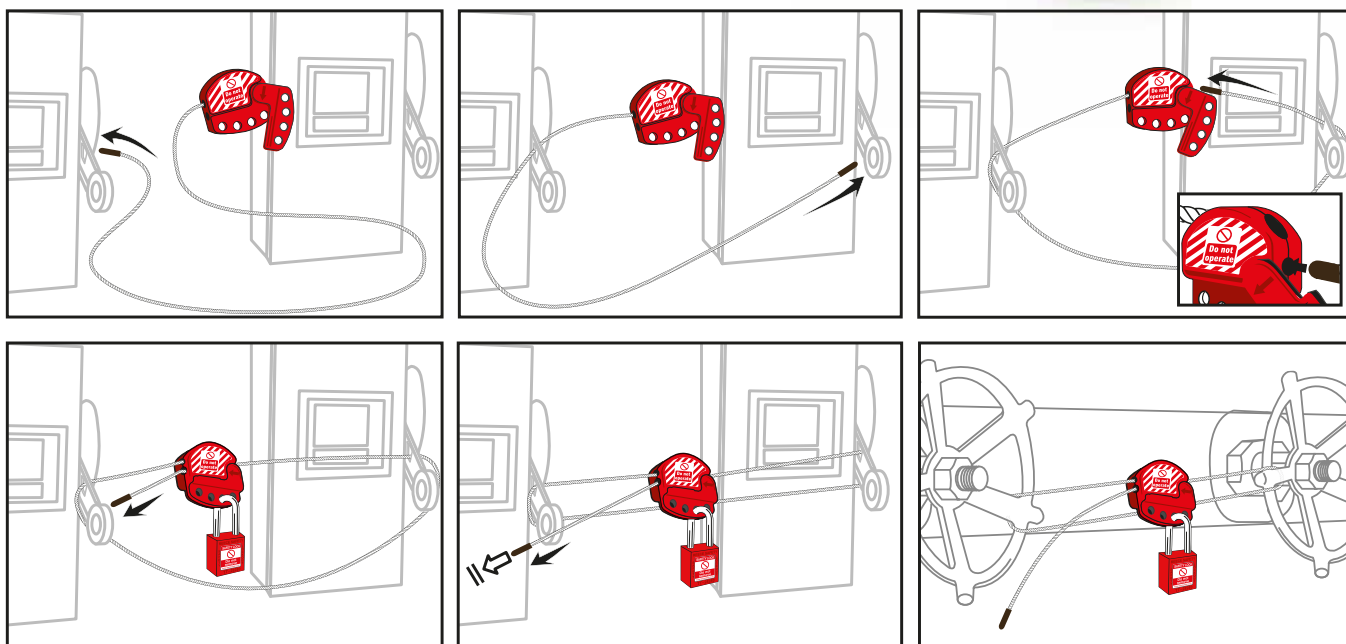
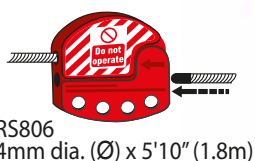


### DESCRIPTION

This design of cable lockout removes the need for the specific tool to adjust and tighten the cable.

Integrated safety hasp with cable cinching function, cinches tight to remove slack and hold firm.



### KEY FEATURES AND BENEFITS

- Tough, flexible 1.8m long x 4mm diameter coated steel cable
- Durable, lightweight thermoplastic body withstands chemicals and extreme environments
- Accepts up to 4 padlocks for multiple lockout applications
- Any slack in the cable can be taken out without the need to remove padlocks

### APPLICATION

- Commercial, Industrial, Lockout/Tagout systems and Domestic
- Ideal for use on gate valves or to lockout multiple lockout devices in place of a padlock
- Very good in restricted space MCB panels where individual padlocks prevent the door closing  
cable lockout through MCB lockouts and hasp and locks give a good solution

### MATERIAL

- Patented 4mm diameter multi-strand steel cable is insulated with clear plastic coating, PBT and PC Thermoplastic (PVC Free)