

RFR 6000

greenMachine[®] Rack Frame

greenMachine RFR 6000 19" Rack Frame for 1 or 2 greenMachines

Features

- Compact 1 RU design
- Accommodates one or two greenMachines
- Innovative mounting for up to two RPS A100 power supplies
- Rack position adjustable to Recessed, Flush or Protruded



Description

The greenMachines are ideally suited for standalone applications but these powerful processing platforms reach their full potential when used within a system design.

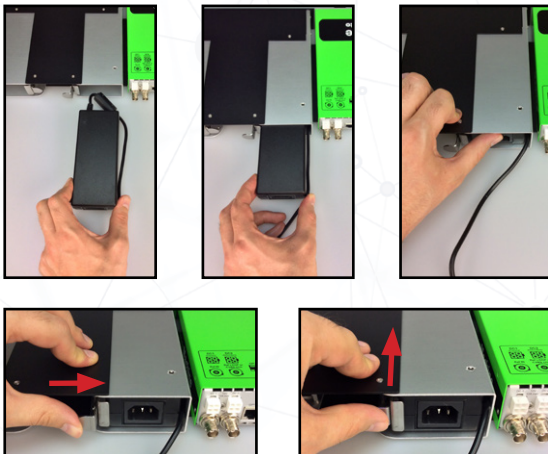
The RFR 6000 is a compact and flexible rack mounting solution. It can be set up to hold up to two greenMachines. Regardless which setup, the RFR 6000 also provides an innovative mounting solution for two RPS A100 power supplies.

Specifications

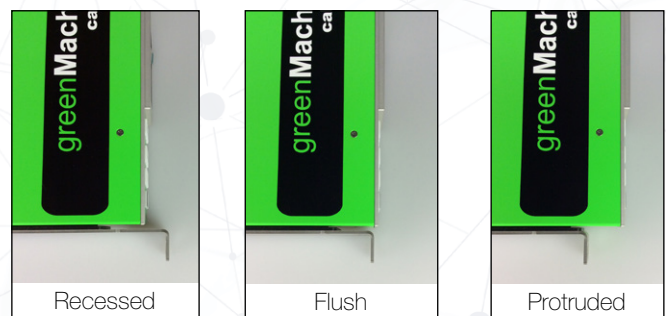
Height	1RU
Width	19" rack mount
Depth Single Module	29.7cm (11.69")
Depth Two Modules	44.7cm (17.59")
Weight	1.5 kg (3.31 Lbs)
Model #	RFR 6000 - (EAN# 4250479324466)
Includes	RFR 6000 rack frame, Phillips screwdriver and quick reference guide.



Two greenMachines setup



Power supply mounting



Adjustable mounting position