

# LYNX

# O SP 5852 M

**fiber**

**SERIES 5000**

**CardModules**

## Five Channel 1 > 2 Optical Splitter (90%-10%)

### Description

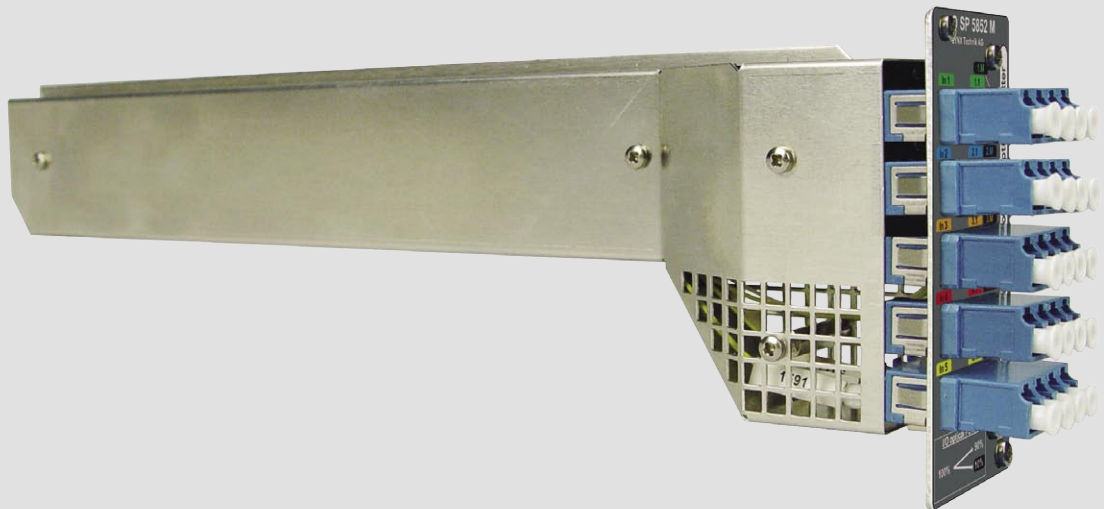
The OSP 5852 M provides 5 independent 1>2 optical splitters / combiners in a single module. For each channel the optical input is split into 2 outputs, each one having 90% of the input power and the other 10% which is useful for monitoring applications.

The module is passive in operation, meaning it requires no power, and is mechanically compatible with all Series 5000 rack frames and installs from the rear of the rack.

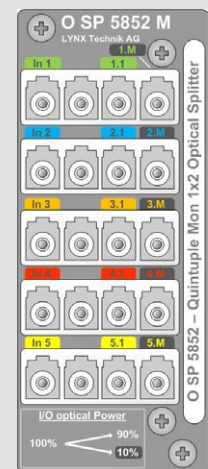
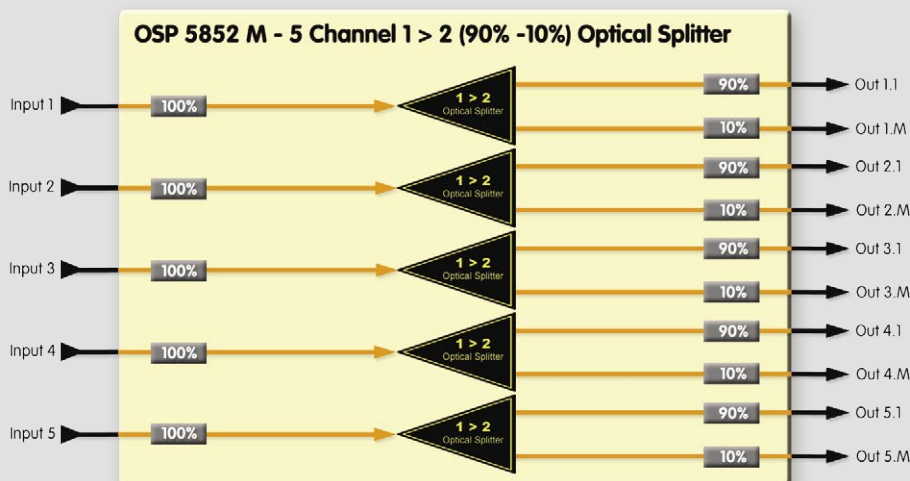
### Features

- Five precision 1>2 optical splitters in a single module
- Each channel has 90% / 10% split ratio
- LC - PC connections (singlemode)
- Compatible with all Series 5000 rack frames (2RU and 1RU)
- Occupies one card slot

**FIBER O SP 5852 M**



# Passive Fiber



**Backplane**

## Five Channel 1 > 2 Optical Splitter (90%-10%)

### Specifications

Optical I/O	
Inputs	5 ( 1 per channel )
Outputs	10 ( 2 per channel )
Connector type	LC - PC (singlemode)
Operating Wavelengths	1260nm - 1650nm
Performance ( each channel )	
Insertion loss (incl. connector)	4.0 dB
Split ratio %	90/10
Polarization dependant loss	max 0.3dB
Return Loss	> 55dB
Directivity	> 55dB
Max input power	500mw
Mechanical	
Size	85mm x 286mm (not incl. connectors)
Weight	150 g
Ambient	
Temperature	-20°C to 85°C Maintaining specifications
Humidity	90% Max non condensing

Specifications subject to change

### Ordering Information

Model #	Part Number	Description	Includes
O SP 5852 M	1000025852	Five Channel 1>2 Optical Splitter (90%-10%)	CardModule + Mounting Screws + Reference Manual (on CD)