

1 > 8 Optical Splitter

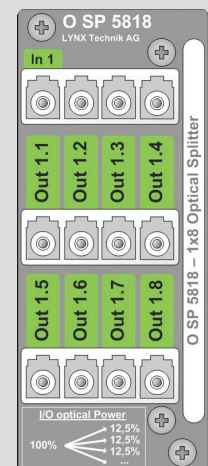
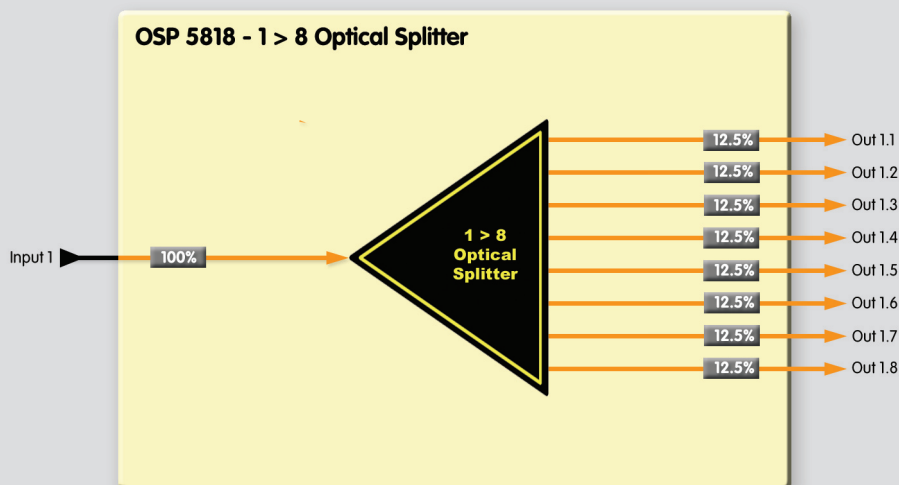
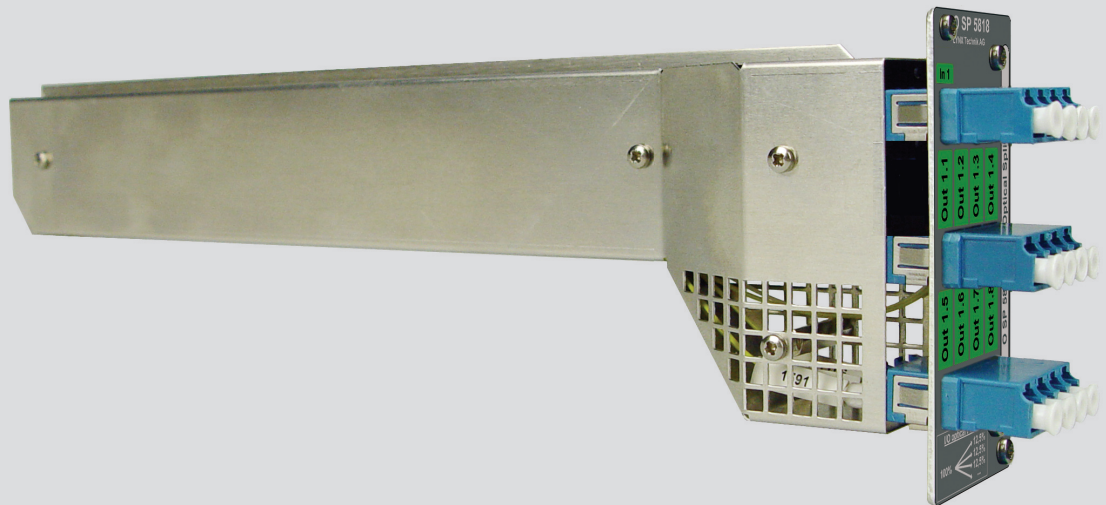
Description

The OSP 5818 is a 1 > 8 optical splitter / combiner. The optical input is split into 8 outputs, each one having 12.5% of the input power.

The module is passive in operation, meaning it requires no power, and is mechanically compatible with all Series 5000 rack frames and installs from the rear of the rack.

Features

- Precision 1>8 optical splitter
- 12.5% / 12.5% / 12.5% / 12.5% / 12.5% / 12.5% / 12.5% / 12.5% split ratio
- LC - PC connections (singlemode)
- Compatible with all Series 5000 rack frames (2RU and 1RU)
- Occupies one card slot



Backplane

1 > 8 Optical Splitter

Specifications

Optical I/O	
Input	1
Outputs	8
Connector type	LC - PC (singlemode)
Operating Wavelengths	1260nm - 1650nm
Performance	
Insertion loss (incl. connector)	10.4 dB
Split ratio %	12.5/12.5/12.5/12.5/12.5/12.5/12.5/12.5
Polarization dependant loss	max 0.3dB
Return Loss	> 55dB
Directivity	> 55dB
Max input power	500mw
Mechanical	
Size	85mm x 286mm (not incl. connectors)
Weight	150 g
Ambient	
Temperature	-20°C to 85°C Maintaining specifications
Humidity	90% Max non condensing

Specifications subject to change

Ordering Information

Model #	Part Number	Description	Includes
O SP 5818	1000025812	1>8 Optical Splitter	CardModule + Mounting Screws + Reference Manual (on CD)