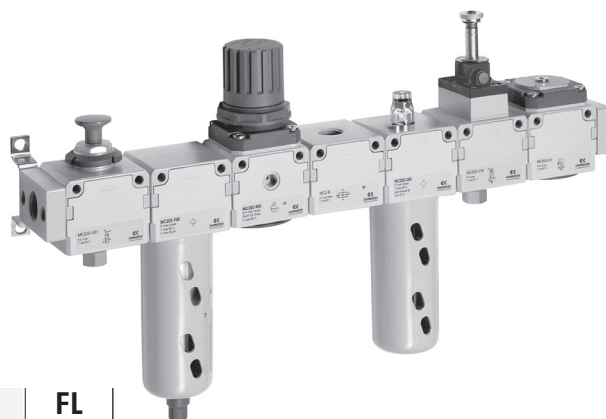


Series MC FRL Assembled

Connections: 1/4, 3/8, 1/2

The FRL Series MC in the assembled versions are easier to order (one single code) and to mount.



SERIES MC FRL ASSEMBLED

CODING EXAMPLE

| | | | | | | | | |
|----|---|----|---|---|---|---|---|----|
| MC | 2 | 02 | - | C | - | 5 | - | FL |
|----|---|----|---|---|---|---|---|----|

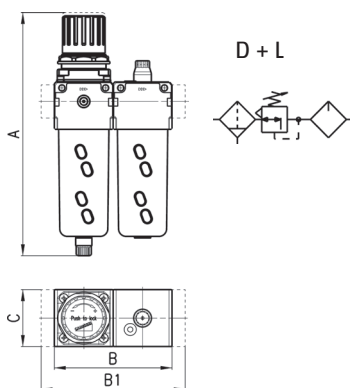
| | | |
|-----------|--|--|
| MC | SERIES: MC | |
| 2 | SIZE: 1 = 1/4 2 = 3/8 - 1/2 | C ASSEMBLY GROUP: C = D + L E = V01 + D + L FRL = F + R + L GN = D + L + V16 + AV HNA = V01 + D + L + V16 + AV + PRESS N.A. HNC = V01 + D + L + V16 + AV + PRESS N.C. N = V01 + D PN = D + V16 + AV QN = V01 + D + V16 + AV TN = V01 + D + L + V16 + AV ZNA = V01 + D + V16 + AV + PRESS N.A. ZNC = V01 + D + V16 + AV + PRESS N.C. |
| 02 | CONNECTIONS: 04 = 1/4 38 = 3/8 02 = 1/2 | |
| 5 | FILTERING ELEMENT: 5 = 5 µm (upon request) 25 = 25 µm (standard) | FL VERSION: FL = with terminal flanges |
| FL | | |

ASSEMBLY GROUP KEY

| | | | |
|-----|--|-------|---|
| D | Filter-regulator 0-10 bar semi-automatic manual drain filtering element 25µm | F | Filter 25 µm |
| V01 | Valve 3/2 way manually operated | R | Regulator 0 - 10 bar |
| V16 | Valve 3/2 way electropneumatically operated | AV | Soft start valve |
| L | Lubricator | PRESS | Pressure switches (defined if N.C. or N.A.) |
| | | F13 | Filter 5µm or 25µm with automatic drain |

Assembly group C (see above for descriptions)

Including gauge and bracket



- ✓ Ex Stock
- 🔧 UK Assembly
- ☎ Please Call Sales Office

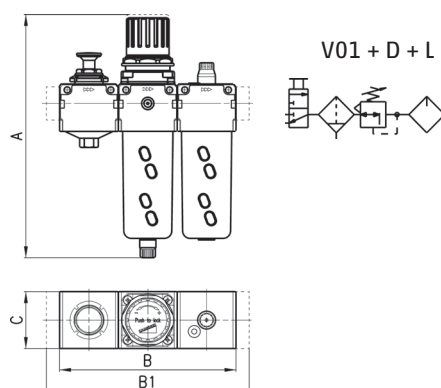
DIMENSIONS

| Part Number | Availability | A | B | B1 | C | Connection |
|---------------|--------------|-------|-----|-----|----|------------|
| MC104-C-25 | 🔧 | 193.5 | 90 | - | 45 | 1/4 |
| MC104-C-25-FL | 🔧 | 193.5 | - | 114 | 45 | 1/4 |
| MC238-C-25 | 🔧 | 256.5 | 124 | - | 60 | 3/8 |
| MC238-C-25-FL | 🔧 | 256.5 | - | 152 | 60 | 3/8 |
| MC202-C-25 | 🔧 | 256.5 | 124 | - | 60 | 1/2 |
| MC202-C-25-FL | 🔧 | 256.5 | - | 152 | 60 | 1/2 |

Please see page 216 for Series MC Accessories

Assembly group E (see above for descriptions)

Including gauge and bracket



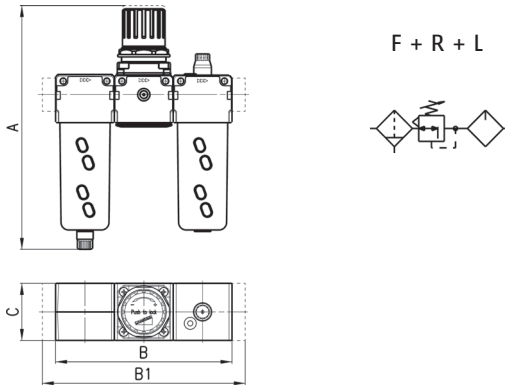
- ✓ Ex Stock
- 🔧 UK Assembly
- ☎ Please Call Sales Office

DIMENSIONS

| Part Number | Availability | A | B | B1 | C | Connection |
|---------------|--------------|-------|-----|-----|----|------------|
| MC104-E-25 | 🔧 | 193.5 | 135 | - | 45 | 1/4 |
| MC104-E-25-FL | 🔧 | 193.5 | - | 159 | 45 | 1/4 |
| MC238-E-25 | 🔧 | 256.5 | 186 | - | 60 | 3/8 |
| MC238-E-25-FL | 🔧 | 256.5 | - | 214 | 60 | 3/8 |
| MC202-E-25 | 🔧 | 256.5 | 186 | - | 60 | 1/2 |
| MC202-E-25-FL | 🔧 | 256.5 | - | 214 | 60 | 1/2 |

Assembly group FRL (see page 212 for descriptions)

Including gauge and bracket

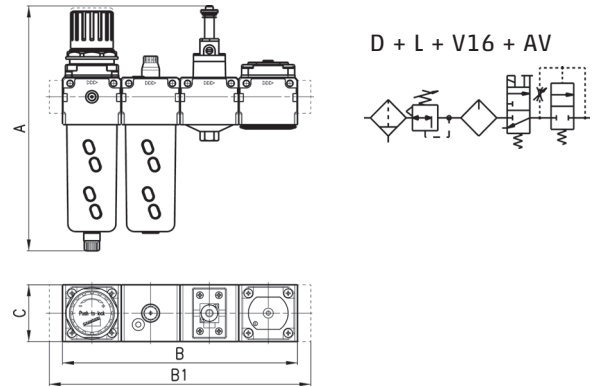


- ✓ Ex Stock
- ✎ UK Assembly
- ☎ Please Call Sales Office

| DIMENSIONS | | | | | | |
|-----------------|--------------|-------|-----|-----|----|------------|
| Part Number | Availability | A | B | B1 | C | Connection |
| MC104-FRL-25 | ✎ | 193.5 | 135 | - | 45 | 1/4 |
| MC104-FRL-25-FL | ✎ | 193.5 | - | 159 | 45 | 1/4 |
| MC238-FRL-25 | ✎ | 256.5 | 186 | - | 60 | 3/8 |
| MC238-FRL-25-FL | ✎ | 256.5 | - | 214 | 60 | 3/8 |
| MC202-FRL-25 | ✎ | 256.5 | 186 | - | 60 | 1/2 |
| MC202-FRL-25-FL | ✎ | 256.5 | - | 214 | 60 | 1/2 |

Assembly group GN (see page 212 for descriptions)

Including gauge and bracket

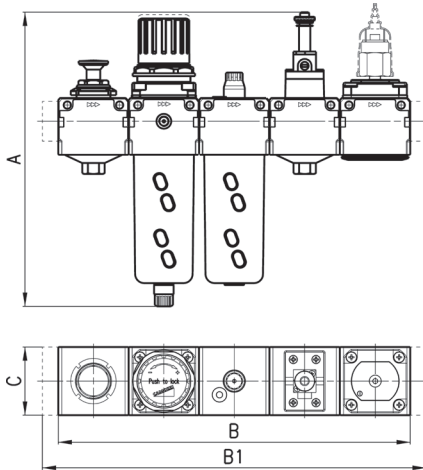


- ✓ Ex Stock
- ✎ UK Assembly
- ☎ Please Call Sales Office

| DIMENSIONS | | | | | | |
|----------------|--------------|-----|-----|-----|----|------------|
| Part Number | Availability | A | B | B1 | C | Connection |
| MC104-PN-25 | ✎ | 208 | 135 | - | 45 | 1/4 |
| MC104-PN-25-FL | ✎ | 208 | - | 159 | 45 | 1/4 |
| MC238-PN-25 | ✎ | 259 | 186 | - | 60 | 3/8 |
| MC238-PN-25-FL | ✎ | 259 | - | 214 | 60 | 3/8 |
| MC202-PN-25 | ✎ | 259 | 186 | - | 60 | 1/2 |
| MC202-PN-25-FL | ✎ | 259 | - | 214 | 60 | 1/2 |

Assembly group HN... (see page 212 for descriptions)

Including gauge and bracket

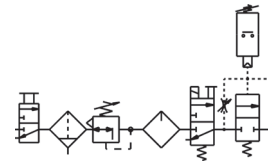


- ✓ Ex Stock
- ✎ UK Assembly
- ☎ Please Call Sales Office

| DIMENSIONS | | | | | | |
|-----------------|--------------|-----|-----|-----|----|------------|
| Part Number | Availability | A | B | B1 | C | Connection |
| MC104-QN-25 | ✎ | 208 | 180 | - | 45 | 1/4 |
| MC104-QN-25-FL | ✎ | 208 | - | 204 | 45 | 1/4 |
| MC238-QN-25 | ✎ | 259 | 248 | - | 60 | 3/8 |
| MC238-QN-25-FL | ✎ | 259 | - | 276 | 60 | 3/8 |
| MC202-QN-25 | ✎ | 259 | 248 | - | 60 | 1/2 |
| MC202-QN-225-FL | ✎ | 259 | - | 276 | 60 | 1/2 |

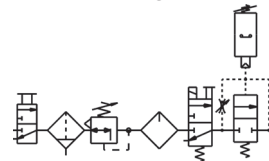
Please see page 216 for Series MC Accessories

V01 + D + L + V16 + AV + PRESS N.A.



HNA
Pressure switch normally open

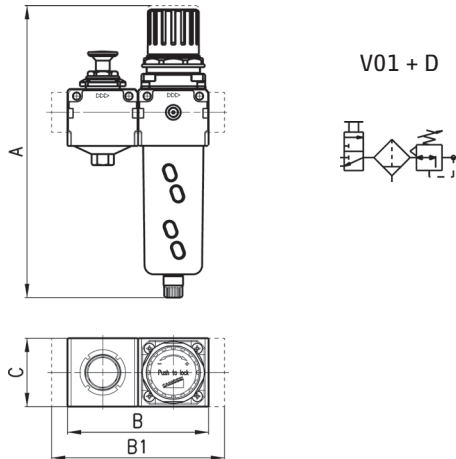
V01 + D + L + V16 + AV + PRESS N.C.



HNC
Pressure switch normally closed

Assembly group N (see page 212 for descriptions)

Including gauge and bracket



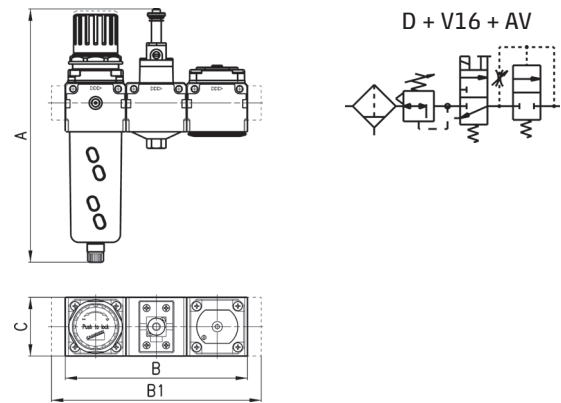
- ✓ Ex Stock
- ✎ UK Assembly
- ☎ Please Call Sales Office

| DIMENSIONS | | | | | | |
|---------------|--------------|-------|-----|-----|----|------------|
| Part Number | Availability | A | B | B1 | C | Connection |
| MC104-N-25 | ☎ | 193.5 | 90 | - | 45 | 1/4 |
| MC104-N-25-FL | ✎ | 193.5 | - | 114 | 45 | 1/4 |
| MC238-N-25 | ✎ | 256.5 | 124 | - | 60 | 3/8 |
| MC238-N-25-FL | ✎ | 256.5 | - | 152 | 60 | 3/8 |
| MC202-N-25 | ✎ | 256.5 | 124 | - | 60 | 1/2 |
| MC202-N-25-FL | ✎ | 256.5 | - | 152 | 60 | 1/2 |

Assembly group PN

(see page 212 for descriptions)

Including gauge and bracket



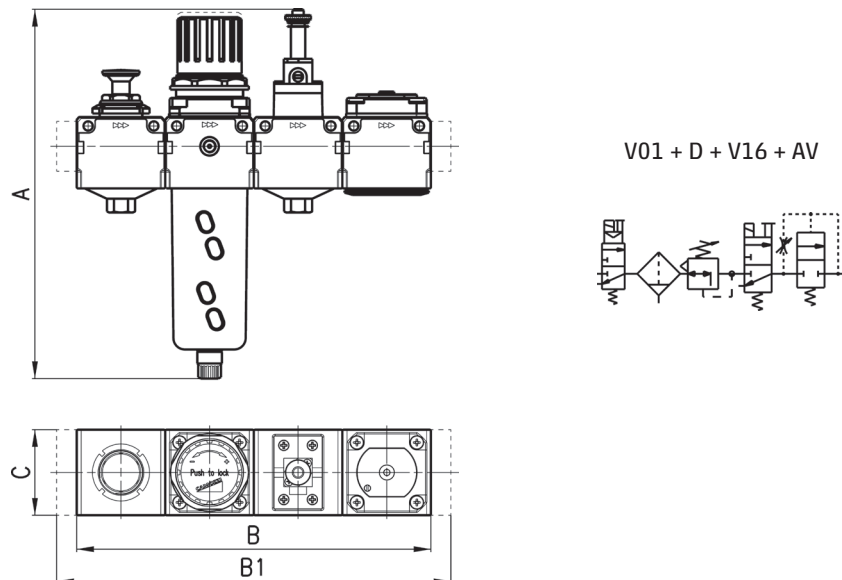
- ✓ Ex Stock
- ✎ UK Assembly
- ☎ Please Call Sales Office

| DIMENSIONS | | | | | | |
|----------------|--------------|-----|-----|-----|----|------------|
| Part Number | Availability | A | B | B1 | C | Connection |
| MC104-PN-25 | ☎ | 208 | 135 | - | 45 | 1/4 |
| MC104-PN-25-FL | ✎ | 208 | - | 159 | 45 | 1/4 |
| MC238-PN-25 | ✎ | 259 | 186 | - | 60 | 3/8 |
| MC238-PN-25-FL | ✎ | 259 | - | 214 | 60 | 3/8 |
| MC202-PN-25 | ✎ | 259 | 186 | - | 60 | 1/2 |
| MC202-PN-25-FL | ✎ | 259 | - | 214 | 60 | 1/2 |

Assembly group QN

(see page 212 for descriptions)

Including gauge and bracket



- ✓ Ex Stock
- ✎ UK Assembly
- ☎ Please Call Sales Office

| DIMENSIONS | | | | | | |
|-----------------|--------------|-----|-----|-----|----|------------|
| Part Number | Availability | A | B | B1 | C | Connection |
| MC104-QN-25 | ☎ | 208 | 180 | - | 45 | 1/4 |
| MC104-QN-25-FL | ✎ | 208 | - | 204 | 45 | 1/4 |
| MC238-QN-25 | ✎ | 259 | 248 | - | 60 | 3/8 |
| MC238-QN-25-FL | ✎ | 259 | - | 276 | 60 | 3/8 |
| MC202-QN-25 | ✎ | 259 | 248 | - | 60 | 1/2 |
| MC202-QN-225-FL | ✎ | 259 | - | 276 | 60 | 1/2 |

Please see page 216 for Series MC Accessories