



iCON-10W

10 Button Controller

With built in web UI programming interface

Contents

Overview	3
Features	3
Specifications	4
Front and Rear View	4
Installation	5
Programming	5
Reset to factory default.	6
Programming interface	7
Key Settings.....	7
Command Settings.....	10
Device Settings.....	11
Group Settings	12
Network Settings.....	13
Reset to factory default.	13
System Settings.....	14
Preconfiguration Services	15

Overview

The iCON-10W 10 button controller provides extremely easy programming via the built-in web UI programming interface. Control up to 10 devices through LAN and RS232. Macros allow up to six commands per button. The iCON-10W can be powered over PoE 802.3af, or with the included power adapter.



Features

- Easy programming with built in web UI programming interface.
- Controls up to 10 devices.
- Macro provides up to six commands (to any combination of devices) per button.
- PoE 802.3af power, or optional power adapter.
- Optional preprogramming services available when used with PureLink devices.
- Optional button labels, pre-configured, or custom.

Specifications

Technical	
Front panel	10 x Buttons(silicone soft buttons)
Back panel	1 x LAN (RJ45, PoE), 1 x RS232; 1 x DC 12V Power In
Operating Temperature	0°C to 45°C (32°F to 113°F)
Storage Temperature	-20°C to 70°C (-4°F to 158°F)
Humidity	10% to 90%, non-condensing
ESD Protection	Human-body Model, ±8kV (Air-gap discharge)/±4kV (Contact discharge)
Power Supply	DC 12V 0.5A (Power adapter optional)
Consumption (Max)	1.3W
Device Dimension (W x H x D)	45mm x 105.6mm x 36mm/ 1.77" x 4.16" x 1.42"
Product Weight	0.18kg/0.40lb

Front and Rear View



Installation

The iCON-10W can be powered from a network switch or PoE injector that satisfies the 802.3af PoE standard. Alternately, the iCON-10W also accepts 12 VDC power at the rear panel Phoenix connector with the supplied AC adapter.

The iCON-10W occupies a one gang box and is compatible with decora wallplates.

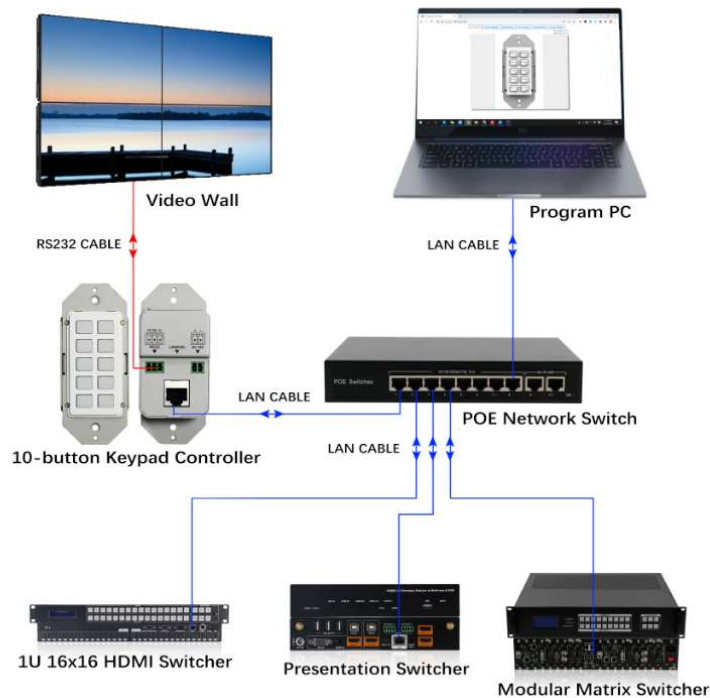
With a power draw of 1.3 watts, thermal performance is negligible at ~ 4.4 btu.

Programming

The [default address](#) of the iCON-10W is 192.168.1.254.

The keypad provides a built-in web UI to setup devices and configure commands, as well as configure network settings of the keypad and acquire system information. The web UI is accessible through browsers such as Chrome, Firefox, Safari, Opera, IE10+, etc.

Once the keypad is powered via Poe or local power adapter, connected to the network, and your programming laptop/tablet is in the same subnet and connected to the same network.



Using your device's browser, access the built-in web page of the iCON-10W.

A login form with two input fields. The first field is labeled with a person icon and contains the text "admin". The second field is labeled with a lock icon and contains six dots. Below the fields is a "Login" button.

Username 'admin'

Password 'admin'

Reset to factory default.

Press the two lowest buttons on the keypad until all of the button backlights blink 3 times.

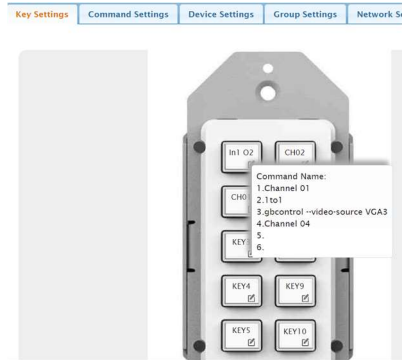
Programming interface

Key Settings

Prerequisite: Device settings and Command settings

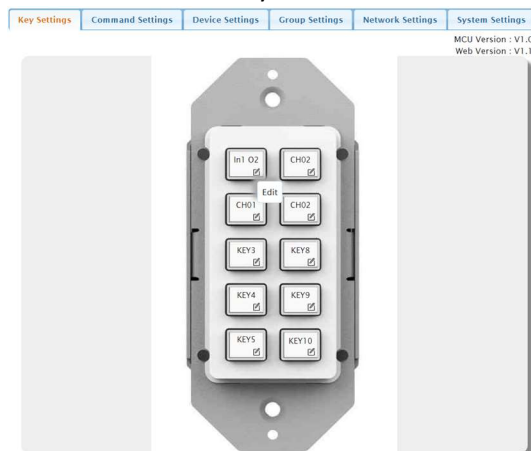
Displays graphical interface of front panel. Here you can:

- View commands assigned to each button when hovering over key:

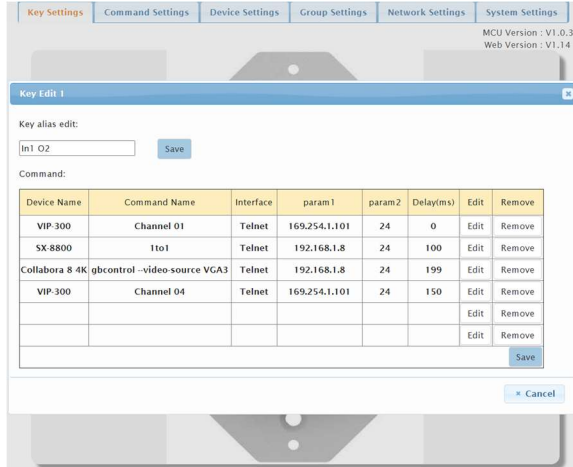


Assigning commands to a button

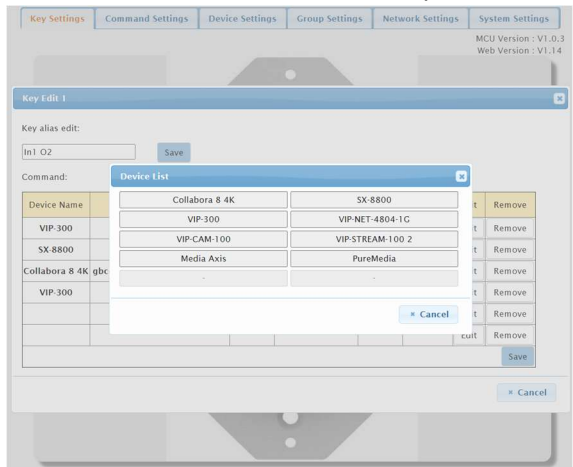
- Assign commands to the button, and change button name in web UI
 - Hover over the edit symbol and click



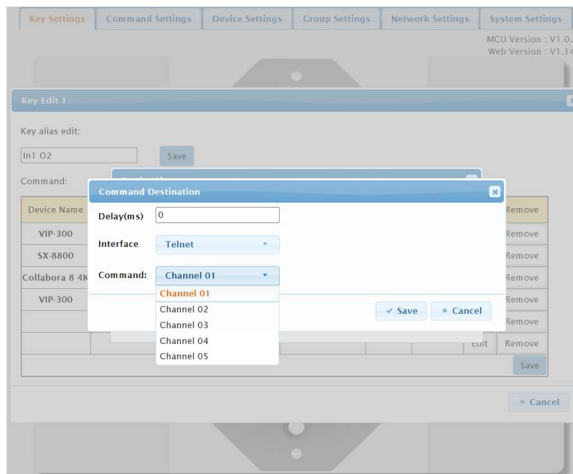
- A popup window will open for changing the button name in web UI and assigning commands that you have previously defined.



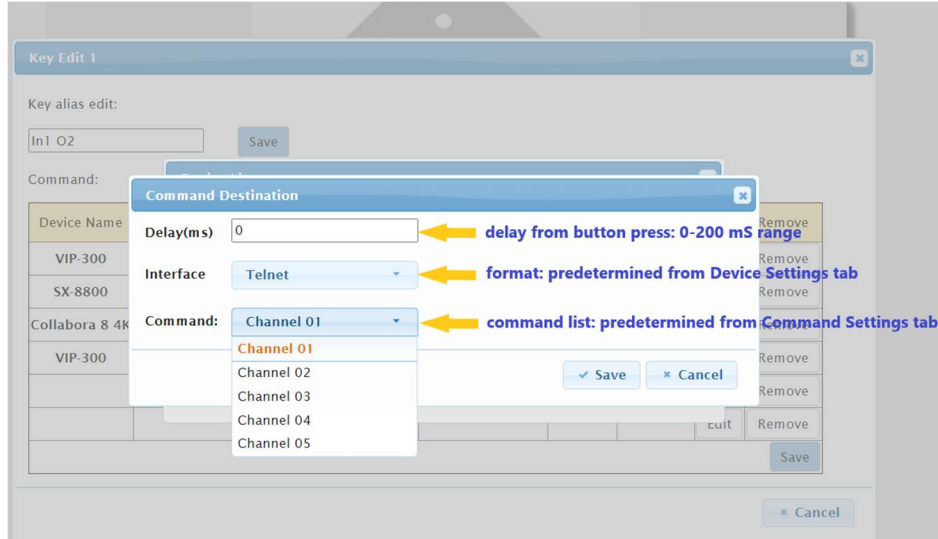
- To assign a command, you must first select the device you want to send the command to. Click the Edit button; this will open the Device List popup window.



- Select a device; this will open a popup window to select commands available for that device.



-

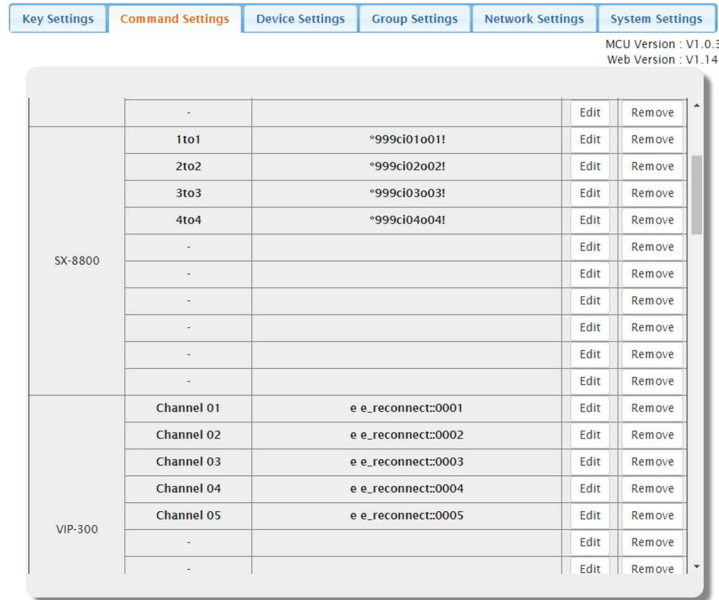


○

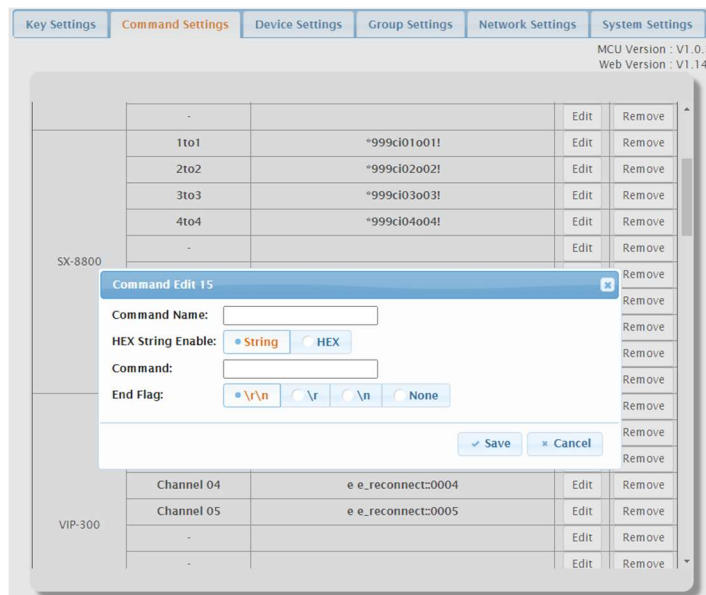
Command Settings

Prerequisite: Device Settings

This section allows you to enter up to 10 commands for a device. Keep in mind you can create a device more than once if you need more than 10 commands for that device.



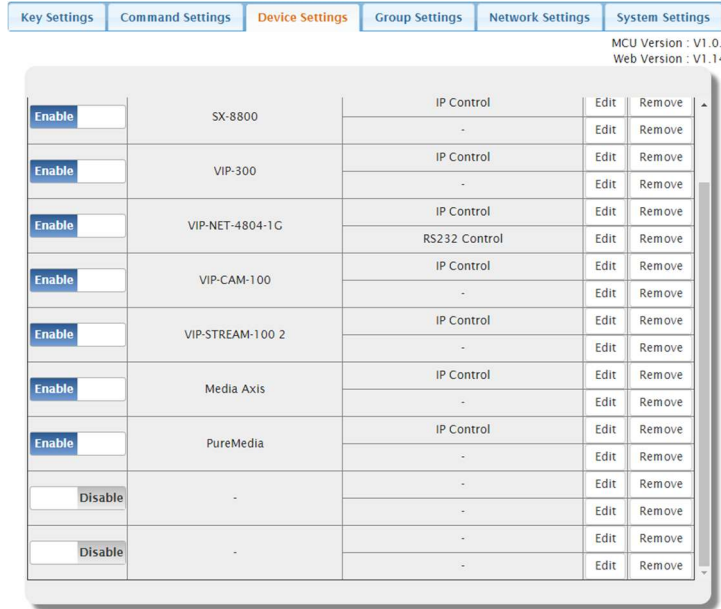
To add a command for a device, select the 'Edit' button where the fields are empty. A popup window will appear allowing you to enter the command syntax, and identify whether it is an ASCII or HEX style string.



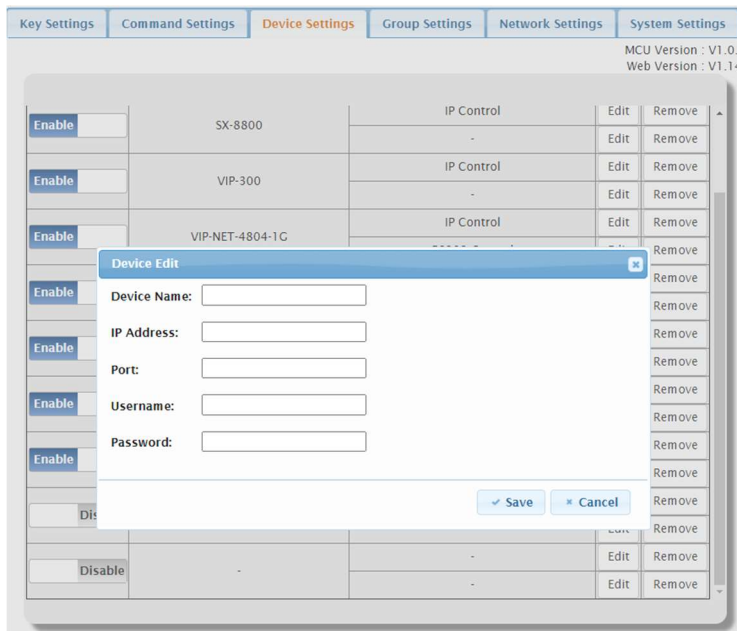
You may also provide a name for the command, and what set of delimiters if any are needed. Press Save to complete the process.

Device Settings

Allows you to enter up to ten controllable devices and set up their communication parameters.



To Add a device, select the 'Edit' button. A popup window will appear allowing you to enter the name of the device, and the communication parameters.



Once you have completed the settings for the device, press 'Save'.

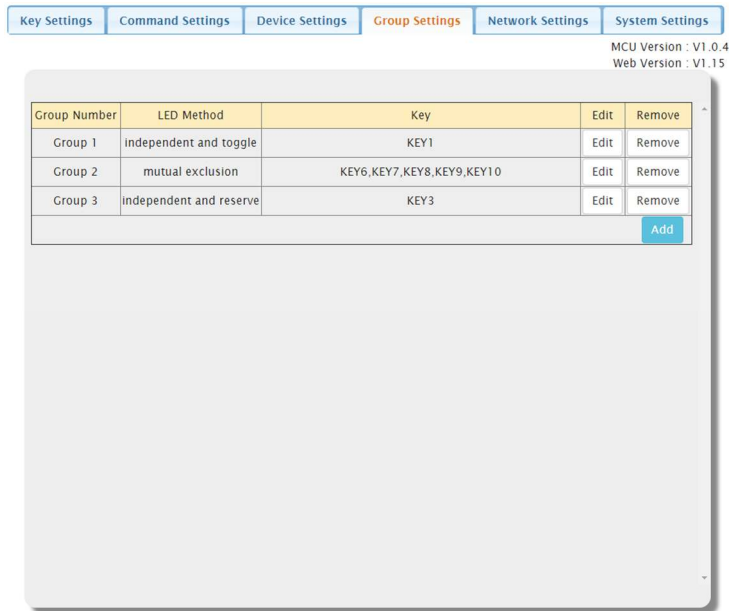
To remove a device, use the 'Remove' button.

Group Settings

This function allows you to set the behavior of button LEDs in groups and individually

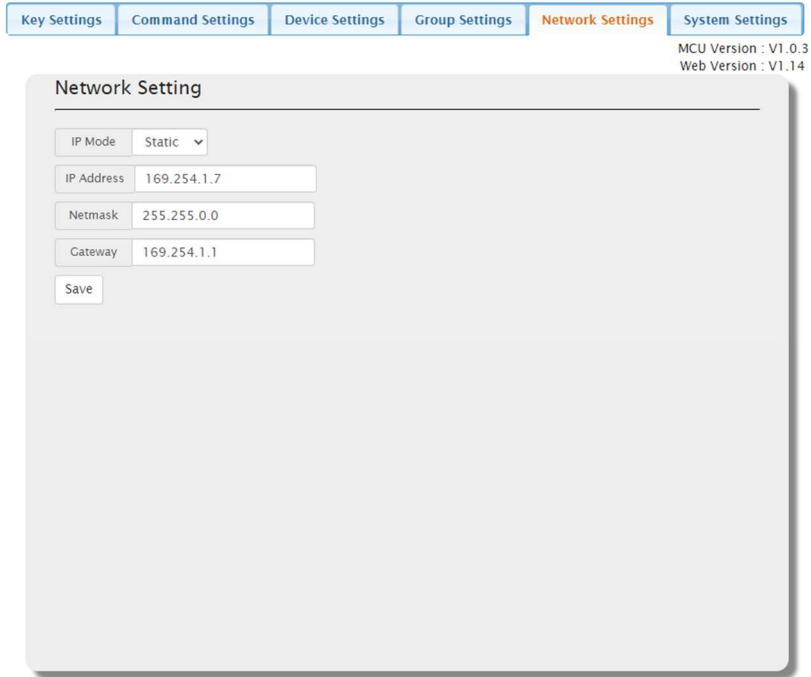
There are the LED behaviors:

- Independent/Reserve: default behavior. Works for individual buttons.
 - LED flashes twice with any button press
 - Note: as this is the default behavior, you do not have to assign buttons this functionality unless you want it clearly defined in the web UI.
- Independent/Toggle. Works for individual buttons.
 - LED flashes, then remains lit. Next button press, LED flashes then remains off. Cycle repeats.
- Mutual Exclusion. Works for groups of buttons.
 - Last button pressed within a group of buttons becomes the only one illuminated.



Network Settings

Allows settings of the network parameters for the iCON-10W.



The screenshot shows a web interface for configuring network settings. At the top, there are navigation tabs: Key Settings, Command Settings, Device Settings, Group Settings, Network Settings (highlighted in orange), and System Settings. Below the tabs, the version information is displayed: MCU Version : V1.0.3 and Web Version : V1.14. The main content area is titled "Network Setting" and contains the following fields:

- IP Mode: Static (dropdown menu)
- IP Address: 169.254.1.7
- Netmask: 255.255.0.0
- Gateway: 169.254.1.1
- Save button

Reset to factory default.

Press the two lowest buttons on the keypad until all of the button backlights blink 3 times.

Factory default network settings:

- IP Mode Static
- IP Address 192.168.1.254
- Netmask 255.255.255.0
- Gateway 192.168.1.1

System Settings

Allows settings of the following system parameters:

- Username and Password
- Language Setting
 - English or Chinese
- UI timeout
 - Between 5 to 60 minutes, in ten-minute increments.
- Configuration Download
 - Downloads as 'config.ini' file
- Configurations restore from file.
 - From 'config.ini' file type
- Reset to Factory Default
- Reboot device
- Upgrade web UI
- Upgrade MCU firmware

The screenshot shows the 'System Settings' page of a web interface. At the top, there is a navigation bar with tabs for 'Key Settings', 'Command Settings', 'Device Settings', 'Group Settings', 'Network Settings', and 'System Settings' (which is highlighted). Below the navigation bar, the 'System Setting' section is displayed. It includes the following fields and buttons:

- Username:** A text input field with the placeholder 'Username'.
- Old Password:** A text input field with the placeholder 'Old Password'.
- New Password:** A text input field with the placeholder 'New Password'.
- Confirm Password:** A text input field with the placeholder 'Confirm Password'.
- Save:** A blue button.
- Language Setting:** A dropdown menu currently set to 'English'.
- Web Login Timeout(Minutes):** A dropdown menu currently set to '60 min'.
- Download Current Configuration:** A blue 'Download' button.
- Restore Configuration:** Two blue buttons: 'Select a File' and 'Restore'.
- Reset to Default:** A blue 'Reset' button.
- Reboot the Unit:** A blue 'Reboot' button.
- Web Upgrade:** Two blue buttons: 'Select a File' and 'Upgrade'.
- MCU Upgrade:** Two blue buttons: 'Select a File' and 'Upgrade'.

On the right side of the page, the following version information is displayed:

MCU Version : V1.0.3
Web Version : V1.14

Preconfiguration Services

PureLink provides preconfiguration services for the iCON-10W when used with a PureLink product, such as Media Axis, PureMedia, PureStream, HDTools products, and more. Please contact sales@purelinkav.com or 201-488-3232, or try our Live Chat at www.purelinkav.com

For additional support, please contact support@purelinkav.com or 201-488-3232 or try our Live Chat at www.purelinkav.com

