

Limited Warranty

Images SI, Inc. warrants this product to the original retail purchaser to be free from defects in materials and workmanship for a period of 90 days of purchase. The Geiger Muller tube is very fragile and is not included in this warranty.

This warranty may be extended to a period of 1 year by registering the product on our website at:

<http://www.imagesco.com/reg.html>

Registration must occur within 30 days of delivery.

Images SI, Inc. will, at its own discretion, repair or replace the Geiger counter if it fails to operate properly within the warranty period provided that it has not been subjected to misuse, abuse, or neglect. Modification or repair by anyone other than Images SI, Inc. voids the warranty.

Repairs/Replacements will only be made when the customer properly packages and returns the unit to our facility with prior authorization.

Contamination of the Geiger counter with radioactive materials voids the warranty. Contaminated instruments will not be accepted for repair.

Images SI, Inc. will not be responsible for any incidental or consequential



Images Scientific Instruments, Inc.

sales@imagesco.com 800-230-4535

Phone: 718-966-3694 Fax: 718-966-3695

www.imagesco.com

GCA-07DL Series Geiger Counter

MANUAL & USER GUIDE



**NRC
Certification
Available**

Images Scientific Instruments Inc.

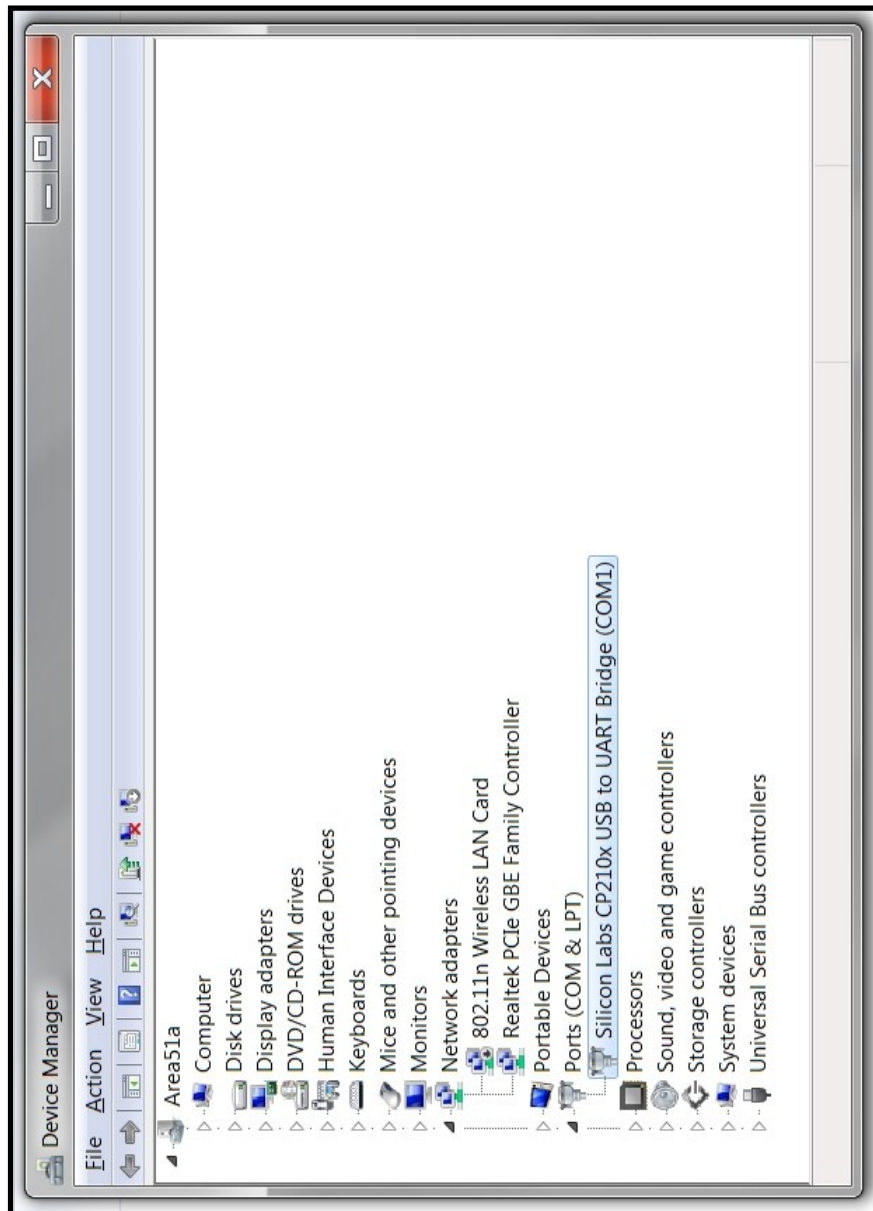
CONTENTS

1. Introduction	3
Features	4
Main Panel Controls	6
2. Operation	7
Survey Meter Modes	7
USB/TTL Adapter	9
Graphing Software	9
3. Data Logger Use	14
Using the Fast Download Feature in the Geiger Graphing Software	15
4. Geiger Counter and Radiation Basics	18
Radioactivity	18
Geiger Muller Tube	18
Count Rate Vs Dose Rate	19
Measurement of Radiation	20
How Much Radiation is Safe?	21
Checking for Radiation	22
Finding Radioactive Sources.....	24
Separating and Detecting Alpha, Beta & Gamma	25
NIST Calibration / NRC Certification and Why It's Important	26
5. Appendix	27
Setting Jumpers / Contrast Control	27
USB/TTL Serial Program Function	28
Trouble Shooting for USB/TTL Cable.....	29
Technical Specifications	31

Warranty

Digital Geiger Counter Technical Specifications

Radiation Detected	Alpha, Beta, X-Ray, and Gamma
Detector Type	Geiger Muller tube Ne + Halogen filled: Mica end window has a .38" effective diameter, with a density of 1.5-2.0 mg/cm ² Alpha above 3.0 MeV
Detector Sensitivity	Beta above 50 KeV Gamma above 7 KeV
Countable Pulse Resolution Range	1 Count Per Minute (CPM) - 5000 Counts Per Second (CPS)
Radiation Resolution & Range	1.0uR/hr - 1000 mR/hr .01uSv/hr - 10 mSv/hr



1. INTRODUCTION

The GCA-07W-DL uses an external wand that houses the Geiger Mueller tube.

Scientific Instrument & Industrial Tool

Our Digital Geiger counters have been calibrated and certified accurate in reading radiation levels to within 5% from background radiation to 1000 mR/hr. **NRC Certification** available at additional cost.

Perfect for schools and industry. In the laboratory the Digital Geiger Counter may be used to conduct nuclear experiments and measurements. Free Windows 7 graphing programs. Graphic Files may be exported to Excel spreadsheets.

Communication specifications are provided for users to read the output of the Geiger Counter and write their own programs.

Applications

- * Education - Classroom demonstrations and experiments
- * Emergency Services and Domestic Preparedness
- * HAZMAT and Compliance Verification
- * Dirty Bomb Screening and EMT's

Nuclear Experiments Online

Images Scientific Instruments publishes a number of nuclear experiments you can perform with you digital Geiger counter. Experiments are suitable for schools, teachers and students. Visit our website at:

http://www.imagesco.com/geiger/nuclear_experiments/experiment1.html



GCA-07W-DL

Features

Radiation Detected	Alpha, Beta, Gamma and X-Rays.
Detector	Geiger-Muller tube Ne + Halogen filled with a .38" effective diameter 1.5-2.0 mg/cm ² mica end window.
Detector Sensitivity	· Alpha above 3.0 MeV · Beta above 50 KeV · Gamma above 7 KeV
Countable Pulse Range	1 (CPM) - 10000 + counts per second (CPS)
Converted Radiation Range	.05 mR/hr - 1000 mR/hr (Imperial) .0005 mSv/hr - 10.0 mSv/hr (SI Metric)

The **Liquid Crystal Display (LCD)** is 16 character by 2 line that provides an easy to read output, see image to right. LCD has an on-off backlight switch . LCD display continuously updates counts per second (or counts per minute) on line one while displaying converted radiation level second line.

Backlight Switch turns on and off the LCD backlight.

The LED marked **Low Battery** will turn on when the battery power drops to approximately 7 Volts to alert the user to change battery. Readings taken when low battery indicator is on may not be accurate.

The LED marked **Pulse**—is a secondary radioactive particle indicator it blinks each time a radioactive particle is detected by the Geiger Counter.

The **Power Switch** turns power on or off to the GCA-07W-DL.

Trouble Shooting for USB/TTL Cable

Before trouble shooting the TTL USB Cable:

1. Be sure you have downloaded and installed the proper USB drivers to your computer to use the USB Cable. The required drivers for the Cable are available for downloaded at <http://www.imagesco.com/semiconductors/usb-3.5mm.html>
2. Check that you have selected the correct COM port in the Geiger Counter Program for the USB Cable. To see which COM port the USB cable is seen as do the following. Open the "Control Panel" on your computer. From the "Control Panel" open the "Device Manager". In the "Device Manager" select Ports as shown in the figure. In the picture you can see the USB is assigned to COM1. You can change the COM port assigned to the USB by double clicking on the USB listing. This will open another window where the assignment and communication speed may be changed. You can change the COM port assignment if you like but leave the communication speed at 9600 baud. The image on page 30 is of the Device Manager Screen for Windows PC.

The Geiger counter has been set up to use Images' 3.5mm TTL serial to USB Cable. The photograph on page 27 shows the jumpers in their default position.

If you use a different 3.5mm TTL Serial USB cable and the Geiger Counter is not sending the serial information to the PC, you may need to change the Serial Out jumper position. Remove the four screws from the back of the Geiger counter and remove the cover. Locate the Serial Out jumper and change the jumper position. Try Again.

To Change / Install Battery:

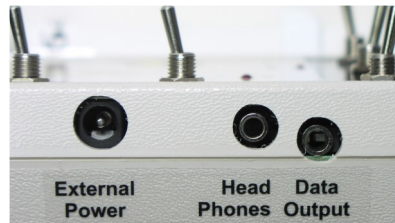
Battery compartment is located on the lower back of the Geiger Counter case.

Turn Geiger Counter off.

Slide battery compartment lid open. Attach 9 Volt battery to battery clip. Install 9 Volt battery into battery compartment. Slide cover back into place. It is important to note that when using the external power supply, there is no need for a 9V battery.

USB/TTL Serial Program Function

Install the Windows Geiger counter program on your computer. The digital Geiger counter has TTL serial output. It is labeled Data Output, as shown in the image below. Connect the Geiger counter to the computers serial port using the USB TTL serial cable. Make sure the serial/TTL jumper is set to serial, see “Setting the Back



Jumpers/Contrast Control” on page 27.

The digital Geiger counter outputs the Counts Per Second (CPS) to the computer.

The **Speaker Switch** turns the sound on or off to the internal speaker. The speaker is a secondary radioactive particle indicator. It clicks each time a radioactive particle is detected. Note: Plugging a headphone in the headphone jack will automatically turn off the internal speaker.

Headphone jack is a standard 3.5mm for private listening. Using a headphone automatically turns off the internal speaker of the Geiger counter.

External power jack is available for extended readings where battery operation may not be practical. Power jack is 2.5mm x 5.5mm. Power input is 9VDC or 9VAC @ 200mA min. current. **Mobile operation uses a 9V battery.**

TTL Serial output for PC available via 3.5MM stereo connector. Both the GCA-07 and GCA-07W output the counts per second.

The on-board **Data Logger** records and plays back Counts Per Second (CPS) data from the Geiger counter. The data logger will count the number of pulses received every second and output that number as a two byte serial number via its serial output. Pulse data is recorded and played back as a two byte serial number. The total CPS data is sent out as a two byte number (most significant byte first) with the following specifications:

- 9600 Baud, Inverted, 8 data bits, no parity and one stop bit.
- Count Per Second (CPS) = (High Byte * 256) + Low Byte
- EEPROM 65536 Bytes can record approx. 32,000 samples Over 8-hours of data

Main Panel Controls

The first panel switch starting from the left selects whether the radiation levels are shown in



Systems International (SI) metric (mSv/hr) or imperial (mR/hr) measurements.

The middle switch labeled CPS, AVG CPS and CPM selects one of the three Survey Meter Modes:



CPS (Counts Per Second) is a one second counting mode. Real time radiation readings and displays the count/second and equivalent radiation level in either mR/hr or mSv/hr.

AVG CPS is a three second average of the CPS. AVG CPS performs a smoothing function similar to analog meter readings. Displays the 3 Second CPS and equivalent



radiation level in either mR/hr or mSv/hr.

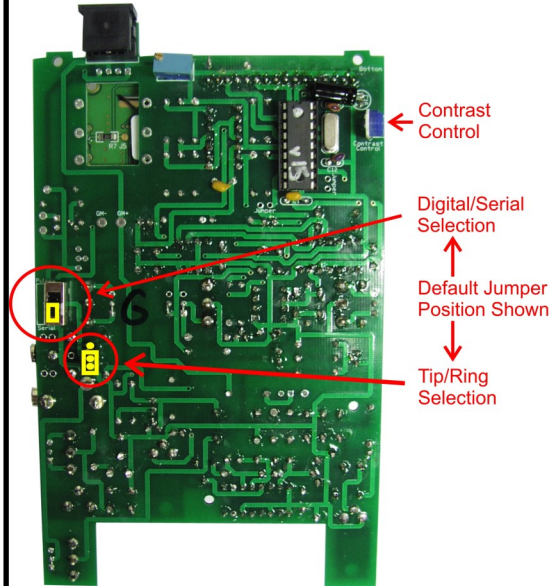


CPM (Counts Per Minute) is a one minute counting mode for measuring low levels of radioactivity and background radiation:

Displays accumulated count and equivalent background radiation in either uR/hr or

5. APPENDIX

Setting the Back Jumpers/ Contrast Control



If it becomes necessary to adjust contrast control or to set internal jumpers: Remove back cover of the GCA-07W-DL.

Contrast Control: The contrast control has been optimized for the best viewing of the LCD screen. However, it may be changed using a small Philips screwdriver to adjust the potentiometer shown in picture to left.

TTL Serial / TTL Pulse: The default setting is for the microcontroller to output serial data for the PC Graphing Program. In some experiments you may want the raw TTL pulses outputted for each radioactive particle detected. As one would need for a Gamma Ray telescope experiment, coincidence detectors, or random number generator.

Jumpers: To change Serial Output to TTL pulses (or vice versa,) set labeled jumper to TTL or Serial as shown in Picture to the left.

Tip/Ring Adjustment : If one is using a different USB to TTL Serial cabled adapter, it may be necessary to change the data output to the tip and ring of the stereo plug. Data output to the stereo 3.5 MM jack may be changed to Tip/Ring using labeled jumper shown in Picture to left.

NIST Calibration

We perform calibration of our digital Geiger counters with a Cs-137 source chart against a calibration standard using an NIST traceable Cs-137 source.

A Factory Calibration Certificate is provided with each unit.

Source number available upon request.

NRC Certification and Why It is Important

While many Geiger counter manufacturers claim high accuracy for their Geiger counter, it simply is not true. It is not enough to say an instrument is calibrated, nor is it enough to say the Geiger counter has an accuracy of 1%, 5%, 10%, or 20% because anyone can say that! Why? Without a legitimate reference to compare “claimed” accuracy too, a claim of accuracy is meaningless.

Fortunately, the United States Government has a license standard for Geiger counter accuracy. This is a Nuclear Regulatory Commission (NRC) certification for accuracy. NRC certification can only be performed by a nuclear laboratory licensed by the United States Government to perform such certifications. Without this certification, you cannot be sure of any claim that a Geiger counter accuracy is valid. Below is a picture of an NRC certification label for one of our Digital Geiger Counters. After NRC certification, a certification label is attached to the Geiger counter and this certification is valid for one full year.

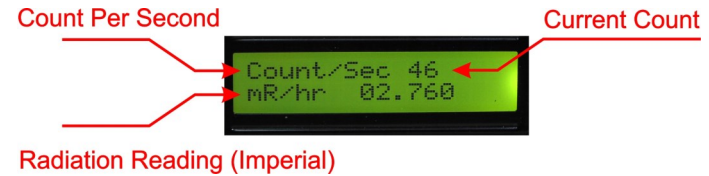
If a manufacturer states their Geiger counter is accurate, ask, "Is your Geiger Counter NRC certified?" If not, their Geiger counter probably cannot pass NRC certification. But many times a representative will hedge their answer and state that the NRC certification is expensive and is not "currently" offered as an option. Ask, "If I purchase your model and send the unit out for NRC certification will it pass? And if it fails NRC, can I return the Geiger counter for a refund?" Their answer will tell you what you need to know to make a sound purchasing decision.

Images SI, Inc. entire line of Digital Geiger counters are capable of receiving an NRC certification. This certification is available to our customers at an additional cost.

2. OPERATION

Survey Meter Modes

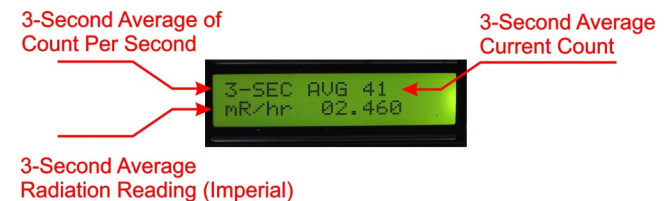
CPS Mode: Set the Conversion switch to mR/hr (milliroentgen/hour). The time function switch to “CPS”, Backlight switch on and the audio switch on. Turn on the Geiger counter. If you have a radioactive source bring the source close to the GM tube. For Geiger counters with an external wand, bring the wand close to the radioactive source.



Every radioactive particle detected will cause the Geiger counter to click and the LED to blink.

The LCD digital display in this mode updates the count and radiation level every second, see photo above. The display always shows the previous seconds count and radiation level. The count “Count/Sec” is the number of radioactive particles detected in the previous second. On the second line the equivalent radiation level of that count in mR/hr. You can change the Conversion switch to mSv/hr to read the radiation level in milli-sieverts/hour.

3-Second Average: The three second average of the CPS. AVG CPS performs a smoothing function similar to analog meter readings. Displays the 3 Second CPS and



equivalent radiation level in either mR/hr or mSv/hr.



CPM Mode

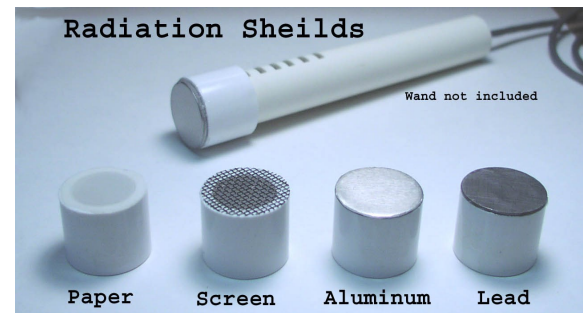
The CPM mode displays the counts per minute and convert the radiation level into micro-Roentgens (uR/hr) or micro-Sieverts (uSv/hr). The CPM modes is useful for checking background radiation. First set the switch to Metric or Imperial measurement. Next set the time function switch to CPM. The LCD display changes. The left side of the first line begins a count up to 60 seconds, increasing by 1 each second. The right hand side of the first line displays the number of radioactive particles detected.



At the end of the CPM count the Digital Geiger counter will display the total CPM and equivalent radiation level for one second before beginning another CPM counting cycle.

If you changed to the 1 minute time from 1 second the second line will display the radiation level last calculated from the previous mode. If the Geiger counter is turned on in the 1 minute mode the second line will display the word "Initializing" for the first 60 seconds.

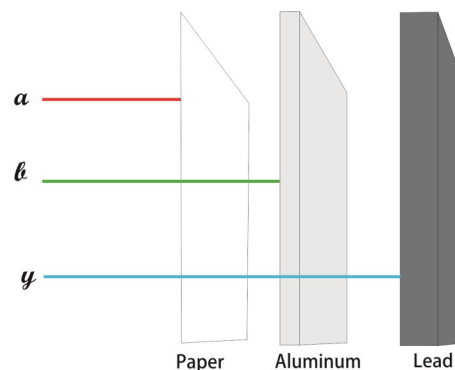
Separating & Detecting Alpha, Beta and Gamma



By placing shields of different materials in front of the GM tube we can filter out some radiation. For instance placing a paper shield in front of the GM tube will block all the Alpha radiation. The Geiger counter will now only detect beta and gamma radiations. If we place a thin metal shield in front of the GM tube that would effectively block the alpha and beta radiation, allowing the detection of only gamma radiation.

Radiation Shields for wand are available here:

<http://www.imagesco.com/geiger/shields.html>



Penetration Power of Radiation



Finding Radioactive Sources

The mantle in some Coleman lanterns are radioactive. Bring your Geiger counter to a local hardware store and check them out. Uranium ore from a mineral or a rock store should also emit sufficient radiation to trigger the counter.

A more reliable source is to purchase a radioactive source. Small amounts of radioactive materials are available for sale encased in 1 inch diameter by 1/4" thick plastic disks. The disks are available to the general public license exempt. This material outputs radiation in the micro-curie range and has been deemed by the Federal government as safe.

The cesium-137 is a good gamma ray source. The cesium 137 has a half-life of 30 years. Radioactive uranium ore and radioactive isotopes are available for purchase from Images Scientific Instruments.

<http://www.imagesco.com/geiger/radioactive-sources.html>

USB /TTL Cable Adapter

Serial data consisting of the CPS counts may be read by a Windows PC computer using a USB/TTL Serial Cable, included. USB TTL Serial Cable allow easy interfacing of the GCA-07W-DL via USB. The cable has a USB connector on one end that plugs into PC, and a 3.5mm stereo jack that plugs into the GCA-07W.

The required drivers for the Cable are available for downloaded at <http://www.imagesco.com/semiconductors/usb-3.5mm.html>



3.5mm audio jack output configuration:

- tip - TxD
- ring - RxD
- sleeve - GND

*See page 28 for changing data output to jack's Tip or Ring. Useful for using 3rd party TTL Serial/ USB cables.

Digital Geiger Counter Graphing Software

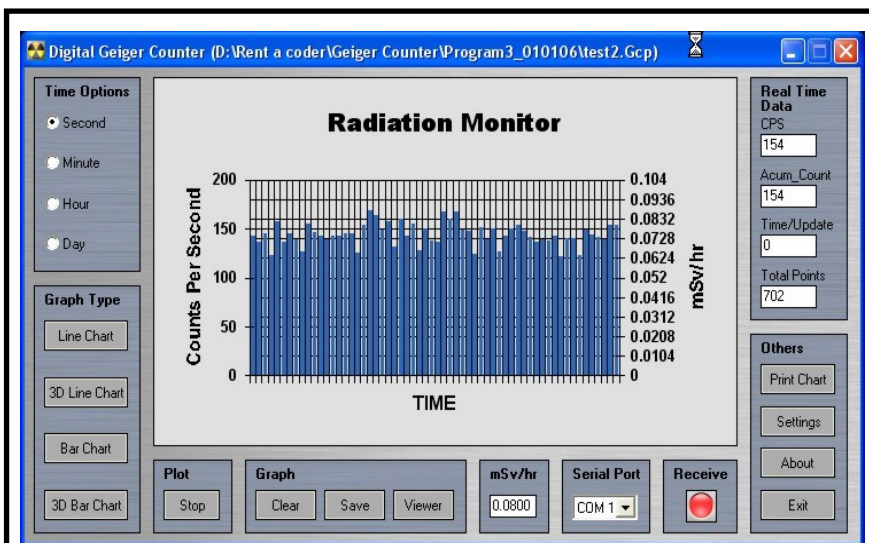
We offer a Windows PC program that reads this serial information for charting and recording the measured radiation over time (see screenshot below).

A free lite version of our Geiger graphing software can be downloaded at:

www.imagesco.com/geiger/geiger-graph.html

The Radiation Monitoring and Graphing software is useful for monitoring radiation. The software constantly monitors for the Counts Per Second (CPS) values and plots them on the Graph when connected to one of our Digital Geiger Counters. It calculates radiation levels from incoming serial data and plots them along with the CPS values. The software is capable of capturing values for different time units (i.e., Seconds, Minutes, Hours or Days).

The recorded data can be saved, and exported as a CSV delimited file for use in various other applications including Word & Excel. Data can be displayed as 1 of 4 types of



Installing the Software Package

Begin by installing the appropriate drivers for the USB/TTL cable included with the purchase of the software program and/or cable. These drivers may also be downloaded from the Images website at: <http://www.imagesco.com/semiconductors/usb-3.5mm.html>

Once the drivers are installed, restart your computer and then plug the cable into an available USB port.

Now install the Windows Geiger counter program on your computer. The digital Geiger counter has TTL serial output. Connect the Geiger counter to the computers

Checking for Radiation

Our line of Digital Geiger Counters are extremely sensitive and will detect and measure background radiation in addition to detecting and measuring radioactivity above background radiation. To test for small increases in radioactivity that may be present in food and other materials to cause an increase in the background radiation one must first establish the background radiation level.

To obtain your normal background radiation reading take an hour's worth (60) of one minute readings. This is the CPM (counts per minute) mode on the GCA-07W. With this data collected. I would add the 60 readings together. I would then take that total and divide it by 60 to get an average CPM reading. Next I would look through the 60 CPM readings and mark down the highest count CPM reading, and the lowest count CPM reading. Those two CPM numbers are your Max and Min.

With this information, you can determine if the background CPM radiation reading(s) are greater than your MAX CPM number. If the readings are consistently greater, you can make a logical assumption that there is an increase in background radiation.

To see the percentage increase you would subtract the average CPM number from your reading to see what the increase in radiation is on average.

To increase accuracy, you could also average say five hours worth of data or 300 one minute CPM samples to obtain the average CPM, Min CPM and Max CPM. In general the greater the number of samples the greater the level of confidence. The CPM averages may be different for day and night, so you may also want to collect background radiation data for time variances.

The optional Geiger Counter Graphing Software for Windows PC (see page 10), also available on Amazon, ASIN: B00WAK68U4, will allow you to collect, monitor and save this data from the GCA-07W-DL easily.

To run a test, position the probe (or Geiger counter) very close to the top surface of the material you are testing, and run the counter in its CPM mode to check for radiation above your established background radiation.

Finding Consistency in Readings

mrem above background radiation is the limit set per year.

Let's extrapolate the 100 mrem number to an hourly radiation exposure rate. There are 365 days/yr x 24 hr/day equals 8760 hours. Divide 100 mrem by 8760 hours equals .0114 mrem/hr or 11.4/hr microrem. This is an extremely low radiation level. The background radiation in my lab hovers around 32 uR/hr. Am I in trouble? No. Typically background radiation in the United States averages 300 mrem/yr, or 34 microrem/hr. The NRC specifications is for radiation above this 34 urem/hr background radiation.

Notice that my lab readings are in microrad (uR/hr) and the exposure limit is given in microrem (urem/hr). I do not know what type of radiation (a, b or gamma) the Geiger counter

Exposure Source	Dose (conventional)	Dose (SI)
Flight from LA to NY	1.5 mrem	.015 mSv
Dental X-ray	9 mrem	.09 mSv
Chest X-ray	10 mrem	0.1 mSv
Mammogram	70 mrem	0.7 mSv
Background Radiation	620 mrem/year	6.2 mSv/year

is reading in my lab at any particular instant, so I do not know the Q factor of the radiation and therefore can not calculate the mrem. However for general purposes I consider them the one and the same. Remember, the digital Geiger counters are calibrated using a Cs-137 radioactive source. Therefore the highest accuracy in reading radiation levels will be from Cs-137 sources.

Common Radiation Exposure (General Population)

Background radiation consists of three sources; **Cosmic** radiation from the sun and stars. **Terrestrial** radiation from low levels of uranium, thorium, and their decay products in the soil, air and water. **Internal** radiation from radioactive potassium-40, carbon-14, lead-210, and other isotopes found inside our bodies.

Because of the randomness of radioactivity, background radiation can vary from minute to minute and place to place. In my corner of the world I have a background radiation that triggers the counter 22-34 times a minute.

serial port using the USB TTL serial cable. Make sure the serial/TTL jumper is set to serial, see "Setting the Back Jumpers/Contrast Control" in the Appendix.

When opening the application, make sure the program's COM port is set to the correct COM port where the USB cable and Geiger counter has been connected. A troubleshooting guide for the com port is also included in the Appendix.

The Geiger counter must be on and connected to the computer for the program to begin graphing. To begin graphing simply click "Start" in the lower left hand corner of the main interface screen.

The main program interface is comprised of the following components:

- The **main graph** on which the values will be plotted.
- **Time options frame.** This allows user to select different time units (Second, Minute, Hour, Day) For example, if you set the time unit to Second, then the program will count the radiation levels per second, and plot. If you set it to Minute, the program will count radiation levels per minute, and plot.
- **Graph type frame.** This allows user to switch between different views of graph (Line Chart, 3D Line Chart, Bar Chart and 3D Bar Chart).
- **Plot frame.** This comprises of the Start button which starts the capturing and plotting process. When capturing is in progress, the same button will act as a Stop button, which stops capturing and plotting process.
- **Graph frame.** This comprises of a Clear button which clears the graph, a Save button which saves values to the active file, a Save As button which allows to select a different file for saving, and Viewer button which launches the Viewer.
- **mR/hr frame.** This comprises of a textbox which displays current radiation level.
- **Serial Port frame.** This comprises of a combo box which allows com port selection.

- **Status frame.** This comprises of an LED which displays the status of the program. The status LED changes according to the activity. When no capturing is in progress, the LED will be Off and status will be Stopped. When the program is receiving values, the LED will be Blue and status will be Receive. When program is writing the values, the LED will be Green and status will be Write.
- **Real Time Data frame.** This frame displays various real time values such as Counts Per Second (CPS), total accumulated count (if the program is running on modes other than Second), time left before next update, and total number of points captured.
- **Others frame.** This comprises of a Print Chart button which allows to prints the current plot, a Settings button which opens the Settings dialog, an About button which displays the information about the program, and an Exit button which quits the program.

The image on the facing page outlines where each frame is located and shows data being displayed as a line graph. The image on the previous page shows the data in a bar graph.

Writing Your Own Interface Software

It is possible to write your own software to read the data from the digital Geiger counter. The data is outputted from a 3.5 MM stereo jack, as shown on previous page. The +5V serial data is sent out as a two byte number (most significant byte first) with the following specifications: 9600 Baud, Inverted, 8 data bits, no parity and one stop bit.

The Serial Data Output is a two byte (8-bit) number every second that represents the previous count per second. High byte is followed by the low byte. Communication parameters are: 9600 Baud, Inverted, 8 data bits, no parity and one stop bit. These parameters are for anyone wishing to read the data from the Digital Geiger counter.

biological effect, the dosage is multiplied by a "quality factor" (Q). For example, a person receiving a dosage of gamma radiation will suffer much less damage than a person receiving the same dosage from alpha particles, by a factor of three. So alpha particles will cause three times more damage than gamma rays. Therefore, alpha radiation has a quality factor of three. Following is the Q factor for a few radiation types.

The difference between the rad and rem is that the rad is a measurement of the radiation absorbed by the material or tissue. The rem is a measurement of the biological effect of that absorbed radiation.

For general purposes most physicists agree that the Roentgen, Rad and Rem may be considered equivalent.

System	1 Sv = 100 rem	1 rem = .01 Sv	International (SI)
	1 mSv = 100 mR (mrem)	1 mR = .01 mSv	
The System of unit	1 Gy = 100 rad	1 rad = .01 Gy	International for radiation measurements is
	1mGy = 100 mrad	1 mrad = .01 mGy	

now the official system of measurements. This system uses the "gray" (Gy) and "sivert" (Sv) for absorbed dose and equivalent dose respectively.

The conversion from one system to another is simple:

How Much Radiation is Safe?

In the United States, the U.S. Nuclear Regulatory Commission (NRC) determines what radiation exposure level is considered safe. Occupational exposure for worker is limited to 5000 mrem per year. For the general population, the exposure is 500 mrem above background radiation in any one year. However for long term, multi-year exposure, 100

state making it ready to detect radioactivity.

Count Rate vs Dose Rate

Each output pulse from the GM tube is a count. The counts per second give an approximation of the strength of the radiation field. Above is the GM tube used in the GCA-07W-DL's response to a cesium-137 source.

Measurement of Radiation

There are a few scales that one can use to measure radiation. Depending upon your application, one scale may be better than the others.

Radiation Measurements

Roentgen: Is the measurement of energy produced by Gamma or X-Ray radiation in a cubic centimeter of air. It is abbreviated with the capital "R". One milliroentgen, abbreviated "mR" is one-thousandth of a roentgen. One microroentgen, abbreviated "uR" is one-millionth of a roentgen.

RAD: Radiation Absorbed Dose. Original measuring unit for expressing the absorption of all types of ionizing radiation (alpha, beta, gamma, neutrons, etc) into any medium. One rad is equivalent to the absorption of 100 ergs of energy per gram of absorbing tissue.

REM: Roentgen Equivalent Man is a measurement that correlates the dose of any radiation to the biological effect of that radiation. Since not all radiation has the same

Radiation:	Quality Factor (Q)
Beta, Gamma and X-rays	1
Thermal Neutrons	3
Fast n, a, and protons	10
Heavy and recoil nuclei	20

The screenshot shows the 'Digital Geiger Counter - Radiation Monitor' software interface. It features a central graph titled 'Digital Geiger Counter - Radiation Monitor' with 'Counts Per Second' on the y-axis (0 to 800) and 'TIME' on the x-axis. The graph displays a fluctuating blue line representing radiation levels. Surrounding the graph are several control panels:

- Top Left:** 'Real Time Data' panel with fields for CFS (33), Accum_Count (33), Previous Count (33), Time/Update (0), and Total Points (52).
- Top Right:** 'Others' panel with buttons for Tools, Settings, and Exit.
- Bottom Left:** 'Time Options' panel with radio buttons for Second (selected), Minute, Hour, and Day.
- Bottom Center-Left:** 'Graph Type' panel with buttons for Line Chart, 3D Line Chart, Bar Chart, and 3D Bar Chart.
- Bottom Center-Right:** 'Plot' panel with buttons for Start, Clear, Save, Save As, and Viewer.
- Bottom Right:** 'mR/hr' panel with a display showing 1.98 and a 'Stopped' button.
- Far Right:** 'Serial Port' dropdown menu set to COM7.

Red arrows point from descriptive labels to these various interface elements:

- Real time values:** Points to the 'Real Time Data' panel.
- Main graph on which values are plotted:** Points to the central graph area.
- Various Time Options:** Points to the 'Time Options' panel.
- Graph Type selection:** Points to the 'Graph Type' panel.
- Plot Start/Stop Button:** Points to the 'Start' button in the 'Plot' panel.
- Various graph functions:** Points to the 'Clear', 'Save', 'Save As', and 'Viewer' buttons.
- Radiation Level Indicator:** Points to the 'mR/hr' display.
- Active COM Port Selection:** Points to the 'Serial Port' dropdown.
- Status Indicator:** Points to the 'Stopped' button.
- Other Software Functions:** Points to the 'Tools', 'Settings', and 'Exit' buttons.

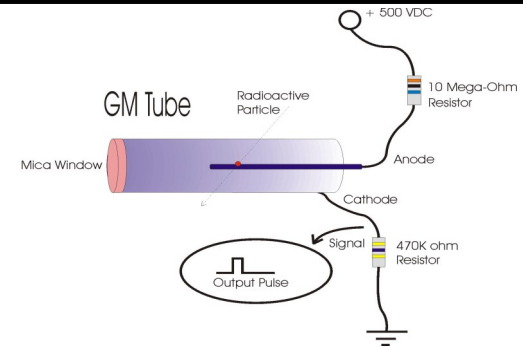
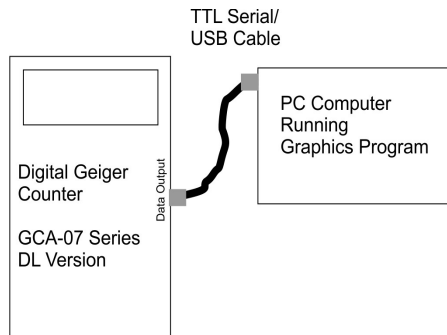
3. DATA LOGGER USE

The on-board datalogger of the GCA-07W-DL consists of 2 push buttons (one red and one black) and 2 LEDs (red and green), as shown in the image below.



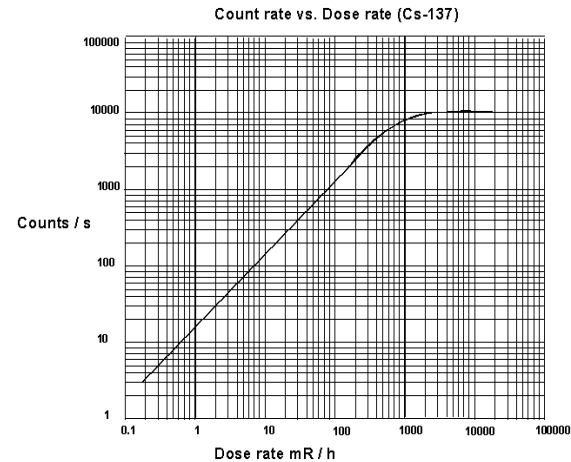
The Data Logger may be used at any time to record data. It does not need to be connected to a PC. Connect the Geiger counter to PC when ready to playback data. The Geiger counter must be connected to the PC with software open in order for playback to occur. The LCD display of the Geiger counter will continue to show real-time data during playback. Recorded data is displayed in the Graphing software on PC.

The data output of the Geiger counter is connected to a Windows PC running Images' Geiger counter software by way of the 3.5mm TTL serial/ USB cable. The cable is plugged into a free USB port of the PC Computer. The image to the right illustrates the



In the initial state the GM tube has a very high resistance. When a particle passes through the GM tube, it ionizes the gas molecules in its path. This is analogous to the vapor trail left in a cloud chamber by a particle. In the GM tube, the electron liberated from the atom by the radioactive particle and the positive ionized atom both move rapidly towards the high potential electrodes of the GM tube. In doing so they collide with and ionize other gas atoms. This creates a small conduction path allowing a momentary surge of electric current to pass through the tube.

This momentary pulse of current appears as a small voltage pulse across R2. The halogen gas quenches the ionization and returns the GM tube to its high resistance



4. GEIGER COUNTER AND RADIATION BASICS

Radioactivity

Radioactivity is the spontaneous emission of energy from the nucleus of certain elements, most notably uranium. There are three forms of energy associated with radioactivity; alpha, beta and gamma radiation. The classifications were originally made according to the penetrating power of the radiation.

Alpha rays were found to be the nuclei of helium atoms, two protons and two neutrons bound together. Alpha rays have a net positive charge. Alpha particles have weak penetrating ability; a couple of inches of air or a few sheets of paper can effectively block them.

Beta rays were found to be electrons, identical to the electrons found in atoms. Beta rays have a net negative charge. Beta rays have a greater penetrating power than Alpha rays and can penetrate 3mm of aluminum.

Gamma rays are high-energy photons. This has the greatest penetrating power being able to pass through several centimeters of lead and still be detected on the other side. Images Digital Geiger Counters are sensitive to all three types of radioactivity.

The Geiger Mueller Tube

Geiger Mueller tubes are simple devices that detect and measure radioactivity. The original design by H. Geiger and E.W. Mueller in 1928 hasn't change very much. The basic sensor functioning remain the same.

A cutaway drawing of the tube is shown on the facing page. The wall of the GM tube is a thin metal cylinder (cathode) surrounding a center electrode (anode). It is constructed with a thin Mica window on the front end. The thin mica window allows the passage and detection of alpha particles. The tube is evacuated and filled with Neon, Argon plus Halogen gas.

It is interesting to see how the GM tube detects radioactivity. A 500-volt potential is applied to the anode (center electrode) through a ten mega-ohm current limiting resistor. To the cathode of the tube a 460-k ohm resistor is connected.

connect of the Geiger counter to PC.

The Geiger counter sends all its serial data to the PC program once you have clicked start in the program itself. In this configuration you can monitor the real time output of the Geiger counter using the software, record the data, or playback the recorded data.

Record Data: Press the **Log** button. Pressing this button starts logging the data (either from 0th memory location if memory is erased or from the end of last logging). The Log LED will light signaling the Data Logger is recording. Pressing the **Log** button again stops logging. The Log LED will turn off.

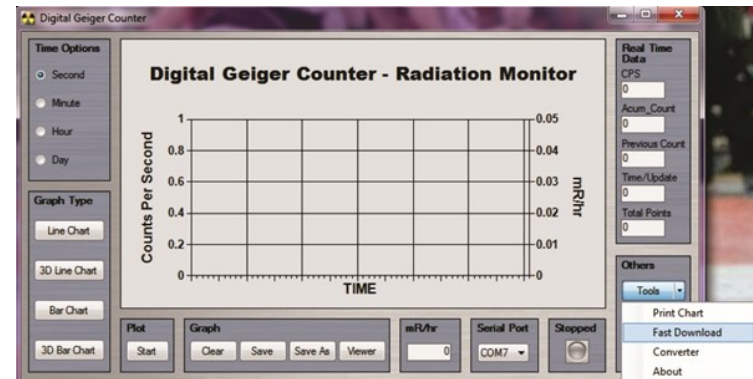
Erase Data:

Press and hold the **Playback** button until Playback LED starts to blink (hold approximately for 2 seconds). This signals that the memory is erased. Once LED blinks, the data is erased and you can remove your finger from pressing Playback button.

Using the Fast Download Feature in the Geiger Graphing Software:

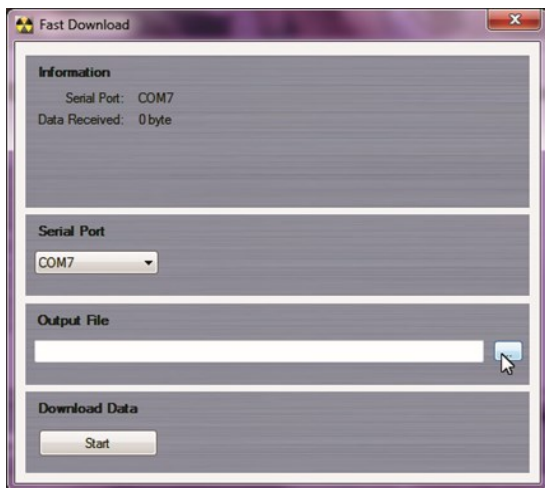
This unit is equipped to download the recorded data to pc at 9600 baud. The download takes only a few seconds.

To do so, open the Geiger Graphing software and connect the Geiger counter by way of the USB to TTL cable. Turn the unit on.



From the software, open the Tools drop-down menu on the lower right side of the screen, and select Fast Download.

Enter the title you would like to save the output file under. The file location can be

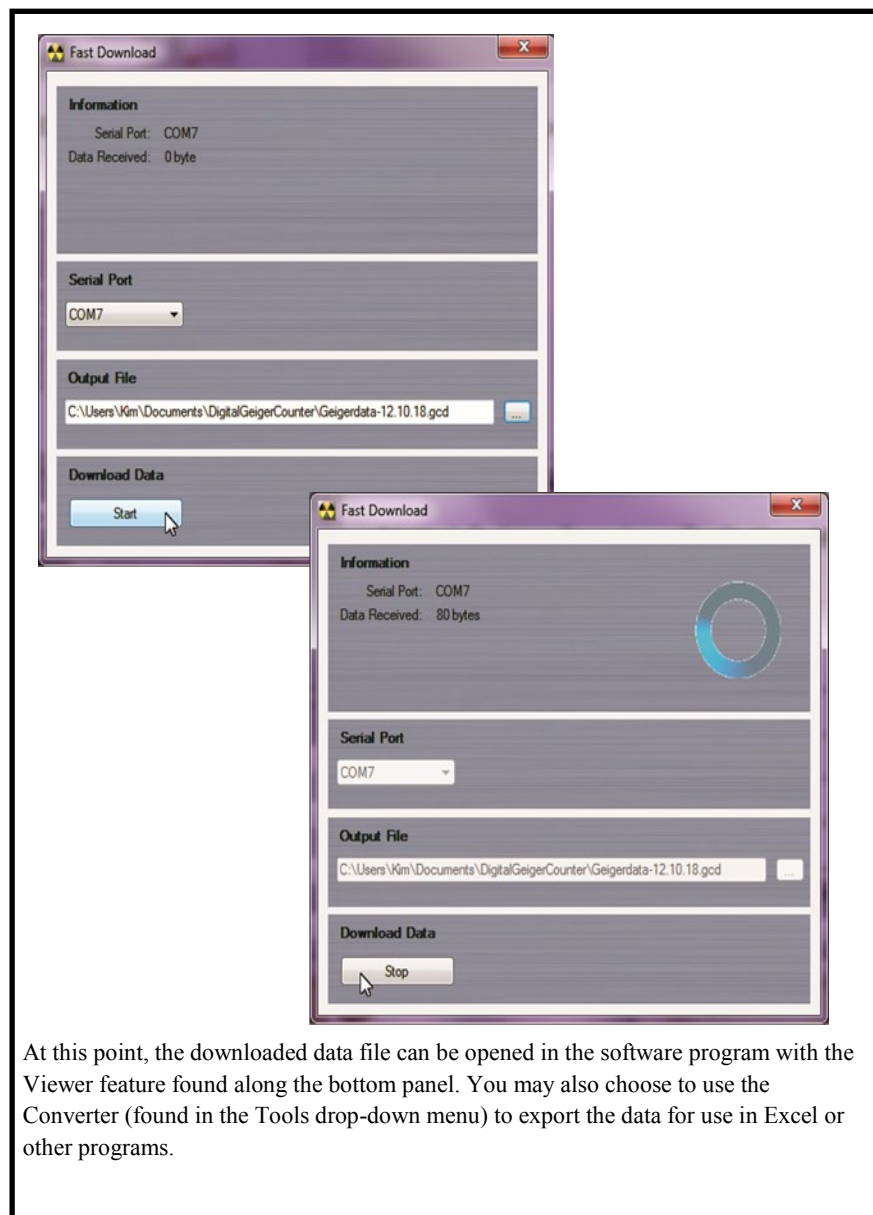


changed by clicking the button with the 3 dots to the right of the output file window. Save the file.

Next click the Start button at the bottom of the screen as shown in the image on the next page. Press the Playback button on the Geiger Counter. Both the Playback LED and LOG LED will light for 3 seconds before playback actually begins. Once download begins, only the Playback LED will remain lit. When the download has finished, both the Log and Playback LED's will light for two seconds signaling the end of the playback data. When this occurs, click stop on the PC screen to close the open file.*

*** At the end of playback data, you need to close the open file while the log and playback LED's are both lit. If not, after the two seconds, real time data will be written to the open file.**

You may now close the window.



At this point, the downloaded data file can be opened in the software program with the Viewer feature found along the bottom panel. You may also choose to use the Converter (found in the Tools drop-down menu) to export the data for use in Excel or other programs.