

VORTEX Cameras

By VIVOTEK

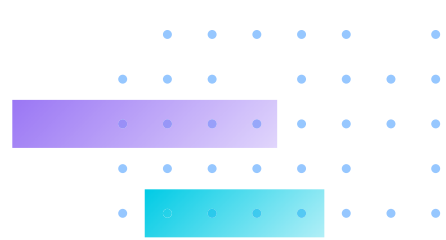
Key Features

- Essential and Premium series
- From 2 MP up to 12 MP resolution
- Crystal clear image quality
- Easy to install, with zero configuration
- Embedded AI analytics
- Onboard storage for up to 30 days
- Weather-proof and vandal-proof
- Subtle designs
- NDAA compliance

Overview

Award winning VORTEX network cameras are designed to work 24/7 for all surveillance requirements. Our camera portfolio offers a variety of form factors - domes, bullets, turret, and 360° fisheyes - providing a wide range of views from overviews to zoom for close-ups. Cloud-based features include hassle-free installation, zero-configuration, and automatic firmware updates, providing customers with a more convenient and streamlined user experience. Onboard AI analytics and storage enable accurate detection in real-time as well as recording objects of interest. Equipped with Smart IR, WDR, and advanced noise reduction technology, VORTEX cameras capture crystal clear video imagery at all times of day and night.





Key Features

Wide Camera Selection

- Many variations for all situations
- From 2 MP up to 12 MP resolution
- Domes, bullets, turret, and 360° fisheyes

Crystal Clear Image Quality

- Smart IR enabled cameras for uniform, consistent night visibility
- WDR for improved images in high contrast lighting
- Advanced Noise Reduction

Hassle-Free, Zero Configuration

- QR codes for easy setup
- Automatic firmware updates

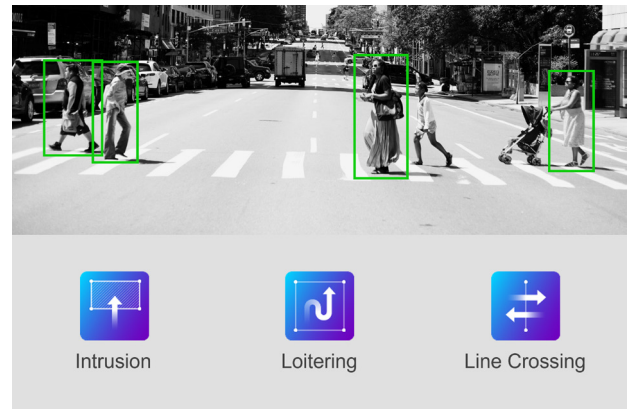
Onboard AI Analytics and Storage

- Intrusion, line-crossing, and loitering detection of people and vehicles
- Pre-installed SD card storage for up to 30 days recording
- Real-time notifications



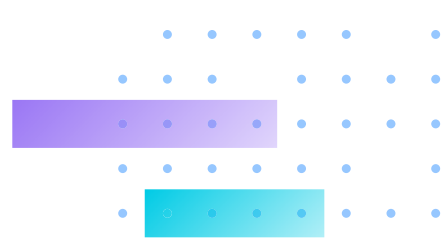
Comprehensive Security Protection

- End-to-end encryption
- Video encryption
- HTTPS transmission from camera to the cloud



Trustworthy and Reliable

- IP66 / IK10 proof cameras for harsh environments
- 20+ years experience in IP surveillance



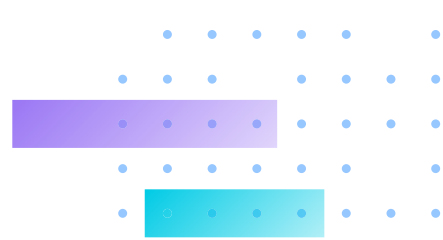
VORTEX Camera Lineup and Video Analytics

VORTEX offers 2 series of cameras: Essential and Premium series.

Both Essential and Premium series VORTEX cameras are AI cameras with edge AI capabilities. Premium series cameras offer extended video analytics features.

| Series | Model | Resolution | Indoor/Outdoor | Type | Lens |
|-----------|------------|------------|----------------|---------|-------|
| Essential | FD639 | 2MP | Outdoor | Dome | Fixed |
| | IB639 | 2MP | Outdoor | Bullet | Fixed |
| | FD819-H | 5MP | Indoor | Dome | Fixed |
| | FD839-EHV | 5MP | Outdoor | Dome | Fixed |
| | IB839-EH | 5MP | Outdoor | Bullet | Fixed |
| | IT839-H | 5MP | Outdoor | Turret | Fixed |
| | FD819-HT | 5MP | Indoor | Dome | Zoom |
| | FD839-EHTV | 5MP | Outdoor | Dome | Zoom |
| | IB839-EHT | 5MP | Outdoor | Bullet | Zoom |
| Premium | FD837-HTV | 5MP | Outdoor | Dome | Zoom |
| | IB837-HT | 5MP | Outdoor | Bullet | Zoom |
| | FE912-H | 12MP | Recessed | Fisheye | Fixed |
| | FE931-EHV | 12MP | Outdoor | Fisheye | Fixed |

| | | Essential | Premium |
|-----------------------------------|--|---|--|
| Live Event Detection | Object for detection | People | People and Vehicles |
| | Rules | Line Crossing Detection, Intrusion Detection, Loitering Detection | Line Crossing Detection, Intrusion Detection, Loitering Detection |
| Deep Search | Object for search | People or Vehicles | People or Vehicles |
| | Scene Search (Filter by rule) | Line Crossing, Intrusion, Loitering | Line Crossing, Intrusion, Loitering |
| | Attribute Search (Filter by appearances) | - | People Attributes: Gender / Age group / Upper body cloth color / Lower body cloth color / Accessories – Backpack and Hat |
| | | | Vehicle Attributes: Vehicle type / Color |
| Re-Search (Person locator search) | - | Person Re-identification | |



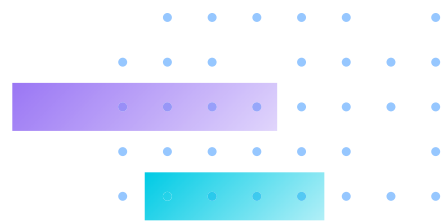
Dome and Turret

Technical Specifications



| | FD639 | FD819-H | IT839-H | FD839-EHV | FD819-HT | FD839-EHTV | FD837-HTV |
|-----------------------|---|-----------------------------------|----------------------------|--|----------------------------|--|---|
| Series | Essential | | | | | | Premium |
| Resolution | 2MP | 5MP | | | | | |
| Image Sensor | 1/3.1" CMOS | 1/2.7" CMOS | | | | | 1/2.8" CMOS |
| Lens Type | Fixed | | | | Zoom | | Zoom |
| Focal Length | f = 2.8 mm | | | | f = 2.8~10 mm | | F = 2.7~13.5 mm |
| F-number | F2.0 | | | | F1.8~F2.74 | | F1.4~F2.8 |
| Field of View | 116° (H)/ 165° (V)/ 140° (D) | 103° (H)/ 76° (V)/ 134° (D) | | 95°~41° (H)/ 69°~31° (V)/ 127°~51° (D) | | 97°~27° (H)/ 70°~20° (V)/ 131°~34° (D) | |
| IR Illuminators | 30m | | | | | | |
| Audio | One-way | | | | | | Two-way |
| Pre-installed SD Card | 128 GB | 256 GB | | | | | |
| Indoor/Outdoor | IP66/IK10 | Indoor | IP66/IK10 | | Indoor | IP66/IK10 | |
| Dimensions | Ø110 x 85 mm | Ø 130 x 95 mm | Ø 122 x 99 mm | Ø 129 x 94 mm | Ø 130 x 95 mm | Ø 129 x 94 mm | Ø 155 x 104 mm |
| Power Consumption | 6.49W | 6.3W | 7.4W | 8.55W | 9.7W | 12.3W | 27W |
| Operating Temp | -30°C~50°C (-22°F~122°F) | -10°C~45°C (14°F~113°F) | -20°C~50°C (-4°F~122°F) | -40°C~50°C (-40°F~122°F) | -10°C~45°C (14°F~113°F) | -40°C~50°C (-40°F~122°F) | |
| Connectivity | 10 Base-T/100 Base-TX Ethernet (RJ-45) | | | | | | |
| WDR | WDR Enhanced | WDR Pro | | | | | |
| Video Analytics | Real time alerting: Intrusion / Line-Crossing / Loitering (People) Deep Search: Scene Search | | | | | | Real time alerting: Intrusion / Line-Crossing / Loitering Deep Search: Attribute Search for People / Vehicles, Scene Search, Re-Search |
| Compliance | FCC/CE/UL/NDA | | | | | | |

*FD639 2-axis design



Cloud Licenses

A VORTEX cloud license is required to activate each camera and enable VORTEX services.

| License Type | Cloud-based Feature | Annual Licensing Fee (\$ USD) |
|-------------------------------------|------------------------------------|-------------------------------|
| Standard (one license / camera) | Unlimited Archive | \$ 149 / year |
| Professional (one license / camera) | Unlimited Archive 30-day Backup | \$199 / year |