

4MP TiOC Network Bullet Camera (Vari-focal)

Active Alarm and Dual Illuminators with Analytics+



Wiz Sense

WizSense Series devices combine Dahua's powerful Analytics+ with an intuitive and easy to use interface. WizSense devices offer Smart Motion Detection and Perimeter Protection functions that focus on human and vehicular images and ignore irrelevant images to capture important video while reducing false alarms. WizSense Series devices provide powerful general security for small to medium size businesses at a sensible price.

System Overview

The Dahua Three-in-One Camera (TiOC) offers multiple features working in tandem to assist with deterrence and low-light detection while delivering high-resolution video images. The camera also features Perimeter Protection and Smart Motion Detection that offer accurate analytics. The camera is ideal for a host of diverse applications — Enhanced Starlight Technology, True Wide Dynamic Range, and Smart Dual Illuminators allow the camera to operate in any lighting condition and the IP67 rating makes the camera suitable for the harshest environments.

Functions

Active Alarm

The camera features active alarm functionality to respond automatically to a triggered alarm. The configurable automatic responses include activation of red and blue lights and the broadcast of a built-in message or siren to stop an incident before it happens.

Smart Dual Illuminators

The camera offers both IR and white-light illuminators and intelligently employs each depending on the situation. Typically, the camera enters the IR mode as ambient light decreases. When the camera detects a person entering the monitoring area, it activates the white-light illuminator to capture full-color details. Once the person leaves the area, the camera switches back to IR illumination.

Enhanced Starlight Technology

For challenging low-light applications, Dahua's Starlight Ultra-low light Technology offers best-in-class light sensitivity, capturing details in low light applications. The camera uses a set of optical features to balance light throughout the scene, resulting in clear images in dark environments.

- 1/2.7-in. 4MP Progressive-scan CMOS Sensor
- Triple-stream Encoding
- AI Coding, Smart H.265+, and Smart H.264+ Video Compression
- 4MP (2688 x 1520) at 30 fps, 2.7 mm to 13.5 mm Vari-focal Lens
- Analytics+ Functions — Perimeter Protection, Smart Motion Detection+
- Dual Built-in Microphones and a Built-in Speaker
- Voice Catcher Technology Captures Clear Audio at a Distance
- Smart Dual Illumination — IR and White Light
- Active Alarm with Red/Blue Lights and Siren or Voice Prompt
- Enhanced Starlight Technology for Low-light Applications
- IP67 Ingress Protection
- Five-year Warranty*

Smart Motion Detection+

Smart Motion Detection+, a component of Dahua's Analytics+ technology, improves alarm accuracy and decreases the number of false alarms. The advanced SMD algorithm analyzes a scene for human or vehicle motion, while filtering out other motion due to trees, leaves, animals, weather, and triggers an alarm when detected. SMD also saves time when searching recorded video by filtering false alarms and allowing quick retrieval of an alarm due to a person or vehicle.

Perimeter Protection

Dahua Analytics+ includes Tripwire and Intrusion functions that offer custom tripwires based on object type for automation in limited access areas. Perimeter Protection requires less pixels to detect an object to deliver improved accuracy and decreased false alarms due to lights, weather, trees, or animals.

Cybersecurity

Dahua network cameras are equipped with a series of key cybersecurity technologies including: security authentication and authorization, access control, trusted protection, encrypted transmission, and encrypted storage. These technologies improve the camera's ability to prevent malicious access and to protect data.

Environmental

Subjected to rigorous dust and water immersion tests the camera suitable for the most demanding outdoor applications. The camera carries an IP67 rating that ensures protection from total dust ingress and protection from water immersion between 15 centimeters and 1 meter in depth.

Technical Specification

Camera

| | |
|--------------------------|---|
| Image Sensor | 1/2.7-in. 4MP CMOS |
| Effective Pixels | 2688 (H) x 1520 (V) |
| RAM/ROM | 512 MB / 128 MB |
| Scanning System | Progressive |
| Electronic Shutter Speed | Auto, Manual, 1/3 s to 1/100,000 s |
| Minimum Illumination | Color: 0.003 lux at F1.0 (30 IRE) B/W: 0.0003 lux at F1.0 (30 IRE) 0 lux at F1.0 (With Illuminators On) |
| S/N Ratio | > 56 dB |
| Illumination Distance | IR: 50.0 m (164.04 ft) White Light: 40.0 m (131.23 ft) |
| IR On/Off Control | Auto, Manual |
| Illuminators | IR: Two (2) LEDs White Light: Two (2) LEDs |

Lens

| | | | | | |
|----------------------------|--|------------------------|-----------------------|-----------------------|----------------------|
| Lens Type | Motorized Vari-focal | | | | |
| Mount Type | φ16 | | | | |
| Focal Length | 2.7 mm to 13.5 mm | | | | |
| Max. Aperture | F1.0 | | | | |
| Angle of View | Horizontal: 103° to 33° Vertical: 54° to 18° Diagonal: 124° to 38° | | | | |
| Iris Type | Fixed | | | | |
| Close Focus Distance | 1.50 m (4.92 ft) | | | | |
| DORI Distance ¹ | Lens | Detect | Observe | Recognize | Identify |
| | W | 65.2 m (213.91 ft) | 26.1 m (85.63 ft) | 13.0 m (42.65 ft) | 6.5 m (21.33 ft) |
| | T | 186.6 m (612.20 ft) | 74.6 m (244.75 ft) | 37.3 m (122.38 ft) | 18.7 m (61.35 ft) |

Installation Angle

| | |
|-------|--|
| Range | Pan: 0° to 360° Tilt: 0° to 90° Rotation: 0° to 360° |
|-------|--|

Video

| | |
|----------------------|--|
| Compression | AI Coding, Smart H.265+, H.265, Smart H.264+, H.264, H.264B, H.264H, MJPEG (sub stream only) |
| Streaming Capability | Three (3) Streams |
| Resolution | 4MP (2688 x 1520), 2560 x 1440, 3MP (2048 x 1536) 3MP (2304 x 1296), 1080p (1920 x 1080), 1.3MP (1280 x 960), 720p (1280 x 720), D1 (704 x 480), VGA (640x 480), CIF (352 x 240) |
| Frame Rate | Main Stream: 4MP (2688 x 1520) at 30 fps |
| | Sub Stream 1: 704 x 480 at 30 fps |
| | Sub Stream 2: 1920 x 1080 at 30 fps |
| Bit Rate Control | CBR/VBR |
| Bit Rate | H.264: 3 kbps to 8192 kbps H.265: 3 kbps to 8192 kbps |
| Day/Night | Auto (ICR), Color, B/W |
| BLC Mode | BLC, HLC, True WDR (120 dB), SSA |

| | |
|-------------------|--|
| White Balance | Auto, Natural, Street Lamp, Outdoor, Manual, Custom Area |
| Gain Control | Auto, Gain Priority, Shutter Priority, Manual |
| Noise Reduction | 3D NR |
| Motion Detection | Off, On (4 Zones, Rectangular) |
| Advanced Features | Electronic Image Stabilization (EIS), Smart IR, Defog |
| Flip | 0°, 90°, 180°, 270° |
| Mirror | Off, On |
| Privacy Masking | Off, On (4 Areas) |

Audio

| | |
|-------------|------------------------------------|
| Input | Two (2) Built-in Microphones |
| Output | One (1) Built-in Speaker |
| Compression | PCM, G.711A, G.711Mu, G.726, G.723 |

Network

| | |
|-------------------------|--|
| Ethernet | RJ-45 (10/100 Base-T) |
| Protocol | IPv4, IPv6, HTTP, TCP, UDP, ARP, RTP, RTSP, RTCP, RTMP, SMTP, FTP, SFTP, DHCP, DNS, DDNS, QoS, UPnP, NTP, Multicast, ICMP, IGMP, NFS, SAMBA, PPPoE, SNMP |
| Interoperability | SDK; API; ONVIF Profile S, G, T; CGI, P2P |
| Streaming Method | Unicast / Multicast |
| Maximum User Access | 20 Users (Total Bandwidth: 72 Mbps) |
| Edge Storage | Network Attached Storage (NAS) Micro SD Slot (maximum 256 GB) |
| Web Viewer | IE (Versions 8, 9, and 11) Chrome, Firefox |
| Management Software | DSS, DMSS |
| Mobile Operating System | iOS, Android |
| Cybersecurity | Video Encryption, Firmware Encryption, Configuration Encryption, Digest, WSSE, Account Lockout, Security Logs, IP/MAC Filtering, Generating and Importing X.509 Certification, Syslog, HTTPS, 802.1x, Trusted Boot, Trusted Execution, Trusted Upgrade |

Certifications

| | |
|-------------------------------------|--|
| Safety | UL62368-1 CAN/CSA C22.2 No. 62368-1-14 EN62368-1 |
| Electromagnetic Compatibility (EMC) | CFR 47 FCC Part 15 Subpart B Electromagnetic Compatibility Directive 2014/30/EU |

Interface

| | | |
|-------|--------|--|
| Audio | Input | One (1) Channel (RCA), plus two (2) built-in microphones |
| | Output | One (1) Channel (RCA) plus one (1) built-in speaker |
| Alarm | Input | One (1) Channel (5 mA, 3 VDC to 5 VDC) |
| | Output | One (1) Channel (300 mA, 12 VDC) |

Electrical

| | | |
|-------------------|-------------------------|-----------------------------|
| Power Supply | 12 VDC or PoE (802.3af) | |
| Power Consumption | Basic | 12 VDC: 3.3 W PoE: 4.4 W |
| | Maximum | 12 VDC: 7.4 W PoE: 8.7 W |

1. The DORI distance is a measure of the general proximity for a specific classification to help pinpoint the right camera for your needs. The DORI distance is calculated based on sensor specifications and lab test results according to EN 62676-4, the standard that defines the criteria for the Detect, Observe, Recognize and Identify classifications.

Environmental

| | |
|----------------------|---|
| Operating Conditions | -30 °C to 60 °C (-22 °F to 140 °F) Less than 95% RH |
| Storage Conditions | -40 °C to 60 °C (-40 °F to 140 °F), Less than 95% RH |
| Ingress Protection | IP67 |

Construction

| | |
|------------------------|--|
| Casing | Metal and Plastic |
| Dimensions (L x W x H) | 288.40 mm x 94.40 mm x 84.70 mm (11.35 in. x 3.72 in. x 3.33 in.) |
| Net Weight | 1.05 kg (2.31 lb) |
| Gross Weight | 1.35 kg (2.98 lb) |

Analytics+ Functions

| | | |
|--|---|-------------------------|
| Perimeter Protection with Active Alarm | <ul style="list-style-type: none"> Detects human or vehicle violations using the following methods: <ul style="list-style-type: none"> Tripwire: a target crosses a defined line. Intrusion: a target enters or exits a defined perimeter. Monitors a combination of detection methods. Search and retrieve video based on target type. Configurable automatic response when an alarm is triggered: <ul style="list-style-type: none"> Red/Blue Light illuminator activation. Siren activation. Includes 11 built-in siren sounds plus ability to record custom recordings. | |
| | <ul style="list-style-type: none"> Differentiates between and classifies human and vehicle objects. Filters false alarms due to leaves, lights, animals, and other inconsequential objects. Extracts human or vehicle objects from recorded video for quick target search and retrieval. | |
| Recommended Detection Distance | Human | Up to 10.0 m (32.81 ft) |
| | Vehicle | Up to 15.0 m (49.21 ft) |

Intelligent Video System Functions

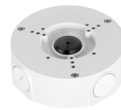
IVS triggers an alarm and takes a defined action for the following events:

| | |
|-------------------|--|
| Standard Features | <ul style="list-style-type: none"> Tampering with the camera. Error writing to an onboard Micro SD card. Error sending or receiving data over the network. Unauthorized access to the camera. IP Address Conflict |
| Premium Features | |
| Tripwire | A target crosses a user-defined line. |
| Intrusion | A target enters or exists a defined perimeter. |

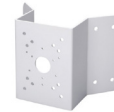
Ordering Information

| Type | Part Number | Description |
|------------------------|---------------|---|
| TiOC Camera | N43BX8Z | 4MP Vari-focal lens Bullet Camera with Analytics+, Active Alarm, Smart Illumination |
| Accessories (Optional) | PFA130-E | Junction Box |
| | PFA151 | Corner Mount |
| | PFA152-E | Pole Mount |
| | DH-PFM321D-US | 12 VDC, 1 A Power Adapter |

Accessories (Optional)



PFA130-E
Junction Box



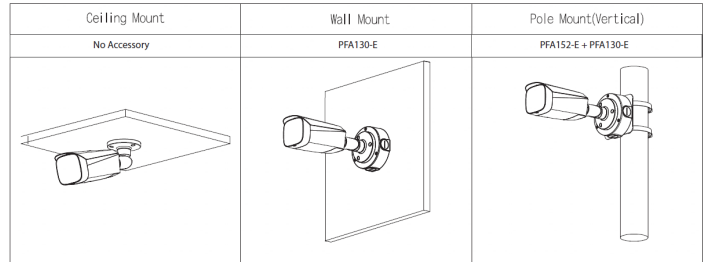
PFA151
Corner Mount



PFA152-E
Pole Mount



DH-PFM321D-US
Power Adapter



Dimensions

mm [inch]

