

# TOTO®

# CWT4263056CMFGA

## AP WASHLET®+ S550e Wall-Hung Toilet, 1.28GPF & 0.9GPF

### FEATURES

#### AP Bowl

- DYNAMAX TORNADO FLUSH® system, high efficiency (1.28GPF/0.9GPF)
- CEFIONTECT® ceramic glaze - prevents debris, mold from sticking to ceramic surfaces
- Universal Height
- Elongated shape front bowl

#### S550e WASHLET

- Contemporary elongated WASHLET

#### DuoFit In-Wall Tank

- Dual flushing system, high-efficiency (1.28 GPF/4.8 LPF & 0.9 GPF/3.4 LPF) Avg. flush 1.03 GPF
- Adjustable 15"-19" mounting height
- Saves up to 9" of floor space compared to standard floor-mounted toilet
- Supports up to 880lbs
- Commercial 2" x 6" or optional residential installation with 2" x 4" wall studs with waste outlet kit
- Copper supply line

#### Push Plate

- YT930#MS  
Matte Silver Basic Round Push Plate

### KIT COMPONENTS

- CT426CFGT40#01  
AP Wall-Hung Toilet
- WT173MA
- In-Wall Tank System (Copper Pipe)
- SW3056AT40#01  
S550e WASHLET  
Elongated WASHLET
- THU794  
WASHLET connection kit
- YT930#MS  
Matte Silver Basic Round Push Plate

#### Available Options

- YT920#WH - White Matte Basic Square Push Plate
- YT920#MS - Matte Silver Basic Square Push Plate
- YT930#WH - White Matte Basic Round Push Plate
- YT970#SS - Stainless Steel Wall Square Push Plate
- YT980#SS - Stainless Steel Wall Round Push Plate



 **DYNAMAX  
TORNADO FLUSH**

 **CEFIONTECT**

 **AUTO FLUSH**

 **Skirted Design**

 **EWATER+**

### COLORS/FINISHES

- Standard  
#01 Cotton

### CODES/STANDARDS

- Meets or exceeds:
  - Bowl: ASME A112.19.2/CSA B45.1, ASME A112.19.14
  - Carrier System: ASME A112.6.2
  - Tank Trim: IAPMO PS50, CSA B125.3, ASSE1002
- Certifications: IAPMO (cUPC), EPA WaterSense State of Massachusetts, City of Los Angeles and others
- Legislative compliance: California AB715, California Green Building Code, City of Los Angeles Water Efficiency Ordinance
- Code Compliance: UPC, IPC, NSPC, NPC Canada, and others
- Complies with CA Prop 65 warning requirements



# CWT4263056CMFGA

## AP WASHLET®+ S550e Wall-Hung Toilet, 1.28GPF & 0.9GPF

### PRODUCT SPECIFICATIONS

|                     | CT426CFGT40                            | S550e                            | WT173MA                                |
|---------------------|--|----------------------------------|--|
| Water Use           | 1.28 GPF & 0.9 GPF (4.8 LPF & 3.4 LPF) |                                  | 1.28 GPF & 0.9 GPF (4.8 LPF & 3.4 LPF) |
| Flush System        | DYNAMAX TORNADO FLUSH®                 |                                  | Dual flushing                          |
| Min. Water Pressure | 8 psi (static)                         |                                  | 8 psi (static)                         |
| Max. Water Pressure | 108.75 psi (static)                    |                                  | 108.75 psi (static)                    |
| Water Surface       | 5-1/2" X 4-1/8"                        |                                  |  |
| Trap Diameter       | 2-1/8"                                 |                                  |  |
| Installation Height | 15" to 19"                             |                                  | 15" to 19"                             |
| Trap Seal           | 2-1/8"                                 |                                  |  |
| Warranty            | One Year Limited Warranty              | One Year Limited Warranty        | One Year Limited Warranty              |
| Material            | Vitreous China                         |                                  | Various                                |
| Shipping Weight     | 68 lbs                                 | 9 lbs                            | 38 lbs                                 |
| Shipping Dimensions | 22" L x 14.6" W x 16.5 H               | 20-5/8" L x 19-1/8" W x 3-1/4" H | 48" L x 26-1/2" W x 6" H               |

#### CT426CFGT40

This universal height, high efficiency DYNAMAX TORNADO flushing system toilet shall be 1.28GPF & 0.9GPF. Toilet shall have CEFIONTECT® ceramic glaze. Toilet shall be mounted to in-wall tank system, elongated front bowl and wall-mounted push-button type trip lever. Toilet shall be TOTO Model CT426CFGT40#01.

#### S550e

Contemporary elongated WASHLET

#### YT930#MS

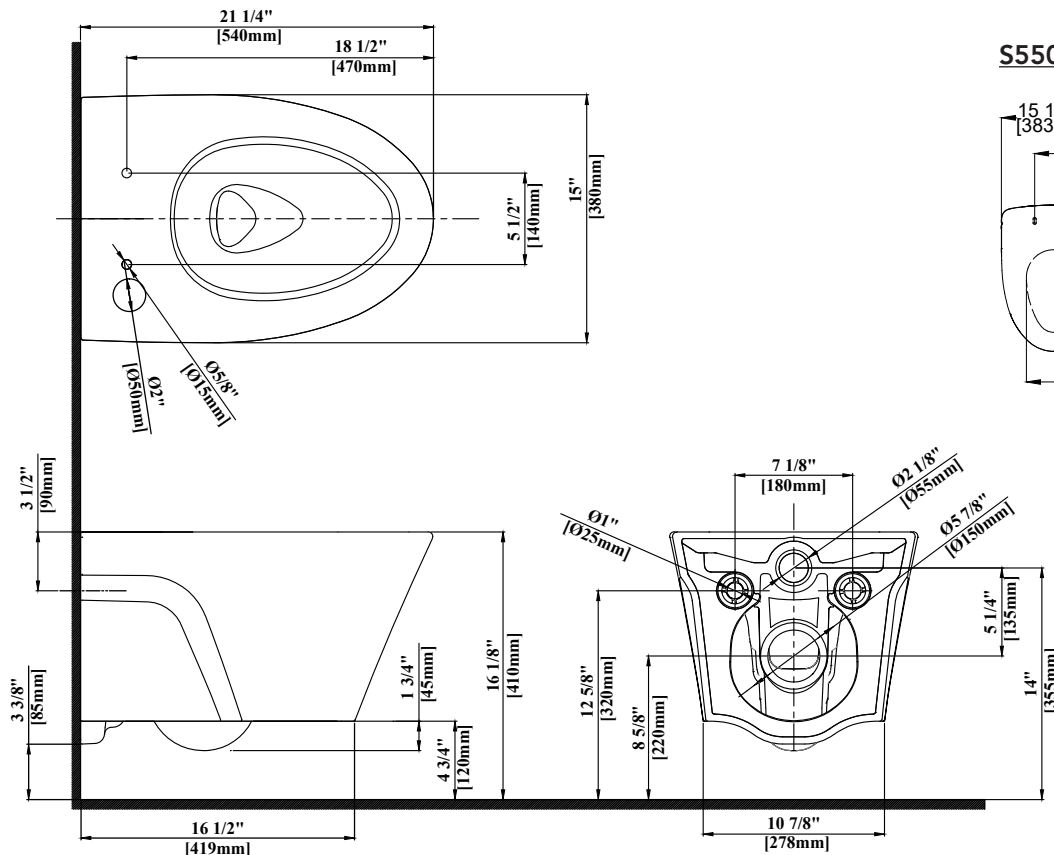
Dual Button Push Plate  
#MS Matte Silver

#### WT173MA

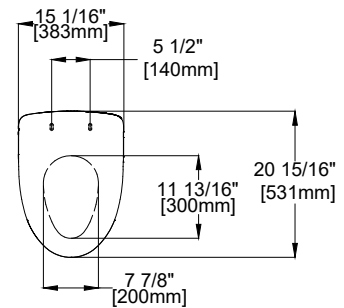
This universal height, high-efficiency, dual flushing, in-wall tank system toilet shall be 1.28GPF & 0.9GPF. Requires TOTO toilet model CT426CFGT40. In-Wall tank system shall be TOTO Model WT173MA.

### PRODUCT DIMENSIONS

#### CT426CFGT40



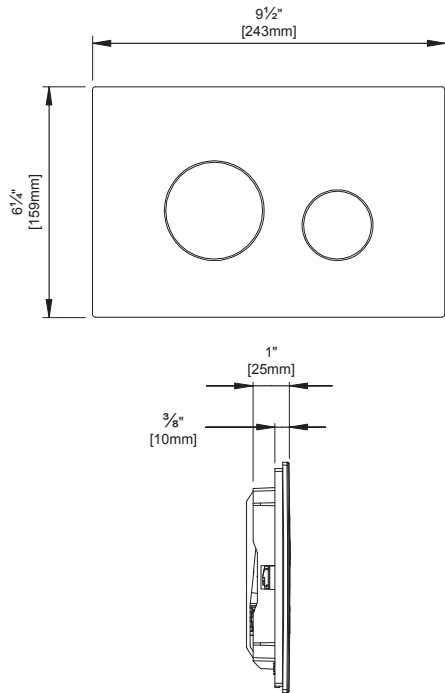
#### S550e



# CWT4263056CMFGA

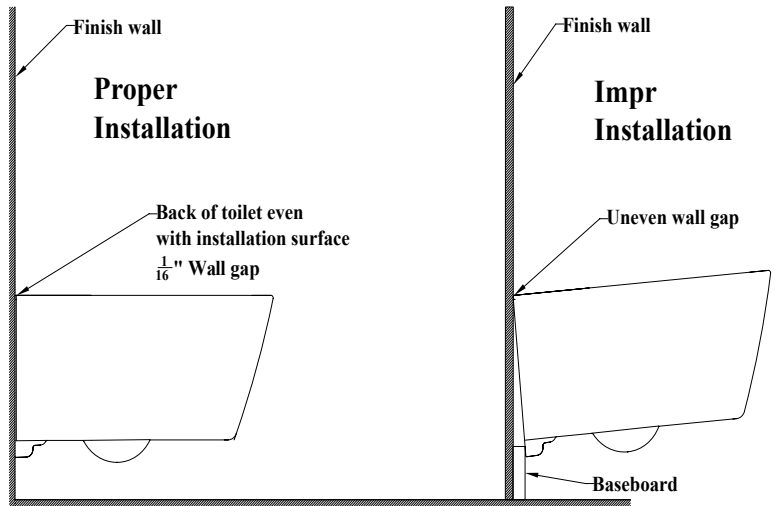
## AP WASHLET®+ S550e Wall-Hung Toilet, 1.28GPF & 0.9GPF

### YT930



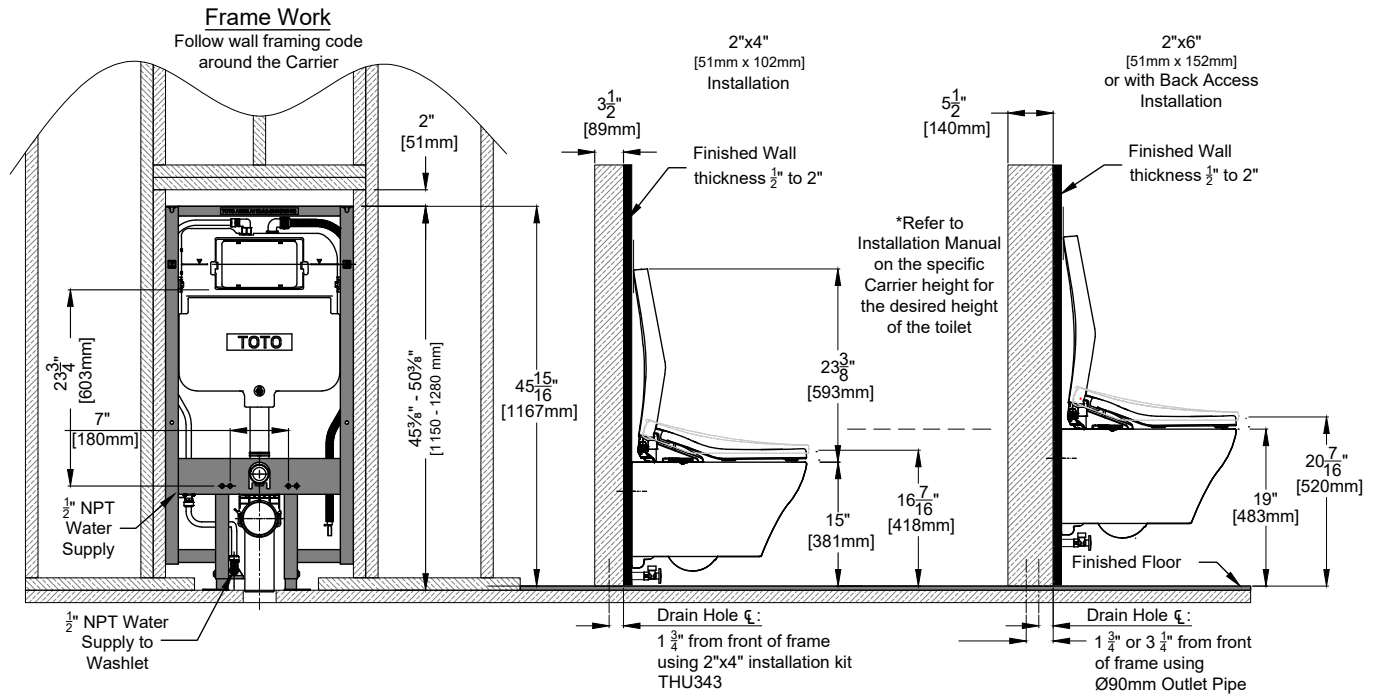
### INSTALLATION NOTES

- Adequate structural bracing is required
- Framing support should be capable of supporting 880 lbs load without damage to the wall. See installation manual for more details.



### DIMENSIONS

#### WT173MA



**TOTO**®

These dimensions and specifications are subject to change without notice